

## Select/Prepare Gels

### Precast Gels

Code	Description
LZ54801 -	Lonza Reliant Pre-Cast Minigel 1% SK Gold+ Agarose TAE (6x9.5cm 8 Well) - 20 Pk
LZ54820 -	Lonza Reliant Pre-Cast Minigel 1% SK Gold+ Agarose TBE EB (6x9.5cm 12 Well) - 20 Pk
LZ54825 -	Lonza Reliant Pre-Cast Minigel 2% SK Gold+ Agarose TBE EB (6x9.5cm 12 Well) - 20 Pk
LZ54813 -	Lonza Reliant Pre-Cast Minigel 2% SK Gold+ Agarose TBE EB (6x9.5cm 24 Well) - 20 Pk
LZ54925 -	Lonza Reliant Pre-Cast Minigel 4% NS 3:1+ Agarose TAE EB (6x9.5cm 8 Well) - 20 Pk
LZ54928 -	Lonza Reliant Pre-Cast Minigel 4% NS 3:1+ Agarose TBE EB (6x9.5cm 20 Well) - 20 Pk



LZ54801

### Agarose

Code	Description
LZ50000 -	Lonza SeaKem LE Agarose - 125g
LZ50100 -	Lonza SeaPlaque Agarose - 125g
LZ50020 -	Lonza SeaKem HE Agarose - 125g
LZ50010 -	Lonza SeaKem ME Agarose - 125g



LZ50010

### Acrylamide

Code	Description
LZ50618 -	Lonza ProSieve 50 Acrylamide Gel Solution - 250mL
LZ50617 -	Lonza ProSieve 50 Acrylamide Gel Solution - 125mL

## Extract/Prepare Sample

### DNA Extraction

Code	Description
-	Meridian Bioscience ISOLATE II Genomic DNA Kit - 50 Preps
-	Meridian Bioscience ISOLATE II Genomic DNA Kit - 250 Preps
BI052072 -	Meridian Bioscience ISOLATE II RNA Mini Kit - 50 Preps
BI052073 -	Meridian Bioscience ISOLATE II RNA Mini Kit - 250 Preps

### PCR

Code	Description
MOL2704 -	Blue-Ray Biotech Gradient TurboCycler Lite with 96-well Sample Block
E6333000049 -	Eppendorf Mastercycler Nexus PCR Thermal Cycler



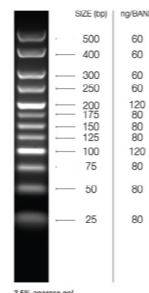
E6333000049



MOL2704

### Ladders

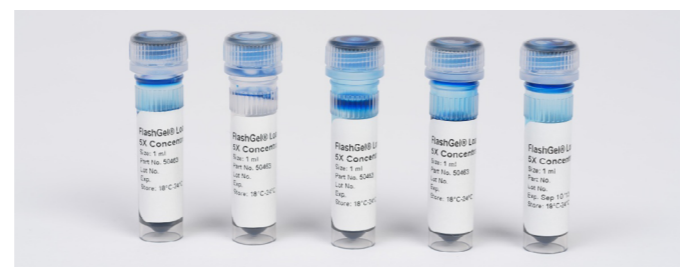
Code	Description
BI033031 -	Meridian Bioscience Hyper-Ladder 25bp - 200 Lanes
BI033029 -	Meridian Bioscience Hyper-Ladder 100bp - 200 Lanes
BI033025 -	Meridian Bioscience Hyper-Ladder 1kb - 200 Lanes



BI033031

### Loading Buffer

Code	Description
LZ50655 -	Lonza DNA Loading Buffer 6X Concentration - 5x1mL
NAT1192 -	Triple Dye Loading Buffer 6X Concentration for DNA/RNA Electrophoresis - 1.2mL

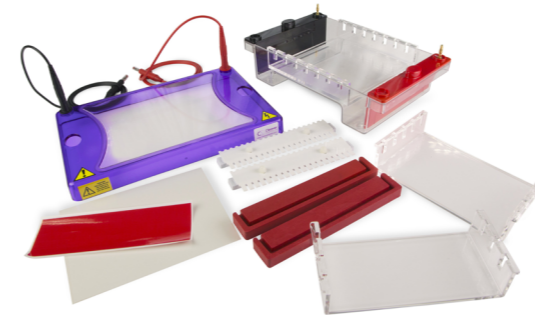


LZ50655

## Run Gel

### Gel Tanks

Code	Description
MSCHOICE7 -	SLS Flowgen MultiSUB Choice 15x7cm UV Tray Combs and Dams
MSCHOICE10 -	SLS Flowgen MultiSUB Choice 15x10cm UV Tray Combs and Dams
MSCHOICE15 -	SLS Flowgen MultiSUB Choice 15x15cm UV Tray Combs and Dams
MSCHOICETRIO -	SLS Flowgen MultiSUB Choice 15x7 15x10 and 15x15cm UV Tray Combs and Dams



MSCHOICETRIO

### Power Supplies

Code	Description
NANOPAC-300 -	SLS Flowgen NanoPAC 300 MINI Electrophoresis Power Supply - 400mA, 300V, 60W
ELE2600 -	SLS Flowgen PowerPro 300 Electrophoresis Power Supply - 700mA, 300V, 150W
ELE2602 -	SLS Flowgen PowerPro 500 Electrophoresis Power Supply - 800mA, 500V, 300W



NANOPAC-300



ELE2600

### Buffers

Code	Description
NAT1196 -	TBE Buffer 10X Concentration for DNA/RNA Electrophoresis - 1L
NAT1222 -	TAE Buffer 50X Concentration for Agarose DNA Electrophoresis - 1L



NAT1196



NAT1222

## DNA - Image & Analyse Results

### Stains

Code	Description
LZ50512 -	Lonza SYBR Green I Nucleic Acid Stain 10000X Concentrate in DMSO - 2x50uL
LZ50522 -	Lonza SYBR Green II Nucleic Acid Stain 10000X Concentrate in DMSO - 2x50uL



LZ50512

### Transilluminators

Code	Description
ULT4500 -	UV Transilluminator 21 x 21cm 254nm
ULT4502 -	UV Transilluminator 21 x 21cm 312nm
ULT4504 -	UV Transilluminator 21 x 21cm 365nm



ULT4500

### Gel Imagers

Code	Description
ELE0028 -	Syngene NuGenius Gel Documentation System with Epi LED White Lights Filter Drawer and UV Filter
ELE7601 -	Syngene G:BOX CHEMI XRQ Multi Fluorescence and Chemiluminescence Imaging System



ELE0028



ELE7601

For more information on these products please contact Gemma Reid Ph.D.:  
[gemma@analab.ie](mailto:gemma@analab.ie)  
Tel: +353 (0)86 1409355

Analab Office: 028 9262 1100

[sales@analab.co.uk](mailto:sales@analab.co.uk) or [sales@analab.ie](mailto:sales@analab.ie)

[www.analab.co.uk](http://www.analab.co.uk) or [www.analab.ie](http://www.analab.ie)