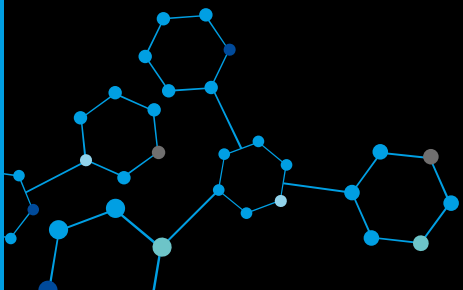




Analab **Biotech** Solutions



## About us...



Brought to you by



Ireland's truly independent total laboratory supplier, Analab, part of SLS UK, is committed to delivering a broad range of products, from leading scientific manufacturers; offering quality, choice, reliability and value-for-money. Analab offers a Total Supply Solution, across all scientific sectors, from reagents and chemicals to consumables and general laboratory equipment.

We provide precisely what you need, exactly when you need it, whether you're searching for something specific or aiming to equip an entire laboratory. Whatever you are looking for, you can be sure our team will take care of you and provide a dedicated service that's designed entirely around you and your business.

From pipettes and petri dishes to the latest in laboratory instrumentation, we pride ourselves on the quality of products and the service we provide. However specific your needs, you can be sure we'll deliver precisely the quality you need.

# CONTENTS

## Jump to...

### Evolution of SLS



### Safety



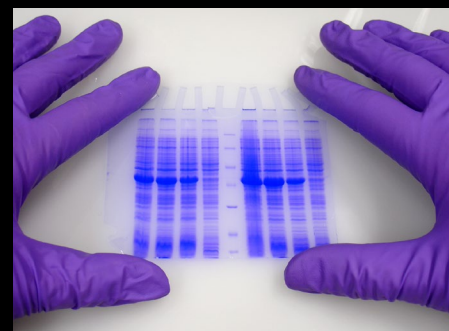
### 3D Cell Culture



### Sample Prep



### Electrophoresis



### qPCR



### ELISA



### Chromatography

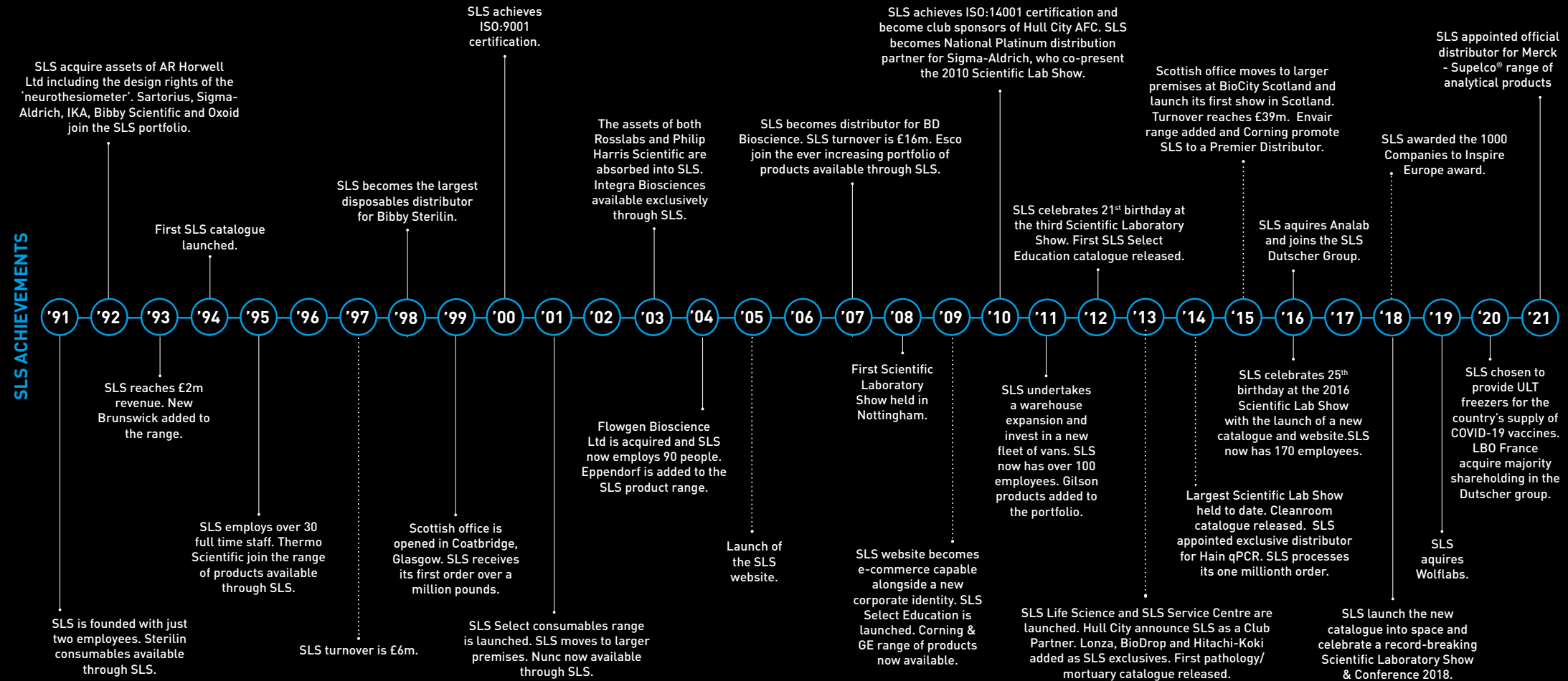


Plus, spotlight on sustainability



# THE EVOLUTION OF SLS

A lot has changed in 30 years...



Scientific Laboratory Supplies: Delivering Precisely the Quality You Need



ANALYSE  
WORKFLOWS  
SAFETY  
SAMPLE PREP  
APPLICATION  
PPE  
3D CELL CULTURE  
EXTRACTION

ELISA  
QPCR  
ELECTROPHORESIS  
LIFE SCIENCES  
CHROMATOGRAPHY  
BIOPHARMA  
RNA  
CHEMICALS  
SLS

# Spotlight on: SAFETY

SLS are partnered with some of the most respected brand names in the Safety and PPE industry. We're able to offer top quality products at a competitive price. We offer head to toe safety solutions for all your PPE requirements and can work with you to create a tailored safety solution to keep your employees safe.

Key brand names include:

- 3M
- Bolle
- Kimberly-Clark
- Portwest
- Shield Scientific
- Diversy
- SLS Select
- Ansell
- Uvex
- GlovePlus

## Safety



### Head Protection

- Safety helmets – various colours
- Helmet accessories - ear defenders, sweatbands, lighting, reflective sticker, company logos
- Bump caps – various colours
- Safety baseball caps with/without integral respiratory protection
- Bouffant caps
- Mob caps

SAF9580



### Workwear

- Traditional/corporate workwear - polo shirts, sweatshirts, fleeces, coats, soft shell jackets, shirts, blouses, trousers, skirts - all available in various colours and with company logos
- Disposable workwear - coveralls, overshoes/boots, oversleeves, aprons, hoods, mob/cloth caps, bouffant caps, lab coats, gowns, chemical, high visibility.

SAF0304



### Eyewear

- Safety glasses - all shades, mens and ladies
- Prescription eyewear
- VDU eyewear
- Safety goggles – mens and ladies, autoclavable goggles, single use sterile goggles
- Full face shields, covid face shields

SAF1868



### Hand Protection

- Disposable nitrile, vinyl, latex gloves – sterile and non-sterile
- Heat protective gloves
- Cut resistant gloves
- Chemical reusable gloves
- Cryogenic gloves
- Mechanical handling gloves – including ESD gloves
- Needle stick gloves

SAF5682



### Respiratory

- Respirators – disposable respirators (FFP1, FFP2, FFP3), full face respirators, positive pressure air fed respirators, chemical/smoke escape respirators
- Silicone half masks
- All filters to suit reusable masks
- Face fit test kits
- Medical type IIR masks

SAF8441



### Footwear

- Safety boots and trainers
- Corporate safety shoes
- Ladies range of footwear
- Healthcare non-safety footwear
- Washable footwear
- ESD footwear
- Wellingtons

SAF7382



### Hearing Protection

- Disposable and reusable ear plugs – various SNR's
- Ear defenders – various SNR's, helmet mounted ear defenders
- Noise level meters
- Sound noise monitors
- Radio communication ear defenders

SAF1588



SAF6480



### Other

- First aid equipment
- Spill kits – all sizes chemical/oil
- Industrial and disinfectant wipers
- Hazardous storage cabinets
- Fire safety
- Signage

SAF9600



ROI: +353(0) 1 4069464  
@ sales@analab.ie  
www analab.ie

# Spotlight on: 3D CELL CULTURE

SLS can supply market leading cell culture products from recognised and trusted brands such as Lonza and Corning Life Sciences.

Key product highlights:

- **Corning Matrigel Matrix: the original and trusted Extra-Cellular Matrix (ECM).** This natural ECM-based hydrogel is among the most widely used models for 2D and 3D cell culture *in vitro*.
- **Corning spheroid plate – providing a novel solution to growing up spheroids.** These ultra-low attachment microplates feature a covalently bound hydrogel layer that effectively inhibits cellular attachment and aids the formation of spheroids

## 3D Cell Culture Workflow

### Culture & Harvest Selected Cell Line

#### Media

| Code        | Description                                      |
|-------------|--|
| LZBE12-604F | Lonza DMEM 4.5g/L Glucose with L-Glutamine 500mL |
| LZBE12-169F | Lonza Alpha MEM Eagle without L-Glutamine 500mL  |
| LZBE12-117F | Lonza Medium 199 with EBSS L-Glutamine with 25mM |



#### Plastics

| Code   | Description   |
|--------|---|
| 352340 | Falcon 40µm cell strainer   |
| 4616   | Corning® ultra-low attachment 25cm² cell culture flask with vent cap, rectangular, canted neck                            |
| 3814   | Corning® ultra-low attachment 75cm² U-shaped canted neck cell culture flask with vent cap                                 |
| 430168 | Corning® 25cm² rectangular canted neck cell culture flask with plug seal cap  |
| 3471   | Corning® Costar ultra-low attachment 6-well multiwell plates, clear, flat bottom, sterile, individually wrapped, with lid |



#### Cell Counter

| Code | Description           |
|------|-----------------------|
| 6749 | Corning® cell counter |

Small and easy to use cell counter with state-of-the-art image analysis software for optimal accuracy.



### Transfer to Spheroid Microplates

#### Spheroid Microplates

| Code | Description  |
|------|--|
| 4515 | Corning® spheroid microplate, 96-well, black/clear round bottom, with lid, ULA surface, sterile  |
| 4516 | Corning® spheroid microplate, 384-well, black/clear round bottom, with lid, ULA surface, sterile |
| 3387 | HTS Transwell-96 permeable support with 5.0µm pore polycarbonate membrane, 8 per case, sterile   |
| 3474 | Corning 96-well clear microplate, flat bottom, ULA surface, with lid, individually wrapped       |
| 7007 | Corning 96-well clear microplate, round bottom, ULA surface, with lid, individually wrapped      |



#### Extracellular Matrices

| Code   | Description   |
|--------|---|
| 356230 | Corning Matrigel® Growth Factor Reduced (GFR) basement membrane matrix, 5mL |
| 354248 | Corning Basement Membrane Matrix high concentration (HC), LDEV-free, 10mL   |
| 356255 | Corning Matrigel Matrix for organoid culture phenol-red free 10mL           |
| 354249 | Corning Collagen I, high concentration, rat tail, 100mg                     |
| 354239 | Corning Ultrapure Laminin, mouse, 1mg                                       |
| 354250 | Corning PuraMatrix™ Peptide Hydrogel, 5mL                                   |



#### CoolCell Technology

| Code   | Description  |
|--------|--|
| 432021 | Corning CoolBox XT purple all-day cooling and freezing workstation single capacity     |
| 432003 | Corning CoolCell® LX, orange freezing container, for 12 x 1 mL or 2 mL cryogenic vials |
| 432014 | Corning CoolBox™ XT Starter complete, low profile, open platform ice-free cooler       |



### Monitor Growth

#### Incubators

| Code        | Description  |
|-------------|--|
| E6731000012 | Eppendorf CellXpert C170i CO <sub>2</sub> incubator touch screen non-segmented inner door handle, right side |
| E6731000022 | Eppendorf CellXpert C170i CO <sub>2</sub> incubator touch screen non-segmented inner door handle, left side  |



#### Cell Imager

| Code    | Description   |
|---------|---|
| COU2050 | Blue-Ray Biotech EzScope 101 live cell imaging system with 10x objective lens |



EZScope 101 is designed to be used inside an incubator to allow 24/7 monitoring of cells, eliminating the need to remove flasks from the incubator. Images can be observed anytime with walk-away convenience and up to four samples can be monitored simultaneously in the same incubator.

### Retrieve Spheroids & Perform Further Analysis

#### Reagents

| Code   | Description                           |
|--------|---------------------------------------|
| 354235 | Corning dispase, 100 mL               |
| 354253 | Corning cell recovery solution, 100mL |



#### Plate Readers

| Code    | Description  |
|---------|--|
| MIC9256 | Sunrise absorbance plate reader with 4 filter slide 405nm 450nm 492nm and 620nm filters with temperature control [42C] and magellan software             |
| MIC9258 | Sunrise absorbance plate reader with 6 filter slide 405nm 450nm 492nm 540nm 570nm and 620nm filters with temperature control [42C] and magellan software |



An ideal solution for a range of applications, the Sunrise absorbance reader can measure an entire 96-well plate in less than six seconds.

**Analab**

ROI: +353(0) 1 4069464  
@ sales@analab.ie  
www analab.ie

# Spotlight on: SAMPLE PREP

SLS can supply a wide range of sample preparation products to ensure the most efficient extractions from precious samples.

Key product highlights:

- **Precellys Evolution Homogeniser**  
Over 10 years of sample preparation expertise has resulted in the Evolution homogeniser becoming the ultimate universal tissue homogeniser used in laboratories
- **Cytiva Protein Prep Syringe Filters**  
Optimized for sample prep prior to chromatography with ÄKTA protein purification systems
- **Meridian Bioscience Isolate Kits**  
ISOLATE II Genomic DNA Kit is designed for the rapid and efficient isolation of highly pure genomic DNA from a variety of starting materials such as animal tissue, paraffin embedded tissue, rodent tail, buccal swabs, bacteria, yeast and other eukaryotic cells

## Sample Preparation Workflow

### Sample Lysis – Mechanical

#### Homogenizers

| Code    | Description  |
|---------|--|
| HOM1000 | Precellys Evolution homogeniser with adapter for 2mL/0.5mL tubes                       |
| HOM1004 | Precellys Evolution homogeniser with Cryolys Evolution cooling unit (requires dry lie) |



#### Accessories

| Code    | Description                                      |
|---------|--|
| HOM1016 | 7mL holder pack for Precellys Evolution          |
| HOM1018 | 15mL holder pack for Precellys Evolution         |
| HOM1020 | 96WP tube holder V2 for Precellys Evolution      |
| HOM1022 | 96WP blocking Pplate V2f for Precellys Evolution |



#### Kits

| Code    | Description   |
|---------|---|
| HOM1044 | Precellys 2mL lysing kits, soft tissue homogenizing CK14              |
| HOM1056 | Precellys 2mL lysing kits, tissue homogenizing CKMix                  |
| HOM1064 | Precellys 2mL reinforced lysing kits, hard tissue homogenizing CK28-R |
| HOM1078 | Precellys 7mL lysing kits, tissue homogenizing CK28-7mL               |
| HOM1092 | Precellys 15mL lysing kits, hard tissue homogenizing CK28-15mL        |
| HOM1104 | Precellys prefilled 96 well-plate, soft tissue homogenizing CK14-WP   |

### Sample Lysis – Chemical

#### Equipment

| Code        | Description   |
|-------------|---|
| CEN5050     | SLS Lab Basics 12 mini centrifuge                               |
| E5406000569 | Eppendorf centrifuge 5425R knob control with rotor refrigerated |



#### Plastics

| Code    | Description   |
|---------|---|
| CEN7272 | Microfuge tube, 1.7mL, clear  |
| 430791  | Corning centrifuge tubes, 15mL, polypropylene Conical bottom with Centristar cap, sterile |



#### Reagents

| Code         | Description  |
|--------------|--|
| 21-040-CM    | 1L PBS (Phosphate-Buffered Saline) 1x without calcium & magnesium                        |
| R0278-50ML   | RIPA buffer  |
| P8340-1ML    | Protease inhibitor cocktail for use with mammalian cell & tissue extracts, DMSO solution |
| P2714-1BTL   | Protease inhibitor cocktail for general use, lyophilized powder                          |
| GE80-6501-23 | Cytiva protease inhibitor mix, for 2D studies  |



### Protein Purification

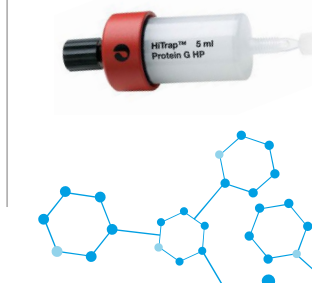
#### Filtration

| Code     | Description  |
|----------|--|
| 10463103 | Cytiva protein prep syringe filter for AKTA systems, 13mm diameter 0.2µm regenerated cellulose membrane  |
| 10463113 | Cytiva protein prep syringe filter for AKTA systems, 13mm diameter 0.45µm regenerated cellulose membrane |
| 10463043 | Cytiva protein prep syringe filter for AKTA Systems, 30mm diameter 0.2µm regenerated cellulose membrane  |
| 10463033 | Cytiva protein prep syringe filter for AKTA systems, 30mm diameter 0.45µm regenerated cellulose membrane |
| FIL2522  | Whatman SPARTAN 13mm HPLC-certified syringe filter, regenerated cellulose, 0.2µm, with mini-tip outlet   |
| FIL2526  | Whatman SPARTAN 13mm HPLC-certified syringe filter, regenerated cellulose, 0.45µm, with mini-tip outlet  |



#### Purification

| Code     | Description                   |
|----------|-------------------------------|
| 17040501 | HiTrap Protein G HP, 1 x 5mL  |
| 17115401 | HiTrap Q HP, 5 x 5mL          |
| 17115201 | HiTrap SP HP, 5 x 5mL         |
| 17115301 | HiTrap Q HP, 5 x 1mL          |
| 17072901 | SP Sepharose Fast Flow, 300mL |
| 17070901 | CM Sepharose Fast Flow, 500mL |



### DNA Purification

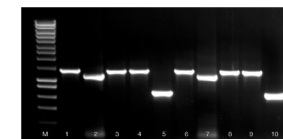
#### Equipment

| Code    | Description   |
|---------|---|
| SLS1176 | SLS Lab Pro unstirred water bath, 4L with clear polycarbonate lid |
| SLS1172 | SLS Lab Pro stirred water bath, 14L                               |



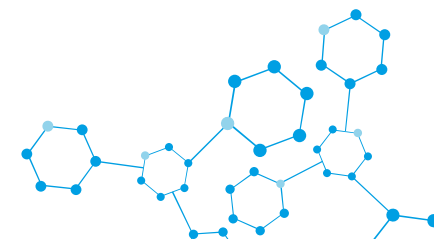
#### DNA Isolation Kits

| Code     | Description  |
|----------|--|
| BI052066 | Meridian Bioscience ISOLATE II genomic DNA kit, 50 preps |
| BI052059 | Meridian Bioscience ISOLATE II PCR & gel kit, 50 preps   |
| BI052069 | Meridian Bioscience ISOLATE II plant DNA kit, 50 preps   |



#### Reagents

| Code     | Description  |
|----------|--|
| BI037084 | Meridian Bioscience proteinase K solution, 5mL 20mg/mL     |
| BI037085 | Meridian Bioscience proteinase K solution, 5 x 5mL 20mg/mL |



# Spotlight on: ELECTROPHORESIS

SLS have an extensive range of electrophoresis products from trusted suppliers such as Lonza and Syngene.

Key product highlights:

- **Lonza Agarose**  
SeaKem® LE Agarose is ideal for routine analysis of nucleic acids by gel electrophoresis and blotting
- **Syngene Gel Imagers**  
NuGenius is a new generation, low cost, integrated imaging system for DNA and protein analysis and gel documentation

## Electrophoresis Workflow

### Select/Prepare Gels

#### Precast Gels

Lonza Reliant Pre-Cast Minigel. Supplied in packs of 20.

| Code    | Description                                     |
|---------|---|
| LZ54801 | 1% SK Gold+ agarose TAE (6 x 9.5cm, 8 well)     |
| LZ54820 | 1% SK Gold+ agarose TBE EB (6 x 9.5cm, 12 well) |
| LZ54825 | 2% SK Gold+ agarose TBE EB (6 x 9.5cm, 12 well) |
| LZ54813 | 2% SK Gold+ agarose TBE EB (6 x 9.5cm, 24 well) |
| LZ54925 | 4% NS 3:1+ agarose TAE EB (6 x 9.5cm, 8 well)   |
| LZ54928 | 4% NS 3:1+ agarose TBE EB (6 x 9.5cm, 20 well)  |



LZ54801

#### Agarose

| Code    | Description                   |
|---------|-------------------------------|
| LZ50000 | Lonza SeaKem LE agarose, 125g |
| LZ50100 | Lonza SeaPlaque agarose, 125g |
| LZ50020 | Lonza SeaKem HE agarose, 125g |
| LZ50010 | Lonza SeaKem ME agarose, 125g |



LZ50010

#### Acrylamide

| Code    | Description                                      |
|---------|--|
| LZ50618 | Lonza ProSieve 50 acrylamide gel solution, 250mL |
| LZ50617 | Lonza ProSieve 50 acrylamide gel solution, 125mL |

### Extract/Prepare Sample

#### DNA Extraction

Meridian Bioscience ISOLATE II Kits.

| Code     | Description                |
|----------|----------------------------|
| BIO52066 | Genomic DNA Kit, 50 preps  |
| BIO52067 | Genomic DNA Kit, 250 preps |
| BIO52072 | RNA Mini Kit, 50 preps     |
| BIO52073 | RNA Mini Kit, 250 preps    |

#### PCR

| Code        | Description  |
|-------------|--|
| MOL2704     | Blue-Ray Biotech Gradient TurboCycler Lite with 96-well sample block |
| E6333000049 | Eppendorf Mastercycler Nexus PCR thermal cycler                      |



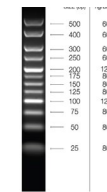
MOL2704



E6333000049

#### Ladders

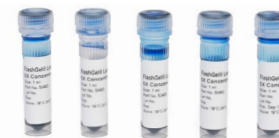
| Code     | Description                                       |
|----------|---|
| BIO33031 | Meridian Bioscience Hyper-Ladder 25bp, 200 Lanes  |
| BIO33029 | Meridian Bioscience Hyper-Ladder 100bp, 200 Lanes |
| BIO33025 | Meridian Bioscience Hyper-Ladder 1kb, 200 Lanes   |



BIO33031

#### Loading Buffer

| Code    | Description   |
|---------|---|
| LZ50655 | Lonza DNA loading buffer 6X concentration, 5 x 1mL                            |
| NAT1192 | Triple dye loading buffer 6X concentration for DNA/RNA electrophoresis, 1.2mL |



LZ50655

### Run Gel

#### Gel Tanks

SLS Flowgen MultiSUB Choice

| Code         | Description                                  |
|--------------|--|
| MSCHOICE7    | 15x7cm UV tray combs and dams                |
| MSCHOICE10   | 15x10cm UV tray combs and dams               |
| MSCHOICE15   | 15x15cm UV tray combs and dams               |
| MSCHOICETRIO | 15x7, 15x10 & 15x15cm UV tray combs and dams |



MSCHOICETRIO

#### Power Supplies

| Code        | Description   |
|-------------|---|
| NANOPAC-300 | SLS Flowgen NanoPAC 300 MINI electrophoresis power supply, 400mA, 300V, 60W |
| ELE2600     | SLS Flowgen PowerPro 300 electrophoresis power supply, 700mA, 300V, 150W    |
| ELE2602     | SLS Flowgen PowerPro 500 electrophoresis power supply, 800mA, 500V, 300W    |



NANOPAC-300



ELE2600

#### Buffers

| Code    | Description  |
|---------|--|
| NAT1196 | TBE buffer 10X concentration for DNA/RNA electrophoresis, 1L     |
| NAT1222 | TAE buffer 50X concentration for agarose DNA electrophoresis, 1L |



NAT1222



NAT1196

### DNA - Image & Analyse Results

#### Stains

| Code    | Description   |
|---------|---|
| LZ50512 | Lonza SYBR green I nucleic acid stain 10000X Concentrate in DMSO, 2 x 50µL  |
| LZ50522 | Lonza ScBR green II nucleic acid stain 10000X concentrate in DMSO, 2 x 50µL |



#### Transilluminators

| Code    | Description                          |
|---------|--------------------------------------|
| ULT4500 | UV transilluminator 21 x 21cm, 254nm |
| ULT4502 | UV transilluminator 21 x 21cm, 312nm |
| ULT4504 | UV transilluminator 21 x 21cm, 365nm |



ULT4500

#### Gel Imagers

| Code    | Description   |
|---------|---|
| ELE0028 | Syngene NuGenius Gel Documentation System with Epi LED white lights filter drawer and UV filter |
| ELE7601 | Syngene G:BOX CHEMI XRQ multi fluorescence and chemiluminescence imaging system                 |



ELE0028



ELE7601

# Spotlight on: qPCR

SLS can offer reagents and equipment for the whole qPCR workflow from exclusive suppliers such as Meridian Bioscience.

Key product highlights:

- **Meridian Bioscience SensiFAST® Kits**  
Outstanding assay reproducibility, sensitivity and robustness from both DNA and RNA templates, under fast thermal cycling conditions
- **Blue-Ray Biotech TurboQ**  
TurboQ real-Ttme PCR system is designed for multiplex and routine PCR applications with up to 4 targets

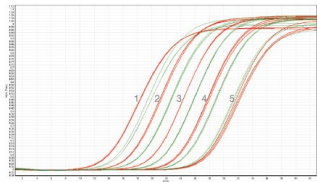
## qPCR Workflow

### RNA Extraction

#### Extraction Kits

| Code     | Description  |
|----------|--|
| BI052071 | Meridian Bioscience ISOLATE II RNA mini kit, 10 Preps  |
| BI052072 | Meridian Bioscience ISOLATE II RNA mini kit, 50 Preps  |
| BI052074 | Meridian Bioscience ISOLATE II RNA micro kit, 10 Preps |
| BI052075 | Meridian Bioscience ISOLATE II RNA micro kit, 50 Preps |

ISOLATE II RNA Mini Kits provide a fast, simple and efficient method for the purification of high-quality total RNA



#### Filter Tips

Biotics racked pipette filter tips, sterile

| Code    | Volume, µL | Pack    |
|---------|------------|---------|
| SLE5146 | 10         | 10 x 96 |
| SLE5148 | 10XL       | 10 x 96 |
| SLE5150 | 20         | 10 x 96 |
| SLE5152 | 100        | 10 x 96 |
| SLE5154 | 200        | 10 x 96 |
| SLE5158 | 1000       | 8 x 96  |
| SLE5160 | 1200       | 8 x 96  |

Contact us for stock availability.

Biotics pipette tips provide accurate and consistent sample delivery



### Sample Preparation

#### Plate Spinner

| Code    | Description                          |
|---------|--------------------------------------|
| SLS1002 | SLS Flowgen plate spinner centrifuge |



#### Cabinet

| Code    | Description  |
|---------|--|
| CAB1024 | Clearline UV/PCR cabinet; economy; glass front; dual UV protection lamp and UV recirculator; integral power socket |



#### Reagents

| Code     | Description   |
|----------|---|
| BI078001 | Meridian Bioscience SensiFAST® probe Lo-ROX one-step kit, 100 reactions |
| BI076001 | Meridian Bioscience SensiFAST® probe No-ROX one-step kit, 100 reactions |
| BI077001 | Meridian Bioscience SensiFAST® probe Hi-ROX one-step kit, 100 reactions |

|           |  |
|-----------|--|
| 46-000-CI | Sterile molecular biology grade water, 100mL |
| LZBE51200 | Lonza AccuGENE molecular biology water, 1L   |



Meridian Bioscience SensiFAST® Kits for rapid, accurate & sensitive quantification

#### Plastics

| Code    | Description   |
|---------|---|
| PCR1192 | 4titude Framestar™ 96 well semi-skirted universal style PCR plate with upstand rigid 2-component white wells, clear frame                                 |
| PCR1262 | 4titude Break-A-Way qPCR plate semi-skirted 0.2mL well working volume, 2-component white wells, black frame, divisible into part plates and 8-strip tubes |
| PCR0948 | 4titude Framestar™ 96 well standard qPCR plate non-skirted rigid 2-component black frame, white wells   |
| PCR0432 | 4titude Framestar™ 384 well qPCR plate ultra-rigid high performance 2-component clear frame, white wells  |
| PCR0564 | 4titude qPCR adhesive plate seals optically clear for imaging including qPCR peelable sheets  |



4titude Framestar PCR plates prevent sample loss using a 2-component design for optimum PCR results

### Run the qPCR

#### qPCR System

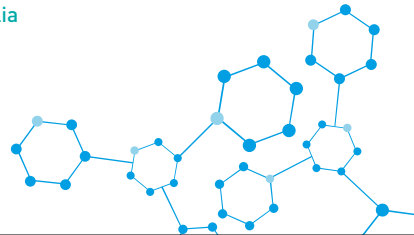
| Code    | Description  |
|---------|--|
| MOL2700 | Blue-Ray Biotech TurboQ Real-Time PCR System fixed 96-well, 4-channel optics enable multiplex detection up to 4 targets per well. CCD base detection system for fast and uniform detection. Laptop included. |



### Meridian Bioscience SensiFAST® Probe One-Step Kit Review

*"I compared the SensiFAST Probe One-Step Kit with another very popular product. SensiFAST Probe One-Step gave improved sensitivity, which was reflected in lower Ct values. Also, this product is a very good price. Value for money!"*

– Peony Fung, Cerberus Sciences, Thebarton, Australia



ROI: +353(0) 1 4069464  
sales@analab.ie  
analab.ie

# Spotlight on: ELISA

SLS can supply products for the set up and analysis of ELISA assays from market leading suppliers such as Thermo Scientific and Tecan.

Key products highlights:

- **Tecan Sunrise Plate Reader**  
The Sunrise absorbance reader is an ideal solution for a range of applications, such as ELISAs, enzyme kinetics, cell viability studies, veterinary assays and many more
- **Nunc Maxisorp Plates**  
Optimized to bind high amounts of IgG (polyclonal), these plates are ideal for antibody sandwich assays (e.g., ELISAs)

## ELISA Workflow

### Coating

Microplate is coated with antigen or capture antibody of interest.

#### Multi Channel Pipettes

| Code    | Description                                    |
|---------|--|
| SLS4966 | SLS Lab Pro 8 channel, 20-300µL                |
| SLS4974 | SLS Lab Pro 12 channel, 20-300µL               |
| PIP0352 | Corning Lambda EliteTouch 8 channel, 30-300µL  |
| PIP0380 | Corning Lambda EliteTouch 12 channel, 30-300µL |



#### Microplates

Thermo Scientific Nunc, 96 well

| Code   | Description                                | Pack |
|--------|--|------|
| 442404 | Immuno, clear, flat, MaxiSorp, non sterile | 60   |
| 437111 | Immuno, black, flat, MaxiSorp, non sterile | 80   |
| 436110 | Immuno, white, flat, MaxiSorp, non sterile | 80   |



Corning, 96 well

| Code | Description   | Pack |
|------|---|------|
| 9017 | EIA/RIA, clear, flat bottom, non treated, non sterile | 100  |
| 9018 | Clear, flat bottom, high bind, non sterile            | 100  |
| 3912 | White, flat bottom, non treated, non sterile          | 100  |
| 3922 | White, flat bottom, high bind, non sterile            | 100  |
| 3915 | Black, flat bottom, non treated, non sterile          | 100  |
| 3925 | Black, flat bottom, high bind, non sterile            | 100  |



Other microplate formats available

### Washing

Remove buffer and wash microplate between each step.

#### Washers

Tecan HydroFlex

| Code    | Description                            |
|---------|--|
| MIC9290 | 8 channel wash head/2x reagent inlets  |
| MIC9292 | 8 channel wash head/4x reagent inlets  |
| MIC9296 | 16 channel wash head/2x reagent inlets |
| MIC9298 | 16 channel wash head/4x reagent inlets |

Tecan HydroSpeed

|         |   |
|---------|---|
| MIC9344 | 96 channel HT wash head/2x reagent inlets |
| MIC9346 | 96 channel HT wash head/3x reagent inlets |
| MIC9348 | 96 channel HT wash head/4x reagent inlets |
| MIC9360 | 384 channel wash head/2x reagent inlets   |
| MIC9362 | 384 channel wash head/3x reagent inlets   |
| MIC9364 | 384cChannel wash head/4x reagent inlets   |



The Tecan HydroFlex provides an automated platform for microplate strip washing, magnetic bead washing and vacuum filtration in 96 well formats, reflecting Tecan 30 years of expertise in Liquid Handling products.

### Blocking & Sample Detection

Blocking agents added to prevent non specific binding of antigens and antibodies to the microplate wall. Sample containing antibody directly conjugated to an enzyme added to plate. If the detection antibody is unlabeled, a secondary enzyme-conjugated detection antibody is required.

#### Reagent Reservoirs

| Code    | Description                             | Pack |
|---------|---|------|
| 4870    | Corning Costar 50mL PS, Sterile, 5/Bag  | 200  |
| 4872    | Corning Costar 100mL PS, Sterile, 5/Bag | 200  |
| SLS9514 | SLS Select 25mL PS, Non Sterile, Bulk   | 100  |
| SLS9520 | SLS Select 50mL PS, Non Sterile, Bulk   | 100  |



#### Sealing Film/Tape

| Code  | Description   | Pack |
|-------|---|------|
| PCRSP | Corning Axygen 80µm polyester sealing film, non sterile, 100/pack | 500  |
| 6570  | Corning 96 well aluminum sealing tape, non sterile                | 100  |
| 6569  | Corning 384 well aluminum sealing tape, non sterile               | 100  |



### Analysis

Enzyme reaction resulting in measurable absorbance, fluorescence or luminescence signals.

#### Plate Readers

Tecan

| Code    | Description  |
|---------|--|
| MIC9310 | Infinite F50 absorbance plate reader, 405, 450, 492 & 620nm                          |
| MIC9250 | Sunrise absorbance plate reader with 4 filter slide, 405, 450, 492 & 620nm           |
| MIC9252 | Sunrise absorbance plate reader with 6 filter slide, 405, 450, 492, 540, 570 & 620nm |
| MIC9254 | Sunrise absorbance plate reader with gradient filter slide, 400-700nm                |
| MIC9264 | Infinite M nano absorbance monochromator plate reader & temperature, 230-1000nm      |



Biochrom

| Code    | Description   |
|---------|---|
| MIC6140 | EZ Read 800 ELISA plate reader with 4 filters: 405, 450, 492 & 620nm      |
| MIC6144 | EZ Read 800 Plus ELISA plate reader with 4 filters, 405, 450, 492 & 620nm |
| MIC8400 | EZ Read 400 ELISA plate reader with 4 filters: 405, 492, 450 & 620nm      |



ROI: +353(0) 1 4069464  
sales@analab.ie  
analab.ie

# Spotlight on: CHROMATOGRAPHY

SLS are partnered with some of the most respected brand names to bring you top quality products for Chromatography.

Key brand names include:

- Honeywell
- Sigma-Aldrich
- SLS Select
- Reagecon
- SPEX CertPrep Ltd
- Kinesis
- Merck

## Chromatography Workflow

### Sample Collection

Assortment of vials, plates & closures compatible for all HPLC/GC systems available in a range of sizes for most applications.

#### Popular products include:

| Code    | Description   |
|---------|---|
| CHR2396 | Smart pack - screw vial 2mL clear label + rubber / PTFE cap |
| CHR2406 | Smart pack - screw vial 2mL amber label + rubber / PTFE cap |
| CHR2362 | Smart pack - snap vial 2mL clear label + rubber / PTFE cap  |
| CHR2370 | Smart pack - snap vial 2mL amber label + rubber / PTFE cap  |
| CHR2320 | Smart pack - crimp vial 2mL clear label + rubber / PTFE cap |
| CHR2330 | Smart pack - crimp vial 2mL amber label + rubber / PTFE cap |



### Sample Preparation

Wide variety of products for preparation and purification techniques.

#### Products available for:

- Filtration including syringe filters
- Solid phase extraction (SPE)
- Solid phase microextraction (SPME)
- Protein precipitation
- Flash chromatography and LPLC
- QuEChERS and dispersive SPE
- Air monitoring
- Sample decomposition
- Purge and trap
- Phospholipid removal
- Dioxin and PCB sample analysis



### Solvents

High purity solvents for analytical applications like GC, (U)HPLC & LC-MS. Including Chromasolv™ and LiChrosolv®

#### Popular products include:

| Code       | Description   |
|------------|---|
| 34863-2.5L | 2-Propanol, Chromasolv™, for HPLC, 99.9%                                    |
| 34850-2.5L | Acetone, Chromasolv™, for HPLC, >=99.8%                                     |
| 34998-2.5L | Acetonitrile Chromasolv™ Plus for HPLC                                      |
| 34888-2.5L | Acetonitrile E Chromasolv™ for HPLC   |
| 34967-2.5L | Acetonitrile lc-ms Chromasolv™  |
| 34851-2.5L | Acetonitrile, Chromasolv™ gradient grade, for HPLC, >=99.9%                 |
| 34856-2.5L | Dichloromethane Chromasolv™ for hplc >=99.8% contains amylene as stabilizer |
| 34859-2.5L | Hexane, Chromasolv™, for HPLC, >=97.0% (GC)                                 |
| 34860-2.5L | Methanol Chromasolv™ for HPLC greater than or equal to 99.9%                |
| 34966-2.5L | Methanol lc-ms Chromasolv™ >=99.9%  |
| 34873-2.5L | N-heptane Chromasolv™ for HPLC  |
| 34875-2.5L | Tert.-butyl methyl ether Chromasolv™ for HPLC                               |
| 34865-2.5L | Tetrahydrofuran Chromasolv™ for HPLC  |
| 34866-2.5L | Toluene Chromasolv™ for HPLC  |
| 34877-2.5L | Water, Chromasolv™ Plus, for HPLC   |

### Chromatography

Range of (U)HPLC/GC columns & Thin Layer Chromatography (TLC) products from Merck, Tosoh & Kinesis. Available for a wide variety of analytical applications.

#### Key brands include:

- apHera
- Ascentis
- Ascentis Express
- Astec
- Discovery
- Discovery BIO
- SUPELCOGEL
- SUPELCOSIL
- Titan C18
- ZIC®
- HILIC
- ZIC®
- pHILIC
- LiChrosorb®
- LiChrospher®
- Superspher®
- Purospher®
- Sequant®
- Chromolith®
- BioShell
- TSKgel
- TOYOPEARL

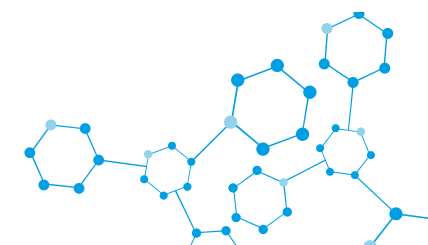


### Certified Reference Materials & Standards

Comprehensive range of products for all applications. Traceable to NIST and Certified to ISO 9001:2015, ISO/IEC 17025:2017 and ISO 17034:2016.

#### Key brands include:

- Fluka™
- TraceCERT®
- Certipur®
- Cerilliant®
- Aquastar®
- HYDRANAL™
- Vetranal™
- Pestanal®



**Honeywell**

**Sigma-Aldrich**  
Lab & Production Materials



**Reagecon**  
Delivering the Correct Result

SPEX CertiPrep Ltd.

**Kinesis**  
Scientific Experts

**AnaLab**

ROI: +353(0) 1 4069464  
sales@analab.ie  
analab.ie

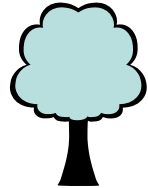
# Spotlight on: SUSTAINABILITY

At SLS, from our supply chain to our in-house practices we aim to be the most sustainable and environmentally friendly distributor to the laboratory market. We have a continuous commitment to offering sustainable products that offer the highest levels of build quality and performance, the longest lifespan and the lowest running costs. Through our dedicated sustainability team, we continuously review our range whilst ensuring our own practices meet the highest environmental standards.

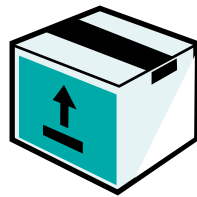
It is our promise to support our customers in their efforts to eliminate needless expenditure and minimise the environmental impact of their research and processes.

Working closely together, we remain committed to helping our customers achieve their own sustainability targets, delivering a better world for us and future generations.

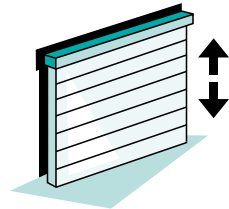
## Sustainability



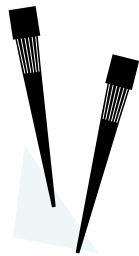
Implementation of a new paperless Warehouse Management System saving approx.  
**160,000** SHEETS of paper a year



All cardboard boxes bought for packaging are from  
**FSC** CERTIFIED SOURCES



**£7K** INVESTMENT in a high speed environmental automatic door at goods in, to prevent heat loss leading to less gas usage



**1.663 TONS** of empty tip boxes removed from customers' sites under our waste to energy scheme. We are currently trialling a **Plastic2Purpose** scheme. Visit [scientificlabs.co.uk/sustainability](http://scientificlabs.co.uk/sustainability) to find our more.

**£150K** INVESTMENT

in a new **insulated roof** to the Nottingham site, reducing heat loss, leading to less gas usage



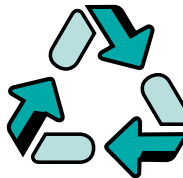
Between 2020-21, we will have planted 1000 trees which will offset 33.33 tons of CO<sub>2</sub> (per year) – minimising our impact on the environment and our carbon footprint



We have joined Nottingham's **Tram2Work** scheme to encourage more employees to use public transport



EVERYONE at the Nottingham site has been given **reusable cups** to eliminate the use of approx  
**60K** PLASTIC CUPS from the vending machine per year



We reuse any **VOID** FILLER MATERIAL sent by our suppliers



**32.95 TONS** of waste converted to energy  
100% waste diverted from landfill equating to a CO<sub>2</sub> reduction equal to four cars off the road for a year or 33 trees planted over their lifetime

**WEEE** WASTE

100 fluorescent tubes recycled  
245kg non-obligated WEEE waste recycled  
101kg hazardous non-obligated WEEE waste recycled

**PLUS** 1.020 tons of waste glass recycled to new glass  
21.6 tons of cardboard recycled, (1.8 tons p/m)  
2.904 tons mixed plastics recycled, (0.242 tons p/m)  
4.5 tons of office paper recycled (379 tons p/m)



ROI: +353(0) 1 4069464  
sales@analab.ie  
analab.ie



**Analab Limited,**  
Rathdown Close,  
Lissie Industrial Estate West,  
Lisburn, Co.Antrim, BT28 2RB

@ [sales@analab.ie](mailto:sales@analab.ie)

[www.analab.ie](http://www.analab.ie)