

# BACK 2 BASICS

## 2021

Essentials for your laboratory including:

- Up to 33% OFF Eppendorf 5920R Refrigerated Centrifuges
- 33% OFF the NEW SLS Lab Basics Digital Orbital Shaker
- 20% OFF Eppendorf Move It® Multi-Channel Pipettes
- 50% OFF SLS Lab Basics my-FUGE 12 Place Centrifuges
- 30% OFF OHAUS Scout® Portable Balances
- 20% OFF NEW SLS Lab Pro Ultrasonic Baths

We stock the leading brands in laboratory supplies



Brought to you by



Valid 1<sup>st</sup> June - 30<sup>th</sup> Sept 2021



# Welcome to the 2021 issue of BACK 2 BASICS

We work closely with a number of our key suppliers to bring you the best deals in the market for selected laboratory products. In this edition of BACK 2 BASICS we have fantastic offers on selected lines from SLS Lab Pro, SLS Select and SLS Lab Basics brands alongside those from world renowned manufacturers such as Meridian Bioscience, Eppendorf, Corning, Gilson, Mettler Toledo, Ohaus, Jenway, Lonza and Benchmark.

To benefit from the prices offered in this brochure, please use the appropriate promotional code when placing your order.

In addition to the brochure, visit our website for supplementary 'BACK 2 BASICS EXTRA' online offers for even more great savings on many other fantastic products.

Please hurry, these discounts are only valid until **30<sup>th</sup> September 2021**.

Kind regards,  
Analab Team



Brought to you by  
**SCIENTIFIC  
LABORATORY  
SUPPLIES**

## KEY to product symbols:



New products



Length of  
warranty



Made in Britain



Sustainability

**DELIVERING PRECISELY THE QUALITY YOU NEED**

## Eppendorf 5920R Refrigerated Centrifuges

3  
YEARS

eppendorf

Delivers extraordinary high capacity in a very compact and ergonomic product design. It has similar dimensions as competing refrigerated 3L models and yet features a superior capacity, making it the ideal instrument for high-throughput applications.

UP TO  
**33%  
OFF**

- Multi-lingual operating system, large backlit display, saves up to 99 user-defined programs
- FastTemp pro® function for automated pre-cooling
- High centrifugation speed of up to 21194xg (13700rpm)
- Aerosol-tight QuickLock® caps and lids
- Centrifuge lid with soft-touch lid closure
- Quiet operation to improve your work environment
- Automatic rotor recognition and imbalance detection
- Temperature range from -11 to 40°C



Code	Supplied with	Offer Price, €	Offer Price, £
<b>B2B7362</b>	S-4x1000 rotor, high-capacity buckets, adapters for 15/50mL conical tubes	<b>10714.00</b>	<b>8928.00</b>
<b>B2B7364</b>	S-4x1000 rotor, round buckets, adapters for 15/50mL conical tubes	<b>10349.00</b>	<b>8624.00</b>
<b>B2B7366</b>	S-4x1000 rotor, plate/tube buckets, adapters for 15/50mL conical tubes	<b>10349.00</b>	<b>8624.00</b>
<b>B2B7368</b>	S-4xUniversal-Large rotor, universal buckets, adapters for 13/16mm round-bottom tubes	<b>10954.00</b>	<b>9128.00</b>
<b>B2B7370</b>	S-4xUniversal-Large rotor, universal buckets, adapters for 5/15/25/50mL conical tubes and plates	<b>11242.00</b>	<b>9368.00</b>



## Eppendorf Research Plus Move It® Multi-channel Pipettes with Adjustable Tip Spacing

NEW 3 YEARS

eppendorf

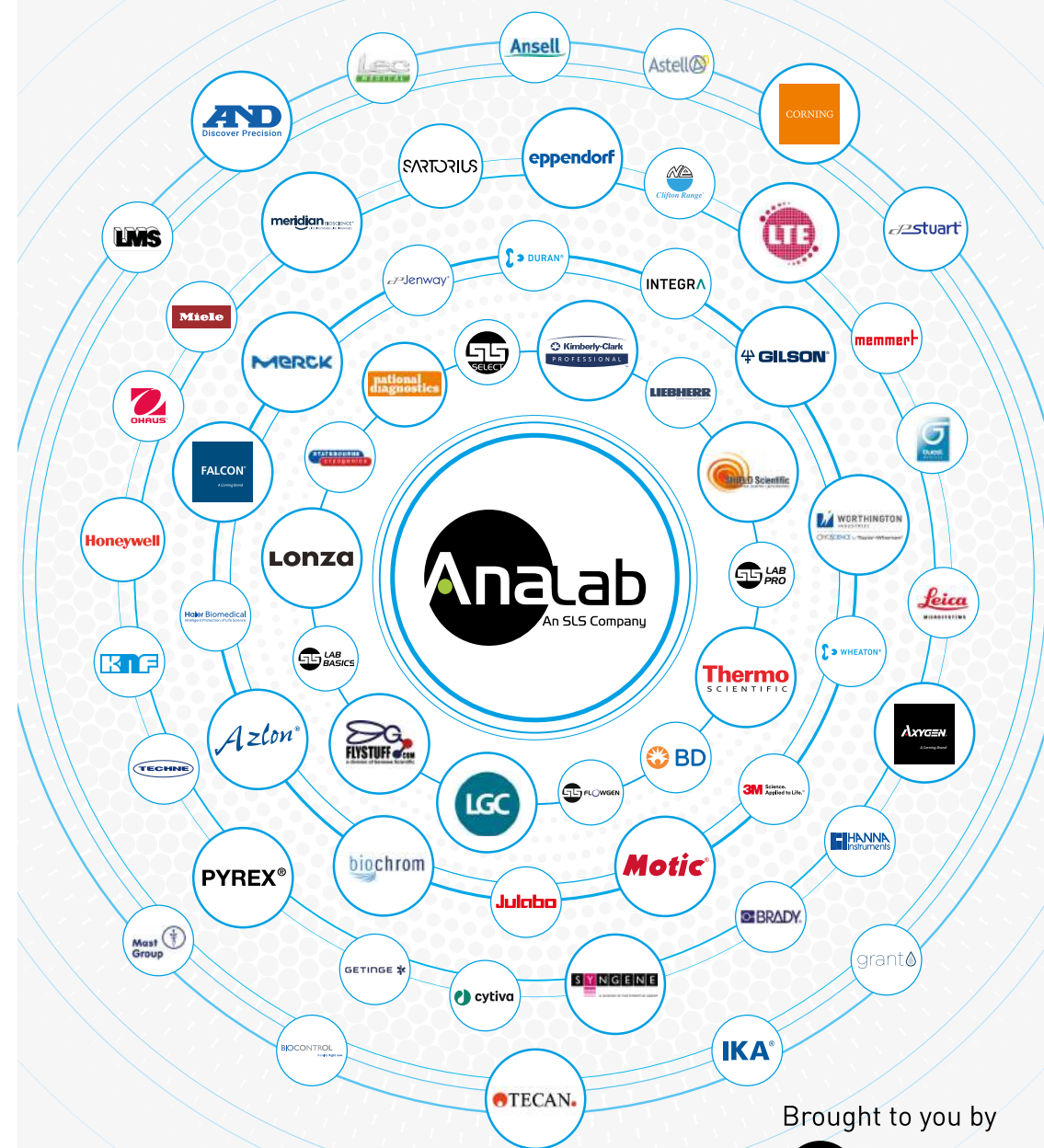
Do you frequently transfer samples between different vessel formats, such as between tubes and plates, and strive for more efficient and safe solutions? The new adjustable tip spacing pipette Move It® accelerates and simplifies synchronous pipetting of a series of samples. A unique design without tubing connections results in increased precision and durability as well as user and sample safety.

- Efficient sample transfers from one vessel type to another.
- Pre-defined settings allow for quick switches back and forth between different formats
- Time-saving thanks to rotatable pipette head – 360°
- Tubeless system for reliability and reproducible results- no cable tangle and tubing-porosity, for consistently reliable robustness and precision



Code	Channel	Volume Range, µL	Tip Spacing Range, mm	Colour Code	Offer Price, €	Offer Price, £
<b>E3125000150</b>	4	15 - 300	9 - 33	Orange	<b>1103.00</b>	<b>919.00</b>
<b>E3125000184</b>	4	120 - 1200	9 - 33	Dark green	<b>1103.00</b>	<b>919.00</b>
<b>E3125000168</b>	6	15 - 300	9 - 20	Orange	<b>1147.00</b>	<b>956.00</b>
<b>E3125000192</b>	6	120 - 1200	9 - 20	Dark green	<b>1147.00</b>	<b>956.00</b>
<b>E3125000176</b>	8	15 - 300	9 - 14	Orange	<b>1195.00</b>	<b>996.00</b>
<b>E3125000206</b>	8	120 - 1200	9 - 14	Dark green	<b>1195.00</b>	<b>996.00</b>

## ALL YOUR FAVOURITE BRANDS IN ONE PLACE



Brought to you by







**KIMTECH™**

# Prizm

Multi-Layered Neoprene Nitrile Gloves

The perfect combination of precision, protection and comfort for the most demanding scientific applications

## PRECISION

Ultra fingertip grip helps reduce risk of drops and breakage accidents in both wet and dry conditions

## PROTECTION

Crafted with a proprietary combination of polymers with proven Type A chemical splash protection

## COMFORT

US Ergonomics certified

**For Scientists, By Scientists**

Visit [kimtech.eu](https://kimtech.eu) to find out more



## Unisex Howie Style Lab Coats

A unisex coat in white 245g/m<sup>2</sup> polyester cotton. The coats have an overlapped, studded front to allow quick removal and give extra protection.

- One jetted chest breast pocket
- Two jetted hip pockets
- Nine stud fastenings with broad underlay to avoid gaping
- Knitted cuffs
- Back darts



Code	Chest Size, cm	Offer Price, €	Offer Price, £
<b>B2B06006</b>	88	17.71	14.76
<b>B2B06008</b>	92	17.71	14.76
<b>B2B06010</b>	96	17.71	14.76
<b>B2B06012</b>	100	17.71	14.76
<b>B2B06014</b>	108	17.71	14.76
<b>B2B06016</b>	112	17.71	14.76
<b>B2B06018</b>	116	17.71	14.76
<b>B2B06020</b>	122	17.71	14.76



## Meker Portable Burners

Code	Description	Offer Price, €	Offer Price, £
<b>B2B06102</b>	Burner	40.30	33.60
<b>B2B06104</b>	Cartridge, 240g	5.30	4.42



## EVO Line Waste Containers

Disposable containers for the disposal of special hospital and laboratory waste. Extremely solid and shock resistant at both high and low temperature, the containers of the EVO line guarantee a hermetic seal by means of the peripheral adhesive on the lid.

- Lateral and central handles tested for twice the max weight
- Stacking up to a maximum of 3m with full load
- High penetration resistance
- Maximum filling level indicator
- No emission of any harmful gas during the incineration process



Code	Capacity, L	Lid	Ext Dims, w x d x h, mm	Max Load, kg	Offer Price, €	Offer Price, £
<b>B2B7302</b>	30	Single	400 x 300 x 330	15	6.56	5.47
<b>B2B7306</b>	50	Single	400 x 300 x 560	20	7.64	6.37
<b>B2B7310</b>	60	Single	400 x 300 x 650	25	7.73	6.44



## SLS Select Centrifuge Tubes



- Certified RNase and DNase free
- Sterile
- Manufactured from high clarity medical grade polypropylene
- Leak proof flat polypropylene cap
- Printed graduations and a large writing area for sample identifications
- Racked tubes are packaged in recyclable card racks
- Lot traceability
- RCF: 9000 (15 and 50mL tubes)

UP TO  
**75%  
OFF**



Supplied in packs of 500

Code	Description	Volume, mL	Offer Price, €	Offer Price, £
<b>B2B06192</b>	Loose	15	<b>43.20</b>	<b>36.00</b>
<b>B2B06194</b>	Racked	15	<b>46.80</b>	<b>39.00</b>
<b>B2B06196</b>	Loose	50	<b>50.00</b>	<b>42.00</b>
<b>B2B06198</b>	Racked	50	<b>58.00</b>	<b>48.00</b>
<b>B2B06200</b>	Skirted, bagged	50	<b>56.00</b>	<b>47.00</b>

Slides with Ground Edge



## SLS Select Slides with Ground Edge 76 x 26 x 1mm

LOW  
PRICE

Supplied in packs of 50

Code	Description	List Price, €	List Price, £
<b>MIC2000</b>	Plain	2.73	2.10
<b>MIC2002</b>	Twin frost	2.99	2.30



## Infrared Forehead Thermometer

Fast and contactless, with blue backlit LCD display.

Code	List Price, €	List Price, £
<b>COV1037</b>	25.95	19.95

## Parafilm® M Sealing Film

- Stretches up to 200% and clings even around irregular shapes and surfaces
- Free of plasticisers and consists primarily of polyolefins and paraffin waxes
- Conforms to the provisions of the US FDA when used below 55°C and observance of GMP (Good Manufacturing Practice)
- Resistant up to 48 hours against many polar substances e.g. saline solutions, inorganic acids and alkaline solutions
- Temperature range (continuous use): -45 to +50°C

UP TO  
**60%  
OFF**



Code	Dims, mm x m	Offer Price, €	Offer Price, £
<b>B2B06094</b>	50 x 75	<b>27.70</b>	<b>23.10</b>
<b>B2B06096</b>	100 x 38	<b>29.30</b>	<b>24.40</b>
<b>B2B06098</b>	100 x 75	<b>49.90</b>	<b>41.60</b>
<b>B2B06100</b>	500 x 15	<b>60.00</b>	<b>50.00</b>



## Swann-Morton Qlicksmart BladeFLASK Scalpel Blade Remover

A safe, quick and easy single-handed method for scalpel blade removal. The puncture proof sharps container shuts off automatically when it is full, and can be disposed of safely. Suitable for wall or surface mounting using the purpose designed bracket.

Swann-Morton LIMITED



**25%  
OFF**

Code	Description	Offer Price, €	Offer Price, £
<b>B2B06042</b>	BladeFLASK scalpel blade remover	26.30	21.90
<b>B2B06044</b>	Mounting bracket	8.82	7.35

## SLS Select Low Form Beakers

- Ideal for general laboratory use
- White graduations and marking spot
- Made from high quality borosilicate glass
- High chemical and thermal resistance
- Staple item of any laboratory
- Standards equivalent to ISO 3819



**60%  
OFF**

Code	Capacity, mL	Dims, Ø x h, mm	Pack	Offer Price, €	Offer Price, £
<b>B2B06332</b>	25	34 x 50	12	5.30	4.42
<b>B2B06334</b>	50	42 x 60	12	5.76	4.80
<b>B2B06336</b>	100	50 x 70	12	6.46	5.38
<b>B2B06338</b>	150	60 x 80	12	8.30	6.92
<b>B2B06340</b>	250	70 x 95	12	10.18	8.48
<b>B2B06342</b>	400	80 x 110	12	12.91	10.76
<b>B2B06344</b>	600	90 x 125	6	8.18	6.82
<b>B2B06346</b>	1000	105 x 145	6	12.10	10.08

## SLS Select Conical Flasks

- With white graduations and marking spot
- Made from high quality borosilicate glass
- High chemical and thermal resistance
- Used for many laboratory applications
- Standards equivalent to ISO 1773

**60%  
OFF**



Code	Capacity, mL	Dims, h x Ø x neck Ø, mm	Pack	Offer Price, €	Offer Price, £
<b>B2B06358</b>	50	80 x 54 x 24	12	14.98	12.48
<b>B2B06360</b>	100	105 x 64 x 29	12	13.39	11.16
<b>B2B06362</b>	250	145 x 85 x 31	6	8.88	7.40
<b>B2B06364</b>	500	184 x 103 x 36	6	13.25	11.04
<b>B2B06366</b>	1000	131 x 214 x 42	6	18.91	15.76



## Axygen® Microcentrifuge Tube Boxes

Polypropylene. -80 to 121°C. 100 x 1.5 to 2.0mL tube capacity. **Supplied in packs of 5**

Code	Colour	Offer Price, €	Offer Price, £
<b>B2B7108</b>	Assorted	34.80	29.00
<b>B2B7110</b>	Clear	31.30	26.10

**38%  
OFF**



## SLS Select Media Bottles



- Perfect for everyday laboratory use
- Suitable for many applications, such as storage of culture media
- Made from high quality borosilicate glass 3.3 to ISO 3585
- Heat and chemical resistance
- GL45 blue polypropylene cap and pouring ring
- White graduations and marking spot
- Sloped shoulders for easy pour
- Standards to ISO 4796-1

Supplied in packs of 10



Code	Capacity, mL	Dims, Ø x h, mm	Offer Price, €	Offer Price, £
<b>B2B06348</b>	100	56 x 100	13.82	11.52
<b>B2B06354</b>	250	70 x 138	26.40	22.00
<b>B2B06350</b>	500	86 x 176	15.74	13.12
<b>B2B06352</b>	1000	101 x 225	18.96	15.80
<b>B2B06356</b>	2000	136 x 260	57.00	47.60



## SLS Select Hand Sanitiser

70% alcohol gel, kills 99.9% of bacteria.

Code	Pack	List Price, €	List Price, £
<b>COV1200</b>	100mL	0.77	0.59
<b>COV12000</b>	10 x 100mL	7.48	5.75

## SLS Select Cylinders



- Calibrated to Class B tolerances
- Can be used for many applications where a high accuracy level of volume measurement isn't critical
- Made from high quality borosilicate glass
- High chemical and thermal resistance
- Sturdy hexagonal glass base
- White graduations
- Standards equivalent to ISO 4788



Code	Capacity, mL	Height, mm	Pack	Offer Price, €	Offer Price, £
<b>B2B06368</b>	10	135	2	2.88	2.40
<b>B2B06370</b>	25	160	2	3.26	2.72
<b>B2B06372</b>	50	195	2	3.80	3.17
<b>B2B06374</b>	100	250	2	4.57	3.81
<b>B2B06376</b>	250	300	2	7.80	6.50
<b>B2B06378</b>	500	350	2	11.90	9.92
<b>B2B06380</b>	1000	430	Each	8.86	7.38



## Gratnells Trays

5  
YEARS

Gratnells  
Everything in its place.

Handy trays with robust, polypropylene construction.



55%  
OFF

Code	Description	Colour	Dims, l x w x h, mm	Offer Price, €	Offer Price, £
B2B06082	F1 shallow	Royal blue	427 x 312 x 75	3.78	3.15
B2B06084	F1 shallow	Flame red	427 x 312 x 75	3.78	3.15
B2B06086	F1 shallow	Translucent	427 x 312 x 75	3.78	3.15
B2B06090	F2 deep	Royal blue	427 x 312 x 150	6.35	5.29
B2B06092	F2 deep	Flame red	427 x 312 x 150	6.35	5.29
B2B06088	F2 deep	Translucent	427 x 312 x 150	6.35	5.29

## SLS Select BenchSafe Bench Protection



Strong, tear-resistant, waterproof polyethylene surface.

60%  
OFF



Code	Description	Dims, w x l, mm	Pack	Offer Price, €	Offer Price, £
B2B06046	BenchSafe	490 x 50000	1 roll	84.00	70.00
B2B06048	BenchSafe	460 x 570	50 sheets	89.00	74.00
B2B06050	BenchSafe	600 x 490	100 sheets	86.00	72.00
B2B06052	BenchSafe Plus	600 x 490	50 sheets	67.00	56.00

## Plastic Tray Trolleys

- Lightweight
- Supplied with precision bearing castors including 2 brakes
- Ergonomic in design and attractive in appearance
- Heavy duty construction from high quality, nylon fibre blended polymers

UP TO  
30%  
OFF



Code	Shelves	Dims, w x d x h, mm	Platform Dims, mm	Max Load, kg	Offer Price, €	Offer Price, £
B2B06076	3	460 x 750 x 980	630 x 424	150	128.00	107.00
B2B06078	2	460 x 750 x 940	630 x 424	100	109.00	91.00
B2B06080	2	513 x 990 x 970	866 x 500	250	212.00	177.00



## BRAND Transferpette® S Pipette Kits



Precise and easy to use, the Transferpette® S air displacement pipette allows you to work efficiently and ergonomically with both small and large volumes. Low operating forces and a short stroke ensure relaxed pipetting, even during long pipetting series. The volume-change protection is also easy to operate with gloves on and protects your set volume against accidental adjustment.

- Colour code on volume adjustment wheel, shaft and volume-change protection
- Can be calibrated easily and without tools thanks to Easy Calibration technology
- Slim shaft for sampling from narrow vessels (centrifuge tubes)



Code	Description	Contains	Offer Price, €	Offer Price, £
<b>B2B7280</b>	Starter kit micro	3 x pipettes (0.1-25µL, 0.5-10µL, 10-100µL); 3 x TipBox pipette tips (2 x 0.5-20µL, 1 x 2-200µL); 3 x shelf mounts	<b>485.00</b>	<b>404.00</b>
<b>B2B7282</b>	Starter kit midi	3 x pipettes (2-20µL, 20-200µL, 100-1000µL); 3 x TipBox pipette tips (2 x 2-200µL, 1 x 50-1000µL); 3 x shelf mounts	<b>458.00</b>	<b>382.00</b>
<b>B2B7284</b>	Starter kit macro	3 x pipettes (100-1000µL, 500-5000µL, 1000-10000µL); 3 x TipBox pipette tips (50-1000µL, 0.5-5mL, 1-10mL); 3 x shelf mounts	<b>485.00</b>	<b>404.00</b>
<b>B2B7286</b>	Starter kit standard	3 x pipettes (0.5-10µL, 10-100µL, 100-1000µL); 3 x TipBox pipette tips (0.5-20µL, 2-200µL, 50-1000µL); 3 x shelf mounts	<b>470.00</b>	<b>392.00</b>
<b>B2B7288</b>	Package 1	5 x pipettes (0.1-25µL, 0.5-10µL, 2-20µL, 20-200µL, 100-1000µL); 3 x TipBox pipette tips (0.5-20µL, 2-200µL, 50-1000µL); benchtop rack for 6 pipettes	<b>792.00</b>	<b>660.00</b>
<b>B2B7290</b>	Package 2	5 x pipettes (0.5-10µL, 10-100µL, 20-200µL, 50-1000µL, 500-5000µL); 4 x TipBox pipette tips (0.5-20µL, 2-200µL, 50-1000µL, 0.5-5mL); benchtop rack for 6 pipettes	<b>792.00</b>	<b>660.00</b>

## SLS Select Reagent Reservoirs



- "V" shaped well design for maximum reagent recovery
- Easy to read graduation markings located on the top edge with a fill line on inner walls
- Drip free pour-off spouts at every corner
- Manufactured in a clean room with sterile versions certified as RNase/DNase and pyrogen free
- Wide base for stability
- Tiered wall design prevents deformation when handling and reduces the chance of spills
- Nesting design allows easy separation that reduces the chance of warping or damage
- Lot numbers indicated on sterile versions
- Polystyrene



Code	Capacity, mL	Sterility	Inner Pack	Pack	Offer Price, €	Offer Price, £
<b>B2B06039</b>	25	Sterile	1	100	<b>68.00</b>	<b>57.00</b>
<b>B2B06041</b>	25	Sterile	5	200	<b>82.00</b>	<b>68.00</b>
<b>B2B06043</b>	25	Non sterile	Bulk	100	<b>28.80</b>	<b>24.00</b>
<b>B2B06045</b>	50	Sterile	1	100	<b>71.00</b>	<b>59.00</b>
<b>B2B06047</b>	50	Sterile	5	200	<b>86.00</b>	<b>72.00</b>
<b>B2B06049</b>	50	Non sterile	Bulk	100	<b>30.50</b>	<b>25.40</b>
<b>B2B06051</b>	100	Sterile	1	100	<b>84.00</b>	<b>70.00</b>
<b>B2B06053</b>	100	Sterile	5	200	<b>98.00</b>	<b>82.00</b>
<b>B2B06055</b>	100	Non sterile	Bulk	100	<b>32.00</b>	<b>26.70</b>



## SLS Lab Pro Variable Volume Pipettes

3  
YEARS



The SLS Lab Pro pipettes offer superior quality at an affordable price. These are lightweight pipettes with a handle that fits naturally in the hand. They feature a volume locking system for safe, secure pipetting. A lubricated piston assembly offers very light pipetting forces.

- Adjustable tip ejector button to adapt to both right and left-handed users
- Clip mechanism allows easy and safe removal of tip ejector



Code	Channel	Volume Range, µL	Offer Price, €	Offer Price, £
<b>B2B06292</b>	Single	0.2 - 2	126.00	105.00
<b>B2B06294</b>	Single	1 - 10	126.00	105.00
<b>B2B06296</b>	Single	2 - 20	126.00	105.00
<b>B2B06298</b>	Single	10 - 100	126.00	105.00
<b>B2B06300</b>	Single	20 - 200	126.00	105.00
<b>B2B06302</b>	Single	100 - 1000	126.00	105.00
<b>B2B06304</b>	Single	500 - 5000	144.00	120.00
<b>B2B06306</b>	Single	1000 - 10000	144.00	120.00
<b>B2B06308</b>	8	0.5 - 10	282.00	235.00
<b>B2B06310</b>	8	2 - 20	282.00	235.00
<b>B2B06312</b>	8	20 - 200	282.00	235.00
<b>B2B06314</b>	8	20 - 300	282.00	235.00
<b>B2B06316</b>	12	0.5 - 10	342.00	285.00
<b>B2B06318</b>	12	2 - 20	342.00	285.00
<b>B2B06320</b>	12	20 - 200	342.00	285.00
<b>B2B06322</b>	12	20 - 300	342.00	285.00

## National Diagnostics AquaPor Agarose

**national  
diagnostics**

Extremely reliable and convenient agaroses that dissolve easily with low boil over to produce clear, strong gels. Genetic Technology Analysis Certified (GTAC). Certified DNase, RNase, and protease free.



Code	Description	Pack	Offer Price, €	Offer Price, £
<b>B2B7042</b>	AquaPor LE agarose (low EEO)	500g	440.00	367.00
<b>B2B7044</b>	AquaPor LM agarose (low melting temperature)	100g	461.00	384.00



## SLS Lab Basics Variable Volume Pipettes

3  
YEARS



### Single Channel:

- Ergonomic design ensuring light weight & soft plunger movement
- Click-stop system for volume selection
- Colour coded for easy identification
- Calibration conforms to EN-ISO 8655 with report enclosed with every pipette

### Multi Channel:

- Smooth and light tip loading and ejection
- Leak free sealing of tips
- Manifold is easily removable, fully autoclavable and can rotate 360° for easy right or left hand operation

Code	Channel	Volume Range, µL	Compatible Tips	Offer Price, €	Offer Price, £
<b>B2B06156</b>	Single	0.1 - 2.5	10µL/10XL	55.00	46.00
<b>B2B06158</b>	Single	0.5 - 10	10µL/10XL	55.00	46.00
<b>B2B06160</b>	Single	2 - 20	10XL	55.00	46.00
<b>B2B06162</b>	Single	5 - 50	20µL/100µL	55.00	46.00
<b>B2B06164</b>	Single	10 - 100	100µL/200µL	55.00	46.00
<b>B2B06166</b>	Single	20 - 200	200µL/300µL	55.00	46.00
<b>B2B06168</b>	Single	100 - 1000	1000µL/1250µL	55.00	46.00
<b>B2B06170</b>	Single	500 - 5000	—	62.00	52.00
<b>B2B06172</b>	Single	1000 - 10000	—	65.00	54.00
<b>B2B06174</b>	8	0.5 - 10	10µL/10XL	191.00	159.00
<b>B2B06176</b>	8	5 - 50	20µL/100µL	191.00	159.00
<b>B2B06178</b>	8	10 - 100	100µL/200µL	191.00	159.00
<b>B2B06180</b>	8	20 - 200	200µL/300µL	191.00	159.00
<b>B2B06182</b>	8	30 - 300	200µL/300µL	191.00	159.00



UP TO  
69%  
OFF

## SLS Lab Basics Bottle Top Dispensers

2  
YEARS A



Ergonomically designed for easy use and outstanding performance, in addition to being extremely durable and reliable. Calibrated in ISO 17025 accredited calibration facility.

- Fully autoclavable
- Easy re-calibration: a single tool to recalibrate
- Volume lock: smooth and accurate volume setting
- Universal bottle adaptor: comes with 4 additional adaptors for regular bottle sizes
- Uncomplicated mounting: snap-fit mounting of discharge tube

48%  
OFF



Code	Volume Range, mL	Graduations, mL	Offer Price, €	Offer Price, £
<b>B2B06184</b>	1 - 10	0.2	114.00	95.00
<b>B2B06186</b>	2.5 - 30	0.5	132.00	110.00
<b>B2B06188</b>	5 - 60	1.0	132.00	110.00



# Corning® Lambda™ Plus Pipette Starter Kit



Engineered to provide the highest levels of accuracy, reproducibility, and comfort. Features smooth plunger movement and extremely low pipetting forces. A locking mechanism prevents accidental change to the volume setting. Designed to maintain their calibration, even after repeated use and autoclaving. A key is included with each pipette for easy in-house calibration.

- Factory calibrated to strict ISO 8655 standards
- Fully autoclavable and UV resistant
- Designed for universal fit with all common brands of pipette tips
- Adjustable tip ejector

**Includes:** 4 x single-channel pipettes (0.5 to 10µL, 2 to 20µL, 20 to 200µL, 100 to 1000µL), universal carousel rack for 6 single channel pipettes, 3 x Corning DeckWorks™ pipette tips (10µL, 200µL, 1000µL).



Code	Offer Price, €	Offer Price, £
B2B06428	442.00	368.00

# Corning® Lambda™ EliteTouch™ Pipette Starter Kit



Engineered to provide the highest level of ergonomic, accuracy, and precision. Features smooth plunger movement and extremely low pipetting forces to reduce wrist strain and fatigue (RSI). Coloured pushbuttons (included) can help define user or application for sample safety and lower risk of cross contamination.

- Ergonomic handle design for perfect fit for both right and left hand
- Convenient one-hand volume setting with auto-lock system
- 4-digit counter for greater precision, perfectly positioned for visibility at all times
- Fully autoclavable and UV resistant
- Easy in-lab calibration helps you quickly adjust your pipettor to various liquid types
- Individually tested and supplied with a certificate of quality

**Includes:** 4 x single channel pipettes (0.5 to 10µL, 2 to 20µL, 20 to 200µL, 100 to 1000µL), universal linear stand for 4 single channel pipettes, 3 x Corning® DeckWorks pipette tips (10µL, 200µL, 1000µL), 4 x 3 x coloured pushbuttons.



Code	Offer Price, €	Offer Price, £
B2B06432	487.00	406.00



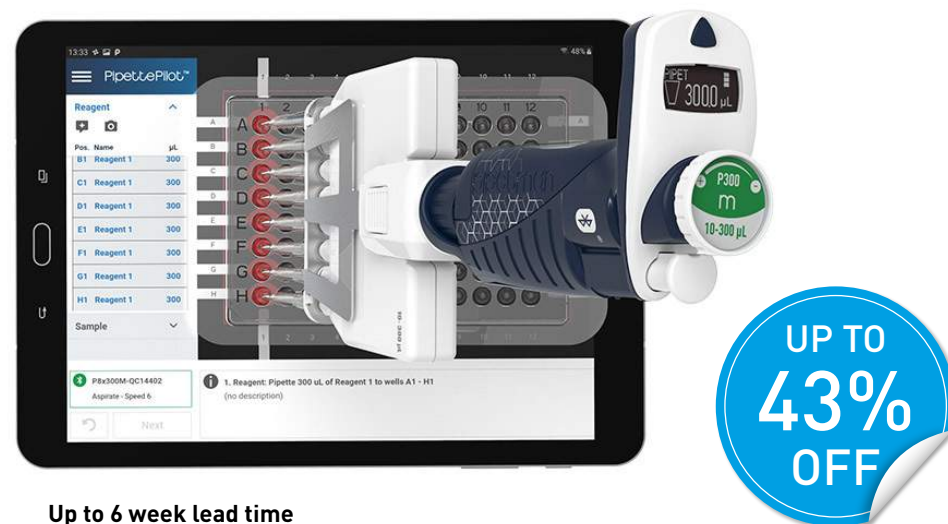
## Gilson PIPETMAN® M Connected Pipettes

1  
YEAR

**GILSON®**

PIPETMAN® M Connected bluetooth enabled electronic pipettes that offer accuracy and precision in both standard and repetitive pipetting modes. Connect the pipette to the Gilson PipetteScope™ app and know exactly when the pipette needs to be calibrated, access service history reports and gain visibility of the pipette usage analytics. With the PIPETMAN® M Connected software, create custom protocols. Used together with TRACKMAN® Connected, the pipette interacts in real time with the device to plan, execute and track pipetting protocols.

- Motorised piston allows for high pipetting reproducibility and accuracy
- Requiring virtually no pipetting forces to aspirate and dispense samples
- Helps reduce pipetting fatigue and increase pipetting efficiency



Up to 6 week lead time

Code	Model	Channel	Volume Range, µL	Offer Price, €	Offer Price, £
<b>B2B7146</b>	P10M	Single	0.5 - 10	319.00	266.00
<b>B2B7148</b>	P20M	Single	2 - 20	319.00	266.00
<b>B2B7150</b>	P100M	Single	5 - 100	319.00	266.00
<b>B2B7152</b>	P200M	Single	20 - 200	319.00	266.00
<b>B2B7154</b>	P300M	Single	20 - 300	319.00	266.00
<b>B2B7156</b>	P1200M	Single	100 - 1200	319.00	266.00
<b>B2B7158</b>	P5000M	Single	500 - 5000	319.00	266.00
<b>B2B7160</b>	P10mLM	Single	1000 - 10000	319.00	266.00
<b>B2B7162</b>	P8x10M	8	0.5 - 10	588.00	490.00
<b>B2B7164</b>	P8x20M	8	1 - 20	662.00	552.00
<b>B2B7166</b>	P8x100M	8	10 - 100	588.00	490.00
<b>B2B7168</b>	P8x200M	8	20 - 200	662.00	552.00
<b>B2B7170</b>	P8x300M	8	10 - 300	588.00	490.00
<b>B2B7172</b>	P8x1200M	8	50 - 1200	662.00	552.00
<b>B2B7174</b>	P12x10M	12	0.5 - 10	588.00	490.00
<b>B2B7176</b>	P12x20M	12	1 - 20	662.00	552.00
<b>B2B7178</b>	P12x100M	12	10 - 100	588.00	490.00
<b>B2B7180</b>	P12x200M	12	20 - 200	662.00	552.00
<b>B2B7182</b>	P12x300M	12	10 - 300	588.00	490.00
<b>B2B7184</b>	P12x1200M	12	50 - 1200	662.00	552.00

### Accessories

TRACKMAN® Connected is a tablet designed to communicate with Gilson's PIPETMAN® M Connected via Bluetooth, improving efficiency by tracking pipetting tasks. The tablet interacts in real-time with the pipette and guides the user through their protocol with the PipettePilot™ app.

Code	Description	Offer Price, €	Offer Price, £
<b>B2B7186</b>	PIPETMAN® M electronic charging carousel for 5 pipettes	353.00	294.00
<b>B2B7188</b>	TRACKMAN® connected tablet	1345.00	1121.00



## Gilson PIPETMAN® M Connected Packages

1  
YEAR

Promotional packages below featuring combinations of pipettes and accessories.

Code	Description	Contains	Offer Price, €	Offer Price, £
<b>B2B7190</b>	Single channel pipette package	PIPETMAN® M electronic charging carousel for 5 pipettes, 3 x PIPETMAN® M single channel pipettes	<b>1283.00</b>	<b>1069.00</b>
<b>B2B7192</b>	8 channel pipette package	TRACKMAN® Connected tablet, PIPETMAN® M electronic charging carousel for 5 pipettes, 1 x PIPETMAN® M 8 channel pipette, and 2 x PIPETMAN® M single channel pipettes	<b>2471.00</b>	<b>2059.00</b>
<b>B2B7194</b>	12 channel pipette package	TRACKMAN® Connected tablet, PIPETMAN® M electronic charging carousel for 5 pipettes, 1 x PIPETMAN® M 12 channel pipette, and 2 x PIPETMAN® M single channel pipettes	<b>2531.00</b>	<b>2109.00</b>



42%  
OFF

TAE Buffer

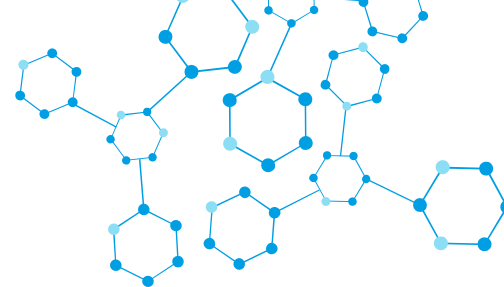


### National Diagnostics TAE Buffer

50x concentration solution of 2M Tris-acetate and 100mM Na EDTA in distilled/deionized water (pH 8.3 at 1x concentration). 18 MegOhm water and 0.2 Micron filtration.

Code	Pack	Offer Price, €	Offer Price, £
<b>B2B7046</b>	1L	<b>55.00</b>	<b>46.10</b>

UP TO  
33%  
OFF



**GILSON®**

## Pipettes

Choose the appropriate number of PIPETMAN® M Connected pipettes from the list below to complete your chosen package.

Code	Channel	Model	Volume Range, µL
<b>B2B7320</b>	Single	P10M	0.5 - 10
<b>B2B7322</b>	Single	P20M	2 - 20
<b>B2B7324</b>	Single	P100M	5 - 100
<b>B2B7326</b>	Single	P200M	20 - 200
<b>B2B7328</b>	Single	P300M	20 - 300
<b>B2B7330</b>	Single	P1200M	100 - 1200
<b>B2B7332</b>	Single	P5000M	500 - 5000
<b>B2B7334</b>	Single	P10mLM	1000 - 10000
<b>B2B7336</b>	8	P8x10M	0.5 - 10
<b>B2B7338</b>	8	P8x20M	1 - 20
<b>B2B7340</b>	8	P8x100M	10 - 100
<b>B2B7342</b>	8	P8x200M	20 - 200
<b>B2B7344</b>	8	P8x300M	10 - 300
<b>B2B7346</b>	8	P8x1200M	50 - 1200
<b>B2B7348</b>	12	P12x10M	0.5 - 10
<b>B2B7350</b>	12	P12x20M	1 - 20
<b>B2B7352</b>	12	P12x100M	10 - 100
<b>B2B7354</b>	12	P12x200M	20 - 200
<b>B2B7356</b>	12	P12x300M	10 - 300
<b>B2B7358</b>	12	P12x1200M	50 - 1200



## SLS Select Serological Pipettes



- Manufactured in compliance with the current versions of the ISO 13485 and FDA CFR 21 Part 820, cGMP
- Made from USP Class VI polystyrene resin
- Crisp, dark ascending and descending as well as negative graduations
- Colour-coded rings for easy identification
- Plugged
- Non-pyrogenic
- RNase-/DNase-free
- Sterile



Code	Volume, mL	Packaging	Inner Pack	Pack	Offer Price, €	Offer Price, £
B2B06382	1	Individual	100	1000	68.00	57.00
B2B06384	1	Bulk	25	1000	57.00	47.20
B2B06386	2	Individual	100	1000	76.00	63.00
B2B06388	2	Bulk	25	1000	57.00	47.20
B2B06392	5	Individual	50	200	21.00	17.20
B2B06390	5	Bulk	25	500	54.00	44.80
B2B06394	10	Individual	50	200	22.00	18.00
B2B06396	10	Bulk	25	500	66.00	55.00
B2B06400	25	Individual	50	200	49.00	41.20
B2B06398	25	Bulk	20	200	70.00	58.00
B2B06402	50	Individual	20	100	60.00	50.00

## SLS Lab Basics Pipette Filler



Lightweight, UV resistant material, featuring adjustable valves and 3 modes (high, low, gravity). Filling and dispensing speed is easily set using the same hand by pressing the large mode button. Uses standard 0.45µm hydrophobic filters. Supplied with charger, bench stand, magnetic /fixable wall mount and 5 coloured nose cones.



Code	Offer Price, €	Offer Price, £
B2B06190	120.00	100.00

## Corning® Stripettor™ Ultra Pipette Controller



Featuring conveniently positioned switches change operating modes and speeds and a LCD display for continuous visualisation of speed, modes, and battery status. Supplied with with universal power supply, 3 x 0.2µm filters, 3 x coloured nose pieces and wall hanger.



Code	Offer Price, €	Offer Price, £
B2B06430	168.00	140.00



## SLS Select PES Syringe Filters



The highly asymmetrical pore structure of PES membranes offers an excellent loading capacity and high flow rate for these naturally hydrophilic syringe filters. Moulded in a polypropylene shelter.

- Diameter: 25mm
- Sterile
- Recommended for preparation of protein samples, ultra-fast filtration of tissue culture media

**Supplied in packs of 50, individually wrapped**

**69%  
OFF**



Code	Pore Size, $\mu\text{m}$	Offer Price, €	Offer Price, £
<b>B2B06412</b>	0.22	24.00	20.00
<b>B2B06414</b>	0.45	24.00	20.00

HygienePak



### HygienePak

2 x 3-ply face masks (type IIR), 2 x 1.5mL 70% alcohol gel sachets, 3 x anti-bacterial wipe sachets.

Code	List Price, €	List Price, £
<b>COV1128</b>	1.29	0.99

## SLS Select Qualitative Filter Paper Discs, Grade A



The most widely used general purpose filter paper for general applications in laboratory analysis and liquid clarification. Medium filtration velocity and retention.

- Whatman Grade 1 equivalent
- 160 $\mu\text{m}$  thickness
- 5 - 13 $\mu\text{m}$  nominal retention

**Supplied in packs of 100**

**50%  
OFF**



Code	$\varnothing$ , mm	Offer Price, €	Offer Price, £
<b>B2B06206</b>	55	2.40	2.00
<b>B2B06208</b>	70	2.64	2.20
<b>B2B06210</b>	90	3.06	2.55
<b>B2B06212</b>	110	3.60	3.00
<b>B2B06214</b>	125	3.72	3.10
<b>B2B06216</b>	150	5.28	4.40
<b>B2B06218</b>	185	7.86	6.55
<b>B2B06220</b>	240	12.72	10.60



# SLS Lab Basics my-FUGE 12 Place Centrifuge

2 YEARS



Eliminate the need to change rotors when switching between microtubes and PCR strips with the unique COMBI-Rotor™ (included) allowing the running of 12 x 1.5/2.0mL microtubes and 4 PCR strips simultaneously. With a fixed speed that produces 2000xg, this centrifuge is perfect for quick spin downs.

- Twice the capacity of most mini centrifuges
- Near silent operation
- Starts and stops with closing/opening of the lid
- Conserves valuable bench space

50% OFF



Code	Max Speed, RPM	Max RCF, g	Dims, w x d x h, mm	Offer Price, €	Offer Price, £
B2B7092	5500	2000	146 x 203 x 108	283.00	236.00

# SLS Lab Basics Mini Centrifuge

2 YEARS



Ideal for microfiltration and quick spin downs from the walls and caps of microcentrifuge tubes. The compact design saves bench space and features an easy-open clear lid. Simply close the lid for acceleration and open the lid for deceleration, or alternatively use the on/off switch to control.

- Easy-to-use with dual start/stop function
- Compact design
- Whisper quiet operation
- Ideal for quick spin downs of microtubes and PCR tubes
- Universal voltage
- Rotor change without tools
- Accelerates and brakes in seconds
- Supplied with 8 place 1.5/2.0mL microtube rotor and 16 place (2 x 8 strips) PCR rotor

46% OFF



Code	Max Speed, RPM	Max RCF, g	Dims, w x d x h, mm	Offer Price, €	Offer Price, £
B2B06202	7000	2680	160 x 170 x 122	107.00	89.00



## SLS Lab Basics 12 Place Microcentrifuge

2 YEARS



Compact and powerful high-speed centrifuge, ideal for research applications including sedimentation of cells and viruses and isolation of macromolecules such as DNA, RNA, proteins or lipids. It consists of a large LCD display which provides all visual information and a unique cooling design which minimises rotor heating.

- Whisper quiet operation - less than 49dB
- Automatic door lock
- Automatic internal diagnosis
- Polypropylene rotor is fully autoclavable
- Run time: 30 sec - 99 min
- Pulse operation for quick spins
- Sound-alert function
- Over-temperature and over-speed detector
- Supplied with 12 position 1.5/2.0mL microtube rotor



Code	Max Speed, RPM	Max RCF, g	Dims, w x d x h, mm	Offer Price, €	Offer Price, £
B2B06204	15000	15100	245 x 255 x 140	588.00	490.00

## SLS Flowgen Plate Spinner

2 YEARS



Rapidly spin down droplets in PCR or microplates to improve PCR yields or give more consistent assay results. The swing out rotor has two plate carriers that rest at a 75° angle. This allows plates to be inserted confidently without sealing tapes or caps. Most samples can be spun down in less than 20 seconds. To end a run, simply open the lid and the automatic, electric brake brings the rotor to a quick, smooth stop in just 4 seconds.

- Unique swing-out rotor design prevents spillage
- Accepts most types of PCR plates
- Capacity: 2 x PCR plates (when stacking skirted PCR plates, max. capacity is 4 plates); 2 x microplates
- Remarkably small footprint



Code	Max Speed, RPM	Max Speed, x g	Dims, w x d x h, mm	Offer Price, €	Offer Price, £
B2B06236	2550	600	230 x 260 x 197	498.00	415.00



# OHAUS Frontier™ FC5706 Multi Centrifuge

2 YEARS



Reliable compact low-speed general purpose centrifuges. The standard rotor options can process both round and conical bottom tubes (including common blood tubes), and can also be adapted easily with accessories to process smaller tubes.

- Intuitive interface
- Compact profile helps to save valuable bench space in labs
- Easy installation design
- Brushless quiet motor
- Timer: 10s to 99h 59m 59s; continuous
- 2 line backlit LCD display
- Dims, w x d x h: 291 x 392 x 266mm
- Max speed: 6000rpm/4427rcf



30% OFF

Code	Description	Offer Price, €	Offer Price, £
B2B7206	FC5706 Frontier™ multi centrifuge	962.00	802.00
B2B7208	FC5706 Frontier™ multi centrifuge with rotor angle 12 x 15mL (for round/conical bottom tubes)	1084.00	903.00
B2B7210	Rotor angle 6 x 50mL (for round/conical bottom tubes)	406.00	338.00

# Corning® LSE Mini Microcentrifuge

2 YEARS



A compact, lightweight and easy-to-use centrifuge. It includes an 8-place rotor that will accept standard 1.5 to 2.0mL microcentrifuge tubes with adapters for 0.5/0.4mL and 0.2mL tubes, and a 4 place rotor for PCR strip tubes.

- Close the lid to start, press the lid release button to stop
- Quick release rotor system eliminates the need for tools to exchange rotors
- Electronic braking provides rapid deceleration for more efficient sample prep
- Compact, rugged design withstands heavy use in crowded lab environment
- Dual lid switch provides safe operation
- Ergonomic design allows for comfortable handling



29% OFF

Code	Max Speed, RPM	Max RCF, g	Dims, w x d x h, mm	Offer Price, €	Offer Price, £
B2B7112	6000	2000	148 x 174 x 122	167.00	139.00



## SLS Flowgen 3D MiniMixer

2 YEARS



Multi-functional shaker which provides a 3-dimensional “nutating” motion for thorough, foam-free mixing in blood and centrifuge tubes, as well as in a variety of flat vessels. Feature maintenance free, brushless motors capable of loads up to 2kg and are safe for use in cold rooms and incubators.

- Includes dimpled mat; ideal for mixing in blood & centrifuge tubes
- Optional flat mats are also available for mixing other vessel types
- Stacking platforms sold separately, effectively doubling the usable surface area
- Tri-directional motion for thorough, uniform mixing



35%  
OFF

Code	Speed, RPM	Tilt Angle, °	Platform Dims, mm	Dims, w x d x h, mm	Offer Price, €	Offer Price, £
<b>B2B7082</b>	24 (fixed)	20	270 x 190	270 x 190 x 200	<b>311.00</b>	<b>259.00</b>

## SLS Flowgen 2D BenchRocker

2 YEARS



Designed to provide the precise speeds and tilt angles required for a broad range of molecular and biological mixing applications. The user can adjust both parameters to match the vessel size and the volume of liquid being mixed, yielding optimum results. Provides a gentle wave effect for non-foaming mixing, as is required for most blot washing and gel work. When set to higher speeds and more extreme tilt angles, they produce aggressive agitation for vigorous sample mixing.

- Accepts stackable platforms (clearance = 70mm)
- Adjustable speed and tilt for a wide range of applications
- Dual platform accessory doubles work surface
- Cold room and incubator safe



35%  
OFF

Code	Speed Range, RPM	Tilt Angle, °	Platform Dims, mm	Dims, w x d x h, mm	Offer Price, €	Offer Price, £
<b>B2B7080</b>	2 - 30	0 - 30	350 x 300	350 x 300 x 200	<b>584.00</b>	<b>487.00</b>



# SLS Lab Basics Vortex Mixer

2 YEARS



Compact and stable design with electronic speed control ensures the same speed is maintained at all times, even during changes of load and also features continuous or touch operation. The orbital diameter of 4mm provides effective and efficient mixing inside the sample.

- Quiet and compact stable design
- Continuous or touch operation
- Electronic speed control for constant speed even during changes in load
- Aluminium cast base with silicone feet for excellent stability and vibration damping



Code	Speed Range, RPM	Dims, w x d x h, mm	Weight, kg	Offer Price, €	Offer Price, £
B2B06222	0 - 2500	127 x 160 x 130	3.5	120.00	100.00

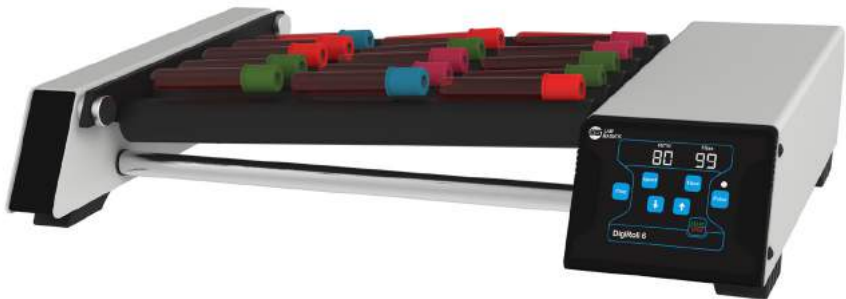
# SLS Lab Basics DigiRoll 6 Tube Roller

2 YEARS



6 tube roller providing a rocking and rolling motion for optimum mixing of viscous samples. Equipped with a powerful brushless DC motor for maintenance free long life and quiet operation. Microprocessor controller gives accurate speed under variable load, and the programming feature means the user can save and run up to 9 user defined programs.

- Digital display with soft touch keypad
- IP 21 protection class
- Timer from 1 min to 99 min and infinite mode
- User can set pulse time from 30 to 99 seconds
- Adjustable rollers spacing to hold different diameter tubes
- Stackable design with robust construction



Code	Capacity	Speed Range, RPM	Tilt Angle, °	Dims, w x d x h, mm	Offer Price, €	Offer Price, £
B2B06224	15 x 3/4mL tubes	10 - 80	±3	502 x 301 x 93	360.00	300.00



# SLS Lab Basics Digital Orbital Shaker

NEW 5 YEARS



A dependable and versatile shaker for a vast range of protocols. Create your own matrix for vessels of all shapes and sizes with hi-lo platform and bungee cords. Instantly adjusts to weight load changes and unbalanced loads with no-stop electronic motor feedback allowing for truly reproducible results.

- Durable ABS construction suitable for use in incubators (excluding CO<sub>2</sub>) and cold rooms within 2 to 40°C; 20 to 80% RH, non-condensing
- Run time: 0 to 74 hours and 59 minutes, 1 second increments or continuous
- Soft start and shut down feature reduces spilling from full vessels
- Designed to handle heavy loads up to 4.5kg
- Overload protection shut-off prevents overloading
- Supplied with skid-free rubber platform mat, 8 x bungee cords, universal hi-lo platform with soft rubber edge bumpers, power adapter (110–240VAC, 50/60 Hz) with 4 interchangeable plug types

33%  
OFF



Code	Orbit, mm	Speed Range, RPM	Platform Dims, mm	Dims, l x w x h, mm	Offer Price, €	Offer Price, £
B2B7300	19	20 - 300	279 x 279	314 x 197 x 314	600.00	500.00

# Grant PMS-1000i Microplate Shaker

2 YEARS



Microplate shaker providing reliable, regulated shaking for two or four microplates. With a speed range of 150 to 1000rpm, the PMS-1000i can be adjusted to suit the application – gentle shaking to ensure that the well contents are not ejected, or more vigorous agitation for effective aeration across the small surface area of each of the wells.

- Direct drive mechanism and brushless motor
- Set and display the speed
- Quick and easy screw fitting of any standard-depth 96- or 384-well plate
- Continuous or timed operation, with automatic switch off
- Easy-to-use integral electronic timer
- Quick and easy to use screw fittings keep the plates securely in position
- Easy to read LED display clearly indicates time and speed
- Simple graduated dial to adjust the speed to suit the application
- Comes with FREE platform for 4 plates worth £47/€61!



15%  
OFF

Plus FREE platform - Savings of £110/€178!

Code	Speed Range, RPM	Orbit, mm	Dims, w x d x h, mm	Offer Price, €	Offer Price, £
B2B7138	150 - 1200	2	220 x 205 x 90	426.00	355.00



## SLS Lab Basics Hotplate Stirrer, 280°C



Stainless steel stirrer with a ceramic coated hotplate which resists corrosion. Features a digital control system, ideal for use in physics, chemistry and biotech labs.

- Heating temperature up to 280°C
- LED display shows temperature and speed
- 50°C HOT warning indicates residual hotplate temperature
- ABS chemical resistant casing
- Includes FREE external temperature sensor PT1000 and support clamp



Code	Stirring Capacity, L	Speed Range, RPM	Max Temp, °C	Plate Ø, mm	Offer Price, €	Offer Price, £
B2B06238	3	100 - 1500	280	135	234.00	195.00

## SLS Lab Basics Hotplate Stirrer, 340°C



Stirrer hotplate with ceramic coated stainless steel plate, widely used in chemical synthesis, physical and chemical analysis, bio-tech labs.

- Simple running interface easy to use and program, automatically identifies temperature sensor PT1000 and transfers to PT1000 operation mode
- LCD display shows target and actual temperatures, as well as set and actual speed
- Brushless DC motor - maintenance free and explosion-proof
- Fully closed assembly guarantees safety and long service life, effectively prevents the liquid damage
- HOT warning indicates residual hotplate temperature
- Includes FREE external temperature sensor PT1000 and support clamp



Code	Stirring Capacity, L	Speed Range, RPM	Max Temp, °C	Plate Ø, mm	Offer Price, €	Offer Price, £
B2B06240	20	100 - 1500	340	135	384.00	320.00



# OHAUS Guardian 5000 Hotplate Stirrers

2 YEARS



Ensure consistent stirring performance and temperature control. With the LCD display, and chemical resistant SmartHousing™ that is easy to clean and remains cool to the touch. SafetyHeat™ protects the lab with its early detection system to continuously monitor the electronics and shut off heating before an over temperature condition occurs.

- LCD display
- Audible alarm
- Green indicator lights for heating/stirring
- Speed range: 60 - 1600rpm
- Temperature range: +5 to 500°C



Code	Function	Capacity, L	Plate Dims, mm	Plate Material	Offer Price, €	Offer Price, £
B2B7196	Hotplate	15	178 x 178	Ceramic	263.00	219.00
B2B7198	Stirrer	15	178 x 178	Ceramic	263.00	219.00
B2B7200	Hotplate stirrer	15	178 x 178	Ceramic	335.00	279.00
B2B7202	Hotplate stirrer	18	254 x 254	Ceramic	475.00	396.00
B2B7204	Hotplate stirrer	20	Ø 135	Aluminium	335.00	279.00

# SLS Flowgen Mini Digital Dry Bath

2 YEARS



With its compact construction, broad temperature range, and multiple block options, the digital mini block is the perfect tool for laboratory incubations. The simple touch pad controls and a digital display provide for “set and walk away” temperature selection and unrivalled accuracy.

- Exchangeable blocks for 0.2 to 50mL tubes (sold separately)
- Clear cover ensures temperature uniformity
- Simple touchpad, digital control
- Supplied with block lifter



Code	Temp Range, °C	Accuracy, °C	Dims, w x d x h, mm	Offer Price, €	Offer Price, £
B2B7086	Ambient +5 - 100	±0.5	105 x 150 x 115	214.00	178.00



# SLS Flowgen Digital Dry Baths

2 YEARS



Digital dry baths with accurate “set and walk away” digital temperature selection, eliminating the need for external thermometers and repetitive “fine tuning” of a temperature control knob. Simply enter the desired temperature on the digital touchpad and the dry bath provides accurate temperature with real time monitoring that continuously maintains the selected temperature.

- Assorted blocks for a wide variety of tube sizes (sold separately)
- Include an easy to use block lifter with a temperature insulated handle
- Built-in user re-calibration function, to guarantee long term temperature accuracy
- Temperature range: ambient +5 to 150°C
- Temperature accuracy:  $\pm 0.2^{\circ}\text{C}$ , increments:  $0.1^{\circ}\text{C}$ , uniformity:  $\pm 0.2^{\circ}\text{C}$
- Digital timer is built into the touchpad display (1 to 999 minutes)

35% OFF



Code	No. Block Positions	Dims, w x d x h, mm	Offer Price, €	Offer Price, £
B2B7088	1	200 x 230 x 80	343.00	286.00
B2B7090	2	220 x 260 x 80	428.00	357.00

# SLS Lab Pro Safevac Aspiration System

2 YEARS



- Designed for laboratory waste recovery and separation of liquid and solid
- Vacuum power can be set to different levels to achieve 1 - 15mL/s aspirating speed
- Sensitive level sensor to prevent liquid overflow during operation
- Waste bottle, tubing and handle are fully autoclavable
- Wide range of adapters to fit tubes and microplates

50% OFF



Code	Vacuum Range, mbar	Vacuum Speed, mL/S	Volume, L	Dims, w x d x h, mm	Offer Price, €	Offer Price, £
B2B06242	0 - 600	1 - 15	4	180 x 240 x 450	720.00	600.00



## SLS Flowgen MultiSUB Horizontal Electrophoresis Tanks

2 YEARS



**MultiSUB Midi** has been designed for routine horizontal gel electrophoresis. This unit is ideal for those routinely checking medium numbers of samples over short to medium gel run lengths. Loading guides allow easy well identification and sample loading. Complete with 2 x 16 sample combs, loading guides and dams.

**MultiSUB Choice** offers a wide degree of versatility. Three tray options are available allowing the choice of one, two or all three gel length options. Maximising comb and tray options allow up to 210 samples to be resolved per gel. The 15cm total run length allows restriction fragment or other close MW sample bands to be easily separated and identified. Supplied with 2 x 20 sample combs, loading guides and dams.



Code	Description	Gel Dims, w x l, mm	Sample Capacity	Buffer Volume, mL	Offer Price, €	Offer Price, £
<b>B2B06228</b>	Midi	100 x 100	100	300	250.00	208.00
<b>B2B06230</b>	Choice	150 x 70, 150 x 100, 150 x 150	210	500	308.00	257.00

## SLS Flowgen OmniPAGE Mini Vertical Electrophoresis Systems

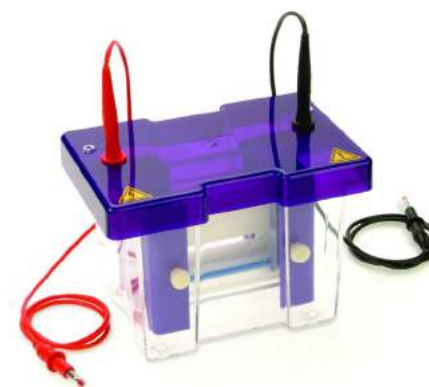
2 YEARS



Simple, versatile vertical mini gel electrophoresis, combining both functionality and ease of use. The OmniPAGE mini is a high quality, low cost product with unsurpassed finish, durability and strength. It features injection moulded construction for leak proof running, and a simple clamp system to ensure a tight seal between buffer chambers to prevent current leakage.

**OmniPAGE Mini system** is supplied with glass plates with bonded 1mm thick spacers, 2 x 12 sample combs, cooling pack, blanking plate and casting base.

**OmniPAGE Mini PAGE and blotting package** is supplied with PAGE insert, 2 x 2mm thick notched glass plates, 2 x 2mm thick plain glass plates with 1mm thick bonded spacers, 1x dummy plate, 2 x combs (1mm thick 12 samples), 1 x casting base, silicone mat, cooling pack, standard electroblotting module (includes mini platinum wire, blotting insert, 4x 10 x 10cm compression cassettes and 16 x fibre pads).



Code	Description	Offer Price, €	Offer Price, £
<b>B2B06232</b>	OmniPAGE Mini PAGE and blotting package	663.00	553.00
<b>B2B06234</b>	OmniPAGE Mini system with castor	449.00	374.00



# SLS Flowgen Electrophoresis Power Supplies

2 YEARS



**NanoPAC** is an ultra-compact and economical unit, featuring a simple two step feature to set a programmable change in voltage/current/time during the run to provide increased versatility. The user-friendly interface has a conspicuous 3-digit LED, and is easily adjustable in 1V and 1mA increments, making it perfect for separations where precise settings are required.

**PowerPro** is a versatile multi-function power supply suitable for a wide range of electrophoresis applications, with nearly twice the current and power of the market leading equivalent unit. Featuring both built-in pre-set and customisable protocols; a 2.4" TFT-LCD screen displays the current running parameters and allows the user to browse pre-set and saved protocols. The convenient pause/resume key allows any run to be temporarily halted for inspection of the gel and restarted from the same position.



Code	Description	Max Current, mA	Max Power, W	Max Voltage, V	Output Pairs	Offer Price, €	Offer Price, £
B2B06632	NanoPAC	400	60	300	2	319.00	266.00
B2B06634	PowerPRO	700	150	300	5	366.00	305.00

# Lonza FlashGel™

Lonza

The FlashGel™ system for fast electrophoresis of DNA is the ideal tool for quick screening of up to 32 samples without having to plan your day around agarose gels. Contains all you need to quickly begin using FlashGel™ cassettes. The FlashGel™ system is the fastest way to separate DNA and the best way to watch DNA migration as it happens. This revolutionary new tool separates DNA in 2 - 7 minutes. Monitor gel runs right at the bench, without UV light. The highly sensitive system allows a 5-20x reduction in DNA levels - saving both time and money. FlashGel™ cassettes contain precast, prestained agarose gels and buffer - no need for gel preparation, buffer addition or gel staining.

- 5 minute separation and recovery, See bands in as little as 2 minutes
- Recover samples directly without UV light band excision or purification
- Real-time separation and documentation
- Watch band migration as it happens without DNA damaging UV light
- Outstanding sensitivity and resolution



Code	Description	Contains	Offer Price, €	Offer Price, £
B2B06862	Device pack	Dock, camera, power supply	2034.00	1695.00
B2B7024	Starter pack	Dock, cassettes (1.2% 12+1 single-tier, 9 pack), loading dye, marker (100 - 4000bp)	802.00	668.00
B2B7026	DNA kit	Cassettes (1.2% 12+1 single tier, 9 pack), loading dye, marker (100 - 4000bp)	502.00	418.00



## Meridian Bioscience HyperLadder™ Markers

meridian BIOSCIENCE™  
LIFE RECOVERED. LIFE IMPROVED.

Molecular weight markers composed of a restriction digest plus one or more PCR products, especially designed for easy size determination of linear double-stranded DNA fragments on 1% to 2% TAE or TBE agarose gels. The ready-to-use format reduces handling steps and saves time.

- Broad size range
- Easy to orientate - several brighter reference bands
- Stable
- Supplied with a 5x loading dye for loading of sample DNA



Code	Description	Size	Offer Price, €	Offer Price, £
<b>B2B7022</b>	HyperLadder™ 25bp - 12 bands from 25bp to 500bp	100 lanes	65.00	54.00
<b>B2B7008</b>	HyperLadder™ 25bp - 12 bands from 25bp to 500bp	200 lanes	109.00	91.00
<b>B2B7010</b>	HyperLadder™ 25bp - 12 bands from 25bp to 500bp	500 lanes	241.00	201.00
<b>B2B7018</b>	HyperLadder™ 50bp - 15 bands from 50bp to 2000bp	100 lanes	60.00	50.00
<b>B2B7012</b>	HyperLadder™ 50bp - 15 bands from 50bp to 2000bp	200 lanes	102.00	85.00
<b>B2B7014</b>	HyperLadder™ 50bp - 15 bands from 50bp to 2000bp	500 lanes	228.00	190.00
<b>B2B7020</b>	HyperLadder™ 100bp - 10 bands from 100bp to 1kb	100 lanes	50.00	41.70
<b>B2B7004</b>	HyperLadder™ 100bp - 10 bands from 100bp to 1kb	200 lanes	96.00	80.00
<b>B2B7006</b>	HyperLadder™ 100bp - 10 bands from 100bp to 1kb	500 lanes	215.00	179.00
<b>B2B7016</b>	HyperLadder™ 1kb - 14 bands from 200bp to 10kb	100 lanes	43.90	36.60
<b>B2B7000</b>	HyperLadder™ 1kb - 14 bands from 200bp to 10kb	200 lanes	65.00	54.00
<b>B2B7002</b>	HyperLadder™ 1kb - 14 bands from 200bp to 10kb	500 lanes	115.00	96.00

## National Diagnostics ProtoGel

national diagnostics

Forms an electrophoresis matrix that is ideal for the separation of proteins and polypeptides. Stabilised, ready-to-use, acrylamide/methylene bisacrylamide solution (37.5:1 ratio), with zero acrylic acid content and oxidation products such as aldehydes.



Code	Description	Pack	Offer Price, €	Offer Price, £
<b>B2B7032</b>	Protogel 30% solution	1L	55.00	45.50
<b>B2B7034</b>	Protogel 40% solution	1L	96.00	80.00

## National Diagnostics SequaGel Accugel

national diagnostics

Stabilised, ready-to-use solution of 40% (w/v) premixed acrylamide: bisacrylamide solution.

Zero acrylic acid content, and oxidation products such as aldehydes have been removed. Formulated with 18 MegOhm water, 0.2 Micron filtration.



Code	Description	Pack	Offer Price, €	Offer Price, £
<b>B2B7036</b>	19:1 monomer solution (40%)	1L	72.00	60.00
<b>B2B7038</b>	29:1 monomer solution (40%)	1L	66.00	55.00



## Jenway 7315 Spectrophotometer

3 YEARS

Jenway®

Spectrophotometer with icon driven software and easy and intuitive navigation system. Features measurement modes for absorbance, % transmittance, concentration, spectrum scanning, kinetics and quantitation, and an easy access USB port on the front of the unit which enables results to be stored directly to a USB memory stick for easy transfer of data. Can also store up to 240 methods which can be copied from one unit to another using the USB capability. Enhanced security features enabling the settings and methods to be locked preventing unauthorised changes to the instrument settings and method parameters.

- Icon driven software
- Results and method saving to USB memory stick
- Autologging capabilities
- Press to read xenon lamp
- Fitted with 10x10mm cuvette holder, supplied with 100 disposable cuvettes, instruction manual, universal power supply, USB memory stick, PC software on CD ROM and interface cable



Code	Wavelength Range, nm	Wavelength Accuracy, nm	Bandwidth, nm	Dims, w x d x h, mm	Offer Price, €	Offer Price, £
<b>B2B7106</b>	198 - 1000	±2	5	275 x 400 x 220	<b>3523.00</b>	<b>2936.00</b>

## Jenway 6850 Spectrophotometer

1 YEAR

Jenway®

Double beam spectrophotometer with a variable spectral bandwidth. The highly stable optics and two detectors measure the sample and reference simultaneously optimising measurement accuracy. Measurement modes for photometrics, concentration, multi-wavelength, spectrum scanning, kinetics, quantitation, DNA/RNA and protein analysis. Includes Jenway Prism PC software, offering additional functionality with preloaded methods for DNA/RNA and protein analysis, extensive post-measurement tools, unlimited results saving and easy export of data.

- Variable spectral bandwidth  
0.5, 1, 2, 4, 5nm
- Integrated user interface
- USB port for data storage
- Conforms to European Pharmacopeia requirements
- Supplied fitted with single 10x10mm cuvette holder in sample and reference position, instruction manual, power cables, PC software on CD ROM with USB connection cable and dongle, 4GB USB memory stick, 2 x quartz cuvettes, 4 x glass cuvettes, dust cover and 230V power supply



Code	Wavelength Range, nm	Wavelength Accuracy, nm	Bandwidth, nm	Dims, w x d x h, mm	Offer Price, €	Offer Price, £
<b>B2B7102</b>	190 to 1100	±0.3 (at 0.5 and 1nm), ±0.5 (at 2, 4 and 5nm)	Variable 0.5, 1, 2, 4, 5	600 x 450 x 200	<b>7025.00</b>	<b>5854.00</b>



NEW

Cole-Parmer®  
stuart™

antylia  
SCIENTIFIC

# The Best In Class

Cole-Parmer® Stuart™ Undergrad Hotplate



The re-designed Cole-Parmer® Stuart™ Undergrad hotplates include Analogue and Digital hotplates, stirrers, and hotplate stirrers - available in a choice of metal coated or ceramic tops. All hotplates are completely glazed with BioCote® treatment for antimicrobial protection.



## Mettler Toledo FiveEasy™ Benchtop Meters

1  
YEAR



Ideally suited for applications in the laboratory, the FiveEasy™ and FiveEasy™ Plus benchtop instruments provide high quality pH/mV or conductivity measurements with the simple click of a button. Compact in design, and featuring various data export opportunities, the FiveEasy™ series instruments are the perfect companion to get reliable measurement data, all at a reasonable price.

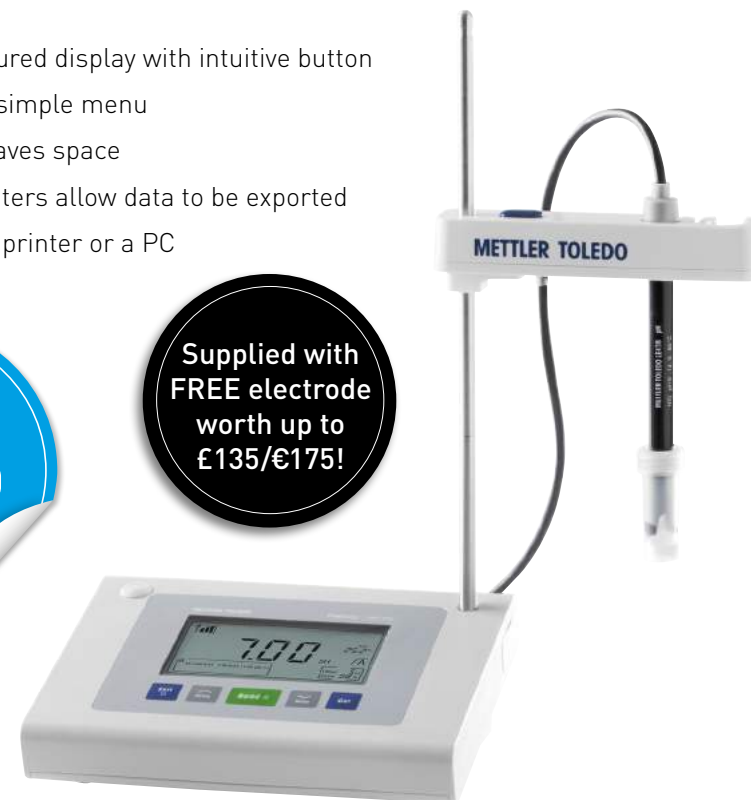
	FiveEasy™ F20 pH/mV	FiveEasy Plus™ FP20 pH/mV	FiveEasy™ F30 Conductivity	FiveEasy Plus™ FP30 Conductivity
<b>Measuring Range</b>	0 to 14pH -2000 to 2000mV 0 to 100°C	-2 to 16 pH -2000 to 2000mV -5 to 105°C	0.00 to 200mS/ cm 0.00 to 200g/L 0.0 to 100°C	0.01 to 500mS/ cm 0.00 to 300g/L 0.00 to 42psu -5 to 105°C
<b>Accuracy</b>	±0.01pH ±1mV ±0.5°C	±0.01pH ±1mV ±0.3°C	±0.5% of the measured value ±0.5°C	±0.5% of the measured value ±0.3°C
<b>Calibration</b>	Max. 3 points	Max. 5 points	1 point	1 point

Code	Meter Model	Description	Free Electrode	Offer Price, €	Offer Price, £
<b>B2B7234</b>	FiveEasy F20 pH/mV	Standard kit	LE438 electrode	<b>432.00</b>	<b>360.00</b>
<b>B2B7236</b>	FiveEasy Plus FP20 pH/mV	Standard kit	LE438 electrode	<b>596.00</b>	<b>497.00</b>
<b>B2B7238</b>	FiveEasy Plus FP20 pH/mV	Bio kit	LE410 electrode	<b>596.00</b>	<b>497.00</b>
<b>B2B7240</b>	FiveEasy Plus FP20 pH/mV	Micro kit	LE422 electrode	<b>596.00</b>	<b>497.00</b>
<b>B2B7242</b>	FiveEasy Plus FP20 pH/mV	Tris kit	LE420 electrode	<b>596.00</b>	<b>497.00</b>
<b>B2B7244</b>	FiveEasy F30 conductivity	Standard kit	LE703 electrode	<b>745.00</b>	<b>621.00</b>
<b>B2B7246</b>	FiveEasy Plus FP30 conductivity	Standard kit	LE703 electrode	<b>868.00</b>	<b>723.00</b>

- Large, well-structured display with intuitive button arrangement and simple menu
- Compact design saves space
- FiveEasy™ Plus meters allow data to be exported either directly to a printer or a PC

UP TO  
**24%  
OFF**

Supplied with  
**FREE electrode**  
worth up to  
**£135/€175!**



### SLS Select pH Buffer Solutions



NIST Traceable

Code	Description	Colour Code	Pack	Offer Price, €	Offer Price, £
<b>F152000</b>	Buffer solution pH 4	Red	500mL	<b>4.79</b>	<b>3.99</b>
<b>F151668</b>	Buffer solution pH 4	Red	1L	<b>7.19</b>	<b>5.99</b>
<b>F152002</b>	Buffer solution pH 7	Yellow	500mL	<b>4.79</b>	<b>3.99</b>
<b>F151671</b>	Buffer solution pH 7	Yellow	1L	<b>7.19</b>	<b>5.99</b>
<b>F152004</b>	Buffer solution pH 10	Blue	500mL	<b>4.79</b>	<b>3.99</b>
<b>F151674</b>	Buffer solution pH 10	Blue	1L	<b>7.19</b>	<b>5.99</b>



## Spend & Save



SOLVENTS & REAGENTS



ACIDS & BASES



INORGANIC COMPOUNDS  
& SALTS



REFERENCE STANDARDS

On Honeywell products\*

Place your order on the **Analab** website  
and quote 'HONEY30' to receive

# 30% off

\*Offer excludes all Hydranal products



## ExitusPlus™ Decontamination Solutions

Eliminate DNA/RNA or RNase contamination in your lab

Removes RNA

Removes DNA

Removes RNases

Non-toxic

Not harmful

Non-corrosive

Effective decontamination

10 min  
Fast

Easy-to-use

**READY TO USE**

**30% OFF**

Enabling trueness and reliability for your COVID-19 / PCR analysis

Supplied in 500mL spray bottles

Code	Description	For	Offer Price, €	Offer Price, £
B2B7372	DNA-ExitusPlus™ indicator free	DNA/RNA decontamination	67.00	56.00
B2B7374	RNase-ExitusPlus™	RNase decontamination	67.00	56.00



# Corning® 3D Clear Tissue Clearing Reagent



Designed specifically to support imaging for 3D cell culture models and plate-based high-throughput processing. When paired with fluorescent labelling (e.g. fluorescent protein, immunofluorescence, chemical dyes) and high content confocal microscopy, it allows for complete 3D cell culture model characterisation and more accurate drug screening.

- Rapid tissue clearing
- Easy to use
- No special equipment required
- Compatible with IF, FP and other fluorescent labels
- Microplate and automation compatible
- Reversible to follow up with 2D H&E/IHC



Code	Pack	Offer Price, €	Offer Price, £
B2B7114	10mL	144.00	120.00
B2B7116	30mL	355.00	296.00
B2B7118	100mL	972.00	810.00

# First Aid Offers

See our website for product details and full list of contents.



Code	Description	Offer Price, €	Offer Price, £
B2B7050	Redcap™ eye wash and skin flush kit for acid/alkali splashes in aura box	38.40	32.00
B2B7052	Burns first aid kit in aura box	31.90	26.60
B2B7054	Hydrofluoric acid treatment kit in aura box	15.90	13.25
B2B7056	Dependaplast pilfer proof plaster dispenser	17.42	14.52
B2B7058	BS8599-1 workplace first aid kit in aura box - small	20.20	16.80
B2B7060	BS8599-1 workplace first aid kit in aura box - medium	29.90	24.90
B2B7062	BS8599-1 workplace first aid kit in aura box - large	38.30	31.90
B2B7064	Biohazard clean-up kit in aura box - 5 applications	14.92	12.43
B2B7066	Eye wash point with mirror	13.46	11.22
B2B7068	Deluxe eye wash station in aura box	20.90	17.43
B2B7070	Mediana A15 HeartOn automated external defibrillator	1548.00	1290.00



## SLS Lab Basics Inverso TC100 Inverted Microscopes

1  
YEAR



Ideal for the typical working laboratory and is built to a high-quality specification. It is robust enough to withstand the rigours of constant daily use and with a quintuple position nose-piece fitted as standard, it is ideally suited for multiple observation techniques and/or magnifications.

- Trinocular head inclined at 45°
- Eyepieces: 10/20mm wide field
- Objectives: 4X, 40X plan-achromatic LWD/10X, 20X, 40X Phase Contrast
- Condenser: NA 0.3 (removable), working distance 72mm
- Stage: 160 x 250mm with additional mechanical stage (2 interchangeable stage plates) stage extending board
- Focusing: coaxial coarse and fine
- Illumination: 3W LED
- Epi fluorescence module adds blue excitation (460-490nm) and green excitation (480-550nm)

UP TO  
**40%  
OFF**



Code	Description	Offer Price, €	Offer Price, £
<b>B2B06416</b>	With mechanical stage LED	2400.00	2000.00
<b>B2B06418</b>	With epi fluorescence module	8880.00	7400.00

## SLS Lab Basics Tablet Microscope Camera



Tablet camera designed for microscopy applications with a high-definition 9.7" colour LCD touchscreen. Equipped with software that allows the user to preview an image, set the white balance, capture images and videos as well as having measurement and annotation capabilities.

- Crystal display, RK3066 dual-core 1.5Hz CPU
- Touch-screen operation, can be used as a small computer
- Includes Wi-Fi and Bluetooth wireless networking for easy file, HDMI output

**32%  
OFF**

Supplied with FREE  
C-mount adapter  
for SLS Lab  
Basics Inverso  
microscopes, worth  
£145/€174!



Code	Camera	Offer Price, €	Offer Price, £
<b>B2B06420</b>	15fps at 1024 x 768; 1/2.5 (4:3) 5mpx CMOS	780.00	650.00



### SLS Select Lens Cleaning Tissue

Ideal solution for cleaning lenses and other optical surfaces made from glass, quartz or plastic.

**Supplied in packs of 50**

Code	Dims, mm	Offer Price, €	Offer Price, £
<b>B2B06248</b>	80 x 100	2.40	2.00

**59%  
OFF**



# SLS Lab Basics Compact Precision Balances

5 YEARS



- Accurate, high quality, attractive, and stackable units
- Perfect for applications where portability or easy storage are paramount
- External calibration
- Supports multiple weighing units like counting, % weighing
- Hygienic and rustproof stainless steel pan
- Security slot at the back for wire-locking to prevent theft
- Power supply: AC adaptor or 4 AA size dry batteries (batteries not included)

46% OFF



Code	Capacity, g	Readability, g	Offer Price, €	Offer Price, £
B2B06024	310	0.01	168.00	140.00
B2B06026	3100	0.1	168.00	140.00

# SLS Lab Pro P-Series Precision Balances

5 YEARS



- One touch automatic calibration
- Compact, B5 size footprint
- Fast, 1 second stabilisation
- Large bright vacuum fluorescent display
- Shock absorber function
- Multiple weighing units
- GLP/GMP/GCP/ISO compliant
- Statistical calculation function
- ACAI – Automatic Counting Accuracy Improvement
- Dims, w x d x h: 193 x 262.5 x 85.5mm

50% OFF



Code	Capacity, g	Readability, g	Plate Ø, mm	Offer Price, €	Offer Price, £
B2B06114	122	0.001	130	514.00	428.00
B2B06116	220	0.001	130	529.00	441.00
B2B06254	320	0.001	130	548.00	457.00
B2B06118	520	0.001	130	628.00	523.00
B2B06120	1220	0.01	150	514.00	428.00
B2B06122	2200	0.01	150	529.00	441.00
B2B06256	3200	0.01	150	548.00	457.00
B2B06290	5200	0.01	150	628.00	523.00



## SLS Lab Pro A-Series Analytical Balances

5 YEARS



- Compact footprint
- Breeze break with rotary doors that slide behind the balance and can be removed with one touch
- Ideal for applications where space is at a premium
- Reverse backlit LCD display for easy to read weighing results
- Statistical calculation function eliminates the need for a stats printer
- Standard RS-232C
- Fast, compact SHS sensor, response time ~2 seconds



Code	Capacity, g	Readability, mg	Calibration	Offer Price, €	Offer Price, £
<b>B2B06106</b>	102	0.1	External	<b>617.00</b>	<b>514.00</b>
<b>B2B06250</b>	102	0.1	Internal	<b>749.00</b>	<b>624.00</b>
<b>B2B06108</b>	152	0.1	External	<b>672.00</b>	<b>560.00</b>
<b>B2B06110</b>	152	0.1	Internal	<b>786.00</b>	<b>655.00</b>
<b>B2B06112</b>	252	0.1	External	<b>790.00</b>	<b>658.00</b>
<b>B2B06252</b>	252	0.1	Internal	<b>947.00</b>	<b>789.00</b>

## OHAUS Scout® SKX Portable Precision Balances

2 YEARS



Portable precision balances with large backlit LCD. Built to endure demanding applications with superior overload protection. Features including faster stabilisation time, increased capacity, multiple connectivity options and stackable design make Scout the best weighing experience.

- Integrated overload protection system rated at ten times the capacity
- Large backlit display improves readability in low light conditions
- High-strength stainless steel pan and an impact-resistant plastic pan support
- 4 clearly marked buttons remove complexity, and guide you quickly and easily
- Ingenious draftshield (0.001g model only) was designed with an easy to remove top cover piece



Code	Capacity, g	Readability, g	Platform Dims, mm	Offer Price, €	Offer Price, £
<b>B2B7212</b>	120	0.001	Ø 93	<b>314.00</b>	<b>262.00</b>
<b>B2B7214</b>	220	0.01	Ø 120	<b>209.00</b>	<b>174.00</b>
<b>B2B7216</b>	420	0.01	Ø 120	<b>253.00</b>	<b>211.00</b>
<b>B2B7218</b>	620	0.01	Ø 120	<b>278.00</b>	<b>232.00</b>
<b>B2B7220</b>	1200	0.01	170 x 140	<b>318.00</b>	<b>265.00</b>
<b>B2B7222</b>	2200	0.01	170 x 140	<b>371.00</b>	<b>309.00</b>
<b>B2B7224</b>	420	0.1	Ø 120	<b>149.00</b>	<b>124.00</b>
<b>B2B7226</b>	620	0.1	170 x 140	<b>170.00</b>	<b>142.00</b>
<b>B2B7228</b>	2200	0.1	170 x 140	<b>223.00</b>	<b>186.00</b>
<b>B2B7230</b>	6200	0.1	170 x 140	<b>284.00</b>	<b>237.00</b>
<b>B2B7232</b>	8200	1	170 x 140	<b>223.00</b>	<b>186.00</b>



# OHAUS Scout® STX Portable Precision Balances

2 YEARS



High-performance portable balances with intuitive touchscreens for high accuracy and productivity. Featuring a slim design which allows stackable storage. Geared for superior performance with fast stabilisation time and high resolution weighing results, these portable balances set a new standard for a broad range of weighing applications. Features also include superior overload protection, multiple application modes and expanded connectivity options.

- 4.3" full-colour TFT graphic LCD touchscreen
- Advanced weighing technology allows for one-second stabilisation time for increased productivity
- Integrated overload protection system
- Mains or battery powered
- Draftshield protects the sample, increasing speed and repeatability (0.001g models only)



30% OFF

Code	Capacity, g	Readability, g	Platform Dims, mm	Offer Price, €	Offer Price, £
B2B4872	120	0.001	Ø 93	450.00	375.00
B2B4874	220	0.001	Ø 93	504.00	420.00
B2B4876	220	0.01	Ø 120	322.00	268.00
B2B4878	420	0.01	Ø 120	366.00	305.00
B2B4880	620	0.01	Ø 120	406.00	338.00
B2B4882	1200	0.01	170 x 140	454.00	378.00
B2B4884	2200	0.01	170 x 140	504.00	420.00
B2B4886	420	0.1	Ø 120	197.00	164.00
B2B4888	620	0.1	170 x 140	223.00	186.00
B2B4890	2200	0.1	170 x 140	322.00	268.00
B2B4892	6200	0.1	170 x 140	428.00	357.00
B2B4894	8200	1	170 x 140	305.00	254.00

# SLS Flowgen Incu-Shaker™ Incubated Shaker

2 YEARS



Compact shaking incubator with a remarkably small footprint. Accepts several platforms and a variety of flasks, tubes and other common vessels. The standard platform (included) features a non-slip, rubber coated surface, ideal for tissue culture flasks, Petri dishes and staining trays.

- Extremely compact, just 280mm wide
- Touch screen control over time, speed and temperature
- Horizontally circular 19mm orbit for aeration & mixing
- Instantly exchange flask clamps with MAGic Clamp™ accessories
- Program STEP feature for linking consecutive programs



34% OFF

Code	Temp Range, °C	Speed Range, RPM	Orbit, mm	Dims, w x d x h, mm	Offer Price, €	Offer Price, £
B2B7084	Ambient +5 - 70	30 - 300	19	280 x 480 x 330	2310.00	1925.00



## Benchmark MyTemp Mini Digital Incubator

2 YEARS

**Benchmark**  
Scientific

With digital temperature control, the MyTemp incubator provides convenient 'set and walk away' operation, eliminating the need for external thermometers and repetitive 'fine tuning' of an analogue control knob. Simply choose the desired temperature and the incubator immediately begins to heat up while accurately monitoring the chamber temperature and conveniently displaying the temperature in real time on the large LED control panel.

- Digital temperature control
- Personal sized with modest footprint
- Accepts bottles and flasks up to 2L
- Two adjustable shelves
- Internal outlet

**30% OFF**



Code	Temp Range, °C	Capacity, L	Dims, w x d x h, mm	Offer Price, €	Offer Price, £
<b>B2B7254</b>	Ambient +5 to 60	20	335 x 370 x 475	<b>419.00</b>	<b>349.00</b>

## SLS Lab Pro BeadBug Microtube Homogeniser

2 YEARS

**SLS**  
LAB  
PRO

High energy benchtop homogeniser that sets the performance standard for personal sized cell disruption and lysis instruments. The optimised mixing motion causes rapid cell disruption through constant high velocity impact from the hardened micro-beads chosen specifically for your sample type. Developed for samples too tough to be homogenised in a common lab vortexer, the BeadBug™ provides a convenient and economical alternative to the traditional, high capacity homogenisers on the market today.

- Extremely powerful mixing for lysis, grinding or homogenisation
- Faster and more effective than tissue grinders
- Homogenise up to 3 samples in disposable 2mL screw cap microtubes
- Extremely compact
- Eliminates the cross contamination

**35% OFF**



Code	Speed Range, RPM	Capacity	Dims, w x d x h, mm	Offer Price, €	Offer Price, £
<b>B2B7094</b>	2800 - 4000	3 x 2mL	170 x 210 x 135	<b>661.00</b>	<b>551.00</b>



## SLS Lab Pro Type 2 and 3 Water Purification Systems



SLS Lab Pro water purification system available in two water quality versions:

- Low cost, one box solution
- Wall or bench mounted
- 50% recovery rate keeps water costs to a minimum
- Energy consumption <60W
- Unique disposable RO maintains peak efficiency
- Consumables changed in seconds
- Built-in 35L reservoir
- Easy to install, low maintenance
- Minimal water wastage
- Mercury free UV



Specifications	
Type 2 Water Quality, MQ-cm	1 to 15
Type 3 Water Quality, $\mu\text{S}/\text{cm}$	<40
TOC (Type 2 only), ppb	$\leq 5$
Organics Rejection Rate (Type 3 only), %	<99
Feed Water Pressure, bar	0.1 to 6
Dims, w x d x h, mm	485 x 500 x 330
Weight, kg	20

- **Type 3** – Primary grade water (reverse osmosis) suitable for glass washers, autoclave feed, stability chambers and steam/humidity generators.
- **Type 2** – General laboratory grade water (deionisation) for buffer, reagent and media preparation, sample dilution, general chemistry and teaching applications.

Code	Model	Make Up Rate, L/hr	Offer Price, €	Offer Price, £
<b>B2B7316</b>	Choice 10 type 2 (DI)	10	3120.00	2600.00
<b>B2B7074</b>	Choice 10 type 2 (DI) UV	10	3210.00	2675.00
<b>B2B7072</b>	Choice 10 type 3 (RO)	10	2850.00	2375.00
<b>B2B7314</b>	Choice 10 type 3 (RO) UV	10	3112.00	2593.00
<b>B2B06262</b>	Choice 20 type 2 (DI)	20	3120.00	2600.00
<b>B2B06264</b>	Choice 20 type 2 (DI) UV	20	3420.00	2850.00
<b>B2B06258</b>	Choice 20 type 3 (RO)	20	2940.00	2450.00
<b>B2B06260</b>	Choice 20 type 3 (RO) UV	20	3120.00	2600.00

## Lonza DMEM with 4.5g/L Glucose

**Lonza**

Supplied in bottles of 500mL



Code	Description	Offer Price, €	Offer Price, £
<b>B2B7028</b>	With l-glutamine, sodium pyruvate and phenol red	3.95	3.29
<b>B2B7030</b>	Without l-glutamine, with sodium pyruvate and phenol red	3.95	3.29





# Your partner for Laboratory and Research Chemicals

Brought to you by



SCIENTIFIC  
LABORATORY  
SUPPLIES



- General Purpose Reagents
- Analytical Reagents
- Speciality Reagents
- Organic Research Chemicals
- Inorganic Compounds & Salts
- General & HPLC Solvents
- Acids & Bases
- Standards/Reference Materials
- pH Buffers & Conductivity Standards
- Volumetric Solutions
- Karl Fisher
- NMR - Deuterated Solvents & Reagents
- Anhydrous Solvents & Reagents
- Bioreagents
- Custom and Bulk Chemicals



Sigma-Aldrich®  
Lab & Production Materials



Supelco®  
Analytical Products



Reagecon  
Delivering the Correct Result

View the range online: [www.analab.co.uk](http://www.analab.co.uk) or [www.analab.ie](http://www.analab.ie)



## Shield Scientific SMARTLine™ Nitrile Gloves



- Blue, ambidextrous, beaded cuff, finger textured
- Nitrile synthetic rubber (acrylonitrile butadiene)
- Powder-free
- Short length (240mm/9.4")
- Non-sterile
- Medical device class 1 (MDR) according to the Regulation (EU) 2017/745
- Personal Protective Equipment Category III (PPE - Complex Design) according to the Regulation (EU) 2016/425
- AQL <1.5

**In Stock  
Now!**



**Supplied in cases of 1000 (10 packs of 100 gloves)**

Code	Size	List Price, €	List Price, £
<b>SAF12440</b>	X small	211.25	162.50
<b>SAF12460</b>	Small	211.25	162.50
<b>SAF12480</b>	Medium	211.25	162.50
<b>SAF12500</b>	Large	211.25	162.50
<b>SAF12520</b>	X large	211.25	162.50

Reusable Face Masks



## Reusable Face Masks

Premium and sustainable. Nanotech coated  
3-layered 100% cotton. Washable up to 100 times.

Code	Size	List Price, €	List Price, £
<b>COV1016</b>	Large	1.29	0.99
<b>COV1018</b>	Medium	1.29	0.99

## SLS Lab Pro Insulated Eco Drying Cabinets



SLS Lab Pro eco drying cabinets are designed with energy efficiency in mind, utilising thermal insulation and a user programmable digital control, for drying laboratory glassware, surgical instruments or media.

- Energy saving thermal insulation to 5 sides
- Low power consumption
- Easy accessible control system
- Digital temperature controller
- Digital 7 day 24hr timer
- Economical to run / lower running costs
- Dual circulating fans and easy roll mounting wheels on floor standing units.
- Corrosion free stainless steel internal chamber
- Anti-microbial powder coat paint to external surfaces
- Temperature range of 30 to 80°C



**20%  
OFF**

Code	Type	Capacity, L	Airflow	Door Style	Dims, w x d x h, mm	Offer Price, €	Offer Price, £
<b>B2B06326</b>	Bench	113	Static	Sliding	765 x 450 x 732	1373.00	1144.00
<b>B2B06324</b>	Bench	227	Static	Sliding	1000 x 550 x 807	1622.00	1352.00
<b>B2B06328</b>	Floor standing	426	Fan-assisted	Hinged	635 x 650 x 1870	3214.00	2678.00
<b>B2B06330</b>	Floor Standing	885	Fan-assisted	Hinged	1168 x 650 x 1870	4267.00	3556.00



## SLS Lab Pro Water Baths



Digital water baths providing a stable temperature environment with digital PID temperature control for precision with an LED display. Controls feature auto alarm settings, illuminated on/off switch, heater and over temperature indications.

- Temperature range: ambient +5 to 99°C
- Over temperature alarm with heater cut off
- Touch pad controls with easy wipe surface
- Painted surfaces feature antibacterial protection, immersed components are corrosion resistant
- Free additional year warranty (4 years total)

### Unstirred



- Sensitivity:  $\pm 0.2^{\circ}\text{C}$ , uniformity:  $\pm 0.1^{\circ}\text{C}$
- Supplied with clear, polycarbonate lid



Code	Capacity, L	Ext Dims, w x d x h, mm	Int Dims, w x d x h, mm	Drain Outlet	Offer Price, €	Offer Price, £
<b>B2B7076</b>	2	332 x 185 x 135	300 x 150 x 65	No	<b>392.00</b>	<b>327.00</b>
<b>B2B06266</b>	4	332 x 185 x 290	300 x 150 x 150	No	<b>443.00</b>	<b>369.00</b>
<b>B2B06268</b>	14	361 x 332 x 290	325 x 300 x 150	No	<b>521.00</b>	<b>434.00</b>
<b>B2B06270</b>	22	538 x 322 x 290	500 x 300 x 150	Yes	<b>581.00</b>	<b>484.00</b>
<b>B2B7078</b>	28	538 x 332 x 290	500 x 300 x 200	Yes	<b>648.00</b>	<b>540.00</b>

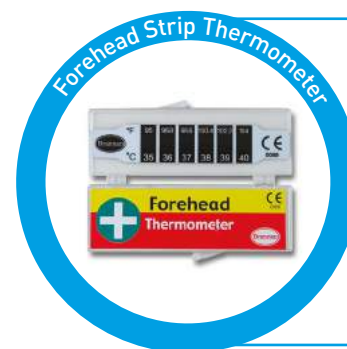
## Stirred



- Sensitivity:  $\pm 0.05^{\circ}\text{C}$ , uniformity:  $\pm 0.01^{\circ}\text{C}$
- Robust thermostirrer constructed from stainless steel for durability
- Low water level is indicated and heating is automatically suspended with an automatic restart when the bath is filled
- Can be set for water temperature or a combination of temperature and time
- Timer programmable to commence once a preset temperature is reached and setting retained once unit is turned off



Code	Capacity, L	Ext Dims, w x d x h, mm	Int Dims, w x d x h, mm	Offer Price, €	Offer Price, £
<b>B2B06272</b>	8	271 x 332 x 170	129 x 300 x 150	<b>814.00</b>	<b>678.00</b>
<b>B2B06274</b>	14	361 x 332 x 170	219 x 298 x 150	<b>820.00</b>	<b>683.00</b>
<b>B2B06276</b>	22	537 x 332 x 170	395 x 298 x 150	<b>864.00</b>	<b>720.00</b>



### Forehead Strip Thermometer

Clear case. Range: 35 to 40°C, divisions: 1.0°C, accuracy:  $\pm 1.0^{\circ}\text{C}$ .

Code	List Price, €	List Price, £
<b>THE5204</b>	1.29	0.99



## SLS Lab Pro Analogue Ultrasonic Baths

NEW 3 YEARS



With capacities from 1.5L to 25L, the SLS Lab Pro Analogue baths offer simple analogue timer and temperature controls, providing entry level ultrasonic baths ideal for cleaning small items for use in a wide range of applications. Supplied with a stainless steel basket and plastic lid. SLS2006 has a non-adjustable heater element.

- Ambient to 70°C temperature control on heated models
- 0 - 15 minute timer
- Compact and user-friendly



Code	Capacity, L	Heated	Overall Dims, w x d x h, mm	Int Dims, w x d x h, mm	Offer Price, €	Offer Price, £
<b>SLS2004</b>	1.5	No	180 x 160 x 190	150 x 140 x 100	<b>263.00</b>	<b>219.00</b>
<b>SLS2006</b>	1.5	Yes	180 x 160 x 190	150 x 140 x 100	<b>307.00</b>	<b>256.00</b>
<b>SLS2016</b>	2.5	No	270 x 170 x 210	240 x 140 x 100	<b>337.00</b>	<b>281.00</b>
<b>SLS2018</b>	2.5	Yes	270 x 170 x 210	240 x 140 x 100	<b>390.00</b>	<b>325.00</b>
<b>SLS2020</b>	4.5	Yes	330 x 180 x 275	300 x 150 x 150	<b>654.00</b>	<b>545.00</b>
<b>SLS2022</b>	13	Yes	375 x 345 x 275	330 x 300 x 150	<b>833.00</b>	<b>694.00</b>
<b>SLS2026</b>	25	Yes	550 x 345 x 365	500 x 300 x 200	<b>1182.00</b>	<b>985.00</b>

## SLS Lab Pro Digital Ultrasonic Baths

NEW 3 YEARS



With capacities from 4.5 to 25L, the SLS Lab Pro Digital baths offer precise and accurate process control of time, temperature and ultrasonic power through the LCD control panel. Incorporating frequency LEAP technology for homogeneous, repeatable ultrasonic activity throughout the tank. The SD card port means that each cycle can be validated for full process traceability via transfer to computer and provided software. Supplied with a stainless steel basket and plastic lid.

- Ambient to 70°C temperature control
- 0 - 99 minute timer
- Degas mode
- Energy saving mode
- Consistent cleaning results every time



Code	Capacity, L	Overall Dims, w x d x h, mm	Int Dims, w x d x h, mm	Offer Price, €	Offer Price, £
<b>SLS2030</b>	4.5	345 x 200 x 265	300 x 150 x 150	<b>918.00</b>	<b>765.00</b>
<b>SLS2038</b>	9.5	550 x 185 x 265	500 x 140 x 150	<b>1140.00</b>	<b>950.00</b>
<b>SLS2040</b>	12.5	345 x 285 x 365	295 x 245 x 200	<b>1309.00</b>	<b>1091.00</b>
<b>SLS2042</b>	13	375 x 345 x 265	330 x 300 x 150	<b>1320.00</b>	<b>1100.00</b>
<b>SLS2044</b>	17.5	375 x 345 x 365	330 x 300 x 200	<b>1446.00</b>	<b>1205.00</b>
<b>SLS2046</b>	25	550 x 345 x 365	500 x 300 x 200	<b>1699.00</b>	<b>1416.00</b>



## SLS Lab Pro S500 Mini Recirculating Chiller

2 YEARS



With a sophisticated touchscreen controller and 500W cooling power the S500 Mini is ideal for many laboratory applications. Built to save space, the Mini is about the size of the average desktop PC.

- A touchscreen interface
- Universal 90-260 VAC input voltage and 50/60Hz input frequency suitable for use all over the world
- Variable speed compressor and fan
- Whisper quiet
- Continual adjustment of refrigerant mass flow rate to control duty
- Water system constructed from 12mm push fit fittings
- USB port for downloading system data



Code	Temp Range, °C	Cooling Capacity, kW	Flow Rate, L/min	Offer Price, €	Offer Price, £
<b>B2B06404</b>	-10 to +60	0.5	3.5	<b>2957.00</b>	<b>2464.00</b>

## SLS Lab Basics Mini Vacuum Pumps

1 YEAR



Single-head, dry-running devices used in a wide range of laboratory applications. They transfer, compress and pump down without contamination.

- 100% oil-free transfer
- PTFE coated version for slightly aggressive or corrosive gases and vapours
- Maintenance-free
- High level of gas tightness
- IP20 motor protection
- Silencer fitted to outlet port
- 6mm hoesetail on inlet



Code	Diaphragm Material	Delivery, L/min	Ultimate Vacuum, mbar	Offer Price, €	Offer Price, £
<b>B2B06244</b>	EPOM rubber	6	100	<b>246.00</b>	<b>205.00</b>
<b>B2B06246</b>	PTFE coated	5.5	160	<b>264.00</b>	<b>220.00</b>



# Benchmark UV Clave™ UltraViolet Chamber

2 YEARS



Short-wave UV light is an effective method for the disinfection of surface DNA, RNA and microorganisms. With the UV Clave™ chamber, highly focused UV irradiation is used to disinfect tools, vessels and other research items, eliminating up to 99% of surface contamination. Unlike most UV chambers, the UV Clave™ includes powerful UV-C bulbs on both the top and bottom of the chamber. When combined with our proprietary shelf that allows for >90% of UV-C light transmission and highly reflective chamber walls, the result is true 360° exposure with no blind spots.

- Improves quality of PCR research by reducing potential contaminants
- Exposure time is adjustable
- Integrated auto shut-off prevents illumination when the door is open
- Multiple lamps and reflective chamber walls provide true 360° irradiation
- Inactivates DNA, RNA, viruses & bacteria on PCR vessels
- Chamber comes with 2 wire and 1 transparent shelf



Code	Dims, w x d x h, mm	Offer Price, €	Offer Price, £
B2B7256	292 x 267 x 400	422.00	352.00

# Benchmark BenchWaver™ 3D Rocker

2 YEARS



The BenchWaver™ combines the basic rocking motion of traditional platform rockers with the circular motion of an orbital shaker. This combination is ideal for generating the optimum 3-dimensional “undulating” motion commonly preferred for molecular biology applications. The tilt angle is instantly adjustable from 0 to 10° and the mixing speed can be adjusted from 5 to 105rpm, using the large, user-friendly LCD control panel. Combined control of both parameters makes the BenchWaver™ a versatile workhorse that can provide anything from gentle, slow moving waves to a rapid, more vigorous motion. Additionally, time of operation can be selected from 1 minute up to 99 hours or for continuous operation.

- Undulating, 3-dimensional motion
- Adjustable speed and tilt angle
- Large platform supplied complete with a non-slip, rubber mat
- Ideal for staining, washing & general mixing
- Can be used in refrigerated or incubated environments from 2 to 60°C



Code	Speed Range, RPM	Tilt Angle, °	Dims, w x d x h, mm	Platform Dims, mm	Offer Price, €	Offer Price, £
B2B7250	5 - 105	0 - 10	330 x 340 x 248	340 x 330	1007.00	839.00



## Benchmark Roto-Therm™ Plus Incubated Rotator

2 YEARS

Benchmark Scientific

Benchmark's Roto-Therm™ incubated rotating mixer provides a wide range of mixing capabilities. Suitable for an array of laboratory applications including resuspension, protein binding, nucleic acid purification, histochemistry, hybridisation etc, the mixers include interchangeable tube holders for accommodating all common tube sizes from 0.5 to 50mL. The motion can be adjusted from vertical (end over end) mixing, to horizontal (rolling or hybridization style) mixing. For applications requiring temperature control, the Roto-Therm™ can be digitally programmed to maintain chamber temperatures of ambient +5°C to 60°C and include an "in-lab" calibration function for ensuring accurate temperature control.

- Variable speed: 5 to 70rpm
- "Mix" function: rotating in combination w/ oscillations (increased mixing)
- "Pause" function: rotating with intermittent "stops" during rotation
- "Rock" function: back and forth, gentle rocking motion (see-saw)
- Additional rocking platform (4.5 x 3in), as well as a 96 x 0.2mL tube/strip/plate holder for mixing PCR vessels in the "Mix" mode
- Rotated mixing with temperature control
- Includes tube holders for common tube sizes

40% OFF



Code	Temp Range, °C	Speed Range, RPM	Dims, w x d x h, mm	Offer Price, €	Offer Price, £
<b>B2B7248</b>	Ambient +5 - 60	5 - 70	295 x 216 x 229	<b>529.00</b>	<b>441.00</b>

## Benchmark myBlock™ Digital Dry Bath with Single Quick-Flip Block

2 YEARS

Benchmark Scientific

Benchmark's myBlock™ includes advanced microprocessor controls, timed or continuous operation and a removable hinged lid. In addition, an optional external temperature feedback probe can be positioned directly inside a sample tube, providing real-time control and monitoring of actual sample temperature. The transparent lid helps to promote better uniformity and minimise temperature stratification in the block by maintaining a warm air jacket layer. It also helps to reduce energy consumption by minimising heat loss to the environment. The hinged lid can be flipped open, or easily lifted off to accommodate taller tubes. The universal Quick-Flip™ block accept tubes from 0.5 to 2.0mL and, with just a quick flip to the other side, accommodate 0.2mL tubes or PCR strips.

- Digital temperature control (set and walk away)
- Hinged lid improves uniformity & conserves energy
- Additional blocks sold separately

35% OFF



Code	Temp Range, °C	Dims, w x d x h, mm	Offer Price, €	Offer Price, £
<b>B2B7272</b>	Ambient +5 - 105	180 x 250 x 130	<b>444.00</b>	<b>370.00</b>



# BACK 2 BASICS 2021

GREAT  
OFFERS  
INSIDE



WORLD  
LAND  
TRUST™  
[www.carbonbalancedpaper.com](http://www.carbonbalancedpaper.com)



[sales@analab.co.uk](mailto:sales@analab.co.uk) | [www.analab.co.uk](http://www.analab.co.uk)

Brought to you by



SCIENTIFIC  
LABORATORY  
SUPPLIES

