

FOCUS

EXCLUSIVE OFFERS & EXCITING NEW PRODUCTS



see page 19...

SAVE
over
25%

Eppendorf Centrifuge 5430/5430 R

- Extensive choice of rotors (including microplates)
- Versatile

See Inside for Great Offers on:

- **NEW** Cleaver MultiSUB™ miniONE Electrophoresis System - (page 30)
- **NEW** Memmert ICHeco CO₂ Cooled Climate Chambers - (page 39)



30%
OFF

see page 28...

PCRmax Alpha Cyclers

- Compact and feature driven
- Ideal for multi-user environments





The Next Benchmark

The new refrigerated Centrifuge 5910 R

The Centrifuge 5910 R sets the next benchmark in versatility, capacity and user convenience.

Its main swing-bucket rotor holds both conical tubes and plates – no need to change rotor buckets or adapters. This improves handling and saves time.

- > Max. capacity: 4 x 750 mL or 36 x 50 mL conical
- > Excellent rotor versatility
- > Modern operating system with outstanding functionality
- > Advanced temperature management that keeps your samples safe



www.eppendorf.com/next-benchmark

Eppendorf® and the Eppendorf Brand Design are registered trademarks of Eppendorf AG, Germany. All rights reserved, including graphics and images. Copyright © 2018 by Eppendorf AG.



FOCUS

September 2018 Edition

WELCOME

Now firmly established as THE promotions brochure for laboratories - FOCUS goes from strength to strength.

This edition promises great savings on a huge range of equipment, consumables and reagents. Whatever your discipline you are sure to find a product at a budget to suit your needs!

Remember: These offers are exclusive to SLS and valid until 31st Dec 2018



KEY to product symbols:



Length of warranty



No. years warranty can be extended



Lifetime warranty



Sustainability



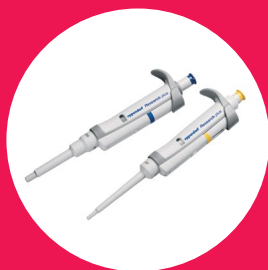
KEY Highlights



Corning Cell Counter
See page 35



Sartorius Secura & Quintix
Semi-Micro Balances
See page 5



Eppendorf Research
Plus Pipettes
See page 11



MotiC Panthera E
Microscopes
See page 32



SLS Lab Pro Dual Type
I and II Water Purification
System
See page 25



Gram Biocompact II 125L
Refrigerator and Freezer
See page 52

A&D HR-A/Z Analytical Balances

5 YEARS



These top-loading analytical balances have a compact footprint. The breeze break has rotary sliding doors that slide behind the balance and can be removed with one touch. These features, combined with the small footprint, make the HR-AZ/HR-A balances ideal for applications where space is at a premium including glove boxes and controlled environment cabinets.

- ✓ Automatic internal calibration for HR-AZ
- ✓ Compact footprint
- ✓ Reverse Backlit LCD Display for easy to read weighing results
- ✓ Statistical calculation function eliminates the need for a stats printer
- ✓ Standard RS-232C
- ✓ Fast compact SHS Sensor, response time ~ 2 seconds



40% OFF
list price

Code	Capacity, g	Readability, mg	Calibration	Offer Price, £	Offer Price, €
F10544	102	0.1	External	489.00	567.00
F10546	102	0.1	Internal	594.00	689.00
F10548	152	0.1	External	528.00	612.00
F10550	152	0.1	Internal	624.00	724.00
F10552	252	0.1	External	627.00	727.00
F10554	252	0.1	Internal	750.00	870.00

SLS Select White Polystyrene



Square Weighing Boats

SLS Select White Weighing Boats

Supplied in packs of 1000

Code	Description	Offer Price, £	Offer Price, €
F10666	7mL	10.25	11.89
F10668	100mL	25.18	29.21
F10670	250mL	46.33	54.00

SPECIAL PRICE

Sartorius Secura Semi-Micro Balances

2 YEARS



- ✓ Integrated protection systems for minimising your risk of obtaining incorrect results
- ✓ Real-time alarm messaging and interactive user guidance for levelling to prevent inaccurate results due to an unlevelled balance
- ✓ SQmin for automatic detection and active monitoring to ensure you are within the acceptable USP operating range for reliable results
- ✓ Fully automatic internal adjustment function, isoCAL, for the highest possible accuracy at all times
- ✓ Cal Audit Trail for easy, traceable documentation of all calibration and adjustment data
- ✓ Safe and clear documentation by sample and batch identifiers for keeping perfect track of weighing data
- ✓ GLP-GMP-compliant printouts
- ✓ Standard password security features for protection against tampering and unauthorised access
- ✓ Integrated PC direct function and Plug & Work connectivity to a Sartorius printer

OVER
25%
OFF



Code	Capacity, g	Readability, mg	Offer Price, £	Offer Price, €
F10186	120	0.01	4,168.00	4,835.00
F10188	120/220	0.01/0.1	4,400.00	5,104.00

Sartorius Quintix Semi-Micro Balances

2 YEARS

- ✓ Intuitive operation of the balance without having to read a manual thanks to the new user interface and colour touch screen
- ✓ Integrated application programs and intuitive user guidance for greater efficiency in your daily lab routine
- ✓ Highest accuracy and convenience ensured at all times by the isoCAL fully automatic internal adjustment feature
- ✓ Easier record-keeping using the balances directly integrated PC functions and Plug & Work connectivity to a Sartorius lab printer

OVER
25%
OFF
list price



Code	Capacity, g	Readability, mg	Offer Price, £	Offer Price, €
F10190	30	0.01	3,088.00	3,582.00
F10192	60	0.01	3,416.00	3,962.00
F10194	60/120	0.01/0.1	3,712.00	4,306.00

Radwag Ultra-Microbalance

2
YEARS



The Radwag Ultra-microbalance UYA 4Y is designed to meet the highest requirements for determination of mass, with excellent readability starting from 0.1µg. Automatic levelling and internal adjustment/calibration maintains excellent reliability and accuracy. Separation of display and measuring system eliminates heat interference from the instrument's electronics and protects it from shocks and vibrations caused by users operating the instrument. All elements are made of glass and steel which eliminates an impact of electrostatics on the weighing process.



Request a
demo!

Save
€8120

Code	Capacity, g	Readability, µg	Pan Size, mm	Offer Price, £	Offer Price, €
F10680	6.1	0.1	16	16,900.00	19,604.00

Radwag Microbalance

2
YEARS

The Radwag MYA2.4Y microbalance features a Dual Core 2 x 1GB processor (with 8GB RAM) for fast operation and shorter stabilisation time. With sd ≤1d combined with USP regulations conformity (Section 41 and 1251), these balances set a new standard for mass measurement quality. Wireless communication between balance terminal and a weighing unit make it possible to comfortably operate 4Y series balances in laminar air flow cabinets and fume cupboards. Features ALIBI memory designed to provide protection and automatic recording of your measurement.

30%
OFF

Request a
demo!

Code	Capacity, g	Readability, µg	Pan Size, mm	Offer Price, £	Offer Price, €
F10682	2.1	1	16	6,279.00	7,284.00

Gilson PIPETMAN P Classic Pipettes



Gilson's PIPETMAN P Classic pipette is designed and manufactured to provide you with a range of robust, accurate and precise pipettes. The PIPETMAN P Classic is a fully adjustable, air-displacement pipette with a direct volume reading displayed in decimal digits to prevent mistakes in volume setting.

- ✓ Stainless-steel PVDF components ensure resistance to aggressive chemicals
- ✓ Air-tight seal with unique grease-free "dry seal" technology
- ✓ Performance exceeding ISO recommendations by an average of 50%

OVER
40%
OFF
list price



Code	Description	Volume Range, μ L	Offer Price, £	Offer Price, €
F10102	Pipetman P2	0.2-2	115.00	133.00
F10104	Pipetman P10	1-10	115.00	133.00
F10106	Pipetman P20	2-20	115.00	133.00
F10108	Pipetman P100	20-100	115.00	133.00
F10110	Pipetman P200	50-200	115.00	133.00
F10112	Pipetman P1000	200-1000	115.00	133.00
F10114	Pipetman P5000	1000-5000	115.00	133.00
F10116	Pipetman P10mL	1000-10,000	115.00	133.00

Vibration Damping Table



Vibration Damping Table 45 x 35cm

Code	Offer Price, £	Offer Price, €
F10556	135.00	157.00

SPECIAL OFFER

30%
OFF

Gilson PIPETMAN L Pipettes L



PIPETMAN® L is a lightweight pipette with a newly designed handle that fits naturally in your hand. The new shape helps ensure a good fit, the larger arched hook reduces tensions while holding the pipette and the thumb is positioned closer to the push button thus reducing overall pipetting forces. PIPETMAN L features a patented volume locking system for safe, secure pipetting. These features, in combination with Gilson's latest lubricated piston assembly mean that Pipetman L offers very light pipetting forces.

- ✓ Patented volume locking system preventing accidental changing of volume setting
- ✓ Adjustable tip ejector button to adapt to both right- and left-handed users, excluding multichannels and 5 and 10mL pipettes
- ✓ Clip mechanism allows easy and safe removal of tip ejector
- ✓ Lowest pipetting forces on the market give increased comfort even when pipetting for long periods
- ✓ GLP features include 2-D bar code for traceability



37%
OFF
list price

Code	Description	Volume, µL	Ejector	Offer Price, £	Offer Price, €
F10118	Pipetman L P2L	0.2-2	Metal	139.00	161.00
F10120	Pipetman L P10L	1-10	Metal	139.00	161.00
F10122	Pipetman L P20L	2-20	Metal	139.00	161.00
F10124	Pipetman L P100L	10-100	Metal	139.00	161.00
F10126	Pipetman L P200L	20-200	Metal	139.00	161.00
F10128	Pipetman L P1000L	100-1000	Metal	139.00	161.00
F10130	Pipetman L P2L	0.2-2	Plastic	139.00	161.00
F10132	Pipetman L P10L	1-10	Plastic	139.00	161.00
F10134	Pipetman L P20L	2-20	Plastic	139.00	161.00
F10136	Pipetman L P100L	10-100	Plastic	139.00	161.00
F10138	Pipetman L P200L	20-200	Plastic	139.00	161.00
F10140	Pipetman L P1000L	100-1000	Plastic	139.00	161.00
F10142	Pipetman L P5000L	500-5000	-	139.00	161.00
F10144	Pipetman L P10mL	1000-10,000	-	139.00	161.00

Gilson PIPETMAN Neo Multichannel Pipettes



The multichannel version of PIPETMAN Neo provides performance, precision, and durability while offering a high level of comfort.

37%
OFF
list price

Benefits include:

- ✓ Universal Tip Compliance - tip-holders have been specifically designed to fit the major leading tip brands in addition to Gilson's own Diamond® tips
- ✓ Effortless Tip Ejection - PIPETMAN Neo Multi tip ejection forces are among the lowest on the market thus reducing RSI risks
- ✓ The use of stainless steel and PVDF components ensure high resistance to aggressive chemicals and maximise the life of Pipetman Neo
- ✓ Easy to maintain - designed to allow easy access to user-serviceable parts, original parts available through the Gilson Service Centre of Excellence
- ✓ The lower part is autoclavable, allowing proactive protection against accidental contamination



Code	Channel	Volume, µL	Offer Price, £	Offer Price, €
F10146	8	2-20	349.00	405.00
F10150	8	20-200	349.00	405.00
F10148	12	2-20	399.00	463.00
F10152	12	20-200	399.00	463.00

Gilson PIPETMAN L Multichannel Pipette



PIPETMAN® L is a lightweight pipette with a newly designed handle that fits naturally in your hand. The new shape helps ensure a good fit, the larger arched hook reduces tensions while holding the pipette and the thumb is positioned closer to the push button thus reducing overall pipetting forces. PIPETMAN L features a patented volume locking system for safe, secure pipetting. These features, in combination with Gilson's latest lubricated piston assembly mean that Pipetman L offers very light pipetting forces.

**37%
OFF
list price**

- ✓ Patented volume locking system preventing accidental changing of volume setting
- ✓ Adjustable tip ejector button to adapt to both right- and left-handed users, excluding multichannels and 5 and 10mL pipettes
- ✓ Clip mechanism allows easy and safe removal of tip ejector
- ✓ Lowest pipetting forces on the market give increased comfort even when pipetting for long periods
- ✓ GLP features include 2-D bar code for traceability



Code	Channel	Volume, µL	Offer Price, £	Offer Price, €
F10154	8	0.5-10	399.00	463.00
F10158	8	2-20	399.00	463.00
F10162	8	20-200	399.00	463.00
F10166	8	20-300	399.00	463.00
F10156	12	0.5-10	459.00	532.00
F10160	12	2-20	459.00	532.00
F10164	12	20-200	459.00	532.00
F10168	12	20-300	459.00	532.00

Eppendorf Research Plus Pipettes

Eppendorf sets a new standard in pipetting.

The ultra-light Eppendorf Research® plus pipette meets the highest needs in precision and accuracy - combined with ultimate ergonomics and increased flexibility.

- ✓ Light weight for ease of use and comfort
- ✓ Low tip-ejection forces for stress-free workflow
- ✓ Fully autoclavable to save time

eppendorf



30%
OFF
list price



Code	Volume, µL	Offer Price, £	Offer Price, €
F10196	0.1-2.5	145.00	168.00
F10198	0.5-10	145.00	168.00
F10212	0.2-20	145.00	168.00
F10200	2-20	145.00	168.00
F10202	10-100	145.00	168.00
F10204	20-200	145.00	168.00
F10214	30-300	145.00	168.00
F10206	100-1000	145.00	168.00
F10208	500-5000	145.00	168.00
F10210	1000-10,000	145.00	168.00

Eppendorf Pipette Accessories

Code	Description	Offer Price, £	Offer Price, €
F10216	Carousel for 6 Pipettes	79.00	92.00
F10218	Holder for Multipipette (fits carousel or can be wall mounted)	21.00	24.36

FREE Eppendorf Multipette M4 when you buy 7 Packs of Combitips Advanced

The Eppendorf Multipette M4 positive displacement dispenser pipette offers a unique volume range of 1µL - 10mL, and is the only mechanical dispenser that dispenses the aspirated liquid up to 100 times without refilling the tip. The innovative step counter supports error-free working even after an interruption or distraction during the dispensing procedure.

- ✓ Repetitive Dispensing of volumes in long series
- ✓ Contamination-free dispensing of hazardous liquids
- ✓ Precise and accurate dispensing of viscous solutions (e.g. glycerol) or liquids with high vapour pressure (e.g. ethanol)
- ✓ Purchase 7 packs of Combitips Advanced from the list below at your normal price to receive a FREE Multipette M4 (Multipette and Combitips shipped Separately)



Combitips Advanced - Eppendorf Quality

High precision and accuracy guaranteed by precise molding and testing.

Code	Colour	Volume, mL	Price, £	Price, €
F10220	White	0.1	75.00	87.00
F10222	Light blue	0.2	75.00	87.00
F10224	Purple	0.5	75.00	87.00
F10226	Yellow	1.0	75.00	87.00
F10228	Green	2.5	75.00	87.00
F10230	Blue	5.0	75.00	87.00
F10232	Orange	10.0	75.00	87.00
F10234	Red	25.0	89.00	103.00
F10236	Light grey	50.0	98.00	114.00

Combitips Advanced - PCR Clean

Certified free of DNase, RNase, nucleic acids and PCR inhibitors.

Code	Colour	Volume, mL	Price, £	Price, €
F10238	White	0.1	95.00	110.00
F10240	Light blue	0.2	95.00	110.00
F10242	Purple	0.5	95.00	110.00
F10244	Yellow	1.0	95.00	110.00
F10246	Green	2.5	95.00	110.00
F10248	Blue	5.0	95.00	110.00
F10250	Orange	10.0	95.00	110.00
F10252	Red	25.0	111.00	129.00
F10254	Light grey	50.0	120.00	139.00

Combitips Advanced - Biopur

Guaranteed to be sterile and free of pyrogens, RNase, DNase, DNA and ATP as well as PCR inhibitors. Individually wrapped.

Code	Colour	Volume, mL	Price, £	Price, €
F10256	White	0.1	138.00	160.00
F10258	Light blue	0.2	138.00	160.00
F10260	Purple	0.5	138.00	160.00
F10262	Yellow	1.0	138.00	160.00
F10264	Green	2.5	138.00	160.00
F10266	Blue	5.0	138.00	160.00
F10268	Orange	10.0	138.00	160.00
F10270	Red	25.0	161.00	187.00
F10272	Light grey	50.0	174.00	202.00

Combitips are supplied in packs of 100



Thermo Scientific Finnpiquette F1 GLP kits



With significant enhancements, the Thermo Scientific Finnpiquette F1 system delivers performance with precision, all in a lightweight design that maximises user comfort and reduces strain.

- ✓ Extended 5 year warranty

GLP Kit 1 includes:

- ✓ Single channel 1-10 μ L, 10-100 μ L and 100-1000 μ L pipettes
- ✓ F-Series Stand
- ✓ 3 Racks of Finntip Flex tips

GLP Kit 3 includes:

- ✓ Single channel 10-100 μ L, 100-1000 μ L and 1-10mL pipettes
- ✓ F-Series Stand
- ✓ 2 Racks of Finntip Flex tips and 1 Rack of Finntip tips

GLP Kit 2 includes:

- ✓ Single channel 0.2-2 μ L, 2-20 μ L, 20-200 μ L and 100-1000 μ L pipettes
- ✓ F-Series Stand
- ✓ 4 Racks of Finntip Flex tips

GLP Kit 4 includes:

- ✓ Single channel 2-20 μ L, 20-200 μ L and 100-1000 μ L pipettes
- ✓ F-Series Stand
- ✓ 3 Racks of Finntip Flex tips

40%
OFF
list price



Code	Description	Volume Range, μ L	Offer Price, £	Offer Price, €
F10490	Finnpiquette F1 GLP Kit 1	1-1000	540.00	626.00
F10492	Finnpiquette F1 GLP Kit 2	0.2-1000	652.00	756.00
F10494	Finnpiquette F1 GLP Kit 3	10-10,000	549.00	637.00
F10496	Finnpiquette F1 GLP Kit 4	2-1000	540.00	626.00

Sartorius Tacta Pipette Multipack

2
YEARS



Designed with comfort in mind, Tacta makes pipetting effortless and safe, while producing accurate and reliable results time after time. The unique handle and finger hook design lets the pipette rest lightly in your hand, with no need to grip the handle tightly and the large, easy-to-read display helps you to see all four digits of the set volume from a distance without straining your eyes. Tacta is made from carefully selected materials, with each component designed to meet the highest standards.



35%
OFF
list price

Code	Description	Contents	Offer Price, £	Offer Price, €
F10170	Tacta 3 -pack 10	3 x Single channel pipettes (0.5-10 / 10-100/ 100-1000µL); 3 x tip racks - 96 tips (0.2-10 / 0.5-200 / 10-1000µL); linear stand; 3 x pipette holders	371.70	431.00
F10172	Tacta 3 -pack 20	3 x Single channel pipettes (2-20 / 20-200/ 100-1000µL); 2 x tip racks - 96 tips (0.5-200 / 10-1000µL); linear stand; 3 x pipette holders	371.70	431.00
F10174	Tacta 4 -pack 20	4 x Single channel pipettes (0.5-10 / 2-20 / 20-200/ 100-1000µL); 3 x tip racks - 96 tips (0.1-10 / 0.5-200 / 10-1000µL); linear stand; 4 x pipette holders	486.50	564.00
F10176	Tacta 4-pack 100	4 x Single channel pipettes (0.5-10 / 10-100 / 20-200/ 100-1000µL); 3 x tip racks - 96 tips (0.1-10 / 0.5-200 / 10-1000µL); linear stand; 4 x pipette holders	486.50	564.00
F10178	Tacta 5-pack 10	5 x Single channel pipettes (0.5-10 / 10-100 / 20-200 / 100-1000 / 500-5000µL); 2 x tip racks - 96 tips (0.5-200 / 10-1000µL); 1x tip rack - 50 tips (5000µL); linear stand; 5 x pipette holders	604.10	701.00
F10180	Tacta 5 -pack 20	5 x Single channel pipettes (2-20 / 10-100 / 20-200 / 100-1000 / 500-5000µL); 2 x tip racks - 96 tips (0.5-200 / 10-1000µL); 1x tip rack - 50 tips (5000µL); linear stand; 5 x pipette holders	604.10	701.00
F10182	Tacta 3+1 -pack	3 x Single channel pipettes (0.5-10 / 20-200 / 100-1000µL); 1 x 8 channel pipette (30-300µL); 4 x tip racks - 96 tips (0.1-10 / 0.5-200 / 5-350 / 10-1000µL); linear stand; 4 x pipette holders	672.00	780.00
F10184	Tacta 3 -pack Max	3 x Single channel pipettes (100-1000 / 500-5000 / 1000- 10000µL); 1 x tip racks - 96 tips (10-1000µL); 2 x bulk in a bag tips (100 x 0.1-5mL / 250 x 1-10mL); linear stand; 3 x pipette holders	371.70	431.00



Free annual preventative maintenance service

at end of year one on all
Mediaclave and Mediajet

Worth up to
€986



Quote reference
'FMEDIA'
when placing
your order

INTEGRA



Integra PIPETGIRL

£10 from each sale donated to
Breast Cancer Research

Code	Offer Price, £	Offer Price, €
F10562	259.00	300.00

SPECIAL OFFER
33%
OFF

SLS Lab Pro Reload Pipette Tips



SLS Lab Pro Reloads provide a low cost, environmentally friendly alternative to racked tips. The system allows you to reload your empty racks with new tips in a single movement. The transfer card is designed to prevent contamination by minimising the amount of handling.

- ✓ Reload up to 10 trays in 90 seconds
- ✓ Reuse existing racks
- ✓ Requires 57% less storage space than full racks
- ✓ Generates 90% less packaging waste



Remove snapcard from your empty rack. Tear the strip at the top of the bag and remove protective cover (extra lid).



Transfer a new card to the empty rack. You will hear a click when the snapcard is secured.



Replace the extra lid in the bag to protect your unused snapcards. At the bottom of the bag is an extra rack.



Seal bag for later use.

Code	Description	Pack	Offer Price, £	Offer Price, €
F10592	10µL	10 x 96	14.86	17.24
F10590	10XL	10 x 96	14.86	17.24
F10594	200µL	10 x 96	13.93	16.16
F10598	1000µL	10 x 96	16.13	18.71
F10602	Empty rack for 10 to 300µL tips	EACH	*1.62	*1.88
F10604	Empty rack for 1000 or 1250µL tips	EACH	*5.95	*6.90

*List Price

Brand Dispensette® S bottle-top dispensers

The Dispensette® S bottle-top dispenser combines innovative ideas with proven technology and makes dispensing safer and convenient.

50
years
BRAND
Dispensers



- ✓ New valve system – no additional sealing rings required
- ✓ Simple priming by optimised flow channels- less dispensing force
- ✓ Autoclavable at 121 °C
- ✓ Easy to calibrate and adjust in order to comply with ISO 9001 and GLP guidelines
- ✓ Easy to dismantle for cleaning

**HUGE
SAVINGS**

Dispensette® S Digital with recirculation valve

Code	Volume, mL	Subdivision, mL	Offer Price, £	Offer Price, €
F10418	0.1-1	0.005	220.90	256.00
F10420	0.2-2	0.01	220.90	256.00
F10422	0.5-5	0.02	220.90	256.00
F10424	1-10	0.05	220.90	256.00
F10426	2.5-25	0.1	274.50	318.00
F10428	5-50	0.2	293.90	341.00



Dispensette® S Analog-adjustable with recirculation valve

Code	Volume, mL	Subdivision, mL	Offer Price, £	Offer Price, €
F10430	0.1-1	0.02	195.70	227.00
F10432	0.2-2	0.05	195.70	227.00
F10434	0.5-5	0.1	195.70	227.00
F10436	1-10	0.2	195.70	227.00
F10438	2.5-25	0.5	248.70	288.00
F10440	5-50	1.0	264.80	307.00
F10442	10-100	1.0	351.30	408.00



Dispensette® S Organic Digital with recirculation valve

Code	Volume, mL	Subdivision, mL	Offer Price, £	Offer Price, €
F10444	0.5-5	0.02	220.90	256.00
F10446	1-10	0.05	220.90	256.00
F10448	2.5-25	0.1	274.50	318.00
F10450	5-50	0.2	293.90	341.00



Dispensette® S Organic Analog-adjustable with recirculation valve

Code	Volume, mL	Subdivision, mL	Offer Price, £	Offer Price, €
F10452	0.5-5	0.1	195.70	227.00
F10454	1-10	0.2	195.70	227.00
F10456	2.5-25	0.5	248.70	288.00
F10458	5-50	1.0	264.80	307.00
F10460	10-100	1.0	351.30	408.00



VelociRuptor V2 Microtube Homogeniser



The VelociRuptor V2 completely lyses, grinds and homogenises a broad variety of biological samples. Even the most difficult and resistant samples are fully homogenised, often in 35 seconds or less. The stainless steel tube carrier subjects up to 24 samples to an optimised, high speed, 3D motion, producing high energy impacts between the samples and micro-beads to release cellular contents. After homogenisation, samples can be centrifuged and the supernatant collected for further processing. To protect fragile, heat sensitive samples, the unit can be programmed to operate in shortened consecutive cycles with a rest period in between.



- ✓ Extremely powerful mixing action for lysis, grinding or homogenisation
- ✓ 3D rotating high speed motion – for quick disruption of fibrous tissues and resistant cells
- ✓ Brushless motor
- ✓ Eliminates the cross-contamination associated with hand-held homogenisers
- ✓ Faster and more effective than tissue grinders
- ✓ Mix up to 24 tubes simultaneously
- ✓ Optional 12 x 5mL tube rotor for larger sample volumes (sold separately)

Code	Description	Offer Price, £	Offer Price, €
F10634	VelociRuptor V2 microtube homogeniser	4,496.00	5,215.00

Accessories

Code	Description	Pack	List Price, £	List Price, €
F10636	Prefilled 2.0mL tubes silica (glass) beads 0.1mm acid washed	50	91.00	106.00
F10638	Prefilled 2.0mL tubes silica (glass) beads 0.5mm acid washed	50	91.00	106.00
F10640	Prefilled 2.0mL tubes silica (glass) beads 1.0mm acid washed	50	91.00	106.00
F10642	Prefilled 2.0mL tubes zirconium beads 0.1mm triple-pure - high impact	50	128.00	148.00
F10644	Prefilled 2.0mL tubes zirconium beads 0.5mm triple-pure - high impact	50	128.00	148.00
F10646	Prefilled 2.0mL tubes zirconium beads 1.0mm triple-pure - high impact	50	128.00	148.00
F10648	Prefilled 2.0mL tubes zirconium beads 1.5mm triple-pure - high impact	50	128.00	148.00
F10650	Prefilled 2.0mL tubes zirconium beads 3.0mm triple-pure - high impact	50	128.00	148.00
F10652	Triple-pure (zirconium) starter kit 10 each of 0.1 0.5 1.0 1.5 and 3.0mm	50	128.00	148.00
F10654	Prefilled 2.0mL tubes stainless steel 2.8mm acid washed	50	128.00	148.00
F10656	2.0mL conical bottom sterile PCR clean screw cap micro centrifuge tube	500	115.00	133.00
F10658	Tubes (empty) with caps and sealing ring	1000	137.00	159.00
F10660	Tubes (empty) with caps and sealing ring	50	34.70	40.00
F10662	Prefilled 5.0mL tubes stainless steel beads 2.8mm acid washed	50	174.00	202.00
F10664	12 x 5mL tube rotor for VelociRuptor V2	Each	250.00	290.00

Eppendorf Centrifuge 5430/5430 R

The Eppendorf 5430 series of centrifuges offers a versatile 30 place centrifuge with an extensive choice of different rotors including microplates, 15mL and 50mL Falcon® tubes and all common blood collection tubes. Available with the option of rotary controls or a keypad for ease of cleaning, the refrigerated version has the compressor at the back keeping the width narrow and access height low.

Product features include:

- ✓ 8 rotors for tubes and microplates allows centrifugation of all common vessel formats
- ✓ Maximum rcf 30,130 x g
- ✓ Maximum spin speed 17,500 RPM
- ✓ ECO shut-off engages after 8 hours of none-use
- ✓ Patented dynamic processor control optimises cooling, extends compressor life and reduces energy consumption
- ✓ FastTemppro® allows programming of pre-setting via date and time - centrifuge can be refrigerated and ready for use at the pre-selected time
- ✓ Automatic rotor recognition and speed limitation
- ✓ Automatic rotor imbalance detection



Code	Description	Offer Price, £	Offer Price, €
F10274	Centrifuge 5430 G with rotor FA-45-30-1	1,999.00	2,319.00
F10276	Centrifuge 5430 (IVD) with rotor FA-45-30-1	2,099.00	2,435.00
F10278	Centrifuge 5430 (IVD) with knobs including rotor FA-45-30-1	2,099.00	2,435.00
F10280	Centrifuge 5430 G with knobs including rotor FA-45-30-1	1,999.00	2,319.00
F10282	Centrifuge 5430 R G with keypad including rotor FA-45-30-1	3,749.00	4,349.00
F10284	Centrifuge 5430 R (IVD) with keypad 230V/50-60Hz including rotor FA-45-30-1	3,899.00	4,523.00
F10286	Centrifuge 5430 R G with knobs including rotor FA-45-30-1	3,749.00	4,349.00
F10288	Centrifuge 5430 R (IVD) with knobs including rotor FA-45-30-1	3,899.00	4,523.00

Accessories

Code	Description	Offer Price, £	Offer Price, €
F10290	Fixed-angle rotor FA-45-16-17 including rotor lid aerosol-tight	459.00	532.00



Eppendorf DNA LoBind Tubes

eppendorf

These tubes reduce the absorption of nucleic acids to the tube wall through a combination of special manufacturing technologies and selected polypropylene batches, this ensures nearly 100% recovery of DNA/RNA molecules without the need for a surface coating. DNA LoBind tubes are batch-tested and certified by an independent laboratory to be free from DNA, DNase, RNase, and PCR inhibitors and are ideal for sample preparation or long-term storage of nucleic acids in forensic, microarrays, NGS applications, and many others.

Key Features:

- ✓ LoBind material maximises sample recovery for improved assay results
- ✓ Certified free of DNA, DNase, RNase and PCR inhibitors (PCR clean)
- ✓ LoBind is available in tube, microplate and deepwell plate formats for easy up-scaling
- ✓ Hinged Safe-Lock lid prevents accidental lid opening during incubation
- ✓ Precise lid sealing for low evaporation rates during long term storage
- ✓ Rated up to 30,000 x g (25,000 x g for 2.0mL tube)



OVER
25%
OFF

Code	Description	Pack	Offer Price, £	Offer Price, €
F10292	DNA LoBind tubes 0.5mL PCR clean	250	14.75	17.11
F10294	DNA LoBind tubes 1.5mL PCR clean	250	8.10	9.40
F10296	DNA LoBind tubes 2.0mL PCR clean	250	9.71	11.26

Eppendorf Protein LoBind Tubes

Specifically designed for use in proteomics or other fields of protein research (antibodies, cell biology, peptide drugs etc.) where samples tend to be very small and sample recovery is vital. LoBind tubes improve recovery by reducing sample-to-tube binding - without the use of any additives or coatings.

- ✓ Minimised protein loss
- ✓ Free of surface coating e.g. silicone
- ✓ Free of DNA, DNase, RNase and ATP (PCR clean)
- ✓ Special polypropylene material manufactured under optimised processing conditions
- ✓ Safe-Lock lid
- ✓ Rated to 18,000 x g
- ✓ High degree of transparency



Code	Description	Pack	Offer Price, £	Offer Price, €
F10298	Protein LoBind tubes 0.5mL PCR clean	100	7.82	9.06
F10300	Protein LoBind tubes 1.5mL PCR clean	100	5.91	6.86
F10302	Protein LoBind tubes 2.0mL PCR clean	100	9.42	10.93

Eppendorf Tubes 5mL

eppendorf

The new 5.0mL Eppendorf Tube® is ideal for medium volume samples where you want to avoid larger conical screw cap tubes. Ease of sample access with a hinged lid helps ensure ergonomic operations whilst eliminating the risk of contamination whilst the conical shape means that the new tube is compatible with many existing adapters and racks. Supplied in a variety of formats including PCR Clean, Eppendorf BioPur® and DNA, Protein LoBind and Forensic DNA grade, an extensive range of centrifuge rotors and adapters are also available.



- ✓ Ergonomic single handed operation with hinged lid eliminates contamination risk
- ✓ Available with batch tested and certified purity
- ✓ Suitable for centrifugation up to 25,000 x g
- ✓ Suitable for use and storage from -86 to 80°C, 100°C with clip
- ✓ High quality transparent polypropylene free of plasticisers, release agents and biocides

Code	Description	Pack	Offer Price, £	Offer Price, €
F10304	Eppendorf tubes 5.0mL starter pack 400 tubes PCR clean 2 tube-racks 8 adapters for rotors with bore for 15mL conical tubes	EACH	77.50	90.00
F10306	Eppendorf protein LoBind tubes 5.0mL PCR clean 2 bags of 50 tubes each	100	23.80	27.61
F10308	Eppendorf DNA LoBind tubes 5.0mL PCR clean 4 bags of 50 tubes each	200	30.22	35.06

Eppendorf Conical Tubes

DNA LoBind tubes improve recovery of nucleic acids by reducing their absorption to the tube wall. A combination of special manufacturing technologies and selected polypropylene batches ensures nearly 100% recovery of DNA/RNA molecules-without surface coating to eliminate the risk of sample contamination. DNA LoBind tubes are batch-tested and certified by an independent laboratory to be free from DNA, DNase, RNase and PCR inhibitors. Eppendorf DNA LoBind tubes are ideal for sample preparation of long-term storage of nucleic acids in forensic, microarrays, NGS applications, and many others.



- ✓ Free of surface coating (e.g. silicone) to minimise the risk of sample interference
- ✓ Lot-certified PCR clean purity grade: free of human DNA, DNAase, RNase and PCR inhibitors
- ✓ Available in tube, microplate, and deepwell plate formats for easy-up scaling
- ✓ Precise lid sealing for minimal evaporation rates in tube format
- ✓ Rated up to 30,000 x g centrifugation speed for molecular biology applications

Code	Description	Pack	Offer Price, £	Offer Price, €
F10310	Eppendorf conical tubes 15mL DNA LoBind pyrogen- DNase- RNase- and DNA-free 4 bags of 50 tubes each	200	37.60	43.62
F10312	Eppendorf conical tubes 50mL DNA LoBind pyrogen- DNase- RNase- and DNA-free 4 bags of 50 tubes each	200	45.11	52.33

Thermo Scientific SL8 / SL8R / SL40 / SL40R Refrigerated Benchtop Centrifuges

Thermo
SCIENTIFIC

The Thermo Scientific™ refrigerated bench top centrifuges offer exceptional capacity, ergonomic features and value. Featuring proprietary innovations for safe, simple and comfortable daily operation.

- ✓ Thermo Scientific™ Auto-Lock™ rotor exchange in as little as 3 seconds delivers trouble-free rotor installation
- ✓ Thermo Scientific™ ClickSeal™ lids for glove-friendly, one-handed operation for biocontainment sealing options
- ✓ Great range of rotors and rotor accessories - sold separately (see SLS website for details)



30%
OFF
list price

Code	Description	Max Capacity	Max Speed, RPM (Fixed Angle Rotors)	Dims, w x d x h, mm	Offer Price, £	Offer Price, €
F10462	SL8R without rotor	4 x 145mL (with TX-150 rotor)	17,850	460 x 670 x 320	3,326.00	3,858.00
F10464	SL8 without rotor	4 x 145mL (with TX-150 rotor)	16,000	370 x 480 x 310	1,411.00	1,637.00
F10474	SL40R without rotor	4 x 1000mL (with TX-1000 rotor)	15,200	745 x 670 x 360	5,283.00	6,128.00
F10476	SL40 without rotor	4 x 1000mL (with TX-1000 rotor)	15,200	565 x 670 x 360	3,280.00	3,805.00

Accessories

Code	Description	Offer Price, £	Offer Price, €
F10466	Cell culture rotor package with biocontainment for SL8 / SL8R	1,136.00	1,318.00
F10468	High capacity cell culture rotor package for SL8 / SL8R	1,376.00	1,596.00
F10470	Clinical rotor package for SL8 / SL8R	1,437.00	1,667.00
F10472	MicroClick 24 x 2mL fixed angle microtube rotor for SL8 / SL8R	725.00	841.00
F10478	TX-1000 4 x 1000mL swinging bucket rotor for SL40 / SL40R	1,010.00	1,172.00
F10480	TX-1000 buckets (set of 4) for SL40 / SL40R	1,010.00	1,172.00
F10482	50mL conical adaptors (Set of 4) for SL40 / SL40R	367.00	426.00
F10484	15mL conical adaptors (Set of 4) for SL40 / SL40R	290.00	336.00
F10486	Plate adaptors for SL40 / SL40R	290.00	336.00
F10488	Carbon fibre 6 x 100mL rotor for SL16 / SL16R	1,703.00	1,975.00

**SPECIAL
PRICE**



Grant Advanced Aspirator with FREE MA-8 (8 Channel Adaptor Kit) Worth €64

2 YEARS

Grant

All in one aspirator system with a 2L trap flask designed for aspiration or removal of alcohol, buffer and liquid from reaction vessels during DNA/RNA purification or other macromolecule reprecipitation techniques. All in one system with integrated pump. Trap flask volume 2L. Fitted with hydrophobic microbiological filter. Liquid level sensor detects excess liquid and prevents overflow.

Vacuum pressure:

-200 to -800mbar (adjustable)

20%
OFF
list price

Worth €64

FREE MA-8
(8 Channel
Adaptor Kit)



Code	Offer Price, £	Offer Price, €
F10400	795.00	922.00

AZOMAX™/SLS Select



Disinfectant Wipes and Spray

Disinfectant Wipes and Spray

SPECIAL
PRICE

Code	Description	Offer Price, £	Offer Price, €
F10630	SLS Select alcohol surface wipe 200 x 220mm - Tub	4.00	4.64
F10632	AZOMAX™ disinfectant spray 500mL	4.00	4.64

Grant Aqua Pro Orbital-Linear Shaking Water Bath

3 YEARS

Grant

The Aqua Pro shaking water bath range offers exceptional temperature performance and usability. With three bath models to choose from, there is a shaking water bath to meet basic and demanding applications in research, industry and the life sciences. Includes UK & EU cord sets and clear polycarbonate lid. Universal tray included as standard, other shaking trays sold separately.

- ✓ Temperature Range ambient +5 to 99°C
- ✓ Digital Control / LED Display
- ✓ Linear Shaking Speed 20-200 rpm
- ✓ Countdown timer (1-999 mins)
- ✓ Soft start and extremely quiet during operation
- ✓ Front located drain tap
- ✓ User defined high temperature alarm and cut-off

25%
OFF
list price



Code	Offer Price, £	Offer Price, €
F10522	1,760.00	2,042.00

Stuart Merit Water Still

An economically priced water still producing up to 4 litres/hour of quality distillate. Plumbing connections to the condenser are by plastic screwthread connectors for quick release and ease of operation. 3KW heater protected by two thermal cutouts in the event of water failure. Weight 6Kg.

stuart®

35%
OFF
list price



Code	Offer Price, £	Offer Price, €
F10398	563.00	653.00

SLS Lab Pro Dual Type I and II Water Purification System



SLS water purification system combines ultrapure and DI water in one unit saving you money and space. Type 2 water is ideal for buffer, reagent & media preparation, sample dilution and general chemistry. Type 1, dispensed direct from the unit or using an optional remote dispenser, is perfect for the most sensitive applications such as cell & tissue culture, molecular biology, electrophoresis, chromatography & spectroscopy and with ultra-filtration included the PurA-Q+ is ideal for RNase/DNase free work too.



**20%
OFF**
list price

FREE
tank plus
installation

Worth up to €1005

- ✓ Two water qualities from one unit
- ✓ Dispenses ultrapure water up to 2 litres/minute
- ✓ Type 2 deionised water dispensed at up to 10 litres/hour
- ✓ Small footprint w x d x h, mm 490 x 290 x 670 (730mm to top of dispense tube)
- ✓ Main unit wall, bench or reservoir mounted
- ✓ Choice of Type 2 storage reservoir 30, 60 (tank required to complete system)
- ✓ Variable speed motor saves energy when not in use – reducing running cost and noise
- ✓ Novel recirculation loop extends consumable life
- ✓ TOC water quality monitoring (ppb 1-5)
- ✓ Ultra-filtered versions nuclease free and endotoxin <0.001EU/mL
- ✓ Built-in boost pump means low feed pressure (0.1 bar min.) is not an issue
- ✓ Consumables changed in seconds - first consumables pack included

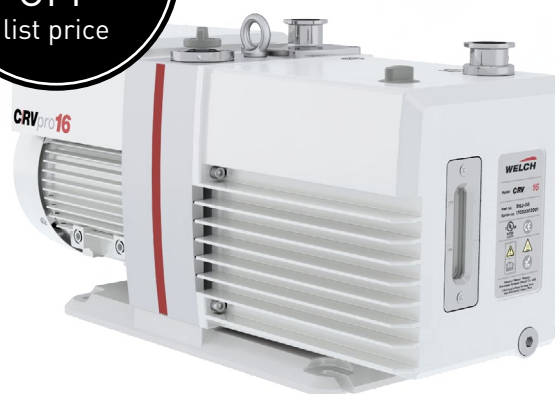
Code	Description	Offer Price, £	Offer Price, €
F10586	Dual Type 1 and 2 system with Free 30L tank	6,166.00	7,153.00
F10588	Dual Type 1 and 2 system with Free 60L tank	6,166.00	7,153.00

Welch CRVpro Vacuum Pumps

Providing reliability for stable operation and long product lifespan. A larger oil chamber reduces the risk of chemical attacks and oil breakdown by diluting aggressive chemicals. Cool running characteristic slows down any corrosion process. A chemical resistant coating protects the stationary components. The CRVpro enables extended oil change intervals for less maintenance costs. Less oil consumption is a result of the cool running operation and the extended usability of oil based on a high dilution effect. The low weight, flexible handle and compact pump design makes the rotary vane pump a portable and flexible partner in laboratory and industrial applications. Low sound level ensures that users work in calm surroundings.

- ✓ Cool running operation for less oil consumption
- ✓ Coated oil case to slow metal corrosion
- ✓ Large oil case to reduce the risk of chemical attacks
- ✓ DN 16 KF inlet / exhaust flanges (DN 25 KF for CRVpro16)
- ✓ Anti-suck back valve
- ✓ Low noise level
- ✓ Forced oil lubrication
- ✓ Gas ballast valve to allow pumping of condensable vapours
- ✓ Comes with 2 litres of Welch Directorr Premium oil
(3 litres for CRVpro 16, 24, 30)

**25%
OFF**
list price



Code	Description	Offer Price, £	Offer Price, €
F10406	Welch CRVpro 4 2-stage rotary vane pump	1,088.00	1,262.00
F10408	Welch CRVpro 6 2-stage rotary vane pump	1,249.00	1,449.00
F10410	Welch CRVpro 8 2-stage rotary vane pump	1,658.00	1,923.00
F10412	Welch CRVpro 16 2-stage rotary vane pump	2,007.00	2,328.00
F10414	Welch CRVpro 24 2-stage rotary vane pump	2,513.00	2,915.00
F10416	Welch CRVpro 30 2-stage rotary vane pump	3,038.00	3,524.00

SI Analytics pH Meter Lab 845 Set / BL25pH

SI Analytics
a xylem brand

A user friendly design, intuitive operation and robust aluminium housing renders the Lab 845 perfect for training and routine purposes. Set includes stand, power supply, BlueLine 25 pH sensor and DIN buffers in ampules (6 pieces). With USB interface, data logger (up to 4000 data sets: date, time, main value, secondary value, measuring temperature) with adjustable interval, numeric password security, configurable time off set-up and graphical LCD display (background lit), 0.01 pH resolution, 3-point calibration.

**25%
OFF**
list price



Code	Offer Price, £	Offer Price, €
F10402	323.00	375.00

Brady Laboratory Printer Kits



BMP51 Laboratory Printer kit

The BMP™51 Label Maker from Brady offers crisp printing, easy formatting, convenient label sizes, and the portability required for laboratory identification. Cartridges and ribbons can be changed in seconds with drop-in cartridges that have both the label material & ribbon inside whilst smart cell technology enables the printer to automatically format the label - drop in a cartridge and the printer calibrates the rest. Print speeds are up to 25.40mm per second and a self-cleaning durable built-in cutter can cut through any material with ease and grips the label until you need it. LabelMark™ Labelling Software enables the printer to print bar code symbologies; time/date stamps; imported graphics; automatic data serialisation and more.



- ✓ This printer ships in a hard case with a Rechargeable Lithium Ion Battery, USB Cable, AC adaptor with power cord, Product CD, Brady Printer Drivers CD, Quick Start Guide, a Bluetooth network card, a Brady Workstation Product & Wire Identification Suite, cartridges

Code	Offer Price, £	Offer Price, €
F10376	583.00	676.00

BBP33 Laboratory Printer kit

The BBP33 label printer is a hassle-free label printer that prints on the first label and does not require material calibration. Smart chip supplies automatically set up the label type within the Brady software. Drop-in ribbon and label cartridges ensure fast and effortless material changes.



- ✓ Easy-to-load material cartridges without calibration (approximately 15-20 seconds)
- ✓ Prints from 0.5" up to 4" wide labels
- ✓ Thermal Transfer Printer
- ✓ Print Resolution: 300 dpi
- ✓ This label printer kit ships in a cardboard box with a power cord, a USB cable, a drivers CD, a cleaning kit, a product CD, a quick start guide, 3 rolls of labels, 2 ribbons, and a Brady Workstation Product and Wire ID Suite CD

Code	Offer Price, £	Offer Price, €
F10378	1,362.00	1,580.00

PCRmax Alpha Cyclers

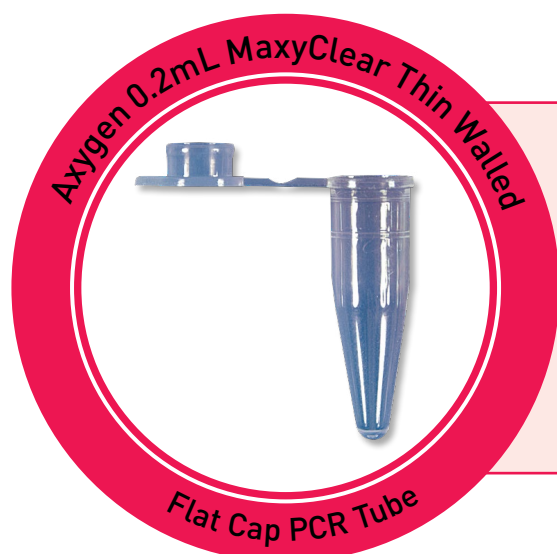


The PCRmax Alpha Cyclers are compact and feature driven entry level PCR machines with ease of use and performance at their core. Available in 1 block or 2 block chassis, the Alpha Cycler interface is Android based, with a large 7" HD touchscreen for responsive control of the software. Ideal for multi-user environments, users can make any USB device their own login key allowing them to use multiple systems in different locations like a personal unit. Programs can be easily stored, transferred, protected and locked while running.



- ✓ **Alpha cycler 2** - Dual blocks are fully independent and can run different protocols
- ✓ **Alpha track** - Remote monitoring can be set to check system performance every run and notify end user of performance impacting abnormality
- ✓ **Active sample cooling** - For sharper amplification and minimal non-specific amplification
- ✓ **Program Wizard** - Generate a protocol specific to your sequence, template source and amplicon length in seconds or optimise your protocol. Report generated on run conditions and state following completion of protocol
- ✓ **Gradient** - Allowing for simplified temperature optimisation, no matter the block chosen
- ✓ **96/384 Well Formats** - Flexibility for any scale and user needs

Code	Description	Offer Price, £	Offer Price, €
F10386	Alpha cycler 1 chassis with a single 96 well block	2,556.00	2,965.00
F10388	Alpha cycler 1 chassis with a single 384 well block	2,556.00	2,965.00
F10390	Alpha cycler 2 chassis with two 96 well blocks	4,463.00	5,177.00
F10392	Alpha cycler 2 chassis with two 384 well blocks	4,463.00	5,177.00
F10394	Alpha cycler 2 chassis with one 96 and one 384 well blocks	4,463.00	5,177.00



Axygen 0.2mL MaxyClear PCR Tube

Supplied in packs of 1000

Code	Offer Price, £	Offer Price, €
F10672	23.00	26.68

SPECIAL OFFER
50% OFF

Roche PCR Reagents



When the success of your PCR depends on top-performing reagents, turn to the experts in PCR. Roche's proven reagents ensure success by delivering the performance you want. Roche PCR products offer a variety of formulations, tailored to your needs. Available as a standard enzyme, enzyme blends (enzyme and buffer), dNTPacks (enzyme, buffer, dNTP set), or as a convenient Master Mix.



For life science research only. Not for use in diagnostic procedures.

Code	Description	Offer Price, £	Offer Price, €
F10524	Taq DNA Polymerase 5 U/μL for 200 Reactions	29.11	33.77
F10526	Taq DNA Polymerase 1 U/μL pkg 250 U	66.30	76.91
F10528	Taq DNA Polymerase dNTPack 5 U/μL for 200 Reactions	29.11	33.77
F10530	Taq DNA Polymerase dNTPack 1 U/μL for 500 Reactions	66.30	76.91
F10532	PCR Mastermix	254.00	295.00
F10534	FastStart Taq DNA Polymerase 5 U/μL for 50 Reactions	53.13	61.63
F10536	Faststart Taq DNA Polymerase dNTPack 5 U/μL for 50 Reactions	29.11	33.77
F10538	Faststart PCR Mastermix 2 x 1.25mL for 100 Reactions	72.25	83.81
F10540	Aptataq Fast DNA Polymerase 1U/μL pkg 100 U	36.13	41.91
F10542	Aptataq Fast PCR Master 1 x 400μL for 100 Reactions	42.29	49.06

PCR Application	Routine PCR	Fast PCR	Hot Start
Your Enzyme of Choice:	Taq DNA Polymerase	AptaTaq Fast DNA Polymerase	FastStart™ Taq DNA Polymerase
Experience	Consistency	Speed	Specificity
Amplicon Size	up to 3 kb	up to 500 bp	up to 3 kb
Specificity	✓✓	✓✓✓✓	✓✓✓✓
Sensitivity	✓✓	✓✓	✓✓✓✓
Robustness	✓✓	✓✓✓✓	✓✓✓
Accuracy vs. Taq	1x	1x	1x
Carryover Prevention	yes	yes	yes
Units/50 μL	1.25	2/20 μL	2
Molecular Cloning	TA Cloning	TA Cloning	TA Cloning

Cleaver multiSUB™ miniONE

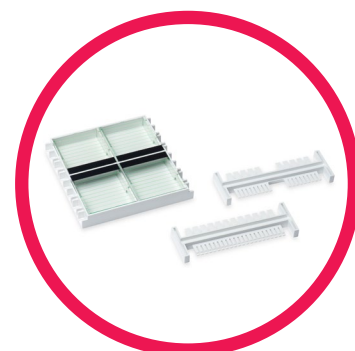
The multiSUB™ miniONE is an all in one horizontal electrophoresis unit. Featuring a built in power supply with voltage options of 35V, 50V and 100V, the miniONE is a versatile system suitable for a wide range of applications. A built in timer for runs from 0-99 minutes means you can set up your parameters and leave the system to complete the run automatically without fear of losing bands. The system comes complete with 2 gel casters for wide and mini gels as well as reversible combs for high throughput or high sample volume.



- ✓ All in one horizontal electrophoresis system
- ✓ In built power supply with 35V, 50V and 100V settings
- ✓ Timer function for runs from 0 – 99 minutes
- ✓ 2 gel sizes and reversible comb options

Code	Description	List Price, £	List Price, €
ELE3400	MultiSUB™ miniONE electrophoresis system with built-in power supply including large and small gel trays and gel casters, full and double length combs	390.00	452.00

Code	Description	List Price, £	List Price, €
ELE3402	Full length combs for miniONE large gel tray	23.40	27.14
ELE3404	Double comb for miniONE small gel tray	23.40	27.14
ELE3406	MultiSUB™ miniONE gel caster large	25.36	29.42
ELE3408	MultiSUB™ miniONE gel caster small	25.36	29.42
ELE3410	MultiSUB™ miniONE large gel tray 110mm × 60mm	23.40	27.14
ELE3412	MultiSUB™ miniONE small gel tray 54mm × 60mm	19.50	22.62



Lonza SeaKem LE Agarose



Lonza SeaKem LE Agarose 500g

Code	Offer Price, £	Offer Price, €
F10608	153.00	177.00

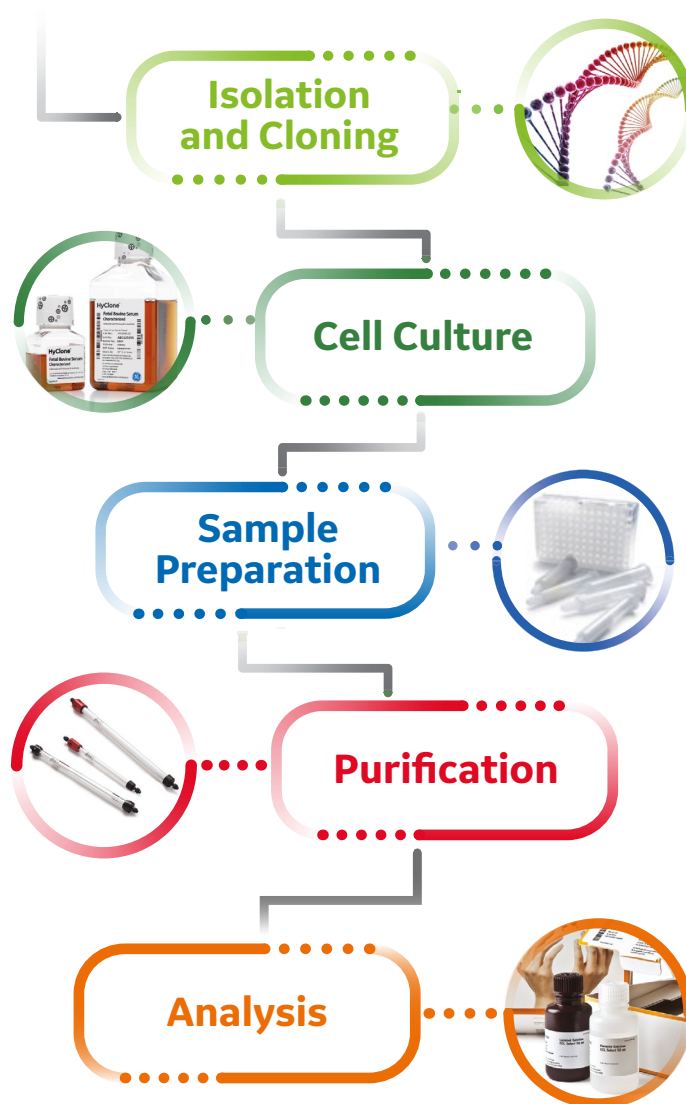
OVER
70%
OFF

GE Healthcare - Protein Workflow Simplified

Below are some examples of great savings available through SLS. Please contact your local SLS rep to discuss your protein workflow. You might also be able to get similar savings on other products by switching to GE.



Distributor
GE Healthcare



Code	Description	Pack	Offer Price, £	Offer Price, €
F10700	GE Healthcare illustra NAP-5 Columns	50	* 225.00	* 261.00
F10704	GE Healthcare Sera-Mag SpeedBead blocked Streptavidin particles 1µm 1% solids 5 mL 0.05% Na azide	5mL	* 495.00	* 574.00
F10706	GE Healthcare Transfx-C (for CHO cells)	1L	34.80	40.37
F10708	GE Healthcare Transfx-H (for HEK293 cells)	1L	34.85	40.43
F10720	Amersham ECL Start Western blotting detection reagent for 2000cm ² membrane	EACH	* 69.00	* 80.00
F10722	Amersham Protran 0.45µm NC 300mm x 4m roll	EACH	153.00	177.00

* Buy 2 packs to receive the promotional discount

Motic Panthera E Microscopes

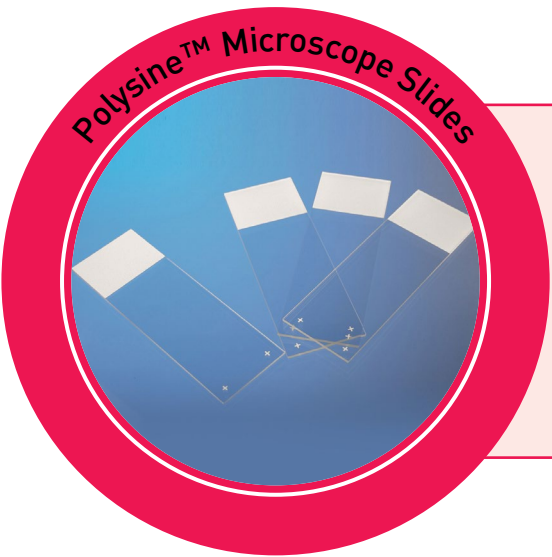
The Panthera E is equipped with SC Plan Achromatic Infinity optics. These objectives combined with N-WF widefield eyepieces with a 20mm field of view deliver unmatched image quality and definition. The Panthera E stand features a reversed 4-fold nosepiece and is equipped with a rackless stage. Illumination is provided by an LED light source in a Fixed Koehler setup.

These microscopes are supplied with 4X, 10X, 40X objectives. The 4th position 100X objective is available to purchase as an optional extra.



**SPECIAL
PRICE**

Code	Description	Offer Price, £	Offer Price, €
F10380	Model E Binocular with 4X, 10X, 40X objectives	668.00	775.00
F10382	Model E Trinocular with 4X, 10X, 40X objectives	774.00	898.00
F10384	Optional 100X objective	93.00	108.00

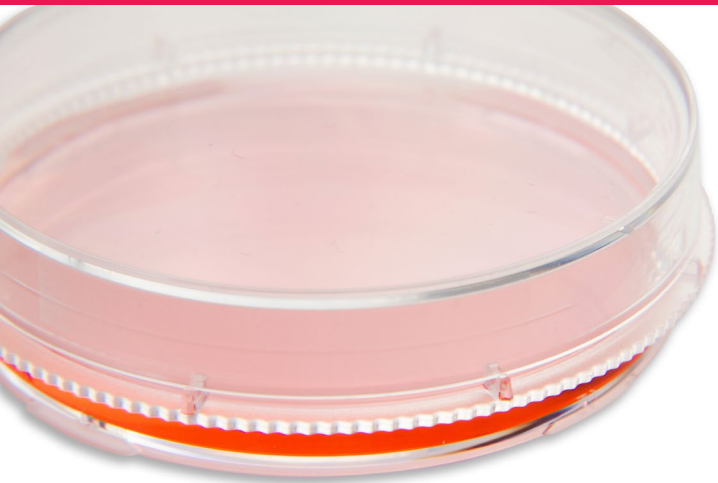


Polysine™ Microscope Slides

Supplied in packs of 72

Code	Description	Offer Price, £	Offer Price, €
F10674	75 x 25 x 1mm	15.75	18.27

SPECIAL OFFER
45%
OFF



50%
OFF
list price

Thermo Scientific™ Nunc™ EasYDish™ Cell Culture Dishes

Thermo Scientific™ Nunc™ EasYDish™ cell culture dishes are designed to improve the handling, stacking, and transporting of cell cultures in your lab. The bevelled grip ring is easy to hold and stays secure in your gloved hand.

The proprietary notch design allows for optimal ventilation for cell growth. The raised lip on the outer edge of the lid facilitates stable stacking of multiple dishes for secure transportation. The four orientation marks on the bottom of the dish enable quickly locating cells under a microscope. Nunc EasYDish cell culture dishes come in four sizes (35mm, 60mm, 100mm, and 150mm) along with a resealable package to maintain the cleanliness of opened packs.

Code	d x h, mm	Pack	Offer Price, £	Offer Price, €
F10506	35 x 13	500	94.00	109.00
F10508	60 x 16	280	52.50	61.00
F10510	100 x 17	150	50.50	58.58
F10512	100 x 21	240	76.00	88.00
F10514	150 x 21	80	70.50	82.00

12.5mm x 12.5mm



SPECIAL OFFER

70%
OFF

Labelling Tape (Whilst stocks last)

Code	Colour	Offer Price, £	Offer Price, €
F10570	Black	4.00	4.64
F10572	Blue	4.00	4.64
F10574	Red	4.00	4.64
F10576	Lime	4.00	4.64
F10578	Gold	4.00	4.64
F10580	White	4.00	4.64
F10582	Salmon	4.00	4.64
F10584	Copper	4.00	4.64



CORNING

Break the 3D barrier Get there fast with Corning.

Are you just getting started in 3D cell culture? Looking for proven ways to scale up? Or making the move to high throughput screening? Whatever your challenge, Corning can help you break through the barriers to create more *in vivo*-like environments and predictive models. For more than 25 years, Corning has delivered innovations that have advanced the science of 3D cell culture. We pioneered the development of novel tools providing easier access to *in vivo*-like 3D models, such as **Corning® spheroid microplate, Corning® Matrigel® matrix and Transwell® permeable supports**, and we continue to support you with a diverse and evolving portfolio of innovative 3D cell culture products, solutions, protocols, and expertise. Corning is committed to working with you in critical areas like cancer biology, tissue engineering, and regenerative medicine – to help you bring safe, effective drugs and therapies to market in less time with greater certainty. Find out how Corning can help you conduct more biologically relevant research and better predict how your next discovery will behave in the real world.

VESSELS SURFACES MEDIA

CORNING 3D CELL CULTURE

© 2018 Corning Incorporated. All Rights Reserved.

Visit [corning.com/3D](https://www.corning.com/3D) to learn more.

Corning Cell Counter

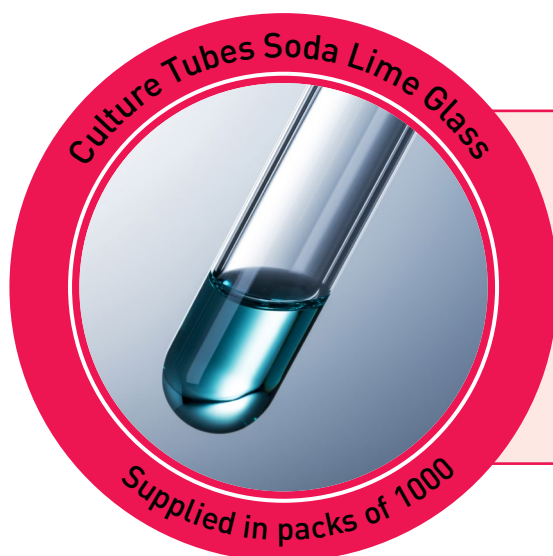
Corning Cell Counter can perform a single cell count in less than three seconds. With traditional systems, the image analysis algorithms must be processed on a relatively small on board computer. The cell counter, utilising the CytoSMART™ cloud app, can process the images in the Microsoft Azure Cloud Computing Platform. This cloud computing ability means that it can analyse the images faster than any existing on board processor can.

The cell counter uses a sophisticated Deep Neural Network for cell detection. This state-of-the-art image analysis software allows for optimal accuracy. When Trypan Blue is added the system can also detect cell viability. The cell counter can detect clusters of cells, which leads to accurate cell counts of “highly concentrated samples” (up to 1×10^7 cells/mL). The cell counter is easy to use. Simply connect the Cell Counter to your computer or tablet and start the CytoSMART Cloud App. Place the loaded counting chamber on the stage. Focus on your cells and press the Count Button. The simplicity of the Cell Counter allows anyone working in your lab to easily count cells without the need of extensive training.

- ✓ **Free Corning P20 pipettor**
- ✓ **Free 960 x Axygen filter tips**



Code	Offer Price, £	Offer Price, €
F10100	2,605.00	3,022.00



Culture Tubes Soda Lime Glass 13 x 100mm

Code	Offer Price, £	Offer Price, €
F10606	32.19	37.34

SPECIAL OFFER

55%
OFF

Synbiosis aCOLyte 3 HD Automated Colony Counter



A DIVISION OF THE SYNOPTICS GROUP

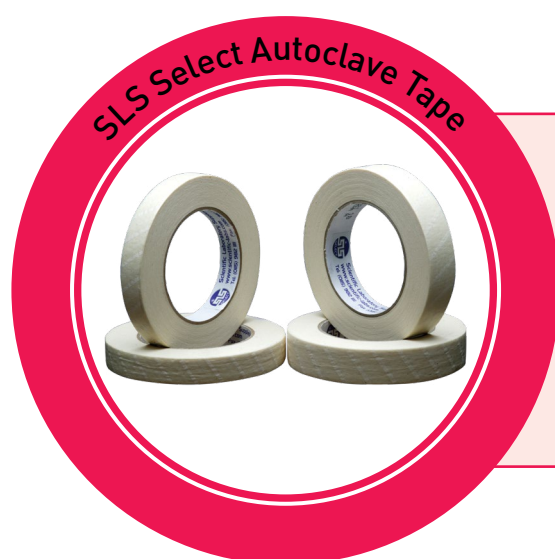
The aCOLyte 3 HD is the latest affordable, automated colony counting device from Synbiosis. The aCOLyte 3 HD is available in one configuration and features new simple-to-use software that greatly improves efficiency, reliability and productivity over previous models. The new aCOLyte 3 HD software uses a powerful new algorithm for colony counting on pour and spiral plates which until now were only found on the advanced ProtoCOL 3 models.

Plates are automatically counted with results directly transferred to Excel or Open office. The new style aCOLyte 3 HD accepts plates up to 90mm diameter.

Lighting is provided by LEDs mounted above and below the sample area for both transmitted and epi illumination. A detachable screen can be used to eliminate strong ambient light if required. aCOLyte 3 HD can be used with any conforming laptop or desktop PC and connects simply by using a USB port.



Code	Offer Price, £	Offer Price, €
F10516	2,058.00	2,387.00



SLS Select Autoclave Tape

Supplied in singles

Code	Description	Offer Price, £	Offer Price, €
F10676	19mm x 50m	3.60	4.18
F10678	24mm x 50m	3.60	4.18

**SPECIAL
OFFER**

Astell Benchtop and Compact Autoclaves with FREE Load Sensed Timing Option



These autoclaves are ideal for laboratory sterilisation procedures with the option of a manual water-fill (Classic models) or integral reservoir (Autofill models). They require no plumbing and operate from a standard single phase power supply. The new touchscreen controller ensures ease of operation for new users, whilst retaining the flexibility and diagnostic capability favoured by lab managers and technical personnel.

**+10%
OFF**

**FREE Load
Sensed Timing
Option
(Worth €423)**



Front Loading, Benchtop

Code	Description	Volume, L	Offer Price, £	Offer Price, €
F10358	Classic	33	5,238.00	6,076.00
F10360	Classic	43	6,075.00	7,047.00
F10362	Classic	63	7,164.00	8,310.00
F10364	Autofill	33	5,937.00	6,887.00
F10366	Autofill	43	6,840.00	7,934.00
F10368	Autofill	43	7,947.00	9,219.00

Top Loading, Floorstanding

Code	Description	Volume, L	Offer Price, £	Offer Price, €
F10370	Autofill	63	8,195.00	9,506.00
F10372	Classic	63	7,164.00	8,310.00

Low Power Eco-Drying Cabinet



In answer to a growing demand to reduce carbon footprints, LTE Scientific has developed a new range of sustainable eco-drying cabinets which will significantly reduce power usage (and therefore running costs) when compared to a standard glassware drying cabinet.

Complete with digital temperature controller and electronic 7-day timer, the eco-drying cabinet range is designed to offer market leading operational efficiencies over standard drying cabinets, yet remain economically priced. In empty chamber tests, DRY1500 used only 0.1kW to heat from ambient 22°C to 60°C, and then only 0.125kWh to maintain that temperature.



- ✓ Energy savings of at least 50% when compared to standard glassware drying cabinets
- ✓ Insulated on 5 sides
- ✓ Low heat output
- ✓ Digital PID temperature control
- ✓ Programmable 7-day timer
- ✓ Anti-bacterial epoxy coating to exterior
- ✓ Max Temp - 80°C

Code	Air Circulation	Standing	Volume, L	Ext Dims, w x d x h, mm	List Price, £	List Price, €
DRY1500	Natural convection	Bench	100	870 x 375 x 630	1,050.00	1,218.00
DRY1502	Natural convection	Bench	180	1090 x 398 x 760	1,450.00	1,682.00
DRY1504	Natural convection	Floor	445	660 x 1760 x 620	3,300.00	3,828.00
DRY1506	Fan circulated	Floor	445	660 x 1760 x 620	3,457.00	4,010.00
DRY1508	Fan circulated	Floor	900	660 x 1760 x 1180	4,750.00	5,510.00

Memmert Climate Chamber ICHeco



memmert
Experts in Thermostatics

Climate-friendly and powerful, the ICHeco climate chamber for the stability testing of pharmaceuticals, cosmetics or food works with climate-neutral CO₂ (R744) as refrigerant. Memmert is thus initiating the environmentally-friendly future of compressor-cooled temperature control appliances. Furthermore, the ICHeco scores with its unique uniformity of temperature and humidity. Via an air jacket around the hermetically sealed work area, both heat and cold are quickly and extensively introduced into the climate chamber over four sides. Icing over of the cooling appliance and sample drying are successfully avoided.



- ✓ Digitally controlled active humidification and dehumidification from 10 to 80 % rh
- ✓ Temperature range from +10°C to + 60°C
- ✓ 1 model variant - TwinDISPLAY

- ✓ Double doors as standard: Prevention of contamination and drops or rises in temperature with an optimal view of the chamber load through wide-area interior glass doors

Code	Description	Volume, L	List Price, £	List Price, €
CHA8500	Without Light	256	11,861.00	13,759.00
CHA8502	With Light	256	14,634.00	16,975.00
CHA8504	Without Light	749	15,785.00	18,311.00
CHA8506	With Light	749	18,678.00	21,666.00

Haier Biomedical Energy Saving Class II Biological Safety Cabinet



Haier Biomedical
Intelligent Protection of Life Science

The Haier Biomedical Energy Saving Class II biological safety cabinet provides an effective and greener solution in operator, product and environmental protection. This biosafety cabinet is BS EN 12469 and TUV Certified. Energy efficient Class II microbiological safety cabinet complete with stand, two patented IP44 rated waterproof power sockets, four service ports and UV lamp for sterilisation.

- ✓ **Energy Efficient** – with DC and EC fans and longer last LED lights which reduce energy consumption
- ✓ **Double HEPA Filters** – two highly efficient HEPA dual out filters reduce the risk of lab pollution
- ✓ **Side Glass Windows** – glass wall allows more natural light in, reducing optimal stress caused by artificial lighting, as well as maximising the usable space
- ✓ **Maximum comfort** – ergonomic design ensures maximum comfort and alleviates operator fatigue

Delivery & installation charges not included.

**39%
OFF
list price**



Code	Offer Price, £	Offer Price, €
F10404	4,999.00	5,799.00



SHIELDskin Nitrile Gloves

Supplied in packs of 90

Code	Description	Offer Price, £	Offer Price, €
F10564	Small	9.76	11.32
F10566	Medium	9.76	11.32
F10568	Large	9.76	11.32

SPECIAL OFFER
**60%
OFF**

Jenway 7205 UV/Visible Scanning Spectrophotometer

2
YEARS

JENWAY

The 72 Series Spectrophotometers use diode array technology to produce exceptionally fast results. Model 7200 is a fast scanning visible diode array spectrophotometer with a tungsten lamp that measures a range of 335 to 800nm. Leveraging a flash xenon lamp. Model 7205 measures from 800nm down to 198nm, with an exceptionally fast scan speed - measuring the entire wavelength range in 3 seconds!

With a large colour touchscreen user interface on both instruments, this range is simple to set up and navigate. Results can be saved to USB memory stick or printed using the optional printer. This spectrophotometer has measurement modes for photometrics, concentration, optical density, quantitation, spectrum scanning and kinetics. These spectrophotometers are not affected by ambient stray light and so can be used with the lid open. Both lamps are press to read which increases the lamps lifespan. Supplied with a 10 x 10mm cuvette holder fitted as standard.

The clever design of these instruments ensures that they are compatible with the existing passive accessories from the 63, 73 and 67 series range.

**30%
OFF
list price**



- ✓ Scanning diode array technology
- ✓ Colour touchscreen navigation
- ✓ Fast scan speed
- ✓ Small footprint and very lightweight (2.8kg)
- ✓ Results saving to USB memory stick
- ✓ Optional heated cell accessories available - Temperature control of 37°C +/- 5°C, Resolution of 0.5°C
- ✓ Tungsten Lamp on model 7200 is user changeable
- ✓ 2 year warranty (1 year on the tungsten lamp)

Code

Offer Price, £

Offer Price, €

F10396

1,505.00

1,746.00

Lovibond MD 200 COD Vario Photometer Setup with FREE Pack of 25 COD Vials

The Lovibond® COD Vario Setup allows precise COD measurement with minimum effort. Vials are available to cover all applications from final, treated, raw and trade effluent. The MD 200 Photometer will measure all three ranges and has an easy-to-use four button keypad. It is water and splash resistant and has a backlit screen for accurate result reading. The MD 110 Photometer provides the extra capability of data storage and bluetooth download. The system can also be supplied with the MD 600 series photometer to allow the easy expansion of testing regimes.

- ✓ Includes Photometer, RD 125 reactor, vials and accessories
- ✓ COD vial ranges 0-150, 0-1500, 0-15000mL/L



- ✓ Data storage and Bluetooth download
- ✓ Expandable with MD 600 series photometer

Code	Offer Price, £	Offer Price, €
F10558	931.00	1,080.00

Lovibond BD 600 BOD System for 6 with Heater/Cooler Cabinet

The upgraded lovibond BD 600/606 are new manometric BOD system with remote control functionality, enabling adjustments without the need to open the door of the thermostatic cabinet. The system has been specifically designed for use in laboratories, treatment and purification plants with automatic BOD measurement at customisable intervals. Results are continuously monitored and displayed on the large screen with easy-to-monitor graphical representation of measured values. Flexibility is paramount with individual programming of each of the six sample bottles and data transfer via USB or SD card.

- ✓ Real time BOD values
- ✓ User friendly
- ✓ 1 to 28 day measurement periods
- ✓ USB and SD card interface
- ✓ Conforms to APHA, AWWA, WEF standard methods 5210 D



- ✓ Conforms to H55 as a supplement to EN 1899-2
- ✓ Heater/Cooler Cabinet temperature range 2°C to 40°C, continuously adjustable in steps of 0.1°C

Code	Offer Price, £	Offer Price, €
F10560	2,483.00	2,880.00

Tecan Infinite F50 Absorbance Plate Reader



The Infinite F50 and Infinite F50 Robotic absorbance plate readers, together with Magellan data analysis software, are ideal solutions for photometric measurements of ELISAs and kinetic assays in the 400 to 750nm wavelength range. The systems' innovative design combines eight measurement channels with long-life LED lamps for fast parallel reading and minimal maintenance costs.

20%
OFF
list price



- ✓ Ideal for absorbance-based ELISAs, kinetic and multi-label reading
- ✓ Ready for qualitative and quantitative data analysis using Magellan data analysis software
- ✓ Magellan's example files and tutorials enable you to get started easily
- ✓ 405nm, 450nm, 492nm and 620nm filters included
- ✓ Eight-channel optics for fast reading
- ✓ Reference channel for optimised light intensity
- ✓ Long-life LED lamps offer 10 times longer maintenance-free operation than conventional halogen lamps
- ✓ Two year warranty and tested reliability of >100,000 plates
- ✓ Linear plate shaking

Code	Description	Offer Price, £	Offer Price, €
F10724	Infinite F50, including 405nm, 450nm, 492nm & 620nm filters and Magellan Software	3,458.00	4,011.00

Tecan Sunrise Absorbance Plate Readers

3 YEARS

TECAN.

The Sunrise absorbance reader, complemented by Tecan's Magellan™ universal reader control and data analysis software add-on, is an ideal solution for a range of applications, such as ELISAs, enzyme kinetics, cell viability studies, veterinary assays and many more. It supports a broad wavelength range – from 340 to 750nm – and can measure an entire 96-well plate in less than six seconds, ensuring it is ready to meet the needs of routine diagnostic and research labs.

20% OFF
list price



- ✓ Ideal for colorimetric ELISAs, kinetic assays and agglutination readings
- ✓ Temperature control option for enzyme kinetics
- ✓ Tunable wavelength option for greater flexibility and wavelength scanning
- ✓ Advanced 12-channel optics for fast results
- ✓ Microplate shaking capability

Code	Description	Offer Price, £	Offer Price, €
F10726	Sunrise with 4 Filter Slide, 405nm, 450nm, 492nm and 620nm filters and Magellan Software	4,364.00	5,062.00
F10728	Sunrise with 6 Filter Slide, 405nm, 450nm, 492nm, 540nm, 570nm and 620nm filters and Magellan Software	4,990.00	5,788.00
F10730	Sunrise with Gradient Filter Slide, (400nm - 700nm range) and Magellan Software	5,909.00	6,854.00
F10732	Sunrise with 4 Filter Slide, 405nm, 450nm, 492nm and 620nm filters, Temperature Control (42°C) and Magellan Software	5,048.00	5,856.00
F10734	Sunrise with 6 Filter Slide, 405nm, 450nm, 492nm, 540nm, 570nm and 620nm filters, Temperature Control (42°C) and Magellan Software	5,662.00	6,568.00
F10736	Sunrise with Gradient Filter Slide, (400nm - 700nm range), Temperature Control (42°C) and Magellan Software	6,562.00	7,612.00

Request A FREE Immunoassay Plate Sample Pack

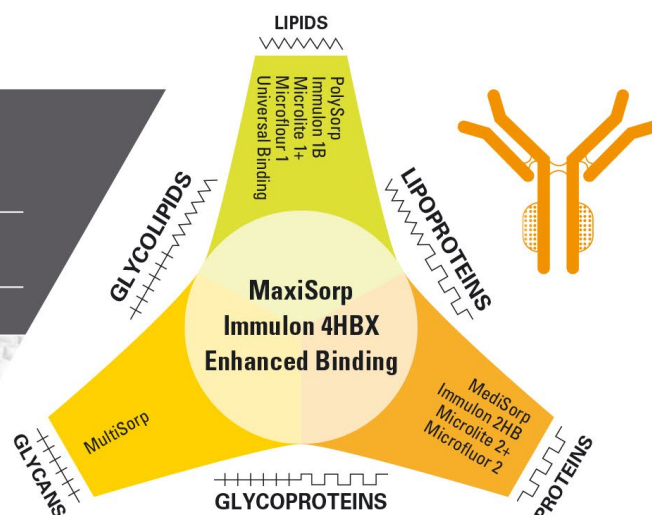
Are you sure that your plate is giving optimal results? Get a FREE sample of 5 different Thermo Scientific immunoplates. Just speak to your local SLS rep.

Sample Kit Includes:

Cat. No.	Profile	Surface	Qty/pack
442404	F96	MaxiSorp	1
467320	F96	MediSorp	1
3855	F96	Immulon 4HBX	1
3455	F96	Immulon 2HB	1
95029330	F96	Enhanced Binding	1

MediSorp and Immulon 2HB are slightly hydrophilic and bind a diverse range of biomolecules. Ideal for serum containing assays.

MaxiSorp, Immulon 4HBX, and Enhanced Binding (EB) are hydrophilic and ideal for antibody sandwich assays.



Density2Go Density Meters

METTLER TOLEDO

Made for use in the lab and on-the-go, the Densito and DensitoPro are perfect for all applications: from quality control of incoming goods to at-line quality assurance of intermediate or final products. Users can be guided through multi-step procedures with clear directions, from measurement to cleaning.

Density, Brix, and many more units using built-in calculations on the instrument are measured. Temperature compensation factors correct the measurement value to the desired temperature, ensuring accurate results no matter the temperature.

The DensitoPro comes with an RFID and barcode reader, allowing for a simple point-and-shoot sample ID entry.



Code	Description	List Price, £	List Price, €
DEN1014	Densito portable density meter	2,169.00	2,516.00
DEN1016	DensitoPro portable density meter	2,429.00	2,818.00



Accessories

Code	Description	Pack Size	List Price, £	List Price, €
DEN1018	EasyDirect density and refractometry PC software	EACH	532.00	617.00
DEN1020	Protective cover	EACH	104.00	121.00
DEN1022	Water density/refractive index combined standard (9mL)	EACH	253.00	293.00
DEN1024	Dodecane density/refractive index combined standard (9mL)	EACH	142.00	165.00
DEN1026	2-4-dichlorotoluene density/refractive index combined standard (9mL)	EACH	142.00	165.00
DEN1028	RFID Tag SmartSample	PK10	34.00	39.44
DEN1030	RFID Tag SmartSample film for tanks	PK10	41.00	47.56
DEN1032	Carrying case	EACH	124.00	144.00
DEN1034	Bluetooth Printer Godex MX20 with dongle	EACH	518.00	601.00
DEN1036	Bluetooth dongle	EACH	124.00	144.00
DEN1038	Bluetooth printer paper	PK5	10.00	11.60
DEN1040	USB cable (1.8m A-B) replacement cable to connect Density2Go to printer	EACH	14.50	16.82
DEN1042	Filling tube 190mm	EACH	31.00	35.96
DEN1044	Filling tube 600mm	EACH	47.00	54.52

Grant UV Cleaner Recirculator

2 YEARS

Grant

Easy to use UV cleaner-recirculator ideal for air disinfection in hospitals, research laboratories and clinics. UV air flow cleaner-recirculator consists of germicidal UV lamp, a fan unit equipped with dust filters and a control unit confined in a flow through chamber. UVR1000 consist of 1 UV lamp (18mW/cm²/s) whilst UVR1002 consist of 2 UV lamps (36mW/cm²/s).

- ✓ Full user protection from direct UV radiation
- ✓ Air flow Productivity - 14m³/h
- ✓ Simple to operate
- ✓ Convenient fixation on walls or mount on a movable tripod (optional)
- ✓ Two operation modes — short time (under timer control) and continuous operation (UVR1002 Only)

Code	Description	List Price, £	List Price, €
UVR1000	UVR-M	402.00	466.00
UVR1002	UVR-Mi	605.00	702.00

Grant UV Cleaner Recirculator Accessories

Code	Description	List Price, £	List Price, €
UVR1004	Wheeled trolley for UVR-M and UVR-Mi	605.00	702.00



UVR1004

TECH MASTER CO₂ Regulator



TECH MASTER CO₂ Regulator 0 to 1.5 Bar

Code	Description	Offer Price, £	Offer Price, €
F10684	TECH MASTER CO ₂ Regulator 0 to 1.5 Bar	89.99	104.00

SPECIAL OFFER
45%
DISCOUNT


$$Hy = K F t [Ori \times Accy]$$

Hydranal™ Karl Fischer Original Accuracy
titration



Discover the perfect formula

The world's leading pyridine-free reagents for Karl Fischer titration

Since 1979, the Hydranal™ line of Karl Fischer reagents has been recognized as the most trusted brand in the industry. Leading the way in innovation and safety, Hydranal reagents have reduced hazardous components without compromising the accuracy of your results.

Honeywell



© 2018 Honeywell International. All rights reserved.

Discover more about Honeywell Research Chemicals, visit: lab-honeywell.com/scientificlabs/

Lancer Ultima Series Undercounter Washers



LANCER

- ✓ Touchscreen Prolux controller gives easy access to preset and custom programmed cycles
- ✓ Preset or user programmable cycles permit multiple combinations of prewash, wash, rinse, acid rinse, purified final rinse, and forced air dry (815LX only)
- ✓ Steam condenser and automatic chemical dosing pumps are standard on all models
- ✓ Ext Dims, w x d x h, mm: 609 x 739 x 850
- ✓ 2 wash levels – baskets and accessories sold separately – see web for details
- ✓ Includes delivery, installation, commissioning, detergent pack & 1st year service contract
- ✓ Basic Configuration - (no low pressure kit or glass window) – Exclusive to SLS!



**Exclusive
to SLS**
Basic Configuration

Code	Model	Electrical Information	Offer Price, £	Offer Price, €
F10686	810LX (No drying)	50Hz 380-400V 3PH+N+E	4,580.00	5,313.00
F10688	810LX (No drying)	50Hz 220-240V 1PH+N+E	4,885.00	5,667.00
F10690	815LX (Forced-air drying)	50Hz 380-400V 3PH+N+E	5,044.00	5,851.00
F10692	815LX (Forced-air drying)	50Hz 220-240V 1PH+N+E	5,044.00	5,851.00

Lancer ULTIMA Model 1300LX
with FREE Starter Racking

Copes easily with your high volume throughput or mixed loads, this freestanding 1300LX model can wash and dry on 3 levels yet still has a small footprint.

- ✓ Large capacity and volume with 3 levels
- ✓ Powerful and rapid HEPA filtered drying through injectors and chamber
- ✓ Increased safety with on-board storage and input of chemicals
- ✓ Higher grade 316L stainless steel chamber
- ✓ Exterior dims, w x d x h, mm: 609 x 752 x 1643
- ✓ Interior dims, w x d x h, mm: 535 x 520 x 644
- ✓ **FREE Racking Starter Kit (1 x PST basic basket/ 1 x 36IXLC injector basket / 1 x LTCXL stainless mesh basket)**
- ✓ **Includes delivery, installation, commissioning, detergent pack & 1st year service contract**



Code	Model	Offer Price, £ (Including Racks)	Offer Price, €
F10694	1300LX	13,350.00	15,486.00

Thermo Scientific Forma 89000 Series -86°C ULT Freezers



Thermo
SCIENTIFIC

Designed with new energy-saving and sustainability features, Thermo Scientific™ Forma™ 89000 Series ultra-low freezers feature four upright models, maximising storage capacity from 30,000 up to 60,000 2mL vials.

A simplified touch-screen interface, utilising capacitive touch, enables easy access to set points, data and other performance and security information.



- ✓ Save up to 25% in energy usage and heat rejection over conventional refrigerant ultra-low freezers
- ✓ Meets validation protocols at -70°C and -80°C with strong peak variation and steady-state temperature variation
- ✓ Low sound output below 53 dBA, enabling the freezer to come out of the hallway and into the lab for more efficient sample access
- ✓ Natural hydrocarbon refrigerants reduce system operating stresses promoting outstanding reliability and sample protection
- ✓ Designed for daily usage, recovers cabinet temperature 20% faster after opening the door
- ✓ Four inner doors minimise ambient temperature during sample retrieval



Code	Capacity, L	Capacity, No of 2" Cryoboxes	Dims, w x d x h, mm	Energy Consumption, kWh/24hr	Door Opening Recovery, mins	Offer Price, £	Offer Price, €
F10498	422	300	584 x 955 x 1981	9.4	13	8,040.00	9,326.00
F10500	549	400	719 x 955 x 1981	9.8	15	8,670.00	10,057.00
F10502	682	500	864 x 955 x 1981	10.8	21	9,340.00	10,834.00
F10504	816	600	1006 x 955 x 1981	11.5	26	10,010.00	11,612.00

CLEARLine 1D Cryogen Tubes - 2mL

CLEARLine®
"Be cool, be safe, be CLEARLine"

Innovative screw caps eliminate leakage and contamination. Both internal and external screw caps are co-moulded with a thermoplastic elastomer (TPV) layer and are 95kPa certified to provide a 100% leak-proof seal. This proprietary moulding process eliminates the risk of contamination associated with brands that use separate o-rings.

- ✓ Human DNA, DNase, RNase, Pyrogen, ATP, PCR inhibitors free certified
- ✓ Sterile SAL 10⁻⁶
- ✓ CE-IVD marked
- ✓ Certified IATA PI 650
- ✓ Manufactured in Clean Room Class ISO 7 (UNI EN ISO 14644-1) Class 10000 (US FED STD 209E)
- ✓ Working Temperature: down to -196°C
- ✓ Printed graduations
- ✓ White writing surface
- ✓ Star shaped top cavity for automatic decapping
- ✓ Standard code 128 barcode on each vial with human readable characters



Supplied in packs of 500 (10 Zip Lock Bags of 50 Tubes)

Code	Description	Offer Price, £	Offer Price, €
F10612	Internal screw cap	98.40	114.00
F10614	External screw cap	98.40	114.00

CLEARLine Polycarbonate 100 Place Cryoboxes for 2mL Tubes



Supplied in packs of 5

Code	Description	Offer Price, £	Offer Price, €
F10616	White	16.63	19.29
F10618	Light blue	16.63	19.29
F10620	Red	16.63	19.29
F10622	Green	16.63	19.29
F10624	Yellow	16.63	19.29
F10626	White with 1D barcode	33.60	38.98
F10628	White with 2D barcode	33.60	38.98

Gram Biocompact II 125L Refrigerator and Freezer

5 YEARS

GRAM
Biostorage you can depend on

The Gram BioCompact II range is suitable for the storage of a range of biomaterials where dependability is key, the versatile interior layout ensures flexibility to meet specific requirements. Storage and shelving options include plastic coated or stainless steel wire shelves, perforated stainless steel shelves and aluminium or stainless steel drawers.

- ✓ Includes 2 plastic coated wire shelves 430mm
- ✓ ATEX certified spark free (exterior and interior)
- ✓ GRAM MPC 4.6 control unit with LED display which incorporates door alarm, temperature alarm, voltage free contact, high/low temperature and temperature alarm history
- ✓ Finned tube evaporator which eliminates cold walls
- ✓ Smart Defrost advanced defrosting function manages auto-defrost for optimum temperature performance
- ✓ Access port as standard



30%
OFF
list price

Code	Dims, w x d x h, mm	Max No. of Shelves/ Drawers	Temperature Range, °C	Offer Price, £	Offer Price, €
F10518	595 x 640 x 830	7/4	+2 to +20	875.00	1,015.00
F10520	595 x 640 x 830	7/4	-5 to -25	935.00	1,085.00

Taylor Wharton LS Series with FREE Face Shield

The LS series refrigerators are uniquely designed for large vial capacity in convenient box-type storage racks.

The LS3000, LS4800 and LS6000 are available with controllers which provide automatic filling and alarm features. Controllers are a factory fitted option. Retrofitting is not possible.

- ✓ Dual benefit of large sample capacity and exceptionally low evaporation rates
- ✓ Rack system index location ring and internal spider allows easy location and quick retrieval of samples
- ✓ LS750 holds 25 vial boxes in 5 x 5 matrix
- ✓ LS3000, LS4800, LS6000 hold vial boxes in 10 x 10 matrix
- ✓ All units supplied complete with racks



Code	Model	LN ₂ Capacity, L	Offer Price, £	Offer Price, €
F10314	LS3000	81	2,766.00	3,209.00
F10316	LS4800	130	3,122.00	3,622.00
F10318	LS6000	165	3,439.00	3,989.00

Delivery not included

Taylor Wharton K-Series with FREE Personal Oxygen Depletion Monitor

The K Series cryogenic systems are ideal for liquid or vapour phase storage of samples. The combination of automatic filling, alarms, easy access to stored product and the unique temperature gradient suppression system give excellent vapour phase storage temperature control and recovery.

- ✓ 10,400 (10K) or 24,050 (24k) vial storage capacities
- ✓ Baxter and Gambro bag storage systems
- ✓ 96 tube format storage systems
- ✓ Inventory control systems sold separately
– see SLS website for details

FREE
Personal Oxygen
Depletion Monitor
(Worth €290)

15%
OFF
list price



Code	Description	Controller	Offer Price, £	Offer Price, €
F10320	10K	AFT-1D	7,784.00	9,029.00
F10322	10K	AFT-3L	8,300.00	9,628.00
F10324	24K	AFT-1D	10,908.00	12,653.00
F10326	24K	AFT-3L	11,605.00	13,462.00

Delivery not included

Taylor Wharton Lab Series with FREE LN₂ Safety Audit

The LABS series freezers provide unique solutions to both short-term and long-term storage in vapour phase.

- ✓ Near LN₂ temperature at top rack in vapour phase
- ✓ All stainless steel inner and outer container with full super insulation wrap
- ✓ Two-handle aluminium lid with durable polyurethane plug. Hinged and lockable
- ✓ Flat table top convenient work surface
- ✓ Low rise, foldable sure grip step
- ✓ "Easy-Turn" aluminium turntable - no bearings
- ✓ 19,500 (20K), 41,600 (40K), 79,300 (80K) or 04,500 (94K) vial capacities
- ✓ Inventory system required, not supplied

Plus
FREE
LN₂ Safety
Audit
(Worth €986)

15%
OFF
list price



Code	Description	Controller	Offer Price, £	Offer Price, €
F10328	20K	None	15,041.00	17,448.00
F10330	20K	AFT-1D	17,606.00	20,423.00
F10332	20K	AFT-3L	18,459.00	21,412.00
F10334	40K	None	19,829.00	23,002.00
F10336	40K	AFT-1D	22,393.00	25,976.00
F10338	40K	AFT-3L	23,246.00	26,965.00
F10340	80K	None	29,230.00	33,907.00
F10342	80K	AFT-1D	31,794.00	36,881.00
F10344	80K	AFT-3L	32,647.00	37,871.00
F10346	94K	None	37,085.00	43,019.00
F10348	94K	AFT-1D	39,649.00	45,993.00
F10350	94K	AFT-3L	40,502.00	46,982.00

Delivery not included



LAB | Innovations

31 October & 1 November 2018 | NEC, Birmingham

The UK's only event for the entire laboratory industry

Learn:

- Keynote speakers: **Maggie Philbin** and **Steve Mould**
- Royal Society of Chemistry Theatre
- Insights and Innovations Theatre
- **Live Lab**
- 2 full days of FREE CPD
- Cleanroom Hub in partnership with Cleanroom Technology

Discover:

- Innovation from more than 200 companies showcasing the latest lab technologies and solutions
- NEW Sustainable Laboratory in partnership with Andy Evans from Greenlight Laboratories
- Numerous networking opportunities
- Networking drinks sponsored by LABMATE
- Select Science awards party
- Innovation DB VIP dinner - by invitation only

REGISTER NOW FOR FREE
www.lab-innovations.com

#labx2018



@labinnovations



Lab Innovations



Lab Innovations Group

**ADVANCED
ENGINEERING 2018**



One badge two shows - your Lab Innovations badge gives you access to our sister show, Advanced Engineering. Find out more at advanced-engineering.com

by **EASYFAIRS**