

# FOCUS

EXCLUSIVE OFFERS & EXCITING NEW PRODUCTS

## GREAT NEW OFFERS INSIDE:

### Stuart Hotplate Stirrers

Ideal for day-to-day use

(See page 25)

### Wheaton CompletePak Kits

Vials, stoppers and seals

(See page 14)

### BioDrop UV Vis Spectrophotometer

Delivering rapid, simple and accurate measurement of various samples



25%  
OFF

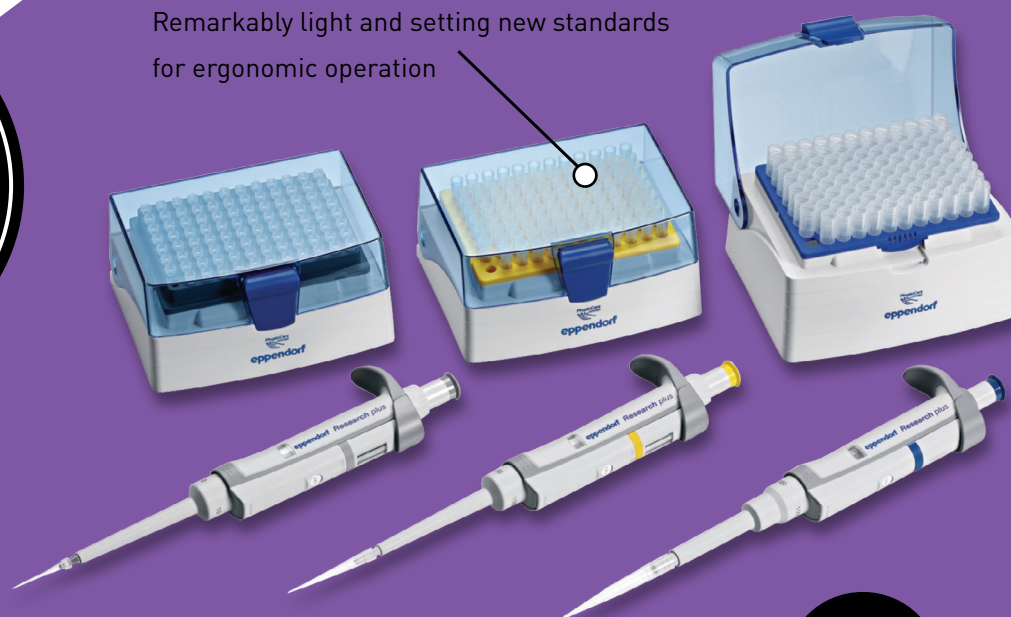
See page 33...

See page 3...

23%  
OFF

### Eppendorf Research Plus Pipettes

Remarkably light and setting new standards for ergonomic operation



1<sup>st</sup> Sep - 31<sup>st</sup> Dec

2019

Brought to you by Ireland's totally independent  
supplier of scientific products

# WELCOME

## FOCUS

September 2019 Edition

Now firmly established as THE promotions brochure for laboratories, FOCUS goes from strength to strength.

This edition promises great savings on a huge range of equipment, consumables and reagents. Whatever your discipline you are sure to find a product at a budget to suit your needs!

**Remember: These offers are EXCLUSIVE to Analab and valid until 31<sup>st</sup> December 2019**

### Suppliers



### KEY to product symbols:

- Length of warranty
- No. years warranty can be extended
- Lifetime warranty
- Sustainable features



## KEY Highlights



Gilson Microman  
E Pipettes  
**See page 10**



Flowgen Plate  
Spinner Centrifuge  
**See page 20**



PCRmax Alpha  
Cyclers  
**See page 31**



Sartorius Arium  
Mini Plus Ultrapure  
Water System  
**See page 35**



Lancer ULTIMA 1300LX  
Freestanding Labware  
Washer Dryer  
**See page 37**



LEEC Culture Safe  
Precision CO<sub>2</sub> Incubators  
**See page 43**

Eppendorf Research Plus  
Single-Channel Pipettes 3-Packs

3  
YEARS

Remarkably light, both in terms of weight and pipetting forces, setting new standards for ergonomic operation. A spring-loaded tip cone, a secondary adjustment option, and an improved volume display in an ultra-light, fully autoclavable pipette. SOFTeject reduces tip ejection forces by 50%.



**Option 1** includes: 3 pipettes – Eppendorf Research plus (0.5-10µL, 10-100µL, 100-1000µL), 3 x 96 epT.I.P.S. pipette tips in refill boxes, 1 x pipette pen, 1 x SOP.

**Option 2** includes: 3 pipettes – Eppendorf Research plus (2-20µL, 20-200µL, 100-1000µL), 3 x 96 epT.I.P.S. pipette tips in refill boxes, 1 x pipette pen, 1 x SOP.

**Option 3** includes: 3 pipettes – Eppendorf Research plus (100-1000µL, 0.5-5mL, 1-10mL), 1 x 96 epT.I.P.S. pipette tips in refill box 1000µL, 1 sample bag 5µL tips, 1 sample bag 10µL tips, 1 x pipette pen, 1 x SOP.

Code	Description	Offer Price, £	Offer Price, €
F12350	Research Plus 3-pack option 1	407.00	472.00
F12352	Research Plus 3-pack option 2	407.00	472.00
F12354	Research Plus 3-pack option 3	407.00	472.00



SLS Select Alcohol Wipes  
200 x 200mm

200 wipes per tub

Code	Offer Price, £	Offer Price, €
F12530	3.60	4.18

SPECIAL OFFER

70%  
OFF

# Eppendorf CellXpert C170 and C170i CO<sub>2</sub> Incubators



Ensuring the reproducibility of experiments by minimising atmospheric fluctuations inside the incubator, with fast temperature and CO<sub>2</sub> recovery in less than 5 minutes without overshoot and advanced microprocessor control. Featuring a fan-less design for increased capacity, lower operating costs, and less opportunity for contamination.

- No internal HEPA-filters that potentially contaminate the chamber after HTD
- Seamless, stainless-steel interior to minimise possible points of contamination
- Dual-channel infrared CO<sub>2</sub> sensor
- Intuitive user interface
- Capacity: 70L
- Temperature range +4 to +50°C
- CO<sub>2</sub> range 0.1 to 20%
- External dims, w x d x h, mm, 718 x 715 x 900
- Internal dims, w x d x h, mm, 539 x 445 x 692

**18% OFF**

Buy 2 and get **FREE** Lower and Upper Stacking Stand worth over £1000

**+FREE Delivery**



Code	Description	Display	High Temperature Disinfection, °C	No. of Shelves (standard/max)	On Board Data Logging	Offer Price, £	Offer Price, €
<b>F12410</b>	C170i CO <sub>2</sub> incubator touch screen handle right side	Touch screen	180	4/8	Yes	<b>6215.00</b>	<b>7209.00</b>
<b>F12412</b>	C170i CO <sub>2</sub> incubator touch screen handle left side	Touch screen	180	4/8	Yes	<b>6215.00</b>	<b>7209.00</b>
<b>F12414</b>	C170i CO <sub>2</sub> incubator touch screen handle right side - copper	Touch screen	180	4/8	Yes	<b>8626.00</b>	<b>10006.00</b>
<b>F12416</b>	C170i CO <sub>2</sub> incubator touch screen handle left side - copper	Touch screen	180	4/8	Yes	<b>8626.00</b>	<b>10006.00</b>
<b>F12420</b>	C170 CO <sub>2</sub> incubator standard display handle right side	Standard LED display	140	3/8	No	<b>5310.00</b>	<b>6160.00</b>



# FREE Eppendorf Multipette M4 when you buy 7 Packs of Combitips Advanced



Offering a unique volume range of 1µL - 10mL and is the only mechanical dispenser that dispenses the aspirated liquid up to 100 times without refilling the tip.

- Repetitive dispensing of volumes in long series
- Contamination-free dispensing of hazardous liquids
- Precise and accurate dispensing of viscous solutions e.g. glycerol, or liquids with high vapour pressure e.g. ethanol
- Purchase 7 packs of Combitips Advanced from the list below at your normal price to receive a FREE Multipette M4 (Multipette and Combitips shipped separately)

**Combitips are supplied in packs of 100**

## Combitips Advanced - Eppendorf Quality

High precision and accuracy guaranteed by precise moulding and testing.

Code	Colour	Volume, mL	List Price, £	List Price, €
<b>F12356</b>	White	0.1	78.28	91.00
<b>F12358</b>	Light blue	0.2	78.28	91.00
<b>F12360</b>	Purple	0.5	78.28	91.00
<b>F12362</b>	Yellow	1.0	78.28	91.00
<b>F12364</b>	Green	2.5	78.28	91.00
<b>F12366</b>	Blue	5.0	78.28	91.00
<b>F12368</b>	Orange	10.0	78.28	91.00
<b>F12370</b>	Red	25.0	92.89	108.00
<b>F12372</b>	Light grey	50.0	102.08	118.00

## Combitips Advanced - PCR Clean

Certified free of DNases, RNases, nucleic acids and PCR inhibitors.

Code	Colour	Volume, mL	List Price, £	List Price, €
<b>F12374</b>	White	0.1	99.02	115.00
<b>F12376</b>	Light blue	0.2	99.02	115.00
<b>F12378</b>	Purple	0.5	99.02	115.00
<b>F12380</b>	Yellow	1.0	99.02	115.00
<b>F12382</b>	Green	2.5	99.02	115.00
<b>F12384</b>	Blue	5.0	99.02	115.00
<b>F12386</b>	Orange	10.0	99.02	115.00
<b>F12388</b>	Red	25.0	116.29	135.00
<b>F12390</b>	Light grey	50.0	125.50	146.00



## Combitips Advanced - Biopur

Guaranteed to be sterile and free of pyrogens, RNases, DNases, DNA and ATP as well as PCR inhibitors. Individually wrapped.

Code	Colour	Volume, mL	List Price, £	List Price, €
<b>F12392</b>	White	0.1	143.91	167.00
<b>F12394</b>	Light blue	0.2	143.91	167.00
<b>F12396</b>	Purple	0.5	143.91	167.00
<b>F12398</b>	Yellow	1.0	143.91	167.00
<b>F12400</b>	Green	2.5	143.91	167.00
<b>F12402</b>	Blue	5.0	143.91	167.00
<b>F12404</b>	Orange	10.0	143.91	167.00
<b>F12406</b>	Red	25.0	168.34	195.00
<b>F12408</b>	Light grey	50.0	181.66	211.00



# Raise the Limits

## Eppendorf Research® plus

Eppendorf sets standards in ergonomics! This ultralight pipette meets the highest needs in precision and accuracy – combined with ultimate ergonomics and increased flexibility.

A spring-loaded tip cone, a secondary adjustment option, an improved volume display – and all that in an ultra light, fully autoclavable pipette.

- > Ideal ergonomics:  
Eppendorf PhysioCare Concept®
- > Ultra light with minimal pipetting and ejection forces
- > Spring-loaded tip cone
- > Available as single-channel pipette with fixed and variable volume as well as 8-, 12-, 16- and 24-channel pipette



[www.analab.co.uk](http://www.analab.co.uk)

## Eppendorf Centrifuge Bottles

eppendorf

A reusable solution for large-volume, low-speed applications. The new bottles extend the application range of large benchtop centrifuge 5910 R. The 1000mL bottle was specially designed for swing-bucket rotor S-xUniversal and upgrades centrifuge 5910 R into a 4L system. The 400mL bottle fits into swing-bucket rotor S-4x400.



- Bottles and lids autoclavable at 121°C, UV-resistant and dishwasher-proof
- Tight seal and easy to open and close
- Compatible with optional aerosol-tight caps for the safe handling of hazardous substances
- Material: polypropylene



Supplied in packs of 2

Code	Description	Dims, Ø x h, mm	Max RCF, x g	List Price, £	List Price, €
<b>E5910707002</b>	400mL bottle	81 x 117	5030	153.00	177.00
<b>E5910770006</b>	1000mL bottle	118 x 133	4256	153.00	177.00
<b>E5910706006</b>	Adapter for 400mL bottle for S 4x400 rotor	-	-	183.00	212.00
<b>E5910756003</b>	Adapter for 1000mL bottle for rotor S-4xUniversal	-	-	217.00	252.00

## Eppendorf Conical Tubes 25mL

eppendorf

Premium raw materials, without the use of plasticisers or biocides during manufacturing ensure the highest sample integrity. High g-Safe centrifugation stability up to 17,000 x g, lid tightness from -86°C up to 100°C as well as optimal sample and pellet visibility are assured.

- ~20% lower height helps prevent contamination and allows easy recovery of sample solutions
- Same diameter as 50mL conical tubes



Code	Description	Pack	Inner Pack	List Price, £	List Price, €
<b>E0030118405</b>	Eppendorf Quality with snap cap	200	5 bags of 40 tubes	48.60	56.00
<b>E0030118413</b>	PCR clean with snap cap	200	5 bags of 40 tubes	52.00	60.00
<b>E0030118421</b>	Sterile with snap cap - pyrogen, DNase, RNase and DNA-free	150	6 bags of 25 tubes	43.20	50.00
<b>E0030122410</b>	Eppendorf Quality with screw cap	200	4 bags of 50 tubes	52.00	60.00
<b>E0030122429</b>	PCR clean with screw cap	200	4 bags of 50 tubes	56.00	65.00
<b>E0030122437</b>	Sterile with screw cap - pyrogen, DNase, RNase and DNA-free	200	8 bags of 25 tubes	59.00	68.00
<b>E0030118502</b>	Starter Pack PCR clean with snap cap - 200 tubes, 4 single tube stands, 6 adapters for rotors with bore for 50mL conical tubes	Each	-	85.00	99.00
<b>E0030122500</b>	Starter Pack PCR clean with screw cap - 200 tubes, 4 single tube stands, 6 adapters for rotors with bore for 50mL conical tubes	Each	-	89.00	103.00

# Sartorius Picus Electronic Pipettes

2 YEARS



Small, light and ergonomic design ensures comfort of use and helps avoid RSI. Incorporates an electronic brake and piston control system for accurate and precise pipetting results, whilst an intuitive user interface with an adjustment wheel ensures fast volume setting and easy menu navigation.

- Electronic tip ejection
- Built in plate tracker functionality guides pipetting steps for improved microplate work
- Lightweight, 100g
- Optiload ensures tip loading with a constant and equal force for perfect sealing
- Hot key access for up to 10 saved programmes



**25% OFF**

Code	Channels	Volume Range, $\mu\text{L}$	Offer Price, £	Offer Price, €
F12162	Single	0.2 - 10	404.00	469.00
F12164	Single	5 - 120	404.00	469.00
F12166	Single	10 - 300	404.00	469.00
F12168	Single	50 - 1000	404.00	469.00
F12170	Single	100 - 5000	404.00	469.00
F12172	Single	500 - 10,000	404.00	469.00
F12174	8	0.2 - 10	622.00	722.00
F12176	8	5 - 120	622.00	722.00
F12178	8	10 - 300	622.00	722.00
F12180	8	50 - 1200	622.00	722.00
F12182	12	0.2 - 10	746.00	865.00
F12184	12	5 - 120	746.00	865.00
F12186	12	10 - 300	746.00	865.00
F12188	12	50 - 1200	746.00	865.00

## Accessories

Code	Description	Offer Price, £	Offer Price, €
F12190	Sartorius Picus 4 position charging carousel with AC-adaptor	292.00	339.00

# Thermo Scientific Finnpiquette F1 Variable Volume Pipettes

5  
YEARS

**Thermo**  
SCIENTIFIC

Performance and ergonomic comfort make these pipettes a great choice for your lab.

- Lightweight handle design combined with low plunger, tip attachment and ejection forces help reduce the risk of RSI
- Silent and lighter volume adjustment mechanism
- The secure volume setting prevents undesirable volume drift during operation
- The 120° adjustable finger rest – for both right and left handed operator comfort allows the hand to relax during pipetting
- The Finnpiquette F1 Pipette together with compatible Finntip tips is CE marked in accordance with the IVD Directive



## Finnpiquette Single Channel Pipettes

Code	Volume Range, $\mu$ L	Offer Price, £	Offer Price, €
<b>F12238</b>	1 - 10	185.00	215.00
<b>F12240</b>	2 - 20	185.00	215.00
<b>F12242</b>	5 - 50	185.00	215.00
<b>F12244</b>	10 - 100	185.00	215.00
<b>F12246</b>	20 - 200	185.00	215.00
<b>F12248</b>	30 - 300	185.00	215.00
<b>F12250</b>	100 - 1000	185.00	215.00
<b>F12252</b>	500 - 5000	193.00	224.00
<b>F12254</b>	1000 - 10,000	193.00	224.00

## Finnpiquette Multichannel Pipettes

Code	Channels	Volume Range, $\mu$ L	Offer Price, £	Offer Price, €
<b>F12256</b>	8	1 - 10	483.00	560.00
<b>F12258</b>	8	5 - 50	483.00	560.00
<b>F12260</b>	8	10 - 100	483.00	560.00
<b>F12262</b>	8	30 - 300	483.00	560.00
<b>F12264</b>	12	1 - 10	546.00	633.00
<b>F12266</b>	12	5 - 50	546.00	633.00
<b>F12268</b>	12	10 - 100	546.00	633.00
<b>F12270</b>	12	30 - 300	546.00	633.00



## Gilson Microman E Pipettes L



Fully adjustable, positive-displacement pipette delivering the highest ease-of-use and control. Its capillary pistons are especially useful when pipetting problem liquids, where the design ensures accuracy and precision whilst also offering the strongest barrier against residual sample carryover, aerosol contamination and cross-contamination.

- Patented QuickSnap feature automatically fixes the disposable capillary piston
- Ultimate contamination protection
- Comfortable finger hook
- Large action button
- Volume securing button
- Clearly visible volumeter



**40%  
OFF**

Code	Description	Compatible Capillary Piston	Volume Range, µL	Offer Price, £	Offer Price, €
<b>F12010</b>	M10	CP10 / CP10ST	1 - 10	152.00	176.00
<b>F12012</b>	M25	CP25 / CP25ST	3 - 25	152.00	176.00
<b>F12014</b>	M50	CP50 / CP50ST	20 - 50	152.00	176.00
<b>F12016</b>	M100	CP100 / CP100ST	10 - 100	152.00	176.00
<b>F12018</b>	M250	CP250 / CP250ST	50 - 250	152.00	176.00
<b>F12020</b>	M1000	CP1000 / CP1000ST	100 - 1000	152.00	176.00

Thermo Scientific



S1 Pipette Fillers

## Thermo Scientific S1 Pipette Fillers

**2  
YEARS**

SPECIAL OFFER

**45%  
OFF**

Code	Colour	Offer Price, £	Offer Price, €
<b>F12228</b>	White	289.00	335.00
<b>F12230</b>	Clear	289.00	335.00
<b>F12232</b>	Blue	289.00	335.00
<b>F12234</b>	Red	289.00	335.00
<b>F12236</b>	Green	289.00	335.00

# Gilson Microman Capillary Pistons



Gilson Capillary Pistons are lightweight and slim so they fit narrow and deep tubes, made of pure polypropylene and contamination free. Also available sterilised ensuring that they are free of DNA, RNA, DNAses, RNAses, ATP, pyrogens and trace metals.

- With the disposable piston located inside the capillary tip, users can be assured that no harmful samples will contaminate the pipette
- Dye-free - no risk of chemical contamination



Code	Description	Volume Range, $\mu$ L	Pack	Offer Price, £	Offer Price, €
<b>F12022</b>	CP10	1 - 10	960	157.00	182.00
<b>F12024</b>	CP10	1 - 10	192	39.70	46.10
<b>F12026</b>	CP10ST sterile	1 - 10	960	224.00	260.00
<b>F12028</b>	CP10ST sterile	1 - 10	192	44.90	52.00
<b>F12030</b>	CP25	3 - 25	960	173.00	201.00
<b>F12032</b>	CP25	3 - 25	200	33.20	38.50
<b>F12034</b>	CP25ST sterile	3 - 25	576	134.00	155.00
<b>F12036</b>	CP50	20 - 50	960	173.00	201.00
<b>F12038</b>	CP50	20 - 50	200	33.20	38.50
<b>F12040</b>	CP50ST sterile	20 - 50	576	134.00	155.00
<b>F12042</b>	CP100	10 - 100	960	157.00	182.00
<b>F12044</b>	CP100	10 - 100	192	39.70	46.10
<b>F12046</b>	CP100ST sterile	10 - 100	960	224.00	260.00
<b>F12048</b>	CP100ST sterile	10 - 100	192	44.90	52.00
<b>F12050</b>	CP250	50 - 250	960	173.00	201.00
<b>F12052</b>	CP250	50 - 250	200	33.20	38.50
<b>F12054</b>	CP250ST sterile	50 - 250	576	134.00	155.00
<b>F12056</b>	CP1000	100 - 1000	182	39.70	46.10
<b>F12058</b>	CP1000ST sterile	100 - 1000	182	44.90	52.00

# Gilson Pipetman 4 Pipette Kits L



## Kits include:

- 4 Pipetman pipettes: P2, P20, P200 and P1000
- 3 racks of certified quality Pipetman Diamond tips: D10L, D200 and D1000
- 4 single pipette holders
- 1 Gilson guide to pipetting



## Pipetman L

Pipetman L is a lightweight pipette with a newly designed handle that fits naturally in your hand.



Code	Offer Price, £	Offer Price, €
F12060	534.00	619.00

## Pipetman G

Pipetman G incorporates a completely redesigned and lubricated piston system offering one of the lowest pipetting forces on the market.

Code	Offer Price, £	Offer Price, €
F12062	481.00	558.00

## Pipetman Classic

Pipetman P Classic pipette is designed and manufactured to provide you with a range of robust, accurate and precise pipettes.

Code	Offer Price, £	Offer Price, €
F12064	455.00	528.00



## SLS Select Reagent Reservoirs

Sterile, DNA, RNAse & pyrogen free

Code	Description	Pack	Offer Price, £	Offer Price, €
F12532	25mL individually wrapped	50	20.60	23.90
F12534	50mL individually wrapped	50	15.30	17.70
F12536	100mL inner packs of 5	100	21.00	24.40





## SLS Select Serological Pipettes

Manufactured in compliance with the current versions of the ISO 13485 and FDA CFR 21 Part 820, cGMP.

- Made from USP Class VI polystyrene resin
- Crisp, dark ascending and descending as well as negative graduations
- Colour-coded rings for easy identification
- Plugged
- Sterile, non-pyrogenic, RNase-/DNase-free



**60%  
OFF**

Code	Volume, mL	Individually Wrapped	Inner Pack	Pack	Offer Price, £	Offer Price, €
F12500	1	Yes	100	1000	57.00	66.00
F12502	1	No	25	1000	47.20	55.00
F12504	2	Yes	100	1000	63.00	73.00
F12506	2	No	25	1000	47.20	55.00
F12508	5	No	25	500	44.80	52.00
F12510	5	Yes	50	200	17.20	20.00
F12512	10	Yes	50	200	18.00	20.90
F12514	10	No	25	500	55.00	64.00
F12516	25	No	20	200	65.00	75.00
F12518	25	Yes	50	200	41.20	47.80
F12520	50	Yes	20	100	50.00	58.00



### Corning Stripettor Ultra

Code	Offer Price, £	Offer Price, €
F12068	138.00	160.00

Over  
**45%  
OFF**

## Wheaton CompletePak Kits



Crimp top vials, rubber stoppers and seals which can be customised for any application. Each kit comes with specific USP certificates. The vials are packaged in a sterile polypropylene (PP) tray which is ideal for manual filling. Each kit is designed to fit in a standard fume hood.

- Sterile - 18 month shelf life from date of processing
- Certified USP <788> Particulate Matter in Injections, USP <85> The Bacterial Endotoxins Test and USP <71> The Sterility Test
- Container Closure Integrity (CCI) certification available upon request
- Each kit has equal amounts of components for reduced scrap rates
- Complete manufacturing traceability
- Frees up valuable clean room space



Code	Vials Included	Stoppers Included	Seals Included	List Price, £	List Price, €
<b>VIA1020</b>	210 x 2mL clear sterile vial	230 x 13mm omni flex 3G sterile serum stopper	230 x 13mm sterile blue seal	1282.00	1487.00
<b>VIA1022</b>	210 x 2mL clear sterile vial	230 x 13mm omni flex 3G sterile serum stopper	230 x 13mm sterile red seal	1282.00	1487.00
<b>VIA1024</b>	200 x 5mL clear sterile vial	220 x 20mm omni flex 3G igloo lyo stopper	220 x 20mm sterile blue seal	1375.00	1595.00
<b>VIA1026</b>	200 x 5mL clear sterile vial	220 x 20mm omni flex 3G sterile igloo lyo Stopper	220 x 20mm sterile red seal	1375.00	1595.00
<b>VIA1028</b>	158 x 10mL clear sterile vial	220 x 20mm ultra-pure sterile serum stopper	220 x 20mm sterile blue seal	1288.00	1494.00
<b>VIA1030</b>	158 x 10mL clear sterile vial	220 x 20mm ultra-pure sterile serum stopper	220 x 20mm sterile red seal	1288.00	1494.00
<b>VIA1032</b>	200 x 5mL clear sterile vial	220 x 20mm omni flex 3G sterile serum stopper	220 x 20mm sterile blue seal	1340.00	1554.00
<b>VIA1034</b>	200 x 5mL clear sterile vial	220 x 20mm omni flex 3G sterile serum stopper	220 x 20mm sterile red seal	1340.00	1554.00
<b>VIA1036</b>	158 x 10mL clear sterile vial	220 x 20mm omni flex 3G sterile igloo lyo stopper	220 x 20mm sterile blue seal	1434.00	1663.00
<b>VIA1038</b>	158 x 10mL clear sterile vial	220 x 20mm omni flex 3G sterile igloo lyo stopper	220 x 20mm sterile red seal	1434.00	1663.00
<b>VIA1040</b>	158 x 10mL clear sterile vial	220 x 20mm omni flex 3G sterile serum stopper	220 x 20mm sterile blue seal	1399.00	1623.00
<b>VIA1042</b>	158 x 10mL clear sterile vial	220 x 20mm omni flex 3G sterile serum stopper	220 x 20mm sterile red seal	1399.00	1623.00
<b>VIA1044</b>	210 x 2mL clear sterile vial	230 x 13mm ultra-pure sterile serum stopper	230 x 13mm sterile blue seal	1171.00	1358.00
<b>VIA1046</b>	210 x 2mL clear sterile vial	230 x 13mm ultra-pure sterile serum stopper	230 x 13mm sterile red seal	1171.00	1358.00
<b>VIA1048</b>	210 x 2mL clear sterile vial	230 x 13mm omni flex 3G sterile igloo lyo stopper	230 x 13mm sterile blue seal	1317.00	1528.00
<b>VIA1050</b>	210 x 2mL clear sterile vial	230 x 13mm omni flex 3G sterile igloo lyo stopper	230 x 13mm sterile red seal	1317.00	1528.00
<b>VIA1052</b>	200 x 5mL clear sterile vial	220 x 20mm ultra-pure sterile serum stopper	220 x 20mm sterile blue seal	924.00	1072.00
<b>VIA1054</b>	200 x 5mL clear sterile vial	220 x 20mm ultra-pure sterile serum stopper	220 x 20mm sterile red seal	1229.00	1426.00



## SLS Lab Pro A - Series Analytical Balance



The breeze break has rotary sliding doors that slide behind the balance and can be removed with one touch. This feature, combined with the small footprint, make the balances ideal for applications where space is at a premium.

- Automatic internal calibration
- Reverse backlit LCD display for easy to read weighing results
- Statistical calculation function eliminates the need for a stats printer
- Standard RS-232C
- Fast compact SHS sensor, response time ~ 2 seconds

40%  
OFF



Code	Capacity, g	Readability, mg	Offer Price, £	Offer Price, €
<b>F12428</b>	102	0.1	582.00	675.00
<b>F12430</b>	252	0.1	615.00	713.00

## Sartorius Secura Balances

2  
YEARS



- Integrated protection system
- Real-time alarm messaging and interactive user guidance for levelling
- SQmin for automatic detection and active monitoring to ensure use within the acceptable USP operating range
- Fully automatic internal adjustment function - isoCAL
- Cal audit trail for easy, traceable documentation of all calibration and adjustment data
- Safe and clear documentation
- GLP and GMP compliant printouts
- Standard password security features for protection against tampering and unauthorised access
- Integrated PC direct function and Plug & Work connectivity to a Sartorius printer



Up to  
25%  
OFF

Code	Balance Type	Capacity, g	Readability, mg	Offer Price, £	Offer Price, €
<b>F12204</b>	Analytical	120	0.1	2752.00	3192.00
<b>F12206</b>	Analytical	220	0.1	3056.00	3545.00
<b>F12208</b>	Analytical	320	0.1	3696.00	4287.00
<b>F12210</b>	Semi-micro	120	0.01	4329.00	5022.00
<b>F12212</b>	Semi-micro	120/220	0.01/0.1	4572.00	5304.00
<b>F12214</b>	Micro	21	0.002	12471.00	14466.00



REUSABLE PLASTIC LABWARE

Introducing the new

## Azlon® Round Integral Wash Bottle

- Designed for increased protection against contamination
- Unique vented cap with a PTFE membrane to eliminate hazardous solvent drips
- Available plain or pre-printed with chemical names and information compliant with European safety legislation

Solutions to suit your liquid handling needs

New to the  
Azlon® Wash Bottle  
range...



SciLabware



# OHAUS Scout® Precision Balances

2 YEARS



New design features including a graphic LCD touchscreen. The range gives exceptional weighing results and the choice of either mains or battery operation.

- Applications: weighing (7 units), counting, percent, display hold, totalisation, check weighing, specific gravity/density, dynamic
- Display: 4.3" (109mm) full-colour VGA graphic touchscreen display with user-controlled brightness
- Operation: AC adapter (included) or 4 AA batteries (not included)
- Construction: ABS plastic housing with stainless steel pan



**Save 30% OFF** the entire Ohaus range! See the SLS website for more fantastic Ohaus offers!

Code	Model	Capacity, g	Readability, g	Pan Size, mm	Offer Price, £	Offer Price, €
BAL0041	STX123	120	0.001	93.2	347.00	403.00
BAL0042	STX223	220	0.001	93.2	389.00	451.00
BAL0043	STX222	220	0.01	120	249.00	289.00
BAL0044	STX422	420	0.01	120	284.00	329.00
BAL0045	STX622	620	0.01	120	312.00	362.00
BAL0046	STX1202	1000	0.01	170 x 140	349.00	405.00
BAL0047	STX2202	2000	0.01	170 x 140	389.00	451.00
BAL0048	STX421	400	0.1	120	151.00	175.00
BAL0049	STX621	600	0.1	170 x 140	172.00	200.00
BAL0050	STX2201	2200	0.1	170 x 140	249.00	289.00
BAL0051	STX6201	6200	0.1	170 x 140	329.00	382.00
BAL0052	STX8200	8200	1	170 x 140	235.00	273.00



## SLS Select White Weighing Boats

Supplied in packs of 1000

Code	Description	Offer Price, £	Offer Price, €
F12538	7mL	10.90	12.60
F12540	100mL	22.60	26.20
F12542	250mL	38.20	44.30

**SPECIAL PRICE**

## OHAUS Scout® Portable Balances

2  
YEARS



The updated Scout® portable balances give the same exceptional accuracy and reliability of earlier Scouts along with several new improvements. Easy to use with a 4-button keypad and intuitive, visual menu prompts.

- Application: weighing (7 units), counting, percent, display hold, totalisation, check weigh, specific gravity/density, dynamic
- Display: LCD screen with white LED backlight
- Operation: mains or battery
- Construction: ABS plastic housing with stainless steel pan



**30%  
OFF**  
Entire Range

Code	Model	Capacity, g	Readability, g	Pan Size, mm	Offer Price, £	Offer Price, €
BAL0030	SKX123	120	0.001	93.2	244.00	283.00
BAL0031	SKX222	220	0.01	120	160.00	186.00
BAL0032	SKX422	420	0.01	120	196.00	227.00
BAL0033	SKX622	620	0.01	120	217.00	252.00
BAL0034	SKX1202	1000	0.01	170 x 140	249.00	289.00
BAL0035	SKX2202	2000	0.01	170 x 140	291.00	338.00
BAL0036	SKX421	400	0.1	120	112.00	130.00
BAL0037	SKX621	600	0.1	170 x 140	130.00	151.00
BAL0038	SKX2201	2200	0.1	170 x 140	172.00	200.00
BAL0039	SKX6201	6200	0.1	170 x 140	221.00	256.00
BAL0040	SKX8200	8200	1	170 x 140	172.00	200.00



### Integra Flameboy

Code	Description	Offer Price, £	Offer Price, €
F12340	Flameboy with gas tube nipple	291.00	338.00
F12342	Flameboy with gas cartridge adapter	339.00	393.00

**30%  
OFF**

## Ohaus FC5706 Centrifuge Multi

2 YEARS



A small benchtop multi-function centrifuge ideal for a multitude of spin-down applications. Characterised by reliability, various safety features, the ability to accommodate test tubes of various sizes and intuitive operation.

- A large LCD display and the capabilities to set and view both speed in RPM and g-force
- Can accommodate all standard tube sizes from 1.5mL to 50mL and can hold six 50mL tubes and twelve 15mL tubes during one process
- Sturdy mechanical lid with locking system and a rotor imbalance sensor that stops the centrifuge, protecting the operator from being injured by the high-speed spinning rotors

**30% OFF**  
Entire Range



Code	Speed Range, RPM	Max RCF, x g	Temperature Range, °C	Dims, w x d x h, mm	Offer Price, £	Offer Price, €
<b>CEN2628</b>	200 – 6000	4427	2 – 35	291 x 392 x 266	<b>735.00</b>	<b>853.00</b>

## Ohaus FC5513 Microcentrifuge



A high-speed benchtop microlitre centrifuge capable of generating  $17,317 \times g$  with four optional rotors, designed for a range of essential lab applications. Engineered with convenient operation in mind, the FC5513 features a uniquely designed splash-proof front panel with touch-wheel control on an intuitive interface.

- Modern touch-wheel control on a sleek splash-proof interface
- The compact design saves valuable benchtop space - enclosing all its functionalities within a small footprint
- Speed range 200 – 13,500RPM
- See SLS website for more rotor options

**30% OFF**  
Entire Range



Code	Description	Offer Price, £	Offer Price, €
<b>CEN2066</b>	FC5513 Centrifuge Micro without rotor	<b>875.00</b>	<b>1015.00</b>
<b>CEN2068</b>	FC5513 Centrifuge Micro with 24 x 1.5/2mL fixed angle rotor	<b>945.00</b>	<b>1096.00</b>



## Axyspin Refrigerated Microcentrifuge

Powerful yet silent brushless drive technology. Starting from room temperature, the chamber cools to 4°C in just 8 minutes. The control panel features a back-lit LCD, while the large control knob facilitates digital setting of rotor speed, run time and temperature.

- Speed range 500 to 13,500RPM
- Maximum RCF 17,135 x g
- Maximum capacity 24 x 1.5/2.0mL
- Temperature range -10 to 40°C
- 24 x 1.5/2.0 mL aluminum rotor included



Code	Offer Price, £	Offer Price, €
F12070	1975.00	2291.00

## SLS Flowgen Plate Spinner Centrifuge



Rapidly spins down droplets in PCR or microplates to improve PCR yields or give more consistent assay results. The swing out rotor has two plate carriers that rest at a 75° angle, allowing plates to be inserted confidently without sealing tapes or caps.

- Most samples can be spun down in less than 20 seconds
- Unique swing-out rotor design prevents spillage
- Speed: 2,550RPM/600 x g
- Capacity: 2 x PCR plates (when stacking skirted PCR plates, max. capacity is 4 plates); 2 x microplates
- Dims, w x d x h, mm: 230 x 260 x 197



Code	Offer Price, £	Offer Price, €
F12226	417.00	484.00



### Corning Mini Microcentrifuge

Fixed speed of 6,000RPM (2,000 x g).  
8 x 1.5/2.0mL rotor and 4-place strip tube rotors included.

Code	Offer Price, £	Offer Price, €
F12066	137.00	159.00



# Thermo Scientific Solaris Open Air Orbital Shakers

10  
YEARS

**Thermo**  
SCIENTIFIC

Ruggedly built for demanding use, combining a new ergonomic design with key feature enhancements that help save time, protect your process and drive your science forward. Easily supports heavy loads. Maintenance-free and the shaker mechanism comes with a 10-year warranty.

A variety of easy-to-remove platforms plus associated flask clamps and tube racks to support virtually any capacity are available. Can be operated in microbiological incubators, environmental chambers or refrigerators to meet a wide range of application requirements.



- Compact footprint designed to fit on the bench-top
- Connectivity for easy monitoring
- Units operate in a temperature range of 0°C to 40°C and humidity conditions from 20 to 80% non-condensing
- Unbalanced load sensor with alarms
- Data logging of alerts, alarms and interactions
- Soft-start feature eliminates sudden starts and stops, splashing of vessel contents or wetting of flask closure



Code	Description	Speed Range, RPM	Orbit Ø, cm	Max Load, kg	Overall Dims (l x w x h, without platform), mm	List Price, £	List Price, €
SHA1182	Small shaker 12 x 14 inch universal platform	15 to 525	2.54	25	469 x 364 x 141	3404.00	3949.00
SHA1184	Large shaker 18 x 30 inch universal platform	15 to 525	2.54	43	648 x 573 x 177	6708.00	7781.00

# Introducing, someone you already know.

**Meet Epreidia.** While you may not yet know the name ... you likely recognize **our legacy.**

Epreidia™ is the culmination of nearly a century of a singular focus on advancing technologies and products that enhance precision cancer diagnostics.

We are powered by many of the most-respected names in the industry – Shandon™, Richard-Allan Scientific™, Microm™, Menzel-Gläzer™, and others. Together, these brands represent groundbreaking technologies, a remarkable commitment to quality, and a deep dedication to enabling our customers to achieve diagnostic excellence.

Discover our full portfolio, from specimen collection to processing, sectioning to staining, advanced imaging to archiving, we have solutions that help laboratories work more precisely, efficiently, and accurately.

**We look forward to meeting you. Again.**

© 2019 Epreidia. All rights reserved. All trademarks are the property of Epreidia and its subsidiaries unless otherwise specified. **M60059 0719**



**e

```
idia
```**  
Enhancing precision  
cancer diagnostics

# VelociRuptor V2 Microtube Homogeniser

1  
YEAR



Lyses, grinds and homogenises a broad variety of biological samples. The stainless steel tube carrier subjects up to 24 samples to an optimised, high speed, 3D motion, producing high energy impacts between the samples and micro-beads to release cellular contents. To protect fragile, heat sensitive samples, the unit can be programmed to operate in shortened consecutive cycles with a rest period in between.

- Eliminates the cross-contamination associated with hand-held homogenisers
- Faster and more effective than tissue grinders
- Optional 12 x 5mL tube rotor for larger sample volumes (fits V2 version only)



| Code   | Description                             | Offer Price, £ | Offer Price, € |
|--------|---|----------------|----------------|
| F12548 | VelociRuptor V2 microtube homogeniser   | 3745.00        | 4344.00        |
| F12550 | 12 x 5mL tube rotor for VelociRuptor V2 | 163.00         | 189.00         |

## Accessories

| Code   | Description   | Pack | List Price, £ | List Price, € |
|--------|---|------|---------------|---------------|
| F12552 | Prefilled 2.0mL tubes silica (glass) beads 0.1mm acid washed                | 50   | 92.10         | 107.00        |
| F12554 | Prefilled 2.0mL tubes silica (glass) beads 0.5mm acid washed                | 50   | 92.10         | 107.00        |
| F12556 | Prefilled 2.0mL tubes silica (glass) beads 1.0mm acid washed                | 50   | 92.10         | 107.00        |
| F12558 | Prefilled 2.0mL tubes zirconium beads 0.1mm triple-pure - high impact       | 50   | 128.76        | 149.00        |
| F12560 | Prefilled 2.0mL tubes zirconium beads 0.5mm triple-pure - high impact       | 50   | 128.76        | 149.00        |
| F12562 | Prefilled 2.0mL tubes zirconium beads 1.0mm triple-pure - high impact       | 50   | 128.76        | 149.00        |
| F12564 | Prefilled 2.0mL tubes zirconium beads 1.5mm triple-pure - high impact       | 50   | 128.76        | 149.00        |
| F12566 | Prefilled 2.0mL tubes zirconium beads 3.0mm triple-pure - high impact       | 50   | 128.76        | 149.00        |
| F12568 | Triple-pure (zirconium) starter kit 10 each of 0.1, 0.5, 1.0, 1.5 and 3.0mm | 50   | 128.76        | 149.00        |
| F12570 | Prefilled 2.0mL tubes stainless steel 2.8mm acid washed                     | 50   | 128.76        | 149.00        |
| F12572 | 2.0mL conical bottom sterile PCR clean screw cap micro centrifuge tube      | 500  | 115.00        | 133.00        |
| F12574 | Tubes (empty) with caps and sealing ring                                    | 1000 | 137.00        | 159.00        |
| F12576 | Tubes (empty) with caps and sealing ring                                    | 50   | 34.70         | 40.30         |
| F12578 | Prefilled 5.0mL tubes stainless steel beads 2.8mm acid washed               | 50   | 174.00        | 202.00        |



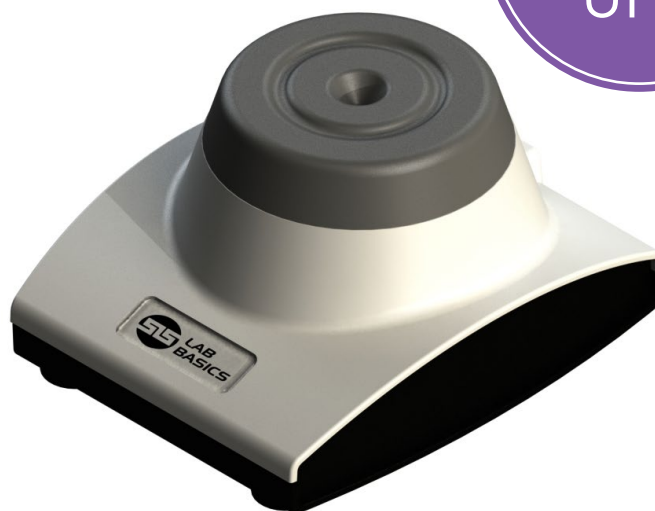
## SLS Lab Basics Mini Vortex Mixer

3  
YEARS



Offers immediate vortex mixing for a variety of tube sizes. A simple, touch start operation enables exceptional mixing performance with one handed operation and shaking stops when the tube is lifted.

- Low profile design and small footprint (only 4.3 inches wide)
- Non-slip feet ensure the unit stays in place while mixing
- Made from durable ABS and silicone materials to resist most commonly used chemicals
- Quiet operation and low vibration
- Can be used with tubes ranging from 2mL to 50mL



40%  
OFF

| Code   | Speed, RPM | Orbit, mm | Weight, kg | Offer Price, £ | Offer Price, € |
|--------|------------|-----------|------------|----------------|----------------|
| F12218 | 4500       | 6         | 0.9        | 77.00          | 89.00          |

## SLS Lab Basics Mini Magnetic Stirrer

3  
YEARS



The low-profile design is lightweight for transporting with ease and the small footprint saves valuable space on a bench top. Offers quiet operation with low vibration, ideal for routine stirring applications. Includes: 2 stir bars 9mm x 35mm, universal power adapter.

40%  
OFF



| Code   | Speed Range, RPM | Capacity, L | Noise level, dB | Weight, kg | Offer Price, £ | Offer Price, € |
|--------|------------------|-------------|-----------------|------------|----------------|----------------|
| F12220 | 200 - 2200       | 3           | 53              | 0.447      | 76.00          | 88.00          |



## Stuart Hotplate Stirrers



Ideal for day-to-day use and offer precise temperature control and stirring speed of samples. Stirring speeds of up to 1400RPM and the ability to mix up to 15L. The front control panel resists spills and the glass is chemically toughened for extra resilience. When plate temperature rises above 50°C, a hot warning light flashes even if the unit is turned off or unplugged. All units feature a fixing point for a retort rod and are BioCote antimicrobial protected. See the SLS website for more colour options!



| Code     | Description                     | List Price, £ | List Price, € |
|----------|---------------------------------|---------------|---------------|
| STI2046K | Analogue aluminium plate, black | 400.00        | 464.00        |
| STI2048K | Analogue ceramic plate, black   | 430.00        | 499.00        |
| STI2068K | Digital aluminium plate, black  | 410.00        | 476.00        |
| STI2072K | Digital ceramic plate, black    | 440.00        | 510.00        |
| STI2076K | Premium aluminium plate, black  | 710.00        | 824.00        |
| STI2078K | Premium ceramic plate, black    | 760.00        | 882.00        |

## SLS Lab Basics LED Trinocular Inverted Microscope



A robust tissue culture microscope with integrated phase contrast. The phase slider is fitted with centrable phase rings plus an open position for brightfield viewing. It features a pair of 10 x super wide-field (FN22) eyepieces, a quintuple position nosepiece, ergonomic coaxial coarse and fine focus and a bright white, adjustable intensity, 3W LED light.

- Objectives: 10 x plan achromatic, brightfield LWD and 10x, 20x, 40x phase contrast plan achromatic LWD
- Optical head with photo port, inclined at 45°
- Interpupillary distance adjustment (siedentopf type): 48 to 75mm
- The Digi-pad camera and tablet has high-definition 9.7 inch colour LCD screen and is equipped with software that allows the user to preview an image, set the white balance, capture images and videos as well as having measurement and annotation capabilities



| Code   | Description                                       | Offer Price, £ | Offer Price, € |
|--------|---|----------------|----------------|
| F12344 | SLS Lab Basics LED trinocular inverted microscope | 1992.00        | 2311.00        |
| F12346 | Microscope mount adapter 38mm                     | 102.00         | 118.00         |
| F12348 | Digi-pad 5mpx camera and tablet                   | 630.00         | 731.00         |



Up to  
**50%  
OFF**

## SLS Select Coverslips

Supplied in packs of 200

| Code   | Description      | Offer Price, £ | Offer Price, € |
|--------|------------------|----------------|----------------|
| F12544 | No 1 22 x 22mm   | 3.86           | 4.48           |
| F12546 | No 1.5 22 x 22mm | 4.80           | 5.57           |

## Motic Panthera L Microscopes

It stands out for its unseen combination of built-in digital capabilities. Its smart CAM digital head and the imaging on device system simplifies daily work, allowing the user to work directly from the microscope to a HDMI screen with the help of a mouse, or work with a tablet and the Panthera App. Panthera L has a list of premium features which include a rackless mechanical stage, interchangeable LED/halogen illumination sources, and a wide variety of available contrast techniques.

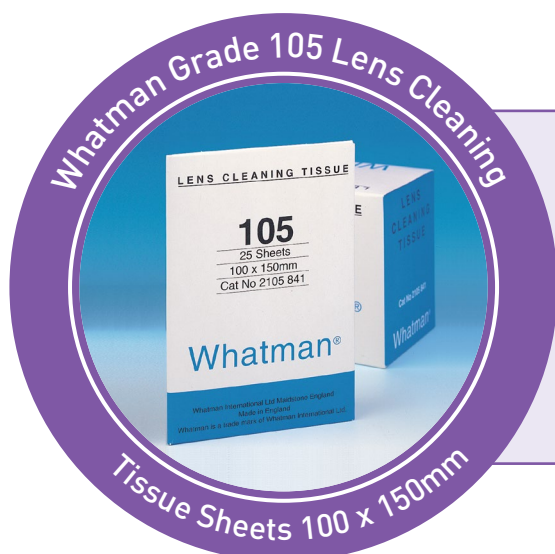


**Motic®**

**30%  
OFF**

- 4X, 10X, 40X and 100X objectives included

| Code   | Description | Camera            | Imaging on Device System | HDMI Display Mode | Offer Price, £ | Offer Price, € |
|--------|-------------|-------------------|--------------------------|-------------------|----------------|----------------|
| F12100 | Panthera L  | Digital Smart Cam | Yes                      | Yes               | 2068.00        | 2399.00        |
| F12102 | Panthera DL | Digital Camera    | No                       | No                | 1626.00        | 1886.00        |



## Whatman Grade 105 Lens Cleaning Tissue Sheets

Supplied in packs of 625

| Code   | Offer Price, £ | Offer Price, € |
|--------|----------------|----------------|
| F12106 | 78.00          | 90.00          |

**30%  
OFF**

## Seward Stomacher 400 EVO



seward  
World leaders in sample preparation

The world's leading laboratory blender for food microbiologists has EVOLved.

- Unique one-touch bag loading system
- Quiet and efficient blending
- Easy clean interior with removable paddles, drip tray and access to paddle chamber
- Designed for use with both standard and new Stomacher 400 ECO bags
- Save up to 25% on annual consumable costs with Seward ECO bags compared to cost of Seward standard bags
- Offer bundle includes: 400 EVO Stomacher, 400 ECO Path. Bags (pk 500), 400 ECO TVC Bags (pk 500), Bag Opener

**30% OFF**  
with FREE  
ECO Bags and  
Bag Opener



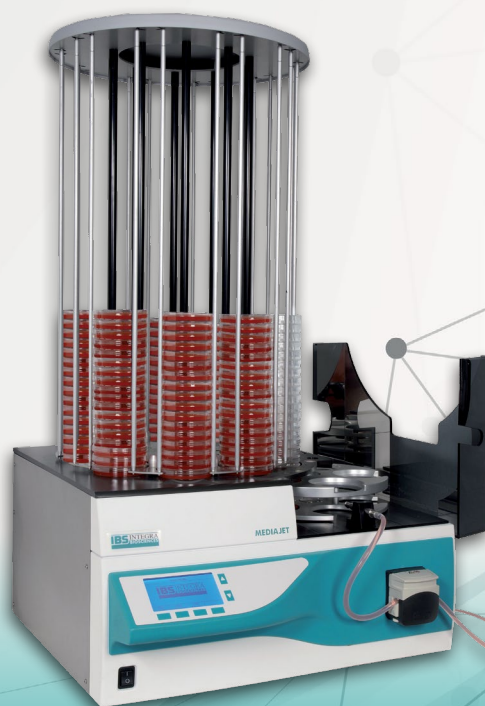
| Code   | Offer Price, £ | Offer Price, € |
|--------|----------------|----------------|
| F12312 | 2245.00        | 2604.00        |

Buy any Integra Mediaclave or Mediajet and get **FREE** installation worth £575

**INTEGRA**



Quote reference  
**FINSTALL**  
when placing  
your order



# Synbiosis ProtoCOL3 Colony Counter with PC

3 YEARS

SYNBIOSIS  
A DIVISION OF THE SYNOPSIS GROUP

Next generation instrument for colony counting, zone measurements, inhibition and antibiotic susceptibility testing (AST), membranes, Petrifilm™ and a range of other applications including: spiral plates, OPKA (opsonophagocytic killing assay), SBA (serum bactericidal assay), Multi-sector, Multi-well, SRD (single radial immunodiffusion) and Ames. The new design now enables plates of up to 150mm diameter to be automatically read at the press of a button. Designed for use across a wide range of applications, ProtoCOL 3 will count colonies as small as 43µm or measure zones accurately to 0.5mm.

**20% OFF**  
plus **FREE**  
Software Module  
worth £452



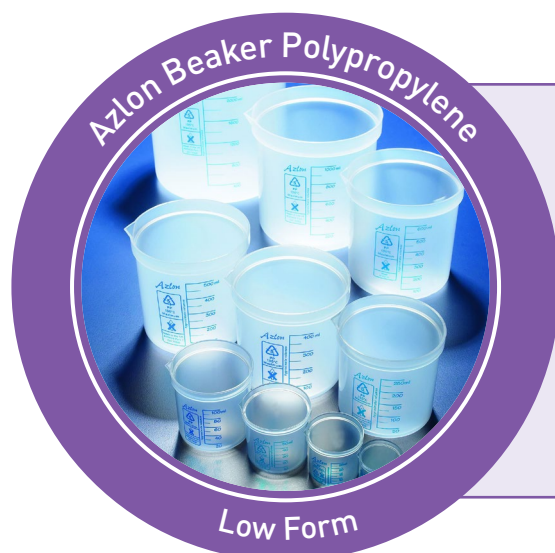
- Unique LED lighting system
- 1.4MP scientific grade CCD camera
- Mounted touchscreen PC

| Code   | Offer Price, £ | Offer Price, € |
|--------|----------------|----------------|
| F12456 | 9302.00        | 10790.00       |

## Software Modules

Choose one of the below software modules for free when you buy a ProtoCOL3 Colony Counter.

| Code   | Description   |
|--------|---|
| F12458 | Amies software module for bacterial reverse mutation    |
| F12460 | Counting software module for spiral plates              |
| F12462 | Multiwell module for multiwell plates                   |
| F12464 | SBA software module for serum bactericidal assay        |
| F12466 | OPKA software module for opsonophagocytic killing assay |
| F12468 | Multisector plates software module                      |



## Azlon Beaker Polypropylene Low Form

SPECIAL OFFER  
**30% OFF**

| Code   | Capacity, mL | Pack | Offer Price, £ | Offer Price, € |
|--------|--------------|------|----------------|----------------|
| F12122 | 250          | 10   | 18.96          | 21.99          |
| F12120 | 1000         | 5    | 17.77          | 20.60          |
| F12118 | 2000         | 1    | 6.27           | 7.27           |



## Lonza FlashGel™ System

**Lonza**

The FlashGel™ System is the fastest way to separate DNA and the only way to watch DNA migration as it happens. Separates DNA in 2 - 7 minutes. Monitor gel runs right at the bench, without UV light. The highly sensitive system allows a 5 -20X reduction in DNA levels. The FlashGel™ System consists of enclosed, disposable, precast agarose gel cassettes and a combination electrophoresis and transilluminator unit. Provides both separation and detection of both DNA and RNA.

Lonza FlashGel™ System contains:

- FlashGel Dock
- FlashGel Camera
- Pack of 1.2% DNA Cassettes
- Loading dye & marker

| Code          | Offer Price, £ | Offer Price, € |
|---------------|----------------|----------------|
| <b>F12082</b> | <b>1227.00</b> | <b>1423.00</b> |



## Accessories

| Code          | Description  | Offer Price, £ | Offer Price, € |
|---------------|--|----------------|----------------|
| <b>F12084</b> | DNA cassette 1.2% agarose 12 + 1 well single-tier 9 pack         | <b>100.00</b>  | <b>116.00</b>  |
| <b>F12086</b> | DNA cassettes 1.2% 2 x 16 + 1 wells 9 pack                       | <b>100.00</b>  | <b>116.00</b>  |
| <b>F12088</b> | DNA cassettes 2.2% 12 + 1 wells 9 pack                           | <b>100.00</b>  | <b>116.00</b>  |
| <b>F12090</b> | DNA cassette 2.2% agarose 16 + 1 well double-tier (34-well) 9 pk | <b>100.00</b>  | <b>116.00</b>  |
| <b>F12092</b> | Recovery cassettes 1.2% agarose 8 + 1 double-tier (18-well) 9 pk | <b>100.00</b>  | <b>116.00</b>  |
| <b>F12094</b> | Recovery cassettes 2.2% agarose 8 + 1 double-tier (18-well) 9 pk | <b>100.00</b>  | <b>116.00</b>  |
| <b>F12096</b> | RNA cassette 1.2% agarose 12 + 1 single-tier 9 pk                | <b>100.00</b>  | <b>116.00</b>  |
| <b>F12098</b> | RNA cassette 1.2% agarose 16 + 1 double-tier (34-well) 9 pk      | <b>100.00</b>  | <b>116.00</b>  |



### Integra DOSE IT Peristaltic Pump

0.1 - 9999mL dose volume.

0.6mL/min - 5L/min flow rate.

1  
YEAR

| Code          | Offer Price, £ | Offer Price, € |
|---------------|----------------|----------------|
| <b>F12338</b> | <b>2262.00</b> | <b>2624.00</b> |

**25%  
OFF**



## NuGenius Gel Documentation System

3 YEARS



Low cost, integrated system for DNA and protein analysis and gel documentation.

Special offer package includes: NuGenius gel doc system and transilluminator (20 x 24cm, 302nm).

- 5 million pixel resolution camera
- Motor driven zoom lens (8 - 48mm f/1.2)
- Integrated 7 inch touch screen
- Built in processor running NuGenius software for image capture and editing
- Dims, w x d x h, mm: 310 x 450 x 750

**15% OFF**  
plus **FREE**  
Transilluminator  
Worth £866



| Code   | Offer Price, £ | Offer Price, € |
|--------|----------------|----------------|
| F12078 | 4522.00        | 5246.00        |

**GREAT PRICES on Molecular Biology Reagents**

**15% OFF List Price**  
Plus **FREE** Delivery on all  
Bioline Products

**Includes:**

PCR Kits and Reagents  
Electrophoresis Ladders and Markers  
Nucleic Acid Purification  
All Bioline branded products

**Offer ends 31st Dec 2019**

Visit the website for more details: [www.analab.co.uk](http://www.analab.co.uk)

**bioline**  
meridian BIOSCIENCE

**Best Brand  
for PCR**

## PCRmax Alpha Cyclers



Available in 1 block or 2 block chassis, the Alpha Cycler interface is Android based, with a large 7" HD touchscreen for responsive control of the software.

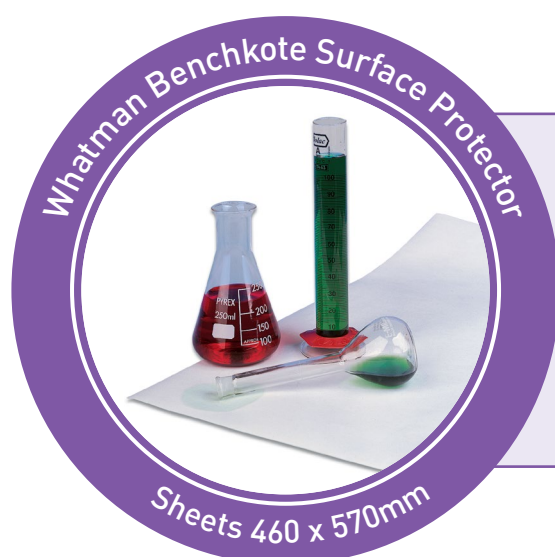
Ideal for multi user environments, users can make any USB device their own login key allowing them to use multiple systems in different locations like a personal unit. Programs can be easily stored, transferred, protected and locked while running.



- Alpha cycler 2 – dual blocks are fully independent and can run different protocols
- Alpha track - remote monitoring can be set to check system performance
- Active sample cooling for sharper amplification and minimal non-specific amplification
- Program wizard - generate a protocol specific to your sequence, template source and amplicon length
- Gradient - allowing for simplified temperature optimisation (1 to 29°C)



| Code          | Description                                   | Offer Price, £ | Offer Price, € |
|---------------|---|----------------|----------------|
| <b>F12108</b> | 1 chassis with a single 96 well block         | 2671.00        | 3098.00        |
| <b>F12110</b> | 1 chassis with a single 384 well block        | 2671.00        | 3098.00        |
| <b>F12112</b> | 2 chassis with two 96 well blocks             | 4530.00        | 5255.00        |
| <b>F12114</b> | 2 chassis with two 384 well blocks            | 4663.00        | 5409.00        |
| <b>F12116</b> | 2 chassis with one 96 and one 384 well blocks | 4663.00        | 5409.00        |



### Whatman Benchkote Surface Protector Sheets

Supplied in packs of 50

| Code          | Offer Price, £ | Offer Price, € |
|---------------|----------------|----------------|
| <b>F12104</b> | 59.00          | 68.00          |



## Tecan Infinite F50 Absorbance Plate Reader

2 YEARS

TECAN.

Ideal for photometric measurements of ELISAs and kinetic assays in the 400 to 750nm wavelength range. The systems' innovative design combines eight measurement channels with long-life LED lamps for fast parallel reading and minimal maintenance costs.

- Ideal for absorbance-based ELISAs, kinetic and multi-label reading
- Ready for qualitative and quantitative data analysis
- Magellan's example files and tutorials enable the user to get started easily
- 405nm, 450nm, 492nm and 620nm filters included
- Eight-channel optics for fast reading
- Reference channel for optimised light intensity
- Long-life LED lamps offer longer maintenance-free operation
- Linear plate shaking

20% OFF



| Code   | Description   | Offer Price, £ | Offer Price, € |
|--------|---|----------------|----------------|
| F12298 | Infinite F50, including 405nm, 450nm, 492nm & 620nm filters and magellan software | 3614.00        | 4192.00        |

## Tecan Sunrise Absorbance Plate Readers

3 YEARS

TECAN.

With Magellan universal reader control and data analysis software add-on, this is an ideal solution for a range of applications, such as ELISAs, enzyme kinetics, cell viability studies, veterinary assays and many more. It supports a broad wavelength range – from 340 to 750nm – and can measure an entire 96-well plate in less than six seconds, ensuring it is ready to meet the needs of routine diagnostic and research labs.

- Ideal for colorimetric ELISAs, kinetic assays and agglutination readings
- Temperature control option for enzyme kinetics
- Tuneable wavelength option for greater flexibility and wavelength scanning



25% OFF

Visit the SLS website for more specifications

| Code   | Description  | Offer Price, £ | Offer Price, € |
|--------|--|----------------|----------------|
| F12300 | Sunrise with 4 filter slide, 405nm, 450nm, 492nm & 620nm filters and magellan software   | 4276.00        | 4960.00        |
| F12302 | Sunrise with 6 filter slide, 405nm, 450nm, 492nm, 540nm, 570nm & 620nm filters and magellan software                             | 4916.00        | 5703.00        |
| F12304 | Sunrise with gradient filter slide, (400nm - 700nm range) and magellan software  | 5790.00        | 6716.00        |
| F12306 | Sunrise with 4 filter slide, 405nm, 450nm, 492nm & 620nm filters, temperature control (42°C) and magellan software               | 5143.00        | 5966.00        |
| F12308 | Sunrise with 6 filter slide, 405nm, 450nm, 492nm, 540nm, 570nm & 620nm filters, temperature control (42°C) and magellan software | 5768.00        | 6691.00        |
| F12310 | Sunrise with gradient filter slide, (400nm - 700nm range), temperature control (42°C) and magellan software                      | 6686.00        | 7756.00        |

## BioDrop UV Vis Spectrophotometers



Delivering rapid, simple and accurate measurement of DNA, RNA, oligo and protein concentration and purity from just 0.5µL of sample. BioDrop's unique technology has no moving parts which ensures excellent accuracy and reproducibility as well as avoiding the need for calibration.

- Light source: pulsed Xenon lamp with a 3 year warranty
- Wavelength range, nm: 190 - 1100
- Absorbance range: 0.3A - 2.5A
- Dimensions, w x d x h, mm: 280 x 410 x 190

25%  
OFF



### BioDrop µLite+

The choice for life scientists for whom speed and accuracy in micro-volume measurements is required.

- In-built sample port allows a quick check of many samples
- Ideal for performing DNA, RNA, oligo and protein quantification and purity measurements
- A great choice for busy labs that need a quick concentration check

| Code   | Description  | Offer Price, £ | Offer Price, € |
|--------|--|----------------|----------------|
| F12452 | BioDrop µLite+ with 0.5mm micro-volume port and built-in printer | 4868.00        | 5647.00        |

### BioDrop Duo+

The ideal solution for those where flexibility of measurement is key.

- In-built sample port for micro-volume measurement
- Ideal for many quick measurements of DNA, RNA or protein across a broad concentration range
- Cuvette holder offers flexibility to measure highly concentrated samples
- Well suited for those performing assays where a broad range of concentrations need to be measured

25%  
OFF

| Code   | Description  | Offer Price, £ | Offer Price, € |
|--------|--|----------------|----------------|
| F12454 | BioDrop Duo+ with 10mm cell holder and 0.5mm micro-volume port | 5678.00        | 6586.00        |

## Jenway 74 Series Spectrophotometers

3 YEARS

Jenway®

For simple photometric concentration. Calculated using a single standard or a factor, quantitation with the ability to create a calibration curve using up to 20 standards, full spectrum scanning, multi-wavelength - up to 4 wavelengths can be measured simultaneously, and kinetics to monitor the change in absorbance over time.

- CPLive technology: safely transfer and store data, protocols, and results to the Cloud
- 7 inch HD colour touchscreen display
- Multiple USB ports for data storage and printer connectivity
- Android operating system, compatible with both Android and IOS devices
- 10GB on board storage
- Spectral bandwidth: 5.0nm

25% OFF



| Code   | Description                   | Wavelength Range, nm | Wavelength Accuracy, nm | Absorbance, A | Offer Price, £ | Offer Price, € |
|--------|-------------------------------|----------------------|-------------------------|---------------|----------------|----------------|
| F12138 | 7410 visible scanning         | 320 to 1000          | +/-2.0                  | -0.3 to 2.5   | 2106.00        | 2443.00        |
| F12140 | 7415 UV/visible scanning      | 198 to 1000          | +/-2.0                  | -0.3 to 2.5   | 2808.00        | 3257.00        |
| F12142 | 7415 Nano UV/visible scanning | 198 to 1000          | +/-2.0                  | 15 to 125     | 3974.00        | 4610.00        |

## Jenway 76 UV/visible Scanning Spectrophotometer

3 YEARS

Jenway®

Split beam optics provides better accuracy and reproducibility. Programmed measurement modes include photometric for single wavelength measurement, concentration using a standard or factor, spectrum for a high purity scan across the entire wavelength range, quantitation with the ability to create a calibration curve using up to 20 standards, kinetics to monitor change over time, as well as multi-wavelength mode.

- CPLive technology: safely transfer and store data, protocols, and results to the Cloud
- 7 inch high-definition colour touchscreen and interface
- Multiple USB ports for data storage and printer connectivity
- 10GB of internal memory
- Spectral bandwidth: 1.5nm

25% OFF



| Code   | Wavelength Range, nm | Wavelength Accuracy, nm | Absorbance, A | Offer Price, £ | Offer Price, € |
|--------|----------------------|-------------------------|---------------|----------------|----------------|
| F12144 | 198 to 1000          | +/-2.0                  | -0.3 to 2.5   | 3713.00        | 4307.00        |



# Sartorius Arium Mini Plus Ultrapure Water System



sartorius

An ultrapure water system for daily requirements of up to 10L of purified water supplied at a flow rate of 1L/min. A 5L bag optimally stores pre-treated pure water for production of Type I ultrapure water.

- Avoid tank cleaning due to unique bagtank technology
- Can be operated even with gloves via a multi-coloured touch display
- With a footprint of only 28cm in width, it fits into any laboratory environment
- Integrated UV lamp (185/254nm) ensures reliable production of ultrapure water that is virtually free of organic components



## Offer Package Includes:

Arium Mini Plus with UV lamp, pre-treatment cartridge, scientific pack for highest ultrapure water quality (ASTM Type 1), 5L bag, biofilter, delivery and installation - requires direct connection to the drinking water supply.

Code

Offer Price, £

Offer Price, €

F12192

3823.00

4435.00



Bioscience Solutions

**Lonza**

## FlashGel™ System

### DNA Electrophoresis and Recovery in Minutes

The FlashGel™ System, gives you great resolution and fast results. Simply load samples, watch bands migrate and get data in as little as 5 minutes. Say goodbye to gel preparation, band excision, purification, and UV light. Complete separation, recovery and documentation safely, at the bench in minutes.

Experience the Speed of the FlashGel™ System

- 5 minute separation and recovery
- Excellent band resolution
- Precast, prestained agarose gels and buffer, no need for gel preparation, buffer addition or gel staining

Visit the website for more details:

[www.analab.co.uk](http://www.analab.co.uk)

## SLS Lab Pro Dual Type 1 and 2 Water Purification Systems



Combines ultrapure and DI water in one unit saving money and space. If installation is required please contact our customer service department.

- Novel recirculation loop to save water usage and separate consumables to extend life and reduce running costs
- Variable speed motor saves energy when not in use - reducing running cost and noise
- Dispenses ultrapure water up to 2L/minute
- Type 2 deionised water dispensed at up to 10L/hour
- Small footprint w x d x h, mm, 490 x 290 x 670
- Main unit wall, bench or reservoir mounted
- Ultra-filtered versions nuclease free and endotoxin <0.001EU/mL



| Code          | Description                                    | Offer Price, £ | Offer Price, € |
|---------------|--|----------------|----------------|
| <b>F12522</b> | Dual type 1 and 2 system with dispense gun     | 4471.00        | 5186.00        |
| <b>F12524</b> | Dual type 1 and 2 system with remote dispenser | 4793.00        | 5560.00        |
| <b>F12526</b> | 30L storage reservoir                          | 411.00         | 477.00         |
| <b>F12528</b> | 60L storage reservoir                          | 502.00         | 582.00         |

## KNF SIMDOS Liquid Dosing Pumps



Offering ease of use for precise metering and continuous transfer of virtually any liquid used in the laboratory. Two flow rates are available, 1 to 100mL/min (Simdos 10) or 100µL to 20mL/min (Simdos 02) and dosing volumes of 0 to 1000mL or 100µL to 999mL respectively.

- Simple and intuitive operation with easy calibration
- Cycle mode
- Adaptable to fluid characteristics
- Self-priming - can run dry
- Analog and impulse control (RC)
- Splash proof to IP65



| Code          | Max. Flow Rate, mL/min | Control Version | Head Material | Offer Price, £ | Offer Price, € |
|---------------|------------------------|-----------------|---------------|----------------|----------------|
| <b>F12146</b> | 20                     | Standard        | Polypropylene | 901.00         | 1045.00        |
| <b>F12148</b> | 20                     | Remote control  | Polypropylene | 1015.00        | 1177.00        |
| <b>F12150</b> | 20                     | Standard        | PTFE          | 1658.00        | 1923.00        |
| <b>F12152</b> | 20                     | Remote control  | PTFE          | 1772.00        | 2056.00        |
| <b>F12154</b> | 100                    | Standard        | Polypropylene | 901.00         | 1045.00        |
| <b>F12156</b> | 100                    | Remote control  | Polypropylene | 1015.00        | 1177.00        |
| <b>F12158</b> | 100                    | Standard        | PTFE          | 1658.00        | 1923.00        |
| <b>F12160</b> | 100                    | Remote control  | PTFE          | 1772.00        | 2056.00        |

## Lancer ULTIMA 1300LX Freestanding Labware Washer Dryer



LANCER

The 1300 LX provides washing and drying on 3 levels with 4 possible rack positions allowing for flexible loading configurations in a compact footprint.

- Large capacity and volume with three levels
- Powerful and rapid HEPA filtered drying through injectors and in chamber
- Increased safety with on-board storage and input of chemicals
- High grade 316L stainless steel chamber
- Exterior dims, w x d x h, mm: 609 x 752 x 1643
- Interior dims, w x d x h, mm: 535 x 520 x 644
- Eco-friendly low energy, chemicals and water usage

**Includes:** delivery, installation, commissioning, detergent pack and 1st year service contract.  
Free PST basic basket and 36IXLC injector basket.



Two **FREE**  
Baskets  
Worth £1580

| Code   | Model  | Offer Price (including racks), £ | Offer Price, € |
|--------|--------|----------------------------------|----------------|
| F12426 | 1300LX | 13350.00                         | 15486.00       |

## Lancer Detergent and Rinse Aid

LANCER

| Code   | Description                  | List Price, £ | List Price, € |
|--------|------------------------------|---------------|---------------|
| F12436 | Lancer clean detergent - 10L | 62.00         | 72.00         |
| F12440 | Lancer rinse aid - 10L       | 40.10         | 46.50         |

Place an order  
for one and we'll  
send another for  
**FREE**

Up to  
**39%**  
OFF

SLS Lab Basics Mini Vacuum Pumps



Special Offer

## SLS Lab Basics Mini Vacuum Pumps



| Code   | Diaphragm Material | Delivery, L/min | Ultimate Vacuum, mbar. Abs | Offer Price, £ | Offer Price, € |
|--------|--------------------|-----------------|----------------------------|----------------|----------------|
| F12334 | EPDM rubber        | 6               | 100                        | 195.00         | 226.00         |
| F12336 | PTFE coated        | 5.5             | 160                        | 215.00         | 249.00         |

## Liebherr Mediline Refrigerators and Freezers

**LIEBHERR**  
Quality, Design and Innovation

Large capacity and purpose built for the laboratory where constant use in demanding working conditions often occurs. The advanced electronic controller comes with a variety of visual and audible fault warning alarms and can store three alarm events. Temperature is accurate to 0.1°C and shown in real time.

- Automatic defrost
- Digital temperature display
- Integrated data memory
- RS 485 volt free contact interface
- Door lock and self-closing door
- Environmentally friendly refrigerant used

**25%  
OFF**

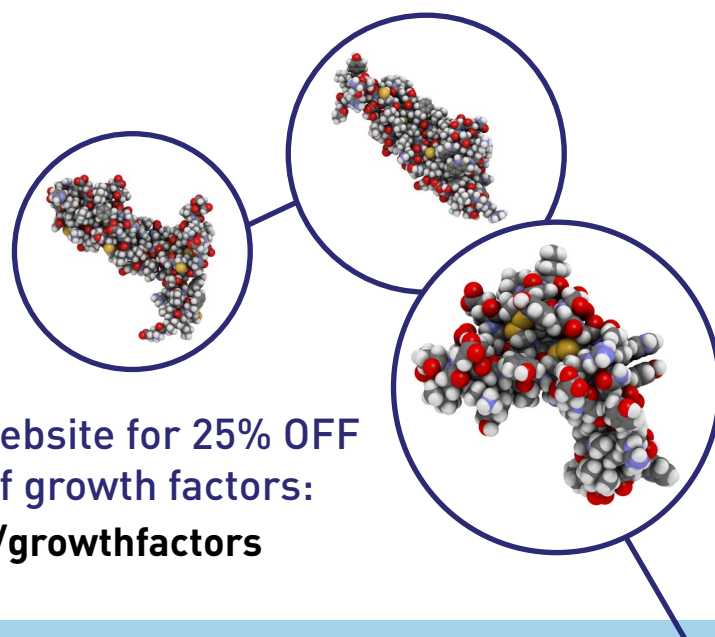


| Code          | Description            | Temperature Range, °C | Capacity, L | Dims, w x d x h, mm | Max No. Shelves / Drawers | Offer Price, £ | Offer Price, € |
|---------------|------------------------|-----------------------|-------------|---------------------|---------------------------|----------------|----------------|
| <b>F12072</b> | LGv5010 freezer        | -9 to -35             | 478         | 747 x 750 x 1844    | 5 / 10                    | <b>1949.00</b> | <b>2261.00</b> |
| <b>F12074</b> | LKv5710 refrigerator   | +3 to +16             | 583         | 747 x 750 x 1844    | 5 / -                     | <b>1499.00</b> | <b>1739.00</b> |
| <b>F12076</b> | LCv4010 fridge freezer | +3 to +16 / -9 to -30 | 361         | 597 x 615 x 2003    | 5 & 3                     | <b>1462.00</b> | <b>1696.00</b> |

## 25% OFF Sigma-Aldrich Growth Factors

From purified recombinant growth factors for serum free cell culture to tissue extracts and growth supplements, Sigma-Aldrich delivers the products you need and the support you demand.

**25%  
OFF**



Visit the Analab website for 25% OFF  
a wide selection of growth factors:  
[www.analab.co.uk/growthfactors](http://www.analab.co.uk/growthfactors)

## WTW Inolab® Multi 9310 IDS Multiparameter Benchtop Meter

3  
YEARS



Suitable for digital measurements of pH, ORP, dissolved oxygen (optical), BOD, conductivity and turbidity in the lab. Use the new wireless modules together with the new IDS plug head sensors to be independent from cables. The IDS technology allows optimised measurements and efficient documentation in the simplest manner.

- Uncompromised measuring accuracy
- Wireless ready
- Digital sensor recognition
- For measurements/documentation according GLP/AQA
- Supplied with stand



| Code   | Offer Price, £ | Offer Price, € |
|--------|----------------|----------------|
| F12282 | 752.00         | 872.00         |

### Accessories

| Code   | Description   | Offer Price, £ | Offer Price, € |
|--------|---|----------------|----------------|
| F12284 | Sentix 980-P IDS pH electrode suitable for general biological applications                          | 178.00         | 206.00         |
| F12286 | Connection cable to attach Sentix 980 to meter 1.5m   | 54.00          | 63.00          |
| F12288 | Wireless IDS Kit - wireless module for sensor and meter, USB charger and universal USB power supply | 230.00         | 267.00         |

## Hanna Bench Top pH Meter with pH Electrode, Temperature Probe and mV Meter

2  
YEARS



Bench pH meter designed for every-day use by technical and non-technical staff alike. A two button calibration procedure with pre-programmed buffers and step by step calibration guide, along with a stability indicator help the user to gain accurate results simply and efficiently.

- pH range: -2 to 16pH with 0.01pH resolution
- Temperature range: -9.9 to 120°C
- Automatic pH calibration: 1 or 2 point with 5 memorised buffer values
- Dims, l x w x h, mm: 240 x 182 x 74
- Includes: general purpose glass pH electrode, temperature probe, electrode stand, calibration and cleaning solution sachets and power lead



20%  
OFF

| Code   | Offer Price, £ | Offer Price, € |
|--------|----------------|----------------|
| F12444 | 344.00         | 399.00         |



**KIMTECH™**

# BE YOUR BEST

➤ **WE'VE GOT  
YOU COVERED**



At Kimtech™, we understand it's critical you get the best possible protection for your people and processes.

That's why we're proud to reintroduce our world-class protective solutions and services. Our compliant product range has got you covered – so you can concentrate on what you do best.

Discover the Kimtech™ range  
[www.analab.co.uk](http://www.analab.co.uk)

## Orion Star A211 pH Benchtop Standard ROSS Meter Kit

3  
YEARS

**Thermo**  
SCIENTIFIC

Record accurate and reliable pH, mV, ORP and temperature measurements, ideal for a wide range of applications and advanced pH analysis in the lab. Perform up to a five point pH calibration, log up to 2000 data point sets with time/date stamp and easily transfer calibration and data logs via USB or RS232 to a printer or computer with FREE downloadable Orion Star Com software.

- Kit includes: Star A211 pH meter, ROSS Ultra Triode glass-body pH/ATC electrode, ROSS pH buffer and solution kit, electrode stand, universal power adapter, literature CD, printed quick start guide, computer interface cable and meter test certificate
- pH range: -2.000 to 20.000
- pH accuracy:  $\pm 0.002$ pH



**30%  
OFF**

| Code          | Description                              | Offer Price, £ | Offer Price, € |
|---------------|--|----------------|----------------|
| <b>F12320</b> | A211 pH Benchtop Standard ROSS Meter Kit | <b>565.00</b>  | <b>655.00</b>  |

## Orion ROSS pH Electrodes

- pH range: 0 – 14
- Precision: 0.01
- Temperature range: 0 – 100°C
- Dims, mm: 120 x 12

**10% OFF  
and FREE  
pH Buffer Kit**



**Thermo**  
SCIENTIFIC

| Code          | Description  | Material                 | Junction    | Connection          | Offer Price, £ | Offer Price, € |
|---------------|--|--------------------------|-------------|---------------------|----------------|----------------|
| <b>F12322</b> | Combination pH electrode                             | Glass                    | Ceramic     | BNC                 | <b>211.00</b>  | <b>245.00</b>  |
| <b>F12324</b> | Sure-flow pH electrode with sure-flow junction       | Glass                    | Sure-flow   | BNC                 | <b>293.00</b>  | <b>340.00</b>  |
| <b>F12326</b> | Ultra pH electrode                                   | Glass                    | Ceramic     | BNC                 | <b>276.00</b>  | <b>320.00</b>  |
| <b>F12328</b> | Ultra refillable pH/ATC triode combination electrode | Epoxy                    | Glass fibre | BNC / 8-pin MiniDIN | <b>311.00</b>  | <b>361.00</b>  |
| <b>F12330</b> | Ultra glass pH/ATC triode combination electrode      | Chemical resistant glass | Ceramic     | BNC / 8-pin MiniDIN | <b>321.00</b>  | <b>372.00</b>  |

## Astell Ecofill Benchtop Autoclaves



One of the most energy efficient autoclaves available.

The pressure vessel design ensures the absolute minimum amount of water is used during a sterilisation cycle, which not only means comparably low power consumption, but also very quick heating and cooling.

The Ecofill units have an integral reservoir and an in-built autofill water re-circulation system. Once the reservoir is filled, this provides water for up to 15 cycles, and also acts as a collection vessel for condensate. The water is automatically returned from the chamber at the end of each cycle, minimising water usage.



| Code   | Volume, L | Offer Price, £ | Offer Price, € |
|--------|-----------|----------------|----------------|
| F12130 | 33        | 5515.00        | 6397.00        |
| F12132 | 43        | 6354.00        | 7371.00        |
| F12134 | 63        | 7382.00        | 8563.00        |



### SLS Select Autoclave Tape Supplied in singles

| Code   | Description | Offer Price, £ | Offer Price, € |
|--------|-------------|----------------|----------------|
| F12222 | 19mm x 50m  | 3.60           | 4.18           |
| F12224 | 24mm x 50m  | 3.60           | 4.18           |

**SPECIAL  
PRICE**



## LEEC Culture Safe Precision CO<sub>2</sub> Incubators

2 YEARS



The LEEC Culture Safe Precision CO<sub>2</sub> incubators have a fully sealed, electro-polished, one-piece, deep drawn chamber, manufactured from the high grade 304 stainless steel. The outer cabinet is manufactured from stainless steel, and has an anti-bacterial powder coat paint finish.

- Fan-less air circulation  
(decreases contamination risk)
- Simple control system
- HEPA filtered gas inlet
- 160°C dry-heat decontamination option (P190D only)
- Temperature range: +5 to +60°C

Up to  
**36%  
OFF**



| Code          | Description  | Capacity, L | Ext. Dims, w x d x h, mm | Offer Price, £ | Offer Price, € |
|---------------|--|-------------|--------------------------|----------------|----------------|
| <b>F12446</b> | P50 Precision CO <sub>2</sub> incubator                            | 50          | 534 x 460 x 736          | <b>2495.00</b> | <b>2894.00</b> |
| <b>F12448</b> | P190 Precision CO <sub>2</sub> incubator                           | 190         | 765 x 740 x 862          | <b>2895.00</b> | <b>3358.00</b> |
| <b>F12450</b> | P190D Precision CO <sub>2</sub> incubator with 160°C sterilisation | 190         | 765 x 740 x 862          | <b>3050.00</b> | <b>3538.00</b> |

## Lovibond Thermostatic Incubators

2 YEARS



For continuous temperature control. Sockets are incorporated in the interior of the cabinet for devices which require a power supply. Improved insulated housing and highly efficient components provide maximum energy efficiency.

- Temperature range 2°C to 40°C, adjustable in steps of 0.1°C
- Low power consumption
- Illuminated LED display of pre-set and current temperatures
- Ideal for BOD determination at 20°C
- S models have standard door, G models have glass door

**30%  
OFF**



| Code          | Description | No. of Sockets | Capacity, L | No. of Shelves | Ext. Dims, w x d x h, mm | Offer Price, £ | Offer Price, € |
|---------------|-------------|----------------|-------------|----------------|--------------------------|----------------|----------------|
| <b>F12272</b> | TC 135 S    | 4              | 135         | 3              | 600 x 600 x 850          | <b>1265.00</b> | <b>1467.00</b> |
| <b>F12274</b> | TC 255 S    | 7              | 255         | 4              | 600 x 610 x 1640         | <b>1766.00</b> | <b>2049.00</b> |
| <b>F12276</b> | TC 445 S    | 9              | 445         | 4              | 750 x 730 x 1640         | <b>2196.00</b> | <b>2547.00</b> |
| <b>F12278</b> | TC 140 G    | 4              | 140         | 3              | 600 x 600 x 850          | <b>1472.00</b> | <b>1708.00</b> |
| <b>F12280</b> | TC 256 G    | 7              | 255         | 4              | 600 x 610 x 1640         | <b>1901.00</b> | <b>2205.00</b> |

## SLS Flowgen Compact Shaking Incubator

2 YEARS



The INCU-SHAKER™ Mini is a compact shaking incubator, offering a large work space which can accept several platforms for use with a variety of flasks, tubes and other common vessels. Temperature, shaking speed and run time are displayed on the large LED control panel located on the front side of the unit. The standard platform (included) features a non-slip rubber coated surface, ideal for tissue culture flasks, petri dishes and staining trays. Exchange flask clamps in one second with the optional MAGicClamp™ magnetic platform.

- Exterior dimensions, w x d x h, cm: 28 x 48 x 33
- Platform dimensions, cm: 28 x 41 x 33
- Operating temperature range: +4 to +65°C
- Shaking orbit: 19mm
- Shaking speed range: 30 to 300RPM



Over  
**30% OFF**

| Code          | Description              | Offer Price, £ | Offer Price, € |
|---------------|--------------------------|----------------|----------------|
| <b>F12580</b> | Flowgen INCU-SHAKER Mini | 1791.00        | 2078.00        |

## Accessories

| Code          | Description                           | Offer Price, £ | Offer Price, € |
|---------------|---------------------------------------|----------------|----------------|
| <b>F12582</b> | Flowgen MAGicClamp Universal Platform | 166.00         | 193.00         |
| <b>F12584</b> | Clamp 500mL for Flowgen Incu-shaker   | 26.00          | 30.20          |
| <b>F12586</b> | Clamp 1L for Flowgen Incu-shaker      | 39.00          | 45.20          |



## Azlon Beaker Polypropylene Moulded Graduations

Supplied in packs of 10

| Code          | Capacity, mL | Offer Price, £ | Offer Price, € |
|---------------|--------------|----------------|----------------|
| <b>F12124</b> | 100          | 9.17           | 10.60          |
| <b>F12126</b> | 250          | 13.20          | 15.30          |
| <b>F12128</b> | 500          | 20.70          | 24.00          |

SPECIAL OFFER  
**30% OFF**



# Thermo Scientific MSC Advantage Class II Biological Safety Cabinets



Combining smart design with best-in-class energy efficiency, reliability and usability resulting in an overall improvement to operation and maintenance. Units feature 60% less energy consumption and heat output. Cabinets are certified to EN 12469 safety standard.

- Energy efficient DC motor technology
- Ergonomically angled cabinet front
- Easy to read control panel
- Manual sliding sash
- Divided stainless-steel work tray removes easily for cleaning or autoclaving
- Electrical sockets – one double (0.9 and 1.2), two double (1.5 and 1.8)
- Available with a fixed height stand of 680mm which provides a work height of 750mm, or an adjustable height stand of 680-880mm which gives a work height of 750-950mm in 50mm adjustable increments
- Stands sold separately



Offer prices include extended 5 year warranty and installation – **worth over £2000!**  
Does not include delivery and siting.

**30% OFF**

| Code          | Description       | Ext. Dims, w x d x h, mm | Offer Price, £ | Offer Price, € |
|---------------|-------------------|--------------------------|----------------|----------------|
| <b>F12290</b> | MSC-Advantage 0.9 | 1000 x 800 x 1520        | <b>5940.00</b> | <b>6890.00</b> |
| <b>F12292</b> | MSC-Advantage 1.2 | 1300 x 800 x 1520        | <b>6275.00</b> | <b>7279.00</b> |
| <b>F12294</b> | MSC-Advantage 1.5 | 1600 x 800 x 1520        | <b>7030.00</b> | <b>8155.00</b> |
| <b>F12296</b> | MSC-Advantage 1.8 | 1900 x 800 x 1520        | <b>7195.00</b> | <b>8346.00</b> |

## Compatible Stands

| Cabinet       | Fixed Stand | List Price, £ | List Price, € | Adjustable Stand | List Price, £ | List Price, € |
|---------------|-------------|---------------|---------------|------------------|---------------|---------------|
| <b>F12290</b> | CAB2628     | 616.00        | 715.00        | CAB2636          | 741.00        | 860.00        |
| <b>F12292</b> | CAB2630     | 624.00        | 724.00        | CAB2670          | 860.00        | 998.00        |
| <b>F12294</b> | CAB2632     | 737.00        | 855.00        | CAB2640          | 936.00        | 1086.00       |
| <b>F12296</b> | CAB2634     | 744.00        | 863.00        | CAB2642          | 996.00        | 1155.00       |

# Taylor Wharton XL Series Storage and Transport Cylinders

5  
YEARS

**WORTHINGTON**  
INDUSTRIES  
CRYOSCience by Taylor-Wharton®

Storage and transport cylinders for liquefied gases.

- Inner and outer vessels made of stainless steel
- All vessels comply with EU Directive 1999/36/EC for Transportable Pressure Equipment (TPED)
- Available with and without pressure building
- Full circle shock-mount ring
- 5 year warranty on vacuum

**20% OFF**  
plus FREE  
Transfer Hose  
worth £263



## Low Pressure for Liquid Withdrawal

- Max working pressure 1.5 bar

| Code          | Model          | Net Capacity, L | Dims, h x Ø, mm | Liquid Withdrawal Rate L/min | Evaporation Rate N <sub>2</sub> %/Day | Pressure Build | Offer Price, £ | Offer Price, € |
|---------------|----------------|-----------------|-----------------|------------------------------|---------------------------------------|----------------|----------------|----------------|
| <b>F12470</b> | XL70 PB CE     | 67              | 1115 x 508      | 6                            | 3.5                                   | Yes            | 3514.00        | 4076.00        |
| <b>F12472</b> | XL120 CE       | 120             | 1350 x 508      | 6                            | 2.3                                   | No             | 3386.00        | 3928.00        |
| <b>F12474</b> | XL120 PB CE    | 120             | 1350 x 508      | 6                            | 2.4                                   | Yes            | 3739.00        | 4337.00        |
| <b>F12476</b> | XL160 CE       | 160             | 1464 x 508      | 6                            | 1.5                                   | No             | 2993.00        | 3472.00        |
| <b>F12478</b> | XL180/20 CE    | 180             | 1635 x 508      | 6                            | 1.3                                   | No             | 3098.00        | 3594.00        |
| <b>F12480</b> | XL180/26 CE    | 181             | 1280 x 660      | 15                           | 1.3                                   | No             | 3806.00        | 4415.00        |
| <b>F12482</b> | XL180/26 PB CE | 181             | 1280 x 660      | 15                           | 1.3                                   | Yes            | 4223.00        | 4899.00        |
| <b>F12484</b> | XL240 CE       | 240             | 1510 x 660      | 20                           | 1.4                                   | No             | 4081.00        | 4734.00        |
| <b>F12486</b> | XL240 PB CE    | 240             | 1510 x 660      | 20                           | 1.4                                   | Yes            | 4493.00        | 5212.00        |

## Medium and High Pressure for Gas and Liquid Withdrawal

| Code          | Model       | Net Capacity, L | Dims, h x Ø, mm | Gas Withdrawal Rate N <sub>2</sub> /m <sup>3</sup> /hr | Evaporation Rate O <sub>2</sub> %/Day | Max Working Pressure bar | Offer Price, £ | Offer Price, € |
|---------------|-------------|-----------------|-----------------|--|---------------------------------------|--------------------------|----------------|----------------|
| <b>F12488</b> | XL 45 CE    | 169             | 1562 x 508      | 9.2  | 1.2                                   | 15.9                     | 3107.00        | 3604.00        |
| <b>F12490</b> | XL 45 HP CE | 165             | 1559 x 508      | 9.2  | 1.4                                   | 24                       | 3308.00        | 3837.00        |
| <b>F12492</b> | XL 50 CE    | 176             | 1614 x 508      | 9.2  | 1.1                                   | 15.9                     | 3189.00        | 3699.00        |
| <b>F12494</b> | XL 55 HP CE | 198             | 1764 x 508      | 9.2  | 1.2                                   | 24                       | 3719.00        | 4314.00        |
| <b>F12496</b> | XL 65 HP    | 240             | 1476 x 660      | 9.2  | 1.5                                   | 24                       | 5248.00        | 6088.00        |

# Introducing, someone you already know.

**Meet Epredia.** While you may not yet know the name ... you likely recognize **our legacy**.

Epredia™ is the culmination of nearly a century of a singular focus on advancing technologies and products that enhance precision cancer diagnostics.

We are powered by many of the most-respected names in the industry – Shandon™, Richard-Allan Scientific™, Microm™, Menzel-Gläzer™, and others. Together, these brands represent groundbreaking technologies, a remarkable commitment to quality, and a deep dedication to enabling our customers to achieve diagnostic excellence.

Discover our full portfolio, from specimen collection to processing, sectioning to staining, advanced imaging to archiving, we have solutions that help laboratories work more precisely, efficiently, and accurately.

**We look forward to meeting you. Again.**



**epredia**  
Enhancing precision  
cancer diagnostics

ANALAB IRELAND PRESENTS

# FOCUS

EXCLUSIVE OFFERS & EXCITING NEW PRODUCTS

See page 19...

**30%  
OFF**

## **Ohaus FC5706 Centrifuge Multi**

A small benchtop multi-function centrifuge ideal for a multitude of spin-down applications. Reliable, safe and intuitive



## AUTUMN EDITION

Analab Northern Ireland  
Rathdown Close  
Lissue Industrial Estate West  
Lisburn, Co. Antrim  
BT28 2RB

t. (Lisburn) 028 9262 1100  
t. (Dublin) 01 4069 464

[www.analab.co.uk](http://www.analab.co.uk) or [www.analab.ie](http://www.analab.ie)