

FOCUS

EXCLUSIVE OFFERS & EXCITING NEW PRODUCTS

GREAT NEW OFFERS INSIDE:

Stuart Hotplate Stirrers

Ideal for day-to-day use

(See page 25)

Wheaton CompletePak Kits

Vials, stoppers and seals

(See page 14)

BioDrop UV Vis Spectrophotometer

Delivering rapid, simple and accurate measurement of various samples



25%
OFF

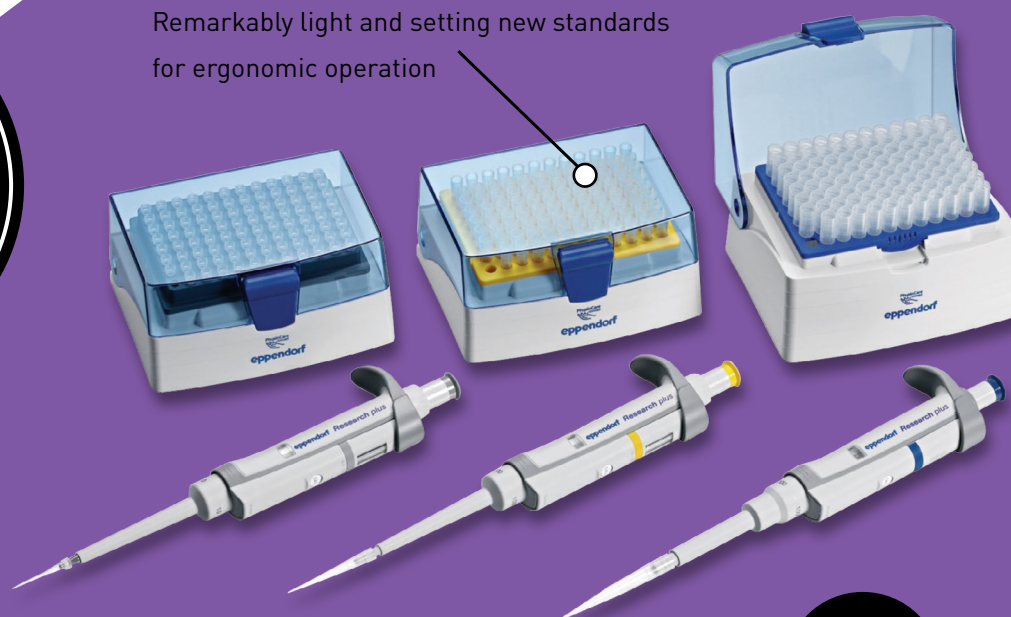
See page 33...

See page 3...

23%
OFF

Eppendorf Research Plus Pipettes

Remarkably light and setting new standards for ergonomic operation



1st Sep - 31st Dec

2019

Brought to you by Ireland's totally independent
supplier of scientific products

WELCOME

FOCUS

September 2019 Edition

Now firmly established as THE promotions brochure for laboratories, FOCUS goes from strength to strength.

This edition promises great savings on a huge range of equipment, consumables and reagents. Whatever your discipline you are sure to find a product at a budget to suit your needs!

Remember: These offers are EXCLUSIVE to Analab and valid until 31st December 2019

Suppliers



KEY to product symbols:

- Length of warranty
- No. years warranty can be extended
- Lifetime warranty
- Sustainable features



KEY Highlights



Gilson Microman
E Pipettes
See page 10



Flowgen Plate
Spinner Centrifuge
See page 20



PCRmax Alpha
Cyclers
See page 31



Sartorius Arium
Mini Plus Ultrapure
Water System
See page 35



Lancer ULTIMA 1300LX
Freestanding Labware
Washer Dryer
See page 37



LEEC Culture Safe
Precision CO₂ Incubators
See page 43

Eppendorf Research Plus Single-Channel Pipettes 3-Packs

3
YEARS

Remarkably light, both in terms of weight and pipetting forces, setting new standards for ergonomic operation. A spring-loaded tip cone, a secondary adjustment option, and an improved volume display in an ultra-light, fully autoclavable pipette. SOFTeject reduces tip ejection forces by 50%.



Code	Description	Offer Price, £	Offer Price, €
F12350	Research Plus 3-pack option 1	407.00	472.00
F12352	Research Plus 3-pack option 2	407.00	472.00
F12354	Research Plus 3-pack option 3	407.00	472.00

Option 1 includes: 3 pipettes – Eppendorf Research plus (0.5-10µL, 10-100µL, 100-1000µL), 3 x 96 epT.I.P.S. pipette tips in refill boxes, 1 x pipette pen, 1 x SOP.

Option 2 includes: 3 pipettes – Eppendorf Research plus (2-20µL, 20-200µL, 100-1000µL), 3 x 96 epT.I.P.S. pipette tips in refill boxes, 1 x pipette pen, 1 x SOP.

Option 3 includes: 3 pipettes – Eppendorf Research plus (100-1000µL, 0.5-5mL, 1-10mL), 1 x 96 epT.I.P.S. pipette tips in refill box 1000µL, 1 sample bag 5µL tips, 1 sample bag 10µL tips, 1 x pipette pen, 1 x SOP.



SLS Select Alcohol Wipes 200 x 200mm

200 wipes per tub

Code	Offer Price, £	Offer Price, €
F12530	3.60	4.18

SPECIAL OFFER

**70%
OFF**

Eppendorf CellXpert C170 and C170i CO₂ Incubators



Ensuring the reproducibility of experiments by minimising atmospheric fluctuations inside the incubator, with fast temperature and CO₂ recovery in less than 5 minutes without overshoot and advanced microprocessor control. Featuring a fan-less design for increased capacity, lower operating costs, and less opportunity for contamination.

- No internal HEPA-filters that potentially contaminate the chamber after HTD
- Seamless, stainless-steel interior to minimise possible points of contamination
- Dual-channel infrared CO₂ sensor
- Intuitive user interface
- Capacity: 70L
- Temperature range +4 to +50°C
- CO₂ range 0.1 to 20%
- External dims, w x d x h, mm, 718 x 715 x 900
- Internal dims, w x d x h, mm, 539 x 445 x 692

18% OFF

Buy 2 and get **FREE** Lower and Upper Stacking Stand worth over £1000

+FREE Delivery



Code	Description	Display	High Temperature Disinfection, °C	No. of Shelves (standard/ max)	On Board Data Logging	Offer Price, £	Offer Price, €
F12410	C170i CO ₂ incubator touch screen handle right side	Touch screen	180	4/8	Yes	6215.00	7209.00
F12412	C170i CO ₂ incubator touch screen handle left side	Touch screen	180	4/8	Yes	6215.00	7209.00
F12414	C170i CO ₂ incubator touch screen handle right side - copper	Touch screen	180	4/8	Yes	8626.00	10006.00
F12416	C170i CO ₂ incubator touch screen handle left side - copper	Touch screen	180	4/8	Yes	8626.00	10006.00
F12420	C170 CO ₂ incubator standard display handle right side	Standard LED display	140	3/8	No	5310.00	6160.00

FREE Eppendorf Multipette M4 when you buy 7 Packs of Combitips Advanced



Offering a unique volume range of 1µL - 10mL and is the only mechanical dispenser that dispenses the aspirated liquid up to 100 times without refilling the tip.

- Repetitive dispensing of volumes in long series
- Contamination-free dispensing of hazardous liquids
- Precise and accurate dispensing of viscous solutions e.g. glycerol, or liquids with high vapour pressure e.g. ethanol
- Purchase 7 packs of Combitips Advanced from the list below at your normal price to receive a FREE Multipette M4 (Multipette and Combitips shipped separately)

Combitips are supplied in packs of 100

Combitips Advanced - Eppendorf Quality

High precision and accuracy guaranteed by precise moulding and testing.

Code	Colour	Volume, mL	List Price, £	List Price, €
F12356	White	0.1	78.28	91.00
F12358	Light blue	0.2	78.28	91.00
F12360	Purple	0.5	78.28	91.00
F12362	Yellow	1.0	78.28	91.00
F12364	Green	2.5	78.28	91.00
F12366	Blue	5.0	78.28	91.00
F12368	Orange	10.0	78.28	91.00
F12370	Red	25.0	92.89	108.00
F12372	Light grey	50.0	102.08	118.00

Combitips Advanced - PCR Clean

Certified free of DNases, RNases, nucleic acids and PCR inhibitors.

Code	Colour	Volume, mL	List Price, £	List Price, €
F12374	White	0.1	99.02	115.00
F12376	Light blue	0.2	99.02	115.00
F12378	Purple	0.5	99.02	115.00
F12380	Yellow	1.0	99.02	115.00
F12382	Green	2.5	99.02	115.00
F12384	Blue	5.0	99.02	115.00
F12386	Orange	10.0	99.02	115.00
F12388	Red	25.0	116.29	135.00
F12390	Light grey	50.0	125.50	146.00



Combitips Advanced - Biopur

Guaranteed to be sterile and free of pyrogens, RNases, DNases, DNA and ATP as well as PCR inhibitors. Individually wrapped.

Code	Colour	Volume, mL	List Price, £	List Price, €
F12392	White	0.1	143.91	167.00
F12394	Light blue	0.2	143.91	167.00
F12396	Purple	0.5	143.91	167.00
F12398	Yellow	1.0	143.91	167.00
F12400	Green	2.5	143.91	167.00
F12402	Blue	5.0	143.91	167.00
F12404	Orange	10.0	143.91	167.00
F12406	Red	25.0	168.34	195.00
F12408	Light grey	50.0	181.66	211.00



Raise the Limits

Eppendorf Research® plus

Eppendorf sets standards in ergonomics! This ultralight pipette meets the highest needs in precision and accuracy – combined with ultimate ergonomics and increased flexibility.

A spring-loaded tip cone, a secondary adjustment option, an improved volume display – and all that in an ultra light, fully autoclavable pipette.

- > Ideal ergonomics:
Eppendorf PhysioCare Concept®
- > Ultra light with minimal pipetting and ejection forces
- > Spring-loaded tip cone
- > Available as single-channel pipette with fixed and variable volume as well as 8-, 12-, 16- and 24-channel pipette



www.analab.co.uk

Eppendorf Centrifuge Bottles

eppendorf

A reusable solution for large-volume, low-speed applications. The new bottles extend the application range of large benchtop centrifuge 5910 R. The 1000mL bottle was specially designed for swing-bucket rotor S-xUniversal and upgrades centrifuge 5910 R into a 4L system. The 400mL bottle fits into swing-bucket rotor S-4x400.



- Bottles and lids autoclavable at 121°C, UV-resistant and dishwasher-proof
- Tight seal and easy to open and close
- Compatible with optional aerosol-tight caps for the safe handling of hazardous substances
- Material: polypropylene



Supplied in packs of 2

Code	Description	Dims, Ø x h, mm	Max RCF, x g	List Price, £	List Price, €
E5910707002	400mL bottle	81 x 117	5030	153.00	177.00
E5910770006	1000mL bottle	118 x 133	4256	153.00	177.00
E5910706006	Adapter for 400mL bottle for S 4x400 rotor	-	-	183.00	212.00
E5910756003	Adapter for 1000mL bottle for rotor S-4xUniversal	-	-	217.00	252.00

Eppendorf Conical Tubes 25mL

eppendorf

Premium raw materials, without the use of plasticisers or biocides during manufacturing ensure the highest sample integrity. High g-Safe centrifugation stability up to 17,000 x g, lid tightness from -86°C up to 100°C as well as optimal sample and pellet visibility are assured.

- ~20% lower height helps prevent contamination and allows easy recovery of sample solutions
- Same diameter as 50mL conical tubes



Code	Description	Pack	Inner Pack	List Price, £	List Price, €
E0030118405	Eppendorf Quality with snap cap	200	5 bags of 40 tubes	48.60	56.00
E0030118413	PCR clean with snap cap	200	5 bags of 40 tubes	52.00	60.00
E0030118421	Sterile with snap cap - pyrogen, DNase, RNase and DNA-free	150	6 bags of 25 tubes	43.20	50.00
E0030122410	Eppendorf Quality with screw cap	200	4 bags of 50 tubes	52.00	60.00
E0030122429	PCR clean with screw cap	200	4 bags of 50 tubes	56.00	65.00
E0030122437	Sterile with screw cap - pyrogen, DNase, RNase and DNA-free	200	8 bags of 25 tubes	59.00	68.00
E0030118502	Starter Pack PCR clean with snap cap - 200 tubes, 4 single tube stands, 6 adapters for rotors with bore for 50mL conical tubes	Each	-	85.00	99.00
E0030122500	Starter Pack PCR clean with screw cap - 200 tubes, 4 single tube stands, 6 adapters for rotors with bore for 50mL conical tubes	Each	-	89.00	103.00

Sartorius Picus Electronic Pipettes

2 YEARS



Small, light and ergonomic design ensures comfort of use and helps avoid RSI. Incorporates an electronic brake and piston control system for accurate and precise pipetting results, whilst an intuitive user interface with an adjustment wheel ensures fast volume setting and easy menu navigation.

- Electronic tip ejection
- Built in plate tracker functionality guides pipetting steps for improved microplate work
- Lightweight, 100g
- Optiload ensures tip loading with a constant and equal force for perfect sealing
- Hot key access for up to 10 saved programmes



25% OFF

Code	Channels	Volume Range, μL	Offer Price, £	Offer Price, €
F12162	Single	0.2 - 10	404.00	469.00
F12164	Single	5 - 120	404.00	469.00
F12166	Single	10 - 300	404.00	469.00
F12168	Single	50 - 1000	404.00	469.00
F12170	Single	100 - 5000	404.00	469.00
F12172	Single	500 - 10,000	404.00	469.00
F12174	8	0.2 - 10	622.00	722.00
F12176	8	5 - 120	622.00	722.00
F12178	8	10 - 300	622.00	722.00
F12180	8	50 - 1200	622.00	722.00
F12182	12	0.2 - 10	746.00	865.00
F12184	12	5 - 120	746.00	865.00
F12186	12	10 - 300	746.00	865.00
F12188	12	50 - 1200	746.00	865.00

Accessories

Code	Description	Offer Price, £	Offer Price, €
F12190	Sartorius Picus 4 position charging carousel with AC-adaptor	292.00	339.00

Thermo Scientific Finnpiquette F1 Variable Volume Pipettes

5
YEARS

Thermo
SCIENTIFIC

Performance and ergonomic comfort make these pipettes a great choice for your lab.

- Lightweight handle design combined with low plunger, tip attachment and ejection forces help reduce the risk of RSI
- Silent and lighter volume adjustment mechanism
- The secure volume setting prevents undesirable volume drift during operation
- The 120° adjustable finger rest – for both right and left handed operator comfort allows the hand to relax during pipetting
- The Finnpiquette F1 Pipette together with compatible Finntip tips is CE marked in accordance with the IVD Directive



Finnpiquette Single Channel Pipettes

Code	Volume Range, μ L	Offer Price, £	Offer Price, €
F12238	1 - 10	185.00	215.00
F12240	2 - 20	185.00	215.00
F12242	5 - 50	185.00	215.00
F12244	10 - 100	185.00	215.00
F12246	20 - 200	185.00	215.00
F12248	30 - 300	185.00	215.00
F12250	100 - 1000	185.00	215.00
F12252	500 - 5000	193.00	224.00
F12254	1000 - 10,000	193.00	224.00

Finnpiquette Multichannel Pipettes

Code	Channels	Volume Range, μ L	Offer Price, £	Offer Price, €
F12256	8	1 - 10	483.00	560.00
F12258	8	5 - 50	483.00	560.00
F12260	8	10 - 100	483.00	560.00
F12262	8	30 - 300	483.00	560.00
F12264	12	1 - 10	546.00	633.00
F12266	12	5 - 50	546.00	633.00
F12268	12	10 - 100	546.00	633.00
F12270	12	30 - 300	546.00	633.00

Gilson Microman E Pipettes L



Fully adjustable, positive-displacement pipette delivering the highest ease-of-use and control. Its capillary pistons are especially useful when pipetting problem liquids, where the design ensures accuracy and precision whilst also offering the strongest barrier against residual sample carryover, aerosol contamination and cross-contamination.

- Patented QuickSnap feature automatically fixes the disposable capillary piston
- Ultimate contamination protection
- Comfortable finger hook
- Large action button
- Volume securing button
- Clearly visible volumeter



**40%
OFF**

Code	Description	Compatible Capillary Piston	Volume Range, µL	Offer Price, £	Offer Price, €
F12010	M10	CP10 / CP10ST	1 - 10	152.00	176.00
F12012	M25	CP25 / CP25ST	3 - 25	152.00	176.00
F12014	M50	CP50 / CP50ST	20 - 50	152.00	176.00
F12016	M100	CP100 / CP100ST	10 - 100	152.00	176.00
F12018	M250	CP250 / CP250ST	50 - 250	152.00	176.00
F12020	M1000	CP1000 / CP1000ST	100 - 1000	152.00	176.00

Thermo Scientific



S1 Pipette Fillers

Thermo Scientific S1 Pipette Fillers

**2
YEARS**

SPECIAL OFFER

**45%
OFF**

Code	Colour	Offer Price, £	Offer Price, €
F12228	White	289.00	335.00
F12230	Clear	289.00	335.00
F12232	Blue	289.00	335.00
F12234	Red	289.00	335.00
F12236	Green	289.00	335.00

Gilson Microman Capillary Pistons



Gilson Capillary Pistons are lightweight and slim so they fit narrow and deep tubes, made of pure polypropylene and contamination free. Also available sterilised ensuring that they are free of DNA, RNA, DNAses, RNAses, ATP, pyrogens and trace metals.

- With the disposable piston located inside the capillary tip, users can be assured that no harmful samples will contaminate the pipette
- Dye-free - no risk of chemical contamination



Code	Description	Volume Range, μ L	Pack	Offer Price, £	Offer Price, €
F12022	CP10	1 - 10	960	157.00	182.00
F12024	CP10	1 - 10	192	39.70	46.10
F12026	CP10ST sterile	1 - 10	960	224.00	260.00
F12028	CP10ST sterile	1 - 10	192	44.90	52.00
F12030	CP25	3 - 25	960	173.00	201.00
F12032	CP25	3 - 25	200	33.20	38.50
F12034	CP25ST sterile	3 - 25	576	134.00	155.00
F12036	CP50	20 - 50	960	173.00	201.00
F12038	CP50	20 - 50	200	33.20	38.50
F12040	CP50ST sterile	20 - 50	576	134.00	155.00
F12042	CP100	10 - 100	960	157.00	182.00
F12044	CP100	10 - 100	192	39.70	46.10
F12046	CP100ST sterile	10 - 100	960	224.00	260.00
F12048	CP100ST sterile	10 - 100	192	44.90	52.00
F12050	CP250	50 - 250	960	173.00	201.00
F12052	CP250	50 - 250	200	33.20	38.50
F12054	CP250ST sterile	50 - 250	576	134.00	155.00
F12056	CP1000	100 - 1000	182	39.70	46.10
F12058	CP1000ST sterile	100 - 1000	182	44.90	52.00

Gilson Pipetman 4 Pipette Kits L



Kits include:

- 4 Pipetman pipettes: P2, P20, P200 and P1000
- 3 racks of certified quality Pipetman Diamond tips: D10L, D200 and D1000
- 4 single pipette holders
- 1 Gilson guide to pipetting



Pipetman L

Pipetman L is a lightweight pipette with a newly designed handle that fits naturally in your hand.



Code	Offer Price, £	Offer Price, €
F12060	534.00	619.00

Pipetman G

Pipetman G incorporates a completely redesigned and lubricated piston system offering one of the lowest pipetting forces on the market.

Code	Offer Price, £	Offer Price, €
F12062	481.00	558.00

Pipetman Classic

Pipetman P Classic pipette is designed and manufactured to provide you with a range of robust, accurate and precise pipettes.

Code	Offer Price, £	Offer Price, €
F12064	455.00	528.00



SLS Select Reagent Reservoirs

Sterile, DNA, RNAse & pyrogen free

Code	Description	Pack	Offer Price, £	Offer Price, €
F12532	25mL individually wrapped	50	20.60	23.90
F12534	50mL individually wrapped	50	15.30	17.70
F12536	100mL inner packs of 5	100	21.00	24.40





SLS Select Serological Pipettes

Manufactured in compliance with the current versions of the ISO 13485 and FDA CFR 21 Part 820, cGMP.

- Made from USP Class VI polystyrene resin
- Crisp, dark ascending and descending as well as negative graduations
- Colour-coded rings for easy identification
- Plugged
- Sterile, non-pyrogenic, RNase-/DNase-free



Code	Volume, mL	Individually Wrapped	Inner Pack	Pack	Offer Price, £	Offer Price, €
F12500	1	Yes	100	1000	57.00	66.00
F12502	1	No	25	1000	47.20	55.00
F12504	2	Yes	100	1000	63.00	73.00
F12506	2	No	25	1000	47.20	55.00
F12508	5	No	25	500	44.80	52.00
F12510	5	Yes	50	200	17.20	20.00
F12512	10	Yes	50	200	18.00	20.90
F12514	10	No	25	500	55.00	64.00
F12516	25	No	20	200	65.00	75.00
F12518	25	Yes	50	200	41.20	47.80
F12520	50	Yes	20	100	50.00	58.00



Corning Stripettor Ultra

Code	Offer Price, £	Offer Price, €
F12068	138.00	160.00

Over
**45%
OFF**

Wheaton CompletePak Kits



Crimp top vials, rubber stoppers and seals which can be customised for any application. Each kit comes with specific USP certificates. The vials are packaged in a sterile polypropylene (PP) tray which is ideal for manual filling. Each kit is designed to fit in a standard fume hood.

- Sterile - 18 month shelf life from date of processing
- Certified USP <788> Particulate Matter in Injections, USP <85> The Bacterial Endotoxins Test and USP <71> The Sterility Test
- Container Closure Integrity (CCI) certification available upon request
- Each kit has equal amounts of components for reduced scrap rates
- Complete manufacturing traceability
- Frees up valuable clean room space



Code	Vials Included	Stoppers Included	Seals Included	List Price, £	List Price, €
VIA1020	210 x 2mL clear sterile vial	230 x 13mm omni flex 3G sterile serum stopper	230 x 13mm sterile blue seal	1282.00	1487.00
VIA1022	210 x 2mL clear sterile vial	230 x 13mm omni flex 3G sterile serum stopper	230 x 13mm sterile red seal	1282.00	1487.00
VIA1024	200 x 5mL clear sterile vial	220 x 20mm omni flex 3G igloo lyo stopper	220 x 20mm sterile blue seal	1375.00	1595.00
VIA1026	200 x 5mL clear sterile vial	220 x 20mm omni flex 3G sterile igloo lyo Stopper	220 x 20mm sterile red seal	1375.00	1595.00
VIA1028	158 x 10mL clear sterile vial	220 x 20mm ultra-pure sterile serum stopper	220 x 20mm sterile blue seal	1288.00	1494.00
VIA1030	158 x 10mL clear sterile vial	220 x 20mm ultra-pure sterile serum stopper	220 x 20mm sterile red seal	1288.00	1494.00
VIA1032	200 x 5mL clear sterile vial	220 x 20mm omni flex 3G sterile serum stopper	220 x 20mm sterile blue seal	1340.00	1554.00
VIA1034	200 x 5mL clear sterile vial	220 x 20mm omni flex 3G sterile serum stopper	220 x 20mm sterile red seal	1340.00	1554.00
VIA1036	158 x 10mL clear sterile vial	220 x 20mm omni flex 3G sterile igloo lyo stopper	220 x 20mm sterile blue seal	1434.00	1663.00
VIA1038	158 x 10mL clear sterile vial	220 x 20mm omni flex 3G sterile igloo lyo stopper	220 x 20mm sterile red seal	1434.00	1663.00
VIA1040	158 x 10mL clear sterile vial	220 x 20mm omni flex 3G sterile serum stopper	220 x 20mm sterile blue seal	1399.00	1623.00
VIA1042	158 x 10mL clear sterile vial	220 x 20mm omni flex 3G sterile serum stopper	220 x 20mm sterile red seal	1399.00	1623.00
VIA1044	210 x 2mL clear sterile vial	230 x 13mm ultra-pure sterile serum stopper	230 x 13mm sterile blue seal	1171.00	1358.00
VIA1046	210 x 2mL clear sterile vial	230 x 13mm ultra-pure sterile serum stopper	230 x 13mm sterile red seal	1171.00	1358.00
VIA1048	210 x 2mL clear sterile vial	230 x 13mm omni flex 3G sterile igloo lyo stopper	230 x 13mm sterile blue seal	1317.00	1528.00
VIA1050	210 x 2mL clear sterile vial	230 x 13mm omni flex 3G sterile igloo lyo stopper	230 x 13mm sterile red seal	1317.00	1528.00
VIA1052	200 x 5mL clear sterile vial	220 x 20mm ultra-pure sterile serum stopper	220 x 20mm sterile blue seal	924.00	1072.00
VIA1054	200 x 5mL clear sterile vial	220 x 20mm ultra-pure sterile serum stopper	220 x 20mm sterile red seal	1229.00	1426.00

SLS Lab Pro A - Series Analytical Balance



The breeze break has rotary sliding doors that slide behind the balance and can be removed with one touch. This feature, combined with the small footprint, make the balances ideal for applications where space is at a premium.

- Automatic internal calibration
- Reverse backlit LCD display for easy to read weighing results
- Statistical calculation function eliminates the need for a stats printer
- Standard RS-232C
- Fast compact SHS sensor, response time ~ 2 seconds

40%
OFF



Code	Capacity, g	Readability, mg	Offer Price, £	Offer Price, €
F12428	102	0.1	582.00	675.00
F12430	252	0.1	615.00	713.00

Sartorius Secura Balances

2
YEARS



- Integrated protection system
- Real-time alarm messaging and interactive user guidance for levelling
- SQmin for automatic detection and active monitoring to ensure use within the acceptable USP operating range
- Fully automatic internal adjustment function - isoCAL
- Cal audit trail for easy, traceable documentation of all calibration and adjustment data
- Safe and clear documentation
- GLP and GMP compliant printouts
- Standard password security features for protection against tampering and unauthorised access
- Integrated PC direct function and Plug & Work connectivity to a Sartorius printer



Up to
25%
OFF

Code	Balance Type	Capacity, g	Readability, mg	Offer Price, £	Offer Price, €
F12204	Analytical	120	0.1	2752.00	3192.00
F12206	Analytical	220	0.1	3056.00	3545.00
F12208	Analytical	320	0.1	3696.00	4287.00
F12210	Semi-micro	120	0.01	4329.00	5022.00
F12212	Semi-micro	120/220	0.01/0.1	4572.00	5304.00
F12214	Micro	21	0.002	12471.00	14466.00



REUSABLE PLASTIC LABWARE

Introducing the new

Azlon® Round Integral Wash Bottle

- Designed for increased protection against contamination
- Unique vented cap with a PTFE membrane to eliminate hazardous solvent drips
- Available plain or pre-printed with chemical names and information compliant with European safety legislation

Solutions to suit your liquid handling needs

New to the
Azlon® Wash Bottle
range...



SciLabware



OHAUS Scout® Precision Balances

2 YEARS



New design features including a graphic LCD touchscreen. The range gives exceptional weighing results and the choice of either mains or battery operation.

- Applications: weighing (7 units), counting, percent, display hold, totalisation, check weighing, specific gravity/density, dynamic
- Display: 4.3" (109mm) full-colour VGA graphic touchscreen display with user-controlled brightness
- Operation: AC adapter (included) or 4 AA batteries (not included)
- Construction: ABS plastic housing with stainless steel pan

Save 30% OFF the entire Ohaus range! See the SLS website for more fantastic Ohaus offers!



Code	Model	Capacity, g	Readability, g	Pan Size, mm	Offer Price, £	Offer Price, €
BAL0041	STX123	120	0.001	93.2	347.00	403.00
BAL0042	STX223	220	0.001	93.2	389.00	451.00
BAL0043	STX222	220	0.01	120	249.00	289.00
BAL0044	STX422	420	0.01	120	284.00	329.00
BAL0045	STX622	620	0.01	120	312.00	362.00
BAL0046	STX1202	1000	0.01	170 x 140	349.00	405.00
BAL0047	STX2202	2000	0.01	170 x 140	389.00	451.00
BAL0048	STX421	400	0.1	120	151.00	175.00
BAL0049	STX621	600	0.1	170 x 140	172.00	200.00
BAL0050	STX2201	2200	0.1	170 x 140	249.00	289.00
BAL0051	STX6201	6200	0.1	170 x 140	329.00	382.00
BAL0052	STX8200	8200	1	170 x 140	235.00	273.00



SLS Select White Weighing Boats

Supplied in packs of 1000

Code	Description	Offer Price, £	Offer Price, €
F12538	7mL	10.90	12.60
F12540	100mL	22.60	26.20
F12542	250mL	38.20	44.30

SPECIAL PRICE

OHAUS Scout® Portable Balances

2
YEARS



The updated Scout® portable balances give the same exceptional accuracy and reliability of earlier Scouts along with several new improvements. Easy to use with a 4-button keypad and intuitive, visual menu prompts.

- Application: weighing (7 units), counting, percent, display hold, totalisation, check weigh, specific gravity/density, dynamic
- Display: LCD screen with white LED backlight
- Operation: mains or battery
- Construction: ABS plastic housing with stainless steel pan



**30%
OFF**
Entire Range

Code	Model	Capacity, g	Readability, g	Pan Size, mm	Offer Price, £	Offer Price, €
BAL0030	SKX123	120	0.001	93.2	244.00	283.00
BAL0031	SKX222	220	0.01	120	160.00	186.00
BAL0032	SKX422	420	0.01	120	196.00	227.00
BAL0033	SKX622	620	0.01	120	217.00	252.00
BAL0034	SKX1202	1000	0.01	170 x 140	249.00	289.00
BAL0035	SKX2202	2000	0.01	170 x 140	291.00	338.00
BAL0036	SKX421	400	0.1	120	112.00	130.00
BAL0037	SKX621	600	0.1	170 x 140	130.00	151.00
BAL0038	SKX2201	2200	0.1	170 x 140	172.00	200.00
BAL0039	SKX6201	6200	0.1	170 x 140	221.00	256.00
BAL0040	SKX8200	8200	1	170 x 140	172.00	200.00



Integra Flameboy

Code	Description	Offer Price, £	Offer Price, €
F12340	Flameboy with gas tube nipple	291.00	338.00
F12342	Flameboy with gas cartridge adapter	339.00	393.00

**30%
OFF**

Ohaus FC5706 Centrifuge Multi

2 YEARS



A small benchtop multi-function centrifuge ideal for a multitude of spin-down applications. Characterised by reliability, various safety features, the ability to accommodate test tubes of various sizes and intuitive operation.

- A large LCD display and the capabilities to set and view both speed in RPM and g-force
- Can accommodate all standard tube sizes from 1.5mL to 50mL and can hold six 50mL tubes and twelve 15mL tubes during one process
- Sturdy mechanical lid with locking system and a rotor imbalance sensor that stops the centrifuge, protecting the operator from being injured by the high-speed spinning rotors

30% OFF
Entire Range



Code	Speed Range, RPM	Max RCF, x g	Temperature Range, °C	Dims, w x d x h, mm	Offer Price, £	Offer Price, €
CEN2628	200 – 6000	4427	2 - 35	291 x 392 x 266	735.00	853.00

Ohaus FC5513 Microcentrifuge



A high-speed benchtop microlitre centrifuge capable of generating $17,317 \times g$ with four optional rotors, designed for a range of essential lab applications. Engineered with convenient operation in mind, the FC5513 features a uniquely designed splash-proof front panel with touch-wheel control on an intuitive interface.

- Modern touch-wheel control on a sleek splash-proof interface
- The compact design saves valuable benchtop space - enclosing all its functionalities within a small footprint
- Speed range 200 – 13,500RPM
- See SLS website for more rotor options

30% OFF
Entire Range



Code	Description	Offer Price, £	Offer Price, €
CEN2066	FC5513 Centrifuge Micro without rotor	875.00	1015.00
CEN2068	FC5513 Centrifuge Micro with 24 x 1.5/2mL fixed angle rotor	945.00	1096.00

Axyspin Refrigerated Microcentrifuge

Powerful yet silent brushless drive technology. Starting from room temperature, the chamber cools to 4°C in just 8 minutes. The control panel features a back-lit LCD, while the large control knob facilitates digital setting of rotor speed, run time and temperature.

- Speed range 500 to 13,500RPM
- Maximum RCF 17,135 x g
- Maximum capacity 24 x 1.5/2.0mL
- Temperature range -10 to 40°C
- 24 x 1.5/2.0 mL aluminum rotor included



Code	Offer Price, £	Offer Price, €
F12070	1975.00	2291.00

SLS Flowgen Plate Spinner Centrifuge



Rapidly spins down droplets in PCR or microplates to improve PCR yields or give more consistent assay results. The swing out rotor has two plate carriers that rest at a 75° angle, allowing plates to be inserted confidently without sealing tapes or caps.

- Most samples can be spun down in less than 20 seconds
- Unique swing-out rotor design prevents spillage
- Speed: 2,550RPM/600 x g
- Capacity: 2 x PCR plates (when stacking skirted PCR plates, max. capacity is 4 plates); 2 x microplates
- Dims, w x d x h, mm: 230 x 260 x 197



Code	Offer Price, £	Offer Price, €
F12226	417.00	484.00



Corning Mini Microcentrifuge

Fixed speed of 6,000RPM (2,000 x g).
8 x 1.5/2.0mL rotor and 4-place strip tube rotors included.

Code	Offer Price, £	Offer Price, €
F12066	137.00	159.00



Thermo Scientific Solaris Open Air Orbital Shakers

10
YEARS

Thermo
SCIENTIFIC

Ruggedly built for demanding use, combining a new ergonomic design with key feature enhancements that help save time, protect your process and drive your science forward. Easily supports heavy loads. Maintenance-free and the shaker mechanism comes with a 10-year warranty.

A variety of easy-to-remove platforms plus associated flask clamps and tube racks to support virtually any capacity are available. Can be operated in microbiological incubators, environmental chambers or refrigerators to meet a wide range of application requirements.



- Compact footprint designed to fit on the bench-top
- Connectivity for easy monitoring
- Units operate in a temperature range of 0°C to 40°C and humidity conditions from 20 to 80% non-condensing
- Unbalanced load sensor with alarms
- Data logging of alerts, alarms and interactions
- Soft-start feature eliminates sudden starts and stops, splashing of vessel contents or wetting of flask closure



Code	Description	Speed Range, RPM	Orbit Ø, cm	Max Load, kg	Overall Dims (l x w x h, without platform), mm	List Price, £	List Price, €
SHA1182	Small shaker 12 x 14 inch universal platform	15 to 525	2.54	25	469 x 364 x 141	3404.00	3949.00
SHA1184	Large shaker 18 x 30 inch universal platform	15 to 525	2.54	43	648 x 573 x 177	6708.00	7781.00

Introducing, someone you already know.

Meet Epredia. While you may not yet know the name ... you likely recognize **our legacy.**

Epredia™ is the culmination of nearly a century of a singular focus on advancing technologies and products that enhance precision cancer diagnostics.

We are powered by many of the most-respected names in the industry – Shandon™, Richard-Allan Scientific™, Microm™, Menzel-Gläzer™, and others. Together, these brands represent groundbreaking technologies, a remarkable commitment to quality, and a deep dedication to enabling our customers to achieve diagnostic excellence.

Discover our full portfolio, from specimen collection to processing, sectioning to staining, advanced imaging to archiving, we have solutions that help laboratories work more precisely, efficiently, and accurately.

We look forward to meeting you. Again.



epredia
Enhancing precision
cancer diagnostics

VelociRuptor V2 Microtube Homogeniser

1
YEAR



Lyses, grinds and homogenises a broad variety of biological samples. The stainless steel tube carrier subjects up to 24 samples to an optimised, high speed, 3D motion, producing high energy impacts between the samples and micro-beads to release cellular contents. To protect fragile, heat sensitive samples, the unit can be programmed to operate in shortened consecutive cycles with a rest period in between.

- Eliminates the cross-contamination associated with hand-held homogenisers
- Faster and more effective than tissue grinders
- Optional 12 x 5mL tube rotor for larger sample volumes (fits V2 version only)



Code	Description	Offer Price, £	Offer Price, €
F12548	VelociRuptor V2 microtube homogeniser	3745.00	4344.00
F12550	12 x 5mL tube rotor for VelociRuptor V2	163.00	189.00

Accessories

Code	Description	Pack	List Price, £	List Price, €
F12552	Prefilled 2.0mL tubes silica (glass) beads 0.1mm acid washed	50	92.10	107.00
F12554	Prefilled 2.0mL tubes silica (glass) beads 0.5mm acid washed	50	92.10	107.00
F12556	Prefilled 2.0mL tubes silica (glass) beads 1.0mm acid washed	50	92.10	107.00
F12558	Prefilled 2.0mL tubes zirconium beads 0.1mm triple-pure - high impact	50	128.76	149.00
F12560	Prefilled 2.0mL tubes zirconium beads 0.5mm triple-pure - high impact	50	128.76	149.00
F12562	Prefilled 2.0mL tubes zirconium beads 1.0mm triple-pure - high impact	50	128.76	149.00
F12564	Prefilled 2.0mL tubes zirconium beads 1.5mm triple-pure - high impact	50	128.76	149.00
F12566	Prefilled 2.0mL tubes zirconium beads 3.0mm triple-pure - high impact	50	128.76	149.00
F12568	Triple-pure (zirconium) starter kit 10 each of 0.1, 0.5, 1.0, 1.5 and 3.0mm	50	128.76	149.00
F12570	Prefilled 2.0mL tubes stainless steel 2.8mm acid washed	50	128.76	149.00
F12572	2.0mL conical bottom sterile PCR clean screw cap micro centrifuge tube	500	115.00	133.00
F12574	Tubes (empty) with caps and sealing ring	1000	137.00	159.00
F12576	Tubes (empty) with caps and sealing ring	50	34.70	40.30
F12578	Prefilled 5.0mL tubes stainless steel beads 2.8mm acid washed	50	174.00	202.00

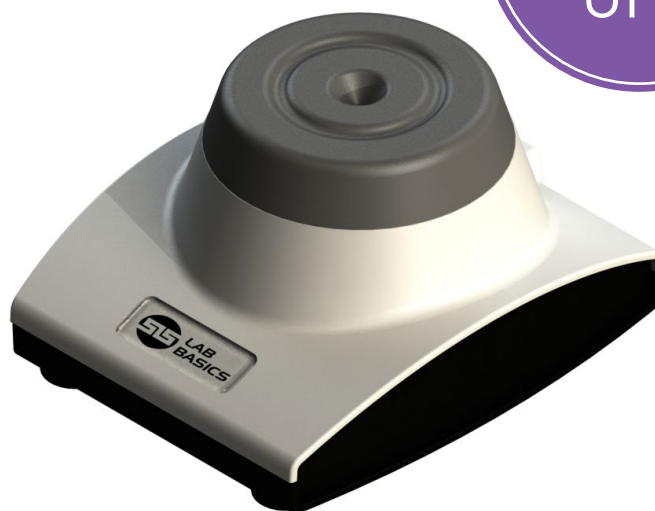
SLS Lab Basics Mini Vortex Mixer

3
YEARS



Offers immediate vortex mixing for a variety of tube sizes. A simple, touch start operation enables exceptional mixing performance with one handed operation and shaking stops when the tube is lifted.

- Low profile design and small footprint (only 4.3 inches wide)
- Non-slip feet ensure the unit stays in place while mixing
- Made from durable ABS and silicone materials to resist most commonly used chemicals
- Quiet operation and low vibration
- Can be used with tubes ranging from 2mL to 50mL



40%
OFF

Code	Speed, RPM	Orbit, mm	Weight, kg	Offer Price, £	Offer Price, €
F12218	4500	6	0.9	77.00	89.00

SLS Lab Basics Mini Magnetic Stirrer

3
YEARS



The low-profile design is lightweight for transporting with ease and the small footprint saves valuable space on a bench top. Offers quiet operation with low vibration, ideal for routine stirring applications. Includes: 2 stir bars 9mm x 35mm, universal power adapter.

40%
OFF



Code	Speed Range, RPM	Capacity, L	Noise level, dB	Weight, kg	Offer Price, £	Offer Price, €
F12220	200 - 2200	3	53	0.447	76.00	88.00

Stuart Hotplate Stirrers



Ideal for day-to-day use and offer precise temperature control and stirring speed of samples. Stirring speeds of up to 1400RPM and the ability to mix up to 15L. The front control panel resists spills and the glass is chemically toughened for extra resilience. When plate temperature rises above 50°C, a hot warning light flashes even if the unit is turned off or unplugged. All units feature a fixing point for a retort rod and are BioCote antimicrobial protected. See the SLS website for more colour options!



Code	Description	List Price, £	List Price, €
STI2046K	Analogue aluminium plate, black	400.00	464.00
STI2048K	Analogue ceramic plate, black	430.00	499.00
STI2068K	Digital aluminium plate, black	410.00	476.00
STI2072K	Digital ceramic plate, black	440.00	510.00
STI2076K	Premium aluminium plate, black	710.00	824.00
STI2078K	Premium ceramic plate, black	760.00	882.00

SLS Lab Basics LED Trinocular Inverted Microscope



A robust tissue culture microscope with integrated phase contrast. The phase slider is fitted with centrable phase rings plus an open position for brightfield viewing. It features a pair of 10 x super wide-field (FN22) eyepieces, a quintuple position nosepiece, ergonomic coaxial coarse and fine focus and a bright white, adjustable intensity, 3W LED light.

- Objectives: 10 x plan achromatic, brightfield LWD and 10x, 20x, 40x phase contrast plan achromatic LWD
- Optical head with photo port, inclined at 45°
- Interpupillary distance adjustment (siedentopf type): 48 to 75mm
- The Digi-pad camera and tablet has high-definition 9.7 inch colour LCD screen and is equipped with software that allows the user to preview an image, set the white balance, capture images and videos as well as having measurement and annotation capabilities



Code	Description	Offer Price, £	Offer Price, €
F12344	SLS Lab Basics LED trinocular inverted microscope	1992.00	2311.00
F12346	Microscope mount adapter 38mm	102.00	118.00
F12348	Digi-pad 5mpx camera and tablet	630.00	731.00



Up to
**50%
OFF**

SLS Select Coverslips

Supplied in packs of 200

Code	Description	Offer Price, £	Offer Price, €
F12544	No 1 22 x 22mm	3.86	4.48
F12546	No 1.5 22 x 22mm	4.80	5.57

Motic Panthera L Microscopes

It stands out for its unseen combination of built-in digital capabilities. Its smart CAM digital head and the imaging on device system simplifies daily work, allowing the user to work directly from the microscope to a HDMI screen with the help of a mouse, or work with a tablet and the Panthera App. Panthera L has a list of premium features which include a rackless mechanical stage, interchangeable LED/halogen illumination sources, and a wide variety of available contrast techniques.

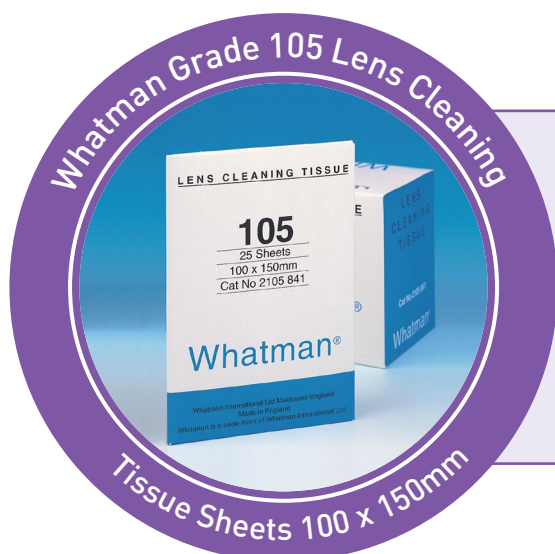


Motic®

**30%
OFF**

- 4X, 10X, 40X and 100X objectives included

Code	Description	Camera	Imaging on Device System	HDMI Display Mode	Offer Price, £	Offer Price, €
F12100	Panthera L	Digital Smart Cam	Yes	Yes	2068.00	2399.00
F12102	Panthera DL	Digital Camera	No	No	1626.00	1886.00



Whatman Grade 105 Lens Cleaning Tissue Sheets

Supplied in packs of 625

Code	Offer Price, £	Offer Price, €
F12106	78.00	90.00

**30%
OFF**

Seward Stomacher 400 EVO



seward
World leaders in sample preparation

The world's leading laboratory blender for food microbiologists has EVOLved.

- Unique one-touch bag loading system
- Quiet and efficient blending
- Easy clean interior with removable paddles, drip tray and access to paddle chamber
- Designed for use with both standard and new Stomacher 400 ECO bags
- Save up to 25% on annual consumable costs with Seward ECO bags compared to cost of Seward standard bags
- Offer bundle includes: 400 EVO Stomacher, 400 ECO Path. Bags (pk 500), 400 ECO TVC Bags (pk 500), Bag Opener

30% OFF
with FREE
ECO Bags and
Bag Opener



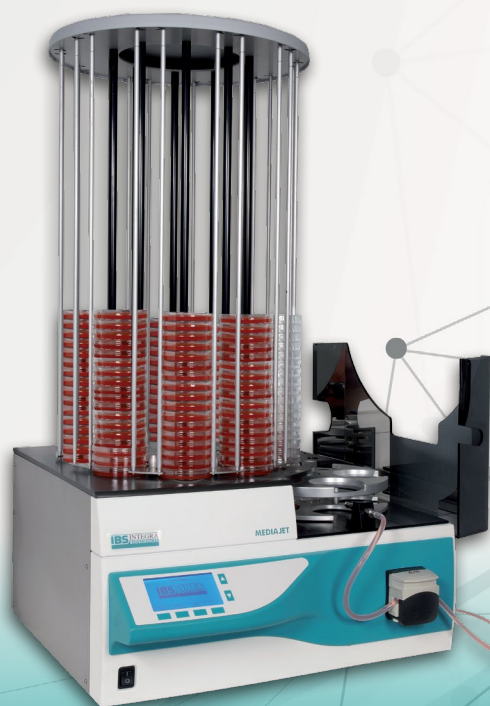
Code	Offer Price, £	Offer Price, €
F12312	2245.00	2604.00

Buy any Integra Mediaclave or Mediajet and get **FREE** installation worth £575

INTEGRA



Quote reference
FINSTALL
when placing
your order



Synbiosis ProtoCOL3 Colony Counter with PC

3 YEARS

SYNBIOSIS
A DIVISION OF THE SYNOPSIS GROUP

Next generation instrument for colony counting, zone measurements, inhibition and antibiotic susceptibility testing (AST), membranes, Petrifilm™ and a range of other applications including: spiral plates, OPKA (opsonophagocytic killing assay), SBA (serum bactericidal assay), Multi-sector, Multi-well, SRD (single radial immunodiffusion) and Ames. The new design now enables plates of up to 150mm diameter to be automatically read at the press of a button. Designed for use across a wide range of applications, ProtoCOL 3 will count colonies as small as 43µm or measure zones accurately to 0.5mm.

20% OFF
plus **FREE**
Software Module
worth £452



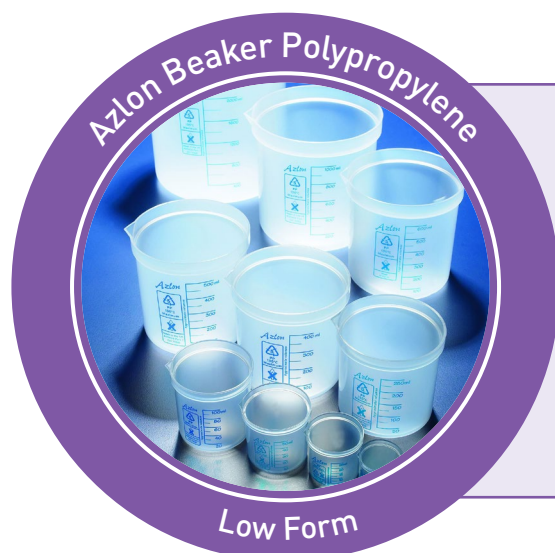
- Unique LED lighting system
- 1.4MP scientific grade CCD camera
- Mounted touchscreen PC

Code	Offer Price, £	Offer Price, €
F12456	9302.00	10790.00

Software Modules

Choose one of the below software modules for free when you buy a ProtoCOL3 Colony Counter.

Code	Description
F12458	Amies software module for bacterial reverse mutation
F12460	Counting software module for spiral plates
F12462	Multiwell module for multiwell plates
F12464	SBA software module for serum bactericidal assay
F12466	OPKA software module for opsonophagocytic killing assay
F12468	Multisector plates software module



Azlon Beaker Polypropylene Low Form

SPECIAL OFFER
30% OFF

Code	Capacity, mL	Pack	Offer Price, £	Offer Price, €
F12122	250	10	18.96	21.99
F12120	1000	5	17.77	20.60
F12118	2000	1	6.27	7.27

Lonza FlashGel™ System

Lonza

The FlashGel™ System is the fastest way to separate DNA and the only way to watch DNA migration as it happens. Separates DNA in 2 - 7 minutes. Monitor gel runs right at the bench, without UV light. The highly sensitive system allows a 5 -20X reduction in DNA levels. The FlashGel™ System consists of enclosed, disposable, precast agarose gel cassettes and a combination electrophoresis and transilluminator unit. Provides both separation and detection of both DNA and RNA.

Lonza FlashGel™ System contains:

- FlashGel Dock
- FlashGel Camera
- Pack of 1.2% DNA Cassettes
- Loading dye & marker

Code	Offer Price, £	Offer Price, €
F12082	1227.00	1423.00



Accessories

Code	Description	Offer Price, £	Offer Price, €
F12084	DNA cassette 1.2% agarose 12 + 1 well single-tier 9 pack	100.00	116.00
F12086	DNA cassettes 1.2% 2 x 16 + 1 wells 9 pack	100.00	116.00
F12088	DNA cassettes 2.2% 12 + 1 wells 9 pack	100.00	116.00
F12090	DNA cassette 2.2% agarose 16 + 1 well double-tier (34-well) 9 pk	100.00	116.00
F12092	Recovery cassettes 1.2% agarose 8 + 1 double-tier (18-well) 9 pk	100.00	116.00
F12094	Recovery cassettes 2.2% agarose 8 + 1 double-tier (18-well) 9 pk	100.00	116.00
F12096	RNA cassette 1.2% agarose 12 + 1 single-tier 9 pk	100.00	116.00
F12098	RNA cassette 1.2% agarose 16 + 1 double-tier (34-well) 9 pk	100.00	116.00



Integra DOSE IT Peristaltic Pump

0.1 - 9999mL dose volume.

0.6mL/min - 5L/min flow rate.

1
YEAR

Code	Offer Price, £	Offer Price, €
F12338	2262.00	2624.00

**25%
OFF**

NuGenius Gel Documentation System

3 YEARS



Low cost, integrated system for DNA and protein analysis and gel documentation.

Special offer package includes: NuGenius gel doc system and transilluminator (20 x 24cm, 302nm).

- 5 million pixel resolution camera
- Motor driven zoom lens (8 - 48mm f/1.2)
- Integrated 7 inch touch screen
- Built in processor running NuGenius software for image capture and editing
- Dims, w x d x h, mm: 310 x 450 x 750

15% OFF
plus **FREE**
Transilluminator
Worth £866



Code	Offer Price, £	Offer Price, €
F12078	4522.00	5246.00

GREAT PRICES on Molecular Biology Reagents

15% OFF List Price
Plus **FREE** Delivery on all
Bioline Products

Includes:

PCR Kits and Reagents
Electrophoresis Ladders and Markers
Nucleic Acid Purification
All Bioline branded products

Offer ends 31st Dec 2019

Visit the website for more details: www.analab.co.uk

bioline
meridian BIOSCIENCE

**Best Brand
for PCR**

PCRmax Alpha Cyclers



Available in 1 block or 2 block chassis, the Alpha Cycler interface is Android based, with a large 7" HD touchscreen for responsive control of the software.

Ideal for multi user environments, users can make any USB device their own login key allowing them to use multiple systems in different locations like a personal unit. Programs can be easily stored, transferred, protected and locked while running.



- Alpha cycler 2 – dual blocks are fully independent and can run different protocols
- Alpha track - remote monitoring can be set to check system performance
- Active sample cooling for sharper amplification and minimal non-specific amplification
- Program wizard - generate a protocol specific to your sequence, template source and amplicon length
- Gradient - allowing for simplified temperature optimisation (1 to 29°C)



Code	Description	Offer Price, £	Offer Price, €
F12108	1 chassis with a single 96 well block	2671.00	3098.00
F12110	1 chassis with a single 384 well block	2671.00	3098.00
F12112	2 chassis with two 96 well blocks	4530.00	5255.00
F12114	2 chassis with two 384 well blocks	4663.00	5409.00
F12116	2 chassis with one 96 and one 384 well blocks	4663.00	5409.00



Whatman Benchkote Surface Protector Sheets

Supplied in packs of 50

Code	Offer Price, £	Offer Price, €
F12104	59.00	68.00



Tecan Infinite F50 Absorbance Plate Reader

2 YEARS

TECAN.

Ideal for photometric measurements of ELISAs and kinetic assays in the 400 to 750nm wavelength range. The systems' innovative design combines eight measurement channels with long-life LED lamps for fast parallel reading and minimal maintenance costs.

- Ideal for absorbance-based ELISAs, kinetic and multi-label reading
- Ready for qualitative and quantitative data analysis
- Magellan's example files and tutorials enable the user to get started easily
- 405nm, 450nm, 492nm and 620nm filters included
- Eight-channel optics for fast reading
- Reference channel for optimised light intensity
- Long-life LED lamps offer longer maintenance-free operation
- Linear plate shaking

20% OFF



Code	Description	Offer Price, £	Offer Price, €
F12298	Infinite F50, including 405nm, 450nm, 492nm & 620nm filters and magellan software	3614.00	4192.00

Tecan Sunrise Absorbance Plate Readers

3 YEARS

TECAN.

With Magellan universal reader control and data analysis software add-on, this is an ideal solution for a range of applications, such as ELISAs, enzyme kinetics, cell viability studies, veterinary assays and many more. It supports a broad wavelength range – from 340 to 750nm – and can measure an entire 96-well plate in less than six seconds, ensuring it is ready to meet the needs of routine diagnostic and research labs.

- Ideal for colorimetric ELISAs, kinetic assays and agglutination readings
- Temperature control option for enzyme kinetics
- Tuneable wavelength option for greater flexibility and wavelength scanning



25% OFF

Visit the SLS website for more specifications

Code	Description	Offer Price, £	Offer Price, €
F12300	Sunrise with 4 filter slide, 405nm, 450nm, 492nm & 620nm filters and magellan software	4276.00	4960.00
F12302	Sunrise with 6 filter slide, 405nm, 450nm, 492nm, 540nm, 570nm & 620nm filters and magellan software	4916.00	5703.00
F12304	Sunrise with gradient filter slide, (400nm - 700nm range) and magellan software	5790.00	6716.00
F12306	Sunrise with 4 filter slide, 405nm, 450nm, 492nm & 620nm filters, temperature control (42°C) and magellan software	5143.00	5966.00
F12308	Sunrise with 6 filter slide, 405nm, 450nm, 492nm, 540nm, 570nm & 620nm filters, temperature control (42°C) and magellan software	5768.00	6691.00
F12310	Sunrise with gradient filter slide, (400nm - 700nm range), temperature control (42°C) and magellan software	6686.00	7756.00

BioDrop UV Vis Spectrophotometers



Delivering rapid, simple and accurate measurement of DNA, RNA, oligo and protein concentration and purity from just 0.5µL of sample. BioDrop's unique technology has no moving parts which ensures excellent accuracy and reproducibility as well as avoiding the need for calibration.

- Light source: pulsed Xenon lamp with a 3 year warranty
- Wavelength range, nm: 190 - 1100
- Absorbance range: 0.3A - 2.5A
- Dimensions, w x d x h, mm: 280 x 410 x 190

25%
OFF



BioDrop µLite+

The choice for life scientists for whom speed and accuracy in micro-volume measurements is required.

- In-built sample port allows a quick check of many samples
- Ideal for performing DNA, RNA, oligo and protein quantification and purity measurements
- A great choice for busy labs that need a quick concentration check

Code	Description	Offer Price, £	Offer Price, €
F12452	BioDrop µLite+ with 0.5mm micro-volume port and built-in printer	4868.00	5647.00

BioDrop Duo+

The ideal solution for those where flexibility of measurement is key.

- In-built sample port for micro-volume measurement
- Ideal for many quick measurements of DNA, RNA or protein across a broad concentration range
- Cuvette holder offers flexibility to measure highly concentrated samples
- Well suited for those performing assays where a broad range of concentrations need to be measured

25%
OFF

Code	Description	Offer Price, £	Offer Price, €
F12454	BioDrop Duo+ with 10mm cell holder and 0.5mm micro-volume port	5678.00	6586.00

Jenway 74 Series Spectrophotometers

3 YEARS

Jenway®

For simple photometric concentration. Calculated using a single standard or a factor, quantitation with the ability to create a calibration curve using up to 20 standards, full spectrum scanning, multi-wavelength - up to 4 wavelengths can be measured simultaneously, and kinetics to monitor the change in absorbance over time.

- CPLive technology: safely transfer and store data, protocols, and results to the Cloud
- 7 inch HD colour touchscreen display
- Multiple USB ports for data storage and printer connectivity
- Android operating system, compatible with both Android and IOS devices
- 10GB on board storage
- Spectral bandwidth: 5.0nm

25% OFF



Code	Description	Wavelength Range, nm	Wavelength Accuracy, nm	Absorbance, A	Offer Price, £	Offer Price, €
F12138	7410 visible scanning	320 to 1000	+/-2.0	-0.3 to 2.5	2106.00	2443.00
F12140	7415 UV/visible scanning	198 to 1000	+/-2.0	-0.3 to 2.5	2808.00	3257.00
F12142	7415 Nano UV/visible scanning	198 to 1000	+/-2.0	15 to 125	3974.00	4610.00

Jenway 76 UV/visible Scanning Spectrophotometer

3 YEARS

Jenway®

Split beam optics provides better accuracy and reproducibility. Programmed measurement modes include photometric for single wavelength measurement, concentration using a standard or factor, spectrum for a high purity scan across the entire wavelength range, quantitation with the ability to create a calibration curve using up to 20 standards, kinetics to monitor change over time, as well as multi-wavelength mode.

- CPLive technology: safely transfer and store data, protocols, and results to the Cloud
- 7 inch high-definition colour touchscreen and interface
- Multiple USB ports for data storage and printer connectivity
- 10GB of internal memory
- Spectral bandwidth: 1.5nm

25% OFF



Code	Wavelength Range, nm	Wavelength Accuracy, nm	Absorbance, A	Offer Price, £	Offer Price, €
F12144	198 to 1000	+/-2.0	-0.3 to 2.5	3713.00	4307.00

Sartorius Arium Mini Plus Ultrapure Water System



sartorius

An ultrapure water system for daily requirements of up to 10L of purified water supplied at a flow rate of 1L/min. A 5L bag optimally stores pre-treated pure water for production of Type I ultrapure water.

- Avoid tank cleaning due to unique bagtank technology
- Can be operated even with gloves via a multi-coloured touch display
- With a footprint of only 28cm in width, it fits into any laboratory environment
- Integrated UV lamp (185/254nm) ensures reliable production of ultrapure water that is virtually free of organic components



Offer Package Includes:

Arium Mini Plus with UV lamp, pre-treatment cartridge, scientific pack for highest ultrapure water quality (ASTM Type 1), 5L bag, biofilter, delivery and installation - requires direct connection to the drinking water supply.

Code

Offer Price, £

Offer Price, €

F12192

3823.00

4435.00



Bioscience Solutions

Lonza

FlashGel™ System

DNA Electrophoresis and Recovery in Minutes

The FlashGel™ System, gives you great resolution and fast results. Simply load samples, watch bands migrate and get data in as little as 5 minutes. Say goodbye to gel preparation, band excision, purification, and UV light. Complete separation, recovery and documentation safely, at the bench in minutes.

Experience the Speed of the FlashGel™ System

- 5 minute separation and recovery
- Excellent band resolution
- Precast, prestained agarose gels and buffer, no need for gel preparation, buffer addition or gel staining

Visit the website for more details:

www.analab.co.uk

SLS Lab Pro Dual Type 1 and 2 Water Purification Systems



Combines ultrapure and DI water in one unit saving money and space. If installation is required please contact our customer service department.

- Novel recirculation loop to save water usage and separate consumables to extend life and reduce running costs
- Variable speed motor saves energy when not in use - reducing running cost and noise
- Dispenses ultrapure water up to 2L/minute
- Type 2 deionised water dispensed at up to 10L/hour
- Small footprint w x d x h, mm, 490 x 290 x 670
- Main unit wall, bench or reservoir mounted
- Ultra-filtered versions nuclease free and endotoxin <0.001EU/mL



Code	Description	Offer Price, £	Offer Price, €
F12522	Dual type 1 and 2 system with dispense gun	4471.00	5186.00
F12524	Dual type 1 and 2 system with remote dispenser	4793.00	5560.00
F12526	30L storage reservoir	411.00	477.00
F12528	60L storage reservoir	502.00	582.00

KNF SIMDOS Liquid Dosing Pumps



Offering ease of use for precise metering and continuous transfer of virtually any liquid used in the laboratory. Two flow rates are available, 1 to 100mL/min (Simdos 10) or 100µL to 20mL/min (Simdos 02) and dosing volumes of 0 to 1000mL or 100µL to 999mL respectively.

- Simple and intuitive operation with easy calibration
- Cycle mode
- Adaptable to fluid characteristics
- Self-priming - can run dry
- Analog and impulse control (RC)
- Splash proof to IP65



Code	Max. Flow Rate, mL/min	Control Version	Head Material	Offer Price, £	Offer Price, €
F12146	20	Standard	Polypropylene	901.00	1045.00
F12148	20	Remote control	Polypropylene	1015.00	1177.00
F12150	20	Standard	PTFE	1658.00	1923.00
F12152	20	Remote control	PTFE	1772.00	2056.00
F12154	100	Standard	Polypropylene	901.00	1045.00
F12156	100	Remote control	Polypropylene	1015.00	1177.00
F12158	100	Standard	PTFE	1658.00	1923.00
F12160	100	Remote control	PTFE	1772.00	2056.00

Lancer ULTIMA 1300LX Freestanding Labware Washer Dryer



LANCER

The 1300 LX provides washing and drying on 3 levels with 4 possible rack positions allowing for flexible loading configurations in a compact footprint.

- Large capacity and volume with three levels
- Powerful and rapid HEPA filtered drying through injectors and in chamber
- Increased safety with on-board storage and input of chemicals
- High grade 316L stainless steel chamber
- Exterior dims, w x d x h, mm: 609 x 752 x 1643
- Interior dims, w x d x h, mm: 535 x 520 x 644
- Eco-friendly low energy, chemicals and water usage

Includes: delivery, installation, commissioning, detergent pack and 1st year service contract.
Free PST basic basket and 36IXLC injector basket.



Two **FREE**
Baskets
Worth £1580

Code	Model	Offer Price (including racks), £	Offer Price, €
F12426	1300LX	13350.00	15486.00

Lancer Detergent and Rinse Aid

LANCER

Code	Description	List Price, £	List Price, €
F12436	Lancer clean detergent - 10L	62.00	72.00
F12440	Lancer rinse aid - 10L	40.10	46.50

Place an order
for one and we'll
send another for

FREE

Up to
39%
OFF

SLS Lab Basics Mini Vacuum Pumps



Special Offer

SLS Lab Basics Mini Vacuum Pumps



Code	Diaphragm Material	Delivery, L/min	Ultimate Vacuum, mbar. Abs	Offer Price, £	Offer Price, €
F12334	EPDM rubber	6	100	195.00	226.00
F12336	PTFE coated	5.5	160	215.00	249.00

Liebherr Mediline Refrigerators and Freezers

LIEBHERR
Quality, Design and Innovation

Large capacity and purpose built for the laboratory where constant use in demanding working conditions often occurs. The advanced electronic controller comes with a variety of visual and audible fault warning alarms and can store three alarm events. Temperature is accurate to 0.1°C and shown in real time.

- Automatic defrost
- Digital temperature display
- Integrated data memory
- RS 485 volt free contact interface
- Door lock and self-closing door
- Environmentally friendly refrigerant used

**25%
OFF**

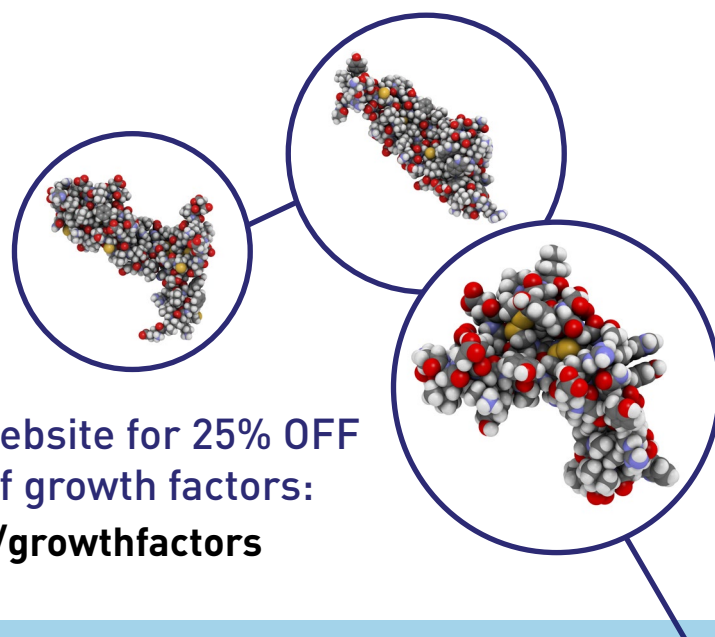


Code	Description	Temperature Range, °C	Capacity, L	Dims, w x d x h, mm	Max No. Shelves / Drawers	Offer Price, £	Offer Price, €
F12072	LGv5010 freezer	-9 to -35	478	747 x 750 x 1844	5 / 10	1949.00	2261.00
F12074	LKv5710 refrigerator	+3 to +16	583	747 x 750 x 1844	5 / -	1499.00	1739.00
F12076	LCv4010 fridge freezer	+3 to +16 / -9 to -30	361	597 x 615 x 2003	5 & 3	1462.00	1696.00

25% OFF Sigma-Aldrich Growth Factors

From purified recombinant growth factors for serum free cell culture to tissue extracts and growth supplements, Sigma-Aldrich delivers the products you need and the support you demand.

**25%
OFF**



Visit the Analab website for 25% OFF
a wide selection of growth factors:
www.analab.co.uk/growthfactors

WTW Inolab® Multi 9310 IDS Multiparameter Benchtop Meter

3
YEARS



Suitable for digital measurements of pH, ORP, dissolved oxygen (optical), BOD, conductivity and turbidity in the lab. Use the new wireless modules together with the new IDS plug head sensors to be independent from cables. The IDS technology allows optimised measurements and efficient documentation in the simplest manner.

- Uncompromised measuring accuracy
- Wireless ready
- Digital sensor recognition
- For measurements/documentation according GLP/AQA
- Supplied with stand



Code	Offer Price, £	Offer Price, €
F12282	752.00	872.00

Accessories

Code	Description	Offer Price, £	Offer Price, €
F12284	Sentix 980-P IDS pH electrode suitable for general biological applications	178.00	206.00
F12286	Connection cable to attach Sentix 980 to meter 1.5m	54.00	63.00
F12288	Wireless IDS Kit - wireless module for sensor and meter, USB charger and universal USB power supply	230.00	267.00

Hanna Bench Top pH Meter with pH Electrode, Temperature Probe and mV Meter

2
YEARS



Bench pH meter designed for every-day use by technical and non-technical staff alike. A two button calibration procedure with pre-programmed buffers and step by step calibration guide, along with a stability indicator help the user to gain accurate results simply and efficiently.

- pH range: -2 to 16pH with 0.01pH resolution
- Temperature range: -9.9 to 120°C
- Automatic pH calibration: 1 or 2 point with 5 memorised buffer values
- Dims, l x w x h, mm: 240 x 182 x 74
- Includes: general purpose glass pH electrode, temperature probe, electrode stand, calibration and cleaning solution sachets and power lead



20%
OFF

Code	Offer Price, £	Offer Price, €
F12444	344.00	399.00

KIMTECH™

BE YOUR BEST

**➤ WE'VE GOT
YOU COVERED**



At Kimtech™, we understand it's critical you get the best possible protection for your people and processes.

That's why we're proud to reintroduce our world-class protective solutions and services. Our compliant product range has got you covered – so you can concentrate on what you do best.

Discover the Kimtech™ range
www.analab.co.uk

Orion Star A211 pH Benchtop Standard ROSS Meter Kit

3
YEARS

Thermo
SCIENTIFIC

Record accurate and reliable pH, mV, ORP and temperature measurements, ideal for a wide range of applications and advanced pH analysis in the lab. Perform up to a five point pH calibration, log up to 2000 data point sets with time/date stamp and easily transfer calibration and data logs via USB or RS232 to a printer or computer with FREE downloadable Orion Star Com software.

- Kit includes: Star A211 pH meter, ROSS Ultra Triode glass-body pH/ATC electrode, ROSS pH buffer and solution kit, electrode stand, universal power adapter, literature CD, printed quick start guide, computer interface cable and meter test certificate
- pH range: -2.000 to 20.000
- pH accuracy: $\pm 0.002\text{pH}$



**30%
OFF**

Code	Description	Offer Price, £	Offer Price, €
F12320	A211 pH Benchtop Standard ROSS Meter Kit	565.00	655.00

Orion ROSS pH Electrodes

- pH range: 0 – 14
- Precision: 0.01
- Temperature range: 0 – 100°C
- Dims, mm: 120 x 12

**10% OFF
and FREE
pH Buffer Kit**



Thermo
SCIENTIFIC

Code	Description	Material	Junction	Connection	Offer Price, £	Offer Price, €
F12322	Combination pH electrode	Glass	Ceramic	BNC	211.00	245.00
F12324	Sure-flow pH electrode with sure-flow junction	Glass	Sure-flow	BNC	293.00	340.00
F12326	Ultra pH electrode	Glass	Ceramic	BNC	276.00	320.00
F12328	Ultra refillable pH/ATC triode combination electrode	Epoxy	Glass fibre	BNC / 8-pin MiniDIN	311.00	361.00
F12330	Ultra glass pH/ATC triode combination electrode	Chemical resistant glass	Ceramic	BNC / 8-pin MiniDIN	321.00	372.00

Astell Ecofill Benchtop Autoclaves



One of the most energy efficient autoclaves available.

The pressure vessel design ensures the absolute minimum amount of water is used during a sterilisation cycle, which not only means comparably low power consumption, but also very quick heating and cooling.

The Ecofill units have an integral reservoir and an in-built autofill water re-circulation system. Once the reservoir is filled, this provides water for up to 15 cycles, and also acts as a collection vessel for condensate. The water is automatically returned from the chamber at the end of each cycle, minimising water usage.



Code	Volume, L	Offer Price, £	Offer Price, €
F12130	33	5515.00	6397.00
F12132	43	6354.00	7371.00
F12134	63	7382.00	8563.00



SLS Select Autoclave Tape Supplied in singles

Code	Description	Offer Price, £	Offer Price, €
F12222	19mm x 50m	3.60	4.18
F12224	24mm x 50m	3.60	4.18

**SPECIAL
PRICE**

LEEC Culture Safe Precision CO₂ Incubators

2 YEARS



The LEEC Culture Safe Precision CO₂ incubators have a fully sealed, electro-polished, one-piece, deep drawn chamber, manufactured from the high grade 304 stainless steel. The outer cabinet is manufactured from stainless steel, and has an anti-bacterial powder coat paint finish.

- Fan-less air circulation
(decreases contamination risk)
- Simple control system
- HEPA filtered gas inlet
- 160°C dry-heat decontamination option (P190D only)
- Temperature range: +5 to +60°C

Up to
36% OFF



Code	Description	Capacity, L	Ext. Dims, w x d x h, mm	Offer Price, £	Offer Price, €
F12446	P50 Precision CO ₂ incubator	50	534 x 460 x 736	2495.00	2894.00
F12448	P190 Precision CO ₂ incubator	190	765 x 740 x 862	2895.00	3358.00
F12450	P190D Precision CO ₂ incubator with 160°C sterilisation	190	765 x 740 x 862	3050.00	3538.00

Lovibond Thermostatic Incubators

2 YEARS



For continuous temperature control. Sockets are incorporated in the interior of the cabinet for devices which require a power supply. Improved insulated housing and highly efficient components provide maximum energy efficiency.

- Temperature range 2°C to 40°C, adjustable in steps of 0.1°C
- Low power consumption
- Illuminated LED display of pre-set and current temperatures
- Ideal for BOD determination at 20°C
- S models have standard door, G models have glass door

30% OFF



Code	Description	No. of Sockets	Capacity, L	No. of Shelves	Ext. Dims, w x d x h, mm	Offer Price, £	Offer Price, €
F12272	TC 135 S	4	135	3	600 x 600 x 850	1265.00	1467.00
F12274	TC 255 S	7	255	4	600 x 610 x 1640	1766.00	2049.00
F12276	TC 445 S	9	445	4	750 x 730 x 1640	2196.00	2547.00
F12278	TC 140 G	4	140	3	600 x 600 x 850	1472.00	1708.00
F12280	TC 256 G	7	255	4	600 x 610 x 1640	1901.00	2205.00

SLS Flowgen Compact Shaking Incubator

2 YEARS



The INCU-SHAKER™ Mini is a compact shaking incubator, offering a large work space which can accept several platforms for use with a variety of flasks, tubes and other common vessels. Temperature, shaking speed and run time are displayed on the large LED control panel located on the front side of the unit. The standard platform (included) features a non-slip rubber coated surface, ideal for tissue culture flasks, petri dishes and staining trays. Exchange flask clamps in one second with the optional MAGicClamp™ magnetic platform.

- Exterior dimensions, w x d x h, cm: 28 x 48 x 33
- Platform dimensions, cm: 28 x 41 x 33
- Operating temperature range: +4 to +65°C
- Shaking orbit: 19mm
- Shaking speed range: 30 to 300RPM
- Temperature range: ambient +5 to 60 (increments of 0.1°C)



Over
30% OFF

Code	Description	Offer Price, £	Offer Price, €
F12580	Flowgen INCU-SHAKER Mini	1791.00	2078.00

Accessories

Code	Description	Offer Price, £	Offer Price, €
F12582	Flowgen MAGicClamp Universal Platform	166.00	193.00
F12584	Clamp 500mL for Flowgen Incu-shaker	26.00	30.20
F12586	Clamp 1L for Flowgen Incu-shaker	39.00	45.20



Azlon Beaker Polypropylene Moulded Graduations

Supplied in packs of 10

Code	Capacity, mL	Offer Price, £	Offer Price, €
F12124	100	9.17	10.60
F12126	250	13.20	15.30
F12128	500	20.70	24.00

SPECIAL OFFER

30% OFF

Thermo Scientific MSC Advantage Class II Biological Safety Cabinets



Combining smart design with best-in-class energy efficiency, reliability and usability resulting in an overall improvement to operation and maintenance. Units feature 60% less energy consumption and heat output. Cabinets are certified to EN 12469 safety standard.

- Energy efficient DC motor technology
- Ergonomically angled cabinet front
- Easy to read control panel
- Manual sliding sash
- Divided stainless-steel work tray removes easily for cleaning or autoclaving
- Electrical sockets – one double (0.9 and 1.2), two double (1.5 and 1.8)
- Available with a fixed height stand of 680mm which provides a work height of 750mm, or an adjustable height stand of 680-880mm which gives a work height of 750-950mm in 50mm adjustable increments
- Stands sold separately



Offer prices include extended 5 year warranty and installation – **worth over £2000!**
Does not include delivery and siting.

30% OFF

Code	Description	Ext. Dims, w x d x h, mm	Offer Price, £	Offer Price, €
F12290	MSC-Advantage 0.9	1000 x 800 x 1520	5940.00	6890.00
F12292	MSC-Advantage 1.2	1300 x 800 x 1520	6275.00	7279.00
F12294	MSC-Advantage 1.5	1600 x 800 x 1520	7030.00	8155.00
F12296	MSC-Advantage 1.8	1900 x 800 x 1520	7195.00	8346.00

Compatible Stands

Cabinet	Fixed Stand	List Price, £	List Price, €	Adjustable Stand	List Price, £	List Price, €
F12290	CAB2628	616.00	715.00	CAB2636	741.00	860.00
F12292	CAB2630	624.00	724.00	CAB2670	860.00	998.00
F12294	CAB2632	737.00	855.00	CAB2640	936.00	1086.00
F12296	CAB2634	744.00	863.00	CAB2642	996.00	1155.00

Taylor Wharton XL Series Storage and Transport Cylinders

5
YEARS

WORTHINGTON
INDUSTRIES
CRYOSCience by Taylor-Wharton®

Storage and transport cylinders for liquefied gases.

- Inner and outer vessels made of stainless steel
- All vessels comply with EU Directive 1999/36/EC for Transportable Pressure Equipment (TPED)
- Available with and without pressure building
- Full circle shock-mount ring
- 5 year warranty on vacuum

20% OFF
plus FREE
Transfer Hose
worth £263



Low Pressure for Liquid Withdrawal

- Max working pressure 1.5 bar

Code	Model	Net Capacity, L	Dims, h x Ø, mm	Liquid Withdrawal Rate L/min	Evaporation Rate N ₂ %/Day	Pressure Build	Offer Price, £	Offer Price, €
F12470	XL70 PB CE	67	1115 x 508	6	3.5	Yes	3514.00	4076.00
F12472	XL120 CE	120	1350 x 508	6	2.3	No	3386.00	3928.00
F12474	XL120 PB CE	120	1350 x 508	6	2.4	Yes	3739.00	4337.00
F12476	XL160 CE	160	1464 x 508	6	1.5	No	2993.00	3472.00
F12478	XL180/20 CE	180	1635 x 508	6	1.3	No	3098.00	3594.00
F12480	XL180/26 CE	181	1280 x 660	15	1.3	No	3806.00	4415.00
F12482	XL180/26 PB CE	181	1280 x 660	15	1.3	Yes	4223.00	4899.00
F12484	XL240 CE	240	1510 x 660	20	1.4	No	4081.00	4734.00
F12486	XL240 PB CE	240	1510 x 660	20	1.4	Yes	4493.00	5212.00

Medium and High Pressure for Gas and Liquid Withdrawal

Code	Model	Net Capacity, L	Dims, h x Ø, mm	Gas Withdrawal Rate N ₂ /m ³ /hr	Evaporation Rate O ₂ %/Day	Max Working Pressure bar	Offer Price, £	Offer Price, €
F12488	XL 45 CE	169	1562 x 508	9.2	1.2	15.9	3107.00	3604.00
F12490	XL 45 HP CE	165	1559 x 508	9.2	1.4	24	3308.00	3837.00
F12492	XL 50 CE	176	1614 x 508	9.2	1.1	15.9	3189.00	3699.00
F12494	XL 55 HP CE	198	1764 x 508	9.2	1.2	24	3719.00	4314.00
F12496	XL 65 HP	240	1476 x 660	9.2	1.5	24	5248.00	6088.00

Introducing, someone you already know.

Meet Epredia. While you may not yet know the name ... you likely recognize **our legacy**.

Epredia™ is the culmination of nearly a century of a singular focus on advancing technologies and products that enhance precision cancer diagnostics.

We are powered by many of the most-respected names in the industry – Shandon™, Richard-Allan Scientific™, Microm™, Menzel-Gläzer™, and others. Together, these brands represent groundbreaking technologies, a remarkable commitment to quality, and a deep dedication to enabling our customers to achieve diagnostic excellence.

Discover our full portfolio, from specimen collection to processing, sectioning to staining, advanced imaging to archiving, we have solutions that help laboratories work more precisely, efficiently, and accurately.

We look forward to meeting you. Again.

© 2019 Epredia. All rights reserved. All trademarks are the property of Epredia and its subsidiaries unless otherwise specified. **M60059 0719**



epredia
Enhancing precision
cancer diagnostics

ANALAB IRELAND PRESENTS

FOCUS

EXCLUSIVE OFFERS & EXCITING NEW PRODUCTS

See page 19...

**30%
OFF**

Ohaus FC5706 Centrifuge Multi

A small benchtop multi-function centrifuge ideal for a multitude of spin-down applications. Reliable, safe and intuitive



AUTUMN EDITION

Analab Northern Ireland
Rathdown Close
Lissue Industrial Estate West
Lisburn, Co. Antrim
BT28 2RB

t. (Lisburn) 028 9262 1100
t. (Dublin) 01 4069 464

www.analab.co.uk or www.analab.ie